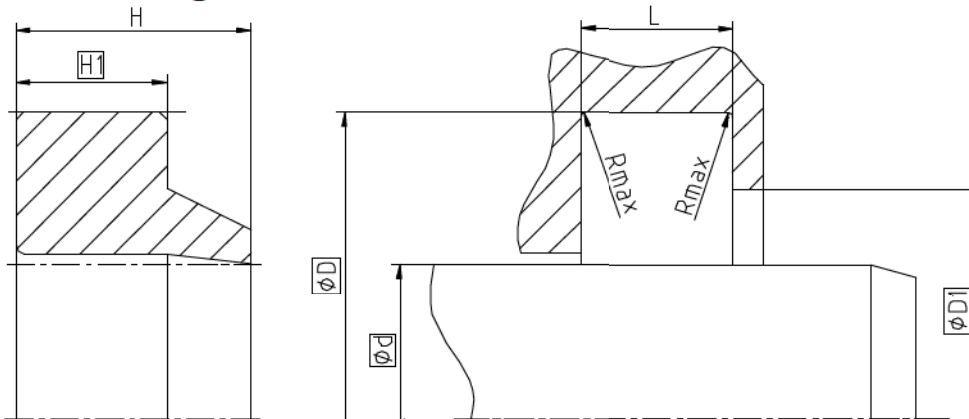


### Seal housing



Surface roughness	Rtmax	Ra
Sliding Surface	≤ 2,5 µm	0,1...0,5 µm
Bottom of groove	≤ 6,3 µm	≤ 1,6 µm
Groove face	≤ 15 µm	≤ 3 µm

Ordering dimensions...□

Bearing area: 50...95% and a cutting depth of 0,5xRz based on Cref = 0%

### Standard dimensions

Ød f8			ØD H10	ØD1 H11	L +0,2	Rmax	c/s
≥ 6	...	≤ 17,5	d + 6,35	d + 4,1	3,15	0,4	3,15
> 17,5	...	≤ 50	d + 9,5	d + 6,3	4,75		4,72
> 50	...	≤ 600	d + 12,7	d + 8,3	6,3		6,3

### Operating parameters

Sealing material	Temperature	max. speed
<b>ECOPUR®</b>	<b>-30 °C...+110 °C</b>	<b>4 m/s</b>
H-ECOPUR™	-20 °C...+110 °C	
S-ECOPUR™	-20 °C...+110 °C	5 m/s
T-ECOPUR™	-50 °C...+110 °C	4 m/s
X-ECOPUR™	-30 °C...+110 °C	4 m/s
XH-ECOPUR™	-20 °C...+110 °C	
XS-ECOPUR™	-20 °C...+110 °C	5 m/s
SKF ECORUBBER-1	-30 °C...+100 °C	4 m/s
SKF ECORUBBER-2	-20 °C...+200 °C	
SKF ECORUBBER-3	-50 °C...+150 °C	
SKF ECORUBBER-H	-25 °C...+150 °C	
SKF ECOFLAS	-10 °C...+200 °C	

The stated operation conditions represent general indications. It is recommended not to use all maximum values simultaneously. Surface speed limits apply only to the presence of adequate lubrication film.

### Ordering example

A10-A, d=50mm, D=59,5mm, D1=56,3mm, L=4,75mm, ECOPUR®

**Wiper A10-A**  
Profile

**50 x 59,5/56,3 x 4,75**  
d x D/D1 x L

**ECOPUR®**  
Sealing material