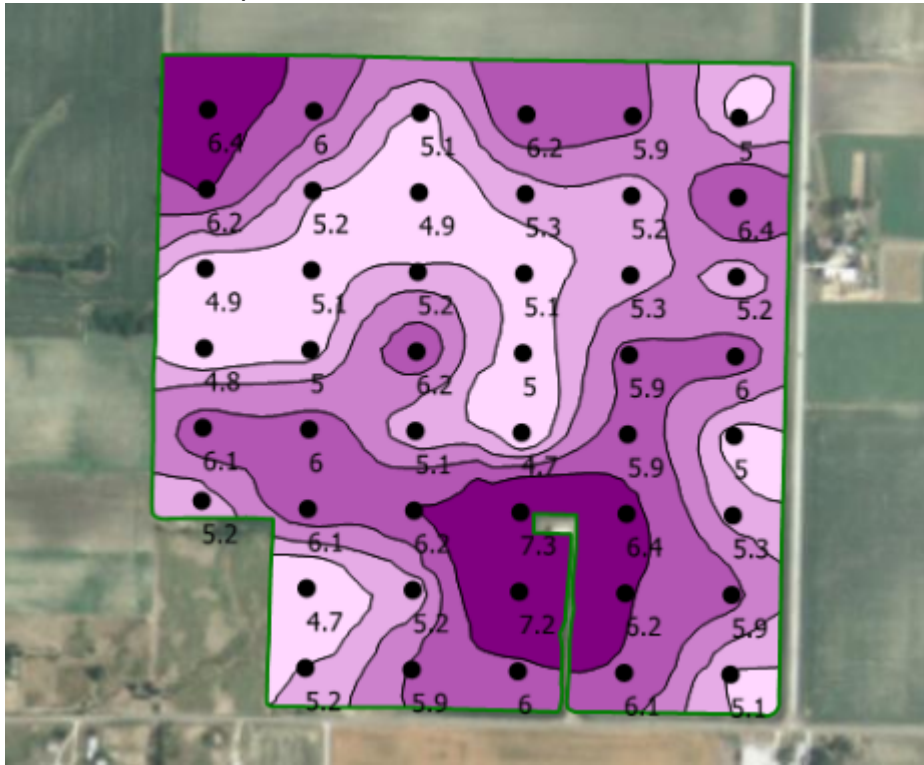


pH Ansurf - Smooth (2005)



pH Ansurf - Smooth (2009)



Client: Sanders Farms
 Farm: Tabor
 Field: Tabor 152
 Area: 151.93 ac
 Lat: 39.61179°N
 Lon: 088.39137°W

Min: 4.74 Percent
 Avg: 5.62 Percent
 Max: 7.28 Percent
 Event Date: 10/12/2005

Min: 5.84 Percent
 Avg: 6.43 Percent
 Max: 7.77 Percent
 Event Date: 11/5/2009

- Field Boundary
- pH Ansurf - Smooth Percent
- 4.74 - 5.18 (28.59 ac) (19%)
- 5.18 - 5.44 (32.23 ac) (21%)
- 5.44 - 5.75 (35.82 ac) (24%)
- 5.76 - 6.16 (37.53 ac) (25%)
- 6.17 - 7.28 (17.75 ac) (12%)

- Field Boundary
- pH Ansurf - Smooth Percent
- 5.84 - 6.16 (17.54 ac) (12%)
- 6.16 - 6.35 (48.52 ac) (32%)
- 6.35 - 6.59 (57.61 ac) (38%)
- 6.59 - 7.05 (21.94 ac) (14%)
- 7.06 - 7.77 (6.32 ac) (4%)

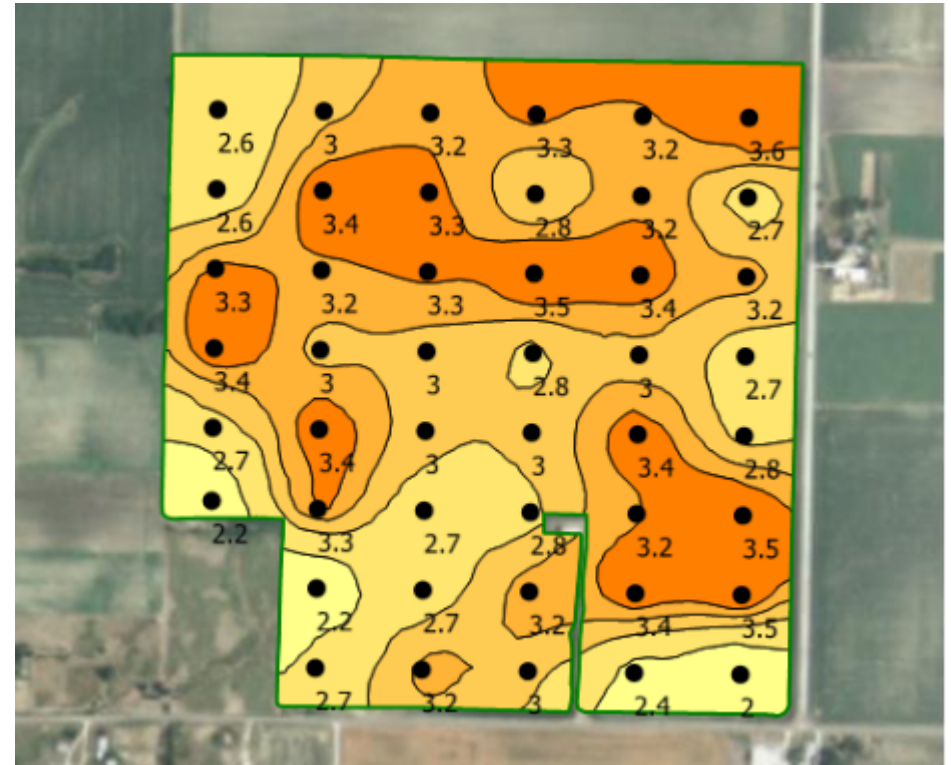
Your Logo 1
 Goes Here

Your Logo 2
 Goes Here

OM Ansurf - Smooth (2005)



OM Ansurf - Smooth (2009)



Client: Sanders Farms
 Farm: Tabor
 Field: Tabor 152
 Area: 151.93 ac
 Lat: 39.61179°N
 Lon: 088.39137°W

Min: 3.94 Percent
 Avg: 5.01 Percent
 Max: 6.35 Percent
 Event Date: 10/12/2005

Min: 1.99 Percent
 Avg: 3.03 Percent
 Max: 3.59 Percent
 Event Date: 11/5/2009

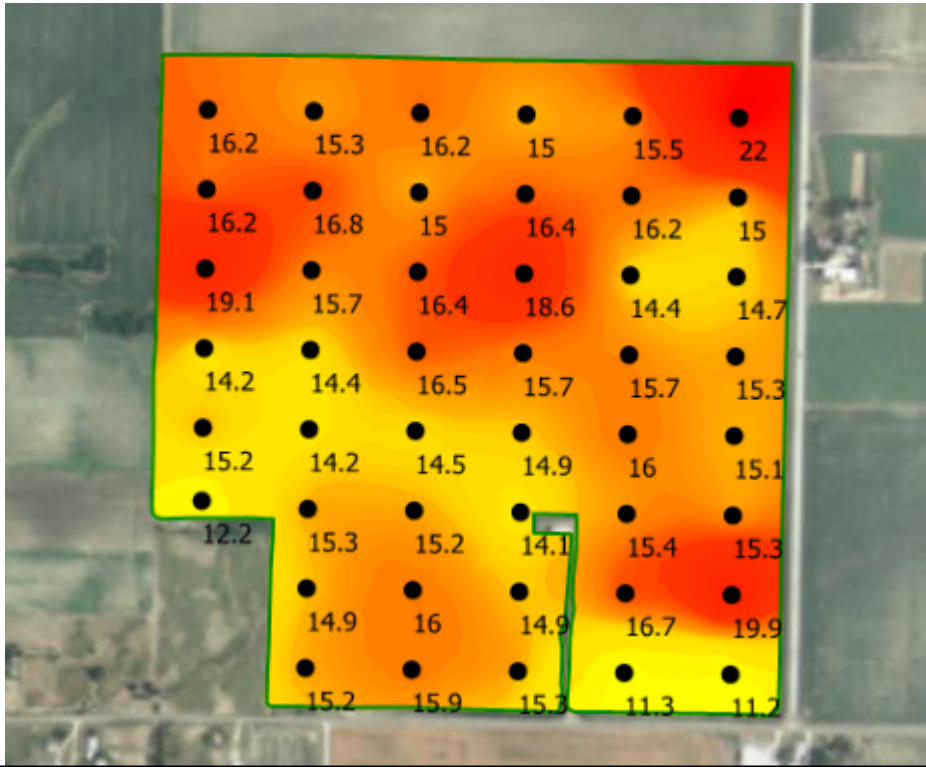
| | |
|----------------------------|---------------------------|
| — | Field Boundary |
| OM Ansurf - Smooth Percent | |
| ■ | 3.9 - 4.4 (32.5 ac) (21%) |
| ■ | 4.4 - 4.7 (27.5 ac) (18%) |
| ■ | 4.7 - 5.1 (26.9 ac) (18%) |
| ■ | 5.1 - 5.6 (30.6 ac) (20%) |
| ■ | 5.6 - 6.3 (34.4 ac) (23%) |

| | |
|----------------------------|---------------------------|
| — | Field Boundary |
| OM Ansurf - Smooth Percent | |
| ■ | 2 - 2.5 (9 ac) (6%) |
| ■ | 2.6 - 2.9 (29.5 ac) (19%) |
| ■ | 2.9 - 3.1 (39 ac) (26%) |
| ■ | 3.1 - 3.2 (40.5 ac) (27%) |
| ■ | 3.2 - 3.6 (34 ac) (22%) |

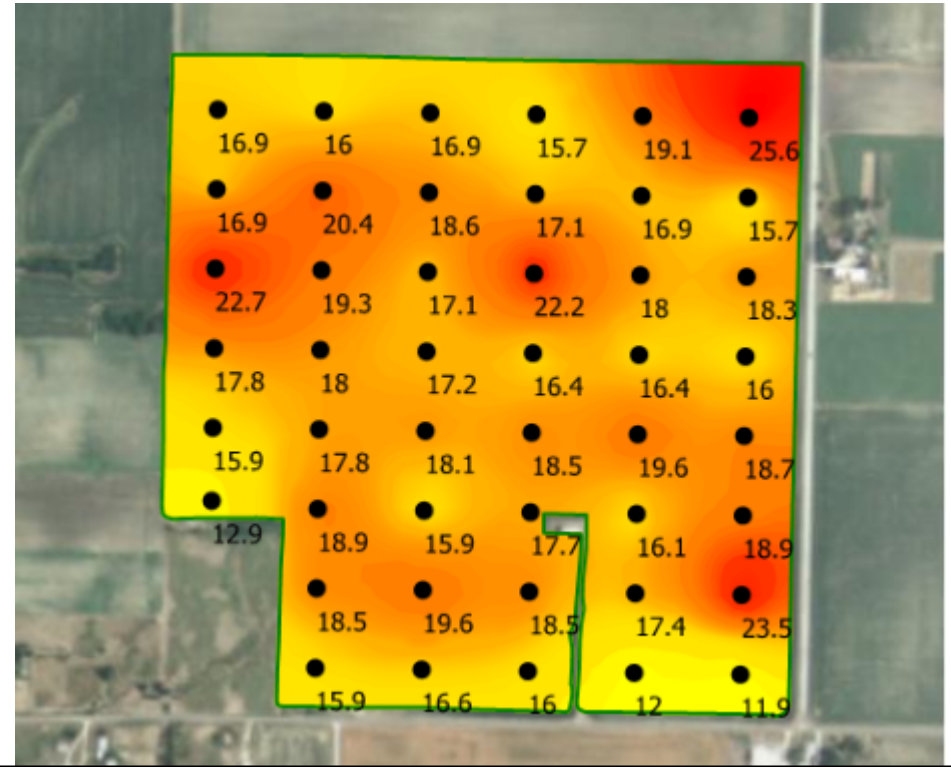
Your Logo 1
 Goes Here

Your Logo 2
 Goes Here

CEC Ansurf - Ultra Smooth (2005)



CEC Ansurf - Ultra Smooth (2009)



Client: Sanders Farms
 Farm: Tabor
 Field: Tabor 152
 Area: 151.93 ac
 Lat: 39.61179°N
 Lon: 088.39137°W

Min: 10.83 meq/100 g
 Avg: 15.62 meq/100 g
 Max: 21.89 meq/100 g
 Event Date: 10/12/2005

Min: 11.29 meq/100 g
 Avg: 17.73 meq/100 g
 Max: 25.47 meq/100 g
 Event Date: 11/5/2009

- Field Boundary
- CEC Ansurf - Ultra Smooth meq/100 g
- 10.8 - 13.7 (7.4 ac) (5%)
- 13.7 - 15.1 (36.7 ac) (24%)
- 15.1 - 15.9 (56.9 ac) (37%)
- 15.9 - 17.1 (37.5 ac) (25%)
- 17.2 - 21.9 (13.4 ac) (9%)

- Field Boundary
- CEC Ansurf - Ultra Smooth meq/100 g
- 11.3 - 15.1 (9 ac) (6%)
- 15.1 - 17.4 (52.6 ac) (35%)
- 17.4 - 19 (65.7 ac) (43%)
- 19 - 21.6 (20 ac) (13%)
- 21.6 - 25.5 (4.7 ac) (3%)

Your Logo 1
 Goes Here

Your Logo 2
 Goes Here

P Bray 1 Ansurf - Ultra Smooth (2005)



P Bray 1 Ansurf - Ultra Smooth (2009)



Client: Sanders Farms
 Farm: Tabor
 Field: Tabor 152
 Area: 151.93 ac
 Lat: 39.61179°N
 Lon: 088.39137°W

 Min: 8.62 ppm
 Avg: 23.68 ppm
 Max: 103.48 ppm
 Event Date: 10/12/2005

| | |
|------------------------------------|-----------------------------|
| — | Field Boundary |
| P Bray 1 Ansurf - Ultra Smooth ppm | |
| □ | 8.6 - 17.9 (70.1 ac) (46%) |
| □ | 18 - 27.8 (40.9 ac) (27%) |
| □ | 27.9 - 41.7 (26.6 ac) (17%) |
| □ | 41.8 - 62 (9.4 ac) (6%) |
| ■ | 62.1 - 103.5 (5 ac) (3%) |

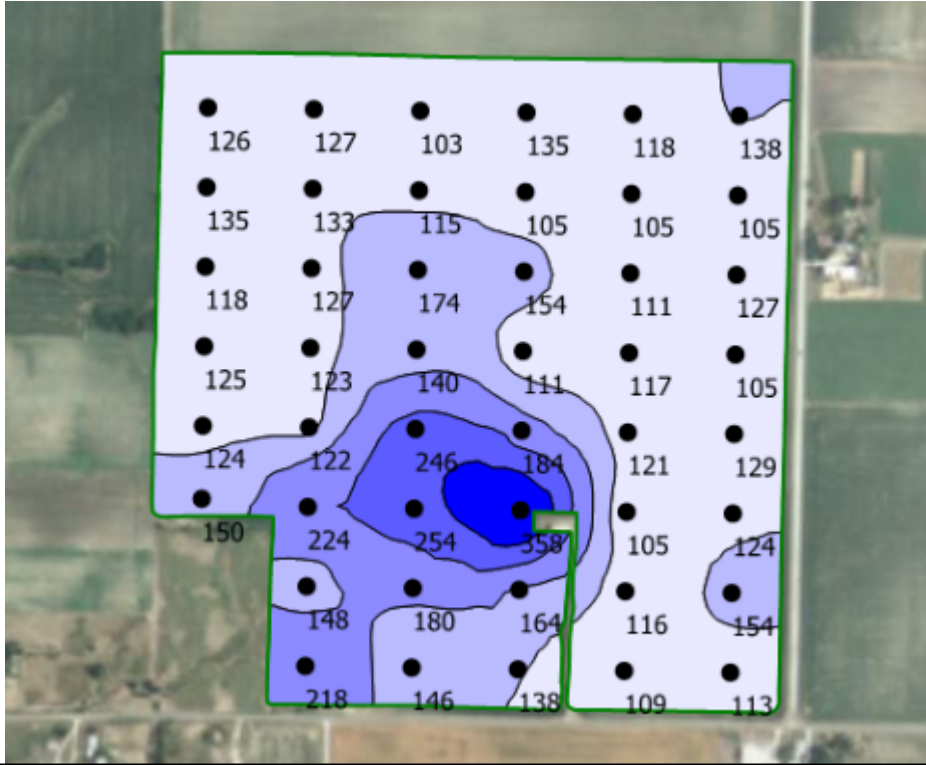
| | |
|------------------------------------|-----------------------------|
| — | Field Boundary |
| P Bray 1 Ansurf - Ultra Smooth ppm | |
| □ | 11 - 23.7 (74 ac) (49%) |
| □ | 23.7 - 36.2 (30.5 ac) (20%) |
| □ | 36.3 - 52.3 (33 ac) (22%) |
| □ | 52.4 - 74.7 (10.2 ac) (7%) |
| ■ | 75.3 - 114.3 (4.3 ac) (3%) |

Min: 11.04 ppm
 Avg: 30.50 ppm
 Max: 114.33 ppm
 Event Date: 11/5/2009

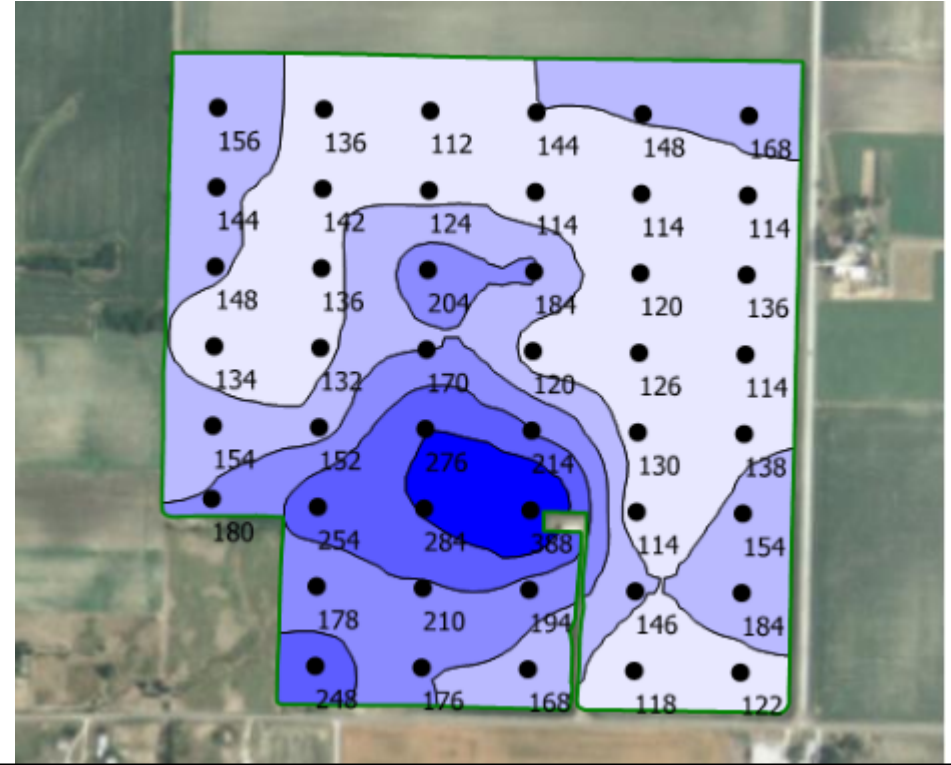
Your Logo 1
 Goes Here

Your Logo 2
 Goes Here

K Ansurf - Smooth (2005)









K Ansurf - Smooth (2009)









Client: Sanders Farms
 Farm: Tabor
 Field: Tabor 152
 Area: 151.93 ac
 Lat: 39.61179°N
 Lon: 088.39137°W

Min: 104.96 ppm
 Avg: 142.67 ppm
 Max: 346.35 ppm
 Event Date: 10/12/2005

Min: 113.56 ppm
 Avg: 162.69 ppm
 Max: 375.84 ppm
 Event Date: 11/5/2009

| | |
|---|-------------------------------|
|  | Field Boundary |
| K Ansurf - Smooth ppm | |
|  | 105 - 134.5 (94.5 ac) (62%) |
|  | 134.5 - 170.6 (31.9 ac) (21%) |
|  | 170.7 - 218.2 (15.7 ac) (10%) |
|  | 218.6 - 270.7 (7.3 ac) (5%) |
|  | 272.1 - 346.4 (2.6 ac) (2%) |

| | |
|---|-------------------------------|
|  | Field Boundary |
| K Ansurf - Smooth ppm | |
|  | 113.6 - 143.4 (67.6 ac) (44%) |
|  | 143.4 - 175.5 (44.4 ac) (29%) |
|  | 175.8 - 218.4 (21.3 ac) (14%) |
|  | 218.8 - 274.4 (13.1 ac) (9%) |
|  | 275.2 - 375.8 (5.5 ac) (4%) |

Your Logo 1
 Goes Here

Your Logo 2
 Goes Here