

○ruben reddy architects

Recommendations

To whom it may concern

Re: Reference Letter for Ruben Reddy Architects

If you have hired Ruben Reddy Architects – or are considering doing so – then you have hired or will be hiring one of the best Architectural firms you can find both locally and internationally! From ideas, sketches and blue prints to paint, bricks and mortar their work is inspirational in providing the best living or working environment to meet your needs. Not only are their Staff very professional, friendly and dedicated but they instill in you the confidence that your expectations and requirements will be met. In fact they will be met beyond your expectations. And I speak from experience.

ACCORD is an international conflict management Institution with a reputation of quality and excellence to maintain. We were therefore looking for no less in an architect firm to provide us with a fresh, new office environment.

In 2009 ACCORD undertook a renovation of a new office floor as well as of some of its existing office space. Our Staff work long hours and travel extensively. One of the value added propositions that ACCORD decided to provide to its Staff was an inspirational and comfortable working environment. Looking for an experienced architect firm who could not only provide a fresh new "contemporary African" look and feel, but who could also work within a very limited time period (less than three months), ACCORD was very fortunate in receiving a complete turn key product from Ruben Reddy Architects. As a registered non governmental (NGO) and not for profit (NPO) Institution, working within a limited budget, Ruben Reddy Architects were able to ensure that ACCORD received the best possible result at a price that it could afford.

They first came to the table by agreeing to sponsor their services to ACCORD. They then appointed one of their highly competent and dedicated Project Managers (Ravin Haripershad) to the project. From there, in consultation with ACCORD on its needs and requirements, they created the concept and design for the new office space, drew up the specs and managed the tender process to identify a contractor for the job and, once a contractor was appointed, liaised fully with them to ensure that all aspects of the design were met.

In addition to overseeing the construction work, Ruben Reddy Architects continued its design theme by liaising with furniture and soft furnishing suppliers to ensure that the look and feel that they had created for the new look ACCORD office space was achieved.

The results speak for themselves. Ruben Reddy Architects will not provide you with a final product that they are not happy with or which does not meet their design standards. Thanks to them ACCORD proudly works in and receives its high Profile guests that include Presidents, Foreign Ministers and other senior Government, African Union and United Nations Officials, with confidence and pride.

I would highly recommend Ruben Reddy Architects for any contract that they tender for. Should further reference be required, please feel free to call me on Tel 082 566 0258.


VASU GOUNDEN
FOUNDER AND EXECUTIVE DIRECTOR



ACCORD House · 2 Golf Course Drive · Mount Edgecombe 4300 · South Africa
Private Bag X018 · Umhlanga Rocks 4320 · South Africa Tel +27 (0)31 502 3908
Fax +27 (0)31 502 4160 e-mail info@accord.org.za Website <http://www.accord.org.za>

Board of Trustees: Madam Graça Machel [Chair], H.E. Ambassador S.M.E. Bengu, Professor G.J. Gerwel, Professor W.I. Nkuhlu, Professor J. Reddy, H.E. Ambassador B.I.L. Modise, Mr. J. de Kock
Founder & Executive Director: Mr. Vasu Gounden

Tel +27 31 451 6666 Fax +27 31 451 6672
Administration Office,
KwaZulu-Natal, South Africa, 4029
P O Box 1, Durban International Airport,
KwaZulu-Natal, South Africa, 4029
www.airports.co.za

Airports Company South Africa Limited Reg No 1993/004149/06 VAT No 4930138393
Board of Directors: SV Zilwa (Chairman), *MW Hlahla (Managing Director), R Persad, *BP Mabelane, NTY Siwendu,
N Galeni, A Kekana, WC van der Vent, MD Ramagaga
*Executive Directors



To Whom It May Concern

Dear Sir/Madam

This letter serves to confirm that Ruben Reddy Architects were contracted for architectural and space planning services at the King Shaka International Airport in the year 2009-2010.

We received amicable services from RRA and would recommend them as a service provider on any envisaged projects.

Should you require anything further, please do not hesitate to contact me.

Yours sincerely


Zinhle Ntanzu

Property Consultant

Email: Zinhle.Ntanzu@airports.co.za

Cell: 082 450 2027

Tell: 032 436 6770



Building study

A healing role in a nation torn apart by politics

Sheppard Robson with John Cooper Architecture
have led the design of the Nelson Mandela
Children's Hospital in Johannesburg



The brief was to create a modern state-of-the-art paediatric tertiary facility, on the University of the Witwatersrand's education campus in Parktown, Johannesburg. It is a 200-bed, eight-theatre facility, with advanced diagnostics and future plans for expansion to 300 beds.

Appraisal Hannah le Roux
Photography Tristan McLaren

The most enduring association that South Africans have with their first democratically elected president, Nelson Mandela, is children. Deprived of any contact with his own during his 27 years in prison, during which time his oldest son died in a road accident, on his release he revelled in contact with the nation's children. His choice of a state-of-the-art, publicly operated children's hospital as a major legacy project is therefore a most appropriate one. When it opens to patients later this year, its siting,

integration of nature, and its pedagogic and communicative functions will serve as a timely reminder for South Africans of the optimism that their first president inspired.

The site itself has a contested history that parallels Mandela's personal one. The Parktown Ridge was first colonised by the gold-mining 'Randlords' at the turn of the 20th century. Under the Afrikaner-dominated city government in the 1970s, several of their grand houses were expropriated and demolished to make way for two welfarist projects for whites: the massive block of the general hospital and a sprawling Modernist education campus. Sited on a corner of this campus and facing the remnants of the villas across Jubilee Road, the Nelson Mandela Children's Hospital brings together spatial and social fabrics torn apart by politics.

The facility, a short walk from the general hospital and associated Wits Medical School, will operate as a referral hospital

from across southern Africa to compensate for a lack of tertiary and quaternary paediatric care elsewhere. It will offer a sophisticated suite of specialist units catering for infants and children aged up to 15 in 200 beds and 48 day-patient stations, with the capacity for extension.

Keith Bolton, a veteran paediatric doctor who has led the expert team behind the hospital's brief since its scoping in 2005, has explained the need for such a facility in the face of health crises requiring primary care.

'South Africa has the dubious honour of displacing Brazil as the world's most inequitable country, with the rich getting richer and the poor getting poorer,' he says. 'This has given rise to a two-tier health system where our privately funded patients (20 per cent of the population) have access to the world's best care, while the vast majority gets pretty mundane care. Yet, we have the skills and wherewithal to provide excellent

care to all. South Africa's poor and indigent also have the right to excellent healthcare at all levels. Immunisation and clean water are essential, but this is cold comfort to a child with congenital heart disease, leukemia or kidney failure.

'The Nelson Mandela Children's Hospital will provide cures for these children. It will be integrated into the existing healthcare system, and this will ensure equity of access to all children. A major spin-off will be the training capacity of the hospital. Paediatric nurses, therapists and medical specialists will return to their homes in different regions and take their skills with them.'

The training function of the hospital informs the functional layout and its visual semantics. The clinical and service functions are split vertically and entered from the north and south respectively, creating an immediate clarity in the paths from access to care. A reception leads to an internal street that links six wings, each relating to a specialisation: oncology, surgery, cardio-thoracic, neonatal and paediatric intensive care, nephrology and transplant, radiology and imaging. The scaling is generous where it matters, with wards and operating rooms large enough to accommodate rounds of registrars and trainee caregivers, as well as parents, who stay over in a top-floor residence.

Despite a drawn-out process that started with a competition, the design team has iterated the design process to produce an efficient clinical environment that feels warm and caring. From the concept design that interspersed the six care units with landscaped courtyards, to the detail of finishes, planting and technology, there has been a largely successful transfer of intent from Sheppard Robson and John Cooper Architecture to the local practices involved.

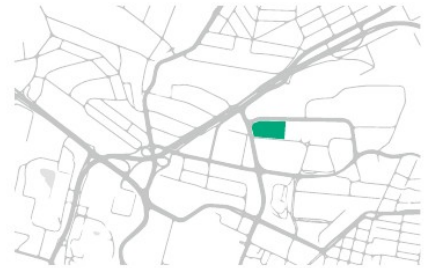
The overall form extends the low-slung formal language of warm brick and raw concrete of the adjacent campus, but introduces colour through sunscreens and glazed end-walls. These offer public glimpses into lounges and stairwells that are amplified by upturned roofs. A similarly optimistic spirit is conveyed by the signage. Appropriately for children living in a multilingual country, the design team has minimised verbal content in favour of patterns and ideograms that reference traditional shweshwe fabrics and children's drawings of medical people and objects.

Nature plays a critical role in this culture of care. The courtyard gardens are carefully defined in dialogue with adjacent clinical functions through the selection and placement of types of plants, surfaces and water alongside structures for play and relaxation. The healing garden between the neonatal intensive care unit and theatre waiting area is one of the most therapeutic of these courts. On the upper levels, distant but equally rich views of nature are captured from many wards and all the visitors' rooms. These are oriented towards the trees of the

ridge or the education campus sports fields, and to city views beyond.

These thoughtful pairings are the hallmark of a design process that seems to have absorbed but also challenged international norms. An example of this localisation is the wards shared by two or four children. While spacious by even private healthcare standards, they depart from a Western preference for single rooms. This choice is only partially economic, and considers how southern African children who tend to share rooms at home might have their healing hindered by isolation. Such sensitive decisions also mark the predominance of women-led practices and associates in the design team, who have articulated their ethos of care within the details.

The transfer of authorship between designers has at times resulted in some slippage in spatial logic. The locations of the hallmark windows and screens are hard to read from the inside, apparently



Site plan

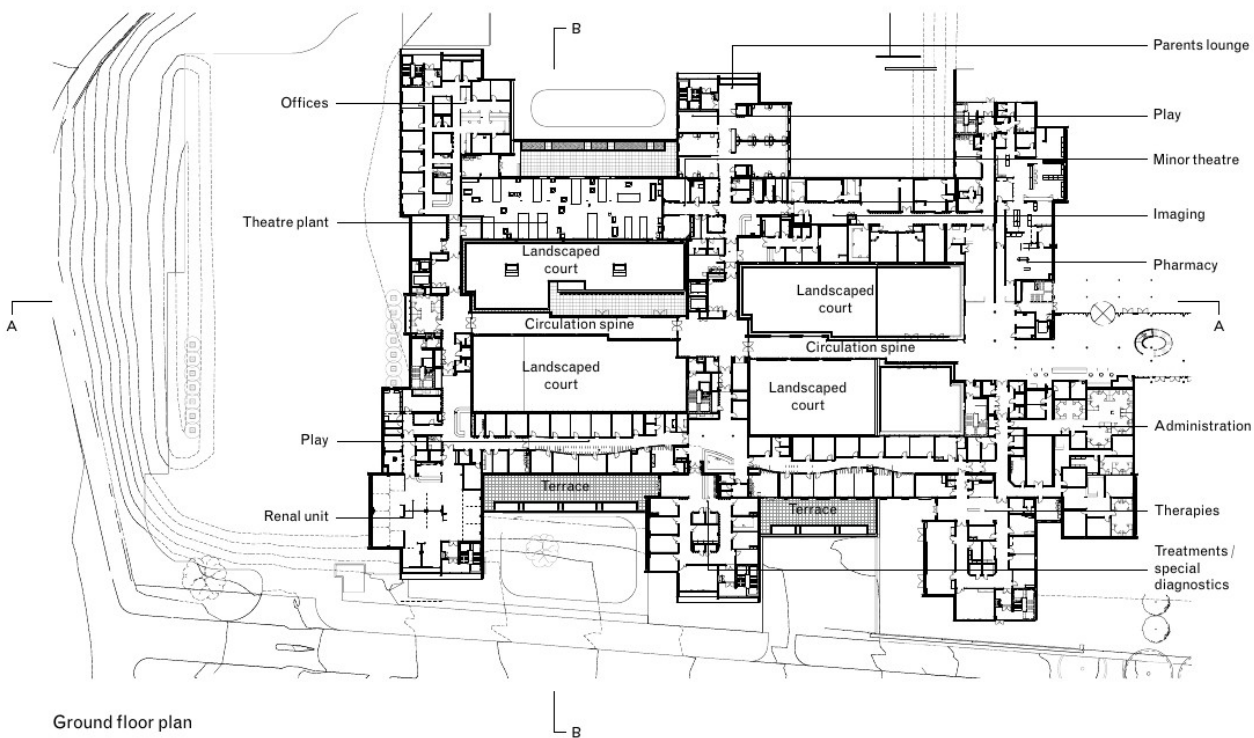


the consequence of a mismatch between visual and technical considerations. More disappointing is the banal set of finishes in the parents' residence, designed by a different interior team provided by the donors, which feels at odds with the delight of the spaces below. While the technical equipment is state-of-the-art, the occasional deep spaces this necessitates feel claustrophobic and poorly ventilated.

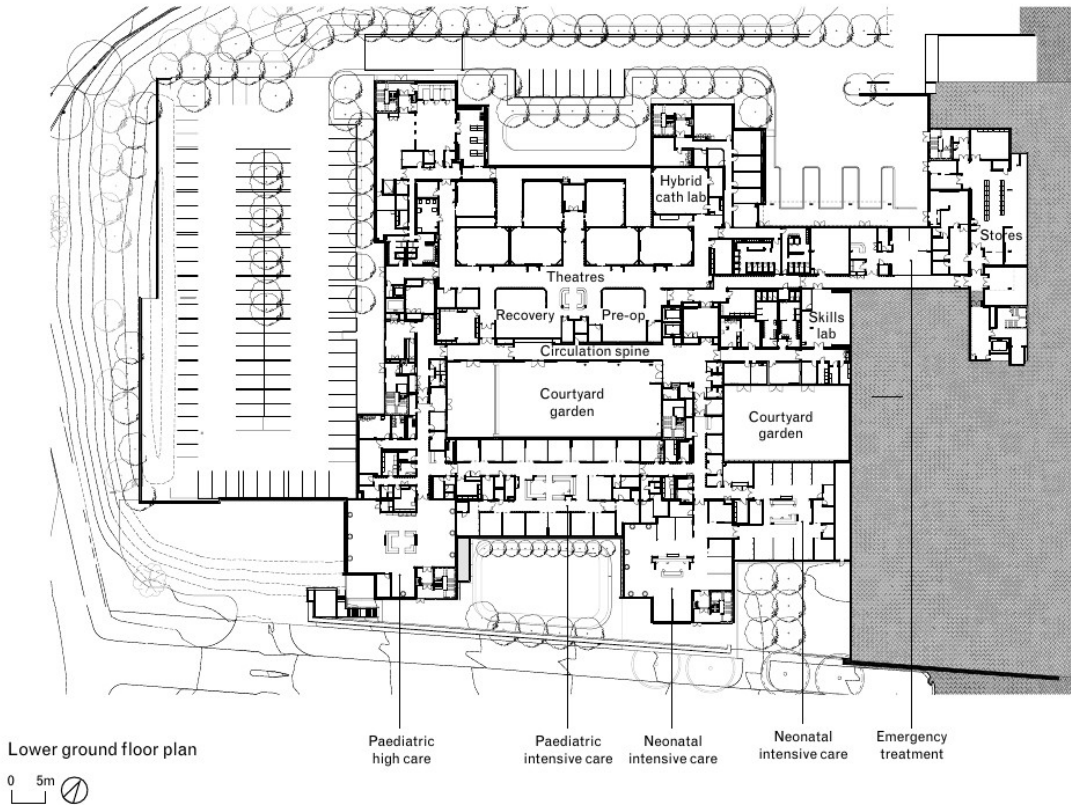
But, transcending these details, the hospital, of all the projects in Mandela's name, will stand out as his most fitting tribute. Its broader vision to enact the rights of children and to pass on an exemplary legacy makes it a truly noble place. It illustrates in concrete terms how design can perform a healing role in the face of political damage.

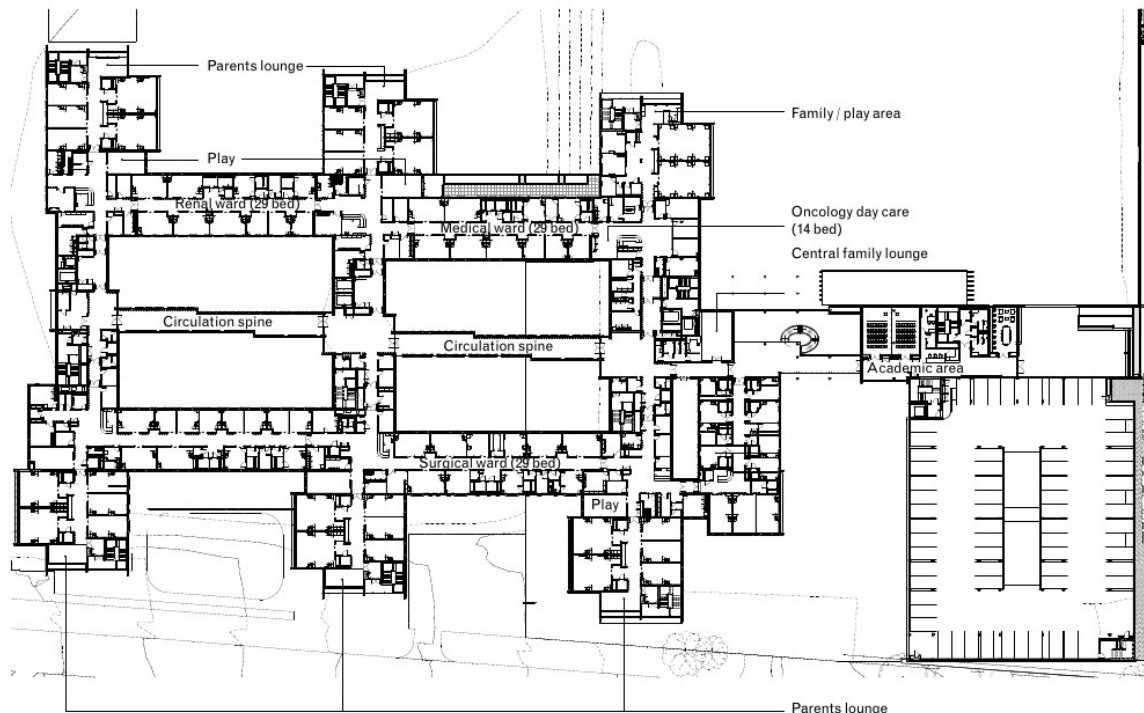
Hannah le Roux is associate professor in the School of Architecture and Planning, University of the Witwatersrand, Johannesburg.





40





First floor plan

Project data

Completion December 2016

Gross internal floor area 29,900m²

Procurement route International design competition

Construction costs

Building: £28.5 million; equipment: £19 million; training, environmental design and landscaping: £16 million

Concept architect Sheppard Robson with John Cooper Architecture

Façade and public space architect

GAPP Architects and Urban Designers

Local lead and delivery architects

Ruben Reddy Architects

Client Nelson Mandela Children's Fund

Structural engineer Mott MacDonald

M&E Spoomaker & Partners, Mnjiya Consulting Engineers

Quantity surveyor Mbatha Walters & Simpson

Interior designer Bon Bon, Blackbird Design, ID:SR Sheppard Robson

Project manager Sip Project Managers

Main contractor Group Five

Landscape architect Greeninc Landscape Architecture

CAD software used Revit

Client's view

The story of what is now Nelson Mandela Children's Hospital (NMCH) goes back nearly 10 years. What was born out of a simple request from the late Nelson Mandela to look at improving paediatric healthcare systems in southern Africa led to a global capital campaign to build this hospital.

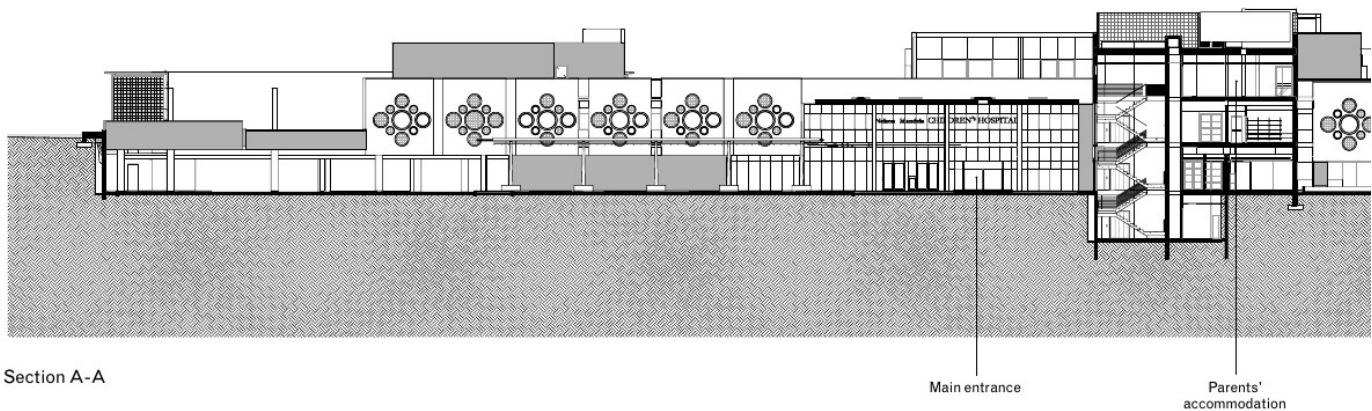
But before we could build or even raise funds for this facility, NMCH Trust had to know what it would be and what it would look like. In 2010, the trust appointed the architectural team made up of Sheppard Robson International, John Cooper Architects (based in the UK), plus GAPP Architects and Urban Designers, and Ruben Reddy Architects (both in South Africa).

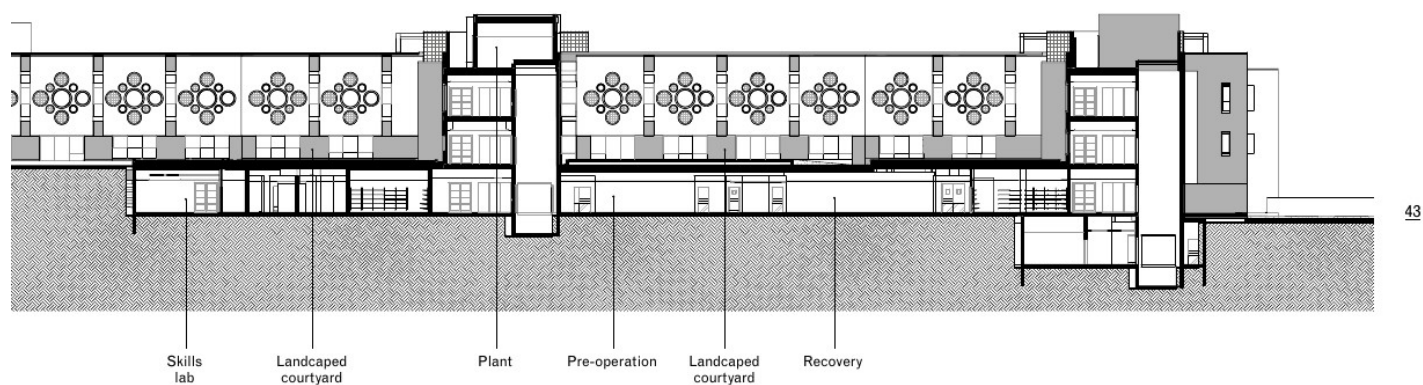
Through its unique expertise, this collective was instrumental in bringing to life a vision that seemed somewhat far-fetched in

its idealism but also necessary in its potential impact. As a non-profit organisation, the trust always maintained that 'we are not in the business of building hospitals' and, because of that, relied heavily on the guidance of the design team, balancing innovation, creativity and pragmatism. Through the years, as part of the technical task team, the architects collaborated and contributed to various aspects of the project as it advanced.

To date we have celebrated many milestones of this project and, as we look forward to admitting our first patients later this year, we are proud to have worked not with suppliers or consultants, but with partners. We are happy to count this design team among those partners.

Sibongile Mkhabela, chief executive, Nelson Mandela Children's Hospital Trust





43

Architect's view

The competition-winning design broke away from housing all departments in a single 'box' building, which often leads to deep floorplates where the patients and staff have little contact with the outside world. After extensive consultation, it was clear that long, institutional and windowless corridors should be avoided in favour of a plan that connected to its natural surroundings.

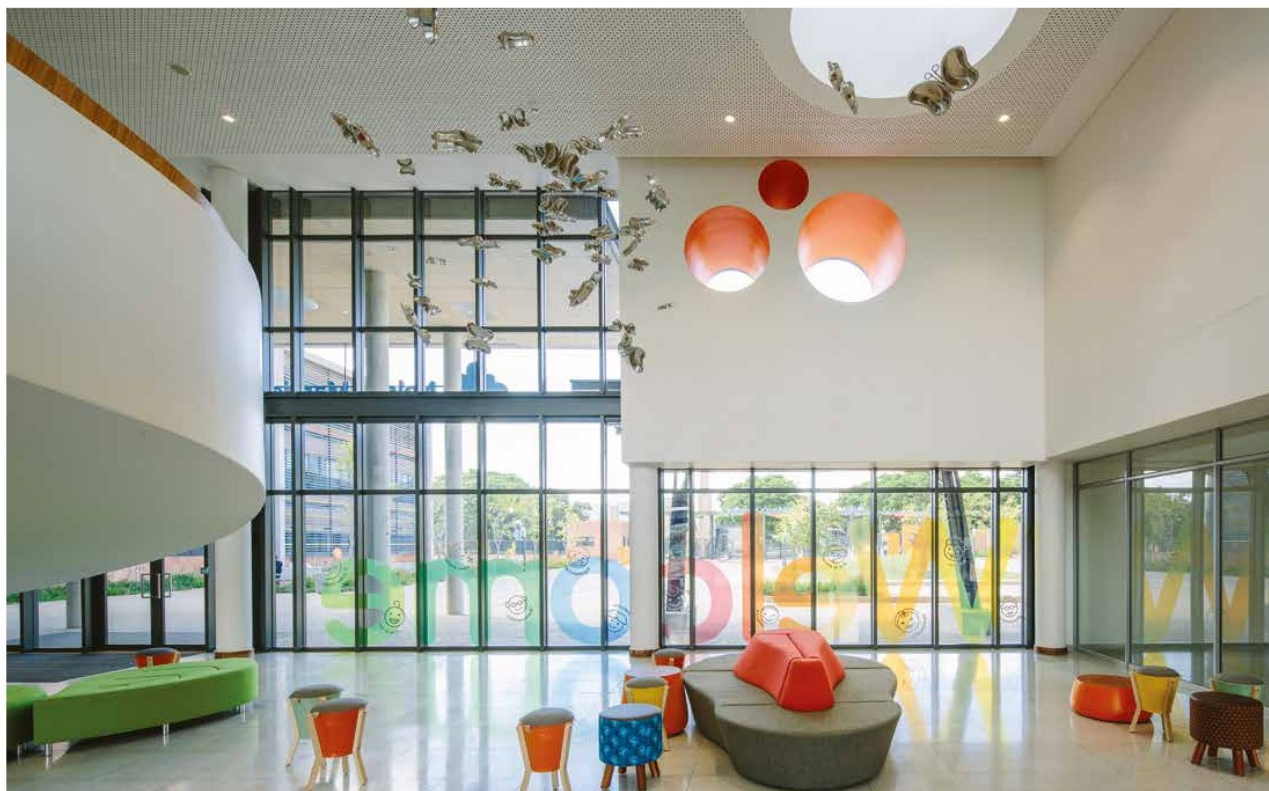
Sheppard Robson worked with John Cooper Architecture to develop a concept revolving around the creation of six wings, each with its own specialism. These were connected by a 'street' that ran through the centre of the project. This, with its three main junctions to enable efficient flow of people, was vital for connectivity. The separation of floors avoided cross-overs and assisted wayfinding.

By breaking down the mass of the building into six elements, the design has a domestic,

human scale that is reassuring and familiar to children.

The composition increased the length of the perimeter of the building and created shallow floorplates. This meant more natural light could flood into the building, placing many treatment spaces next to windows which made the most of the views out over the surrounding landscape as well as into the internal courtyards created in between the hospital's wings.

The five internal therapeutic courtyards and the three exterior therapy gardens – spaces that invite contemplation – were designed for occupational therapy and children's play. The external spaces were created with healing in mind, and the design encourages patients to use the outdoor spaces as part of their recovery. *Barry Kendell, associate, Sheppard Robson*



44

Interior design

As designers, we typically research how similar problems have been solved and how to improve on these. But the Nelson Mandela Children's Hospital project presented a challenge that had never been tackled to this scale in southern Africa. With the region being richly diverse in language, culture and social economic situations, this presented a bigger puzzle to solve than just creating a child-friendly space.

The client's brief was also to look at a culturally relevant environment that didn't play on the typical clichés of Africa. It needed to be a contemporary and all-encompassing space where children would thrive and heal, and where families could be supported, included and cared for.

This created challenges around how to communicate with all in an effective and simple manner and how to create a space that empowers the child in an environment where choice is limited; giving them hope, dreams and aspirations beyond their current situation, while still being family-orientated.

The internal environment design is defined as a holistic design strategy that includes interiors, graphics, wayfinding and signage, art and the background generation of relevant content.

A primary, memory-based wayfinding language was created, using the layering of colours, icons and characters. The starting point was colour, layered with

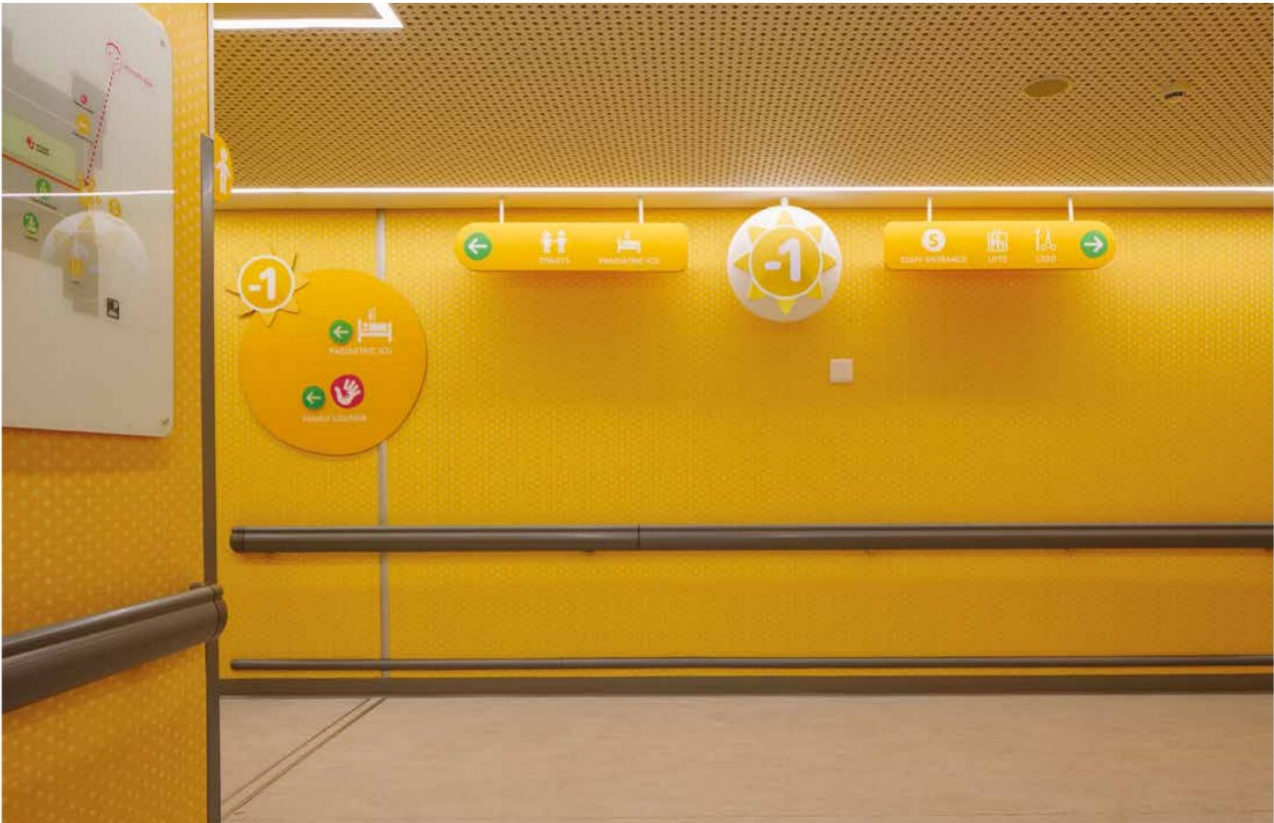
relating symbols: blue-cloud, green-leaf, orange-mountain and yellow-sun. This was enhanced with wallpaper, developed using a children's workshop to create a pattern that has a relevant African aesthetic based on traditional shweshwe fabrics. A secondary wayfinding system is coded with unique colour and icons to lead children to child-focused places within the hospital, such as play areas, gardens and family lounges.

The interior environment had to follow on from the wayfinding colours and icon reference to extend the experience into the clinical areas. A family of mascot characters was developed to aid the careful messaging that will be used by staff and aid workers to create distraction and encourage conversations with children. These characters extend to play areas, which have been created to encourage physical play.

Family lounges have been created within the ward areas. We focused the design of these lounges on comfort and familiarity, by using local designs and fabrics and adding personal touches using children's art and the shweshwe-inspired wallpaper.

The key opportunity was to explore a visual design and interior language rooted in South African experience, while simultaneously maintaining a sense of inclusivity and adhering to international best practice.

Michelle Foster, Blackbird Design, and Carina Comrie, Bon Bon







Detail

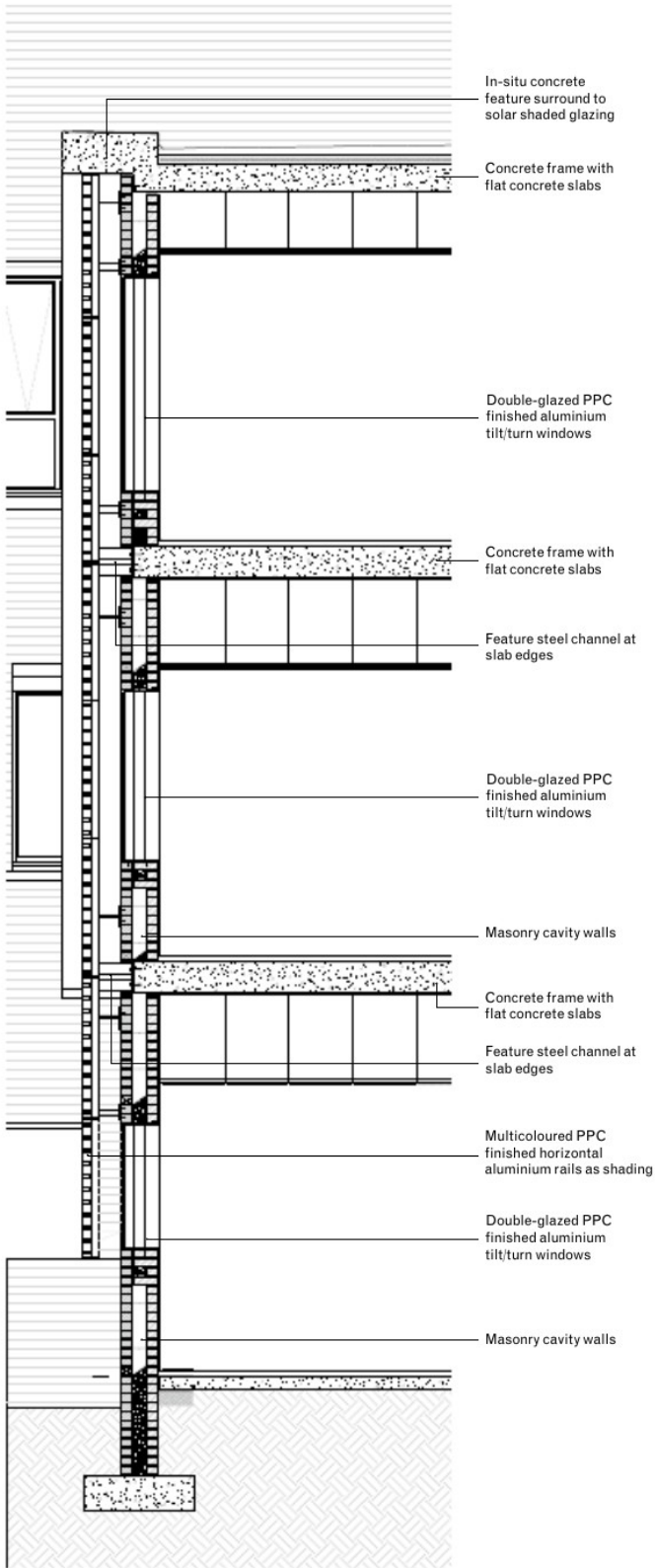
The building's expression of colour, inside and out, is an important characteristic of the design. From the outside, the most powerful expression of colour is on the solar shading walls – formed from brightly coloured horizontal rails – which change on each of the hospital's wings to give them a distinct identity. These correlate to the colours used internally to reinforce the wayfinding strategy.

The construction and detailing of these polyester, powder-coated sun shades – designed to withstand Johannesburg's intense sunlight – illustrate the project's approach to using simple construction techniques and passive design solutions.

The walls of shading are an example of how the building adopts construction techniques familiar in South Africa: in-situ concrete structure, brick cavity walls and powder-coated double-glazed aluminium windows, most of which open to facilitate natural ventilation. The mass of the building's structure helps stabilise the thermal environment.

Externally, the visually concrete forms have a strong identity, expressing confidence and permanence. These act as a counterpoint to the lightweight, brightly coloured delicate solar screens, which give the wings a human scale.

48 *Barry Kendell, associate, Sheppard Robson*



Solar shading wall detail section

0 0.5m



BIDDING NATION
RUSSIA

IN APPRECIATION

Dear **Mr. Reddy**,

On behalf of the Russia 2018 Bid Committee I would like to thank you and your team for your dedication and hard work on our Bid. It is because of work like yours that Russia has been awarded the right to host the 2018 FIFA World Cup™.

The impact that the world's largest football tournament will have on our country is immense, and I believe it will leave a monumental legacy for generations of Russians. Thank you for your valuable contributions to this historic legacy and know that Russia will inspire the world in 2018.

A handwritten signature in blue ink, which appears to read 'А. Соркин' (A. Sorokin).

Alexey Sorokin
Russia 2018 Bid Committee CEO



**DENIS
HURLEY
CENTRE**

IT 544/ 2010/PMB • PBO 930034301 • NPO 84819 • VAT Reg 4720266362



Sergio Vieira de Mello
2013 Peace Awardee



2014 Awardee

Care ♦ Education ♦ Community **Ukunakekela ♦ Imfundo ♦ Umphakathi**
Cnr Denis Hurley Street & Cathedral Road, Durban 4001, South Africa

29 July 2015

TO WHOM IT MAY CONCERN

RECOMMENDATION LETTER FOR RUBEN REDDY ARCHITECTS

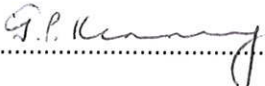
Dear Sir/Madam

Please accept this letter of recommendation of the professional architectural services provided by Ruben Reddy Architects for the Denis Hurley Centre at Emmanuel Cathedral in Durban.

They are a very experienced firm and we were very satisfied with the efficient and ethical manner in which they provided their services during the construction period.

I would like to acknowledge the highly creative design of the building and the good cooperation we enjoyed with their representatives and, on this basis, strongly recommend their services to you.

Please feel free to contact me regarding the above recommendation.

Signed: 

G.P. Kearney
Chairperson: Denis Hurley Centre Trust
031-2013832/072-8064417.
pkearney@saol.com

PATRONS: Cardinal Wilfrid Napier OFM ♦ Rabbi Hillel Avidan ♦ Bishop Kevin Dowling CSsR ♦ Ela Gandhi ♦
Jeremy Hurley ♦ Advocate AB Mahomed SC ♦ AV Mahomed ♦ JB Magwaza ♦ Paddy Meskin ♦ Elizabeth Mkame ♦
Dr May Mashego Mkhize ♦ Nomabelu Mvambo-Dandala ♦ Mgr Paul Nadal ♦ Dr Ben Ngubane ♦
Archbishop Jabulani Nxumalo OMI ♦ Bishop Rubin Phillip ♦ Judge Leona Theron ♦ Canon Christopher Tuckwell ♦
Bishop Michael Vorster ♦ Mikaela York (née Hurley)

To whom it may concern

Reference Letter

Ruben Reddy and his team at Ruben Reddy Architects worked for the 2010 Local Organising Committee as a member of the Local Organising Technical Team in charge of the monitoring and programming of the construction of the stadium infrastructure for the 2009 FIFA Confederations Cup and 2010 FIFA World Cup.

Ruben Reddy and his team met all quality targets within the given budgets and deadlines and contributed largely to the overall success of the 2009 FIFA Confederations Cup and 2010 FIFA World Cup.

FIFA Management across all functions as well as our partners at the Local Organizing Committee of the 2010 FIFA World Cup has expressed their high estimation of the contribution of Ruben Reddy Architects.

In addition, Ruben Reddy and his team worked in the development of the FIFA publication 'Football Stadiums Technical Recommendations and Requirements' both the 4th Edition and the latest 5th Edition.

Ruben Reddy Architects' scope of services included the following:

- Support to the FIFA team in the development of both Edition 4 and 5 of the FIFA publication and the development of the FIFA World Cup Stadium Requirements included in the publication.
- Development of all graphic diagrams included in the publication to illustrate critical FIFA recommendations and requirements for stadium design. These diagrams have become the benchmark of graphic representation in the football stadium design world
- As part of the FIFA Task Team in charge of developing the publications, Ruben Reddy assisted FIFA in the edition of the document and the development of revised and additional recommendations and requirements based on the experience of both the 2006 and 2010 FIFA World Cups, drafting large portions of the books.

The commitment, the professionalism and outstanding experience of partners like Ruben Reddy Architects turns challenging initiatives into reality that will leave a significant impact on the Stadium planning and construction in both of the upcoming FIFA World Cup host countries.

We would like to express our gratitude to Ruben Reddy and his team of Ruben Reddy Architects for the excellent support, cooperation and teamwork over the past ten years and we look forward to continuing our cooperation with Ruben and his team and can recommend Ruben Reddy Architects for similar task without any hesitation.

Zuerich, 6 June 2014



Juergen Mueller

Head of FIFA World Cups 2018 and 2022



03rd October 2016

TO WHOM IT MAY CONCERN

RECOMMENDATION LETTER FOR RUBEN REDDY ARCHITECTS

Dear Sir/Madam

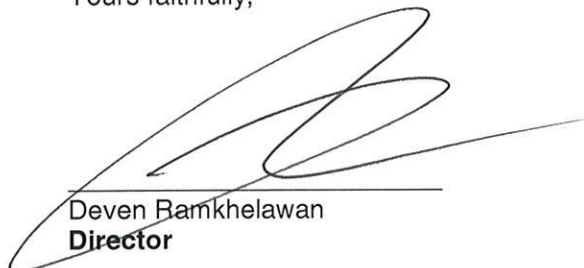
Please accept this letter of Recommendation of the remarkable professional project and Architectural services provided by Ruben Reddy Architects for Free State ASIDI School - 8 New Schools (including Refurbishment), Free State , South Africa

Ruben Reddy Architects executes their services in a professional and ethical manner during their project.

I wish to acknowledge the high standard of service that goes beyond their expectations and I would recommend their services to you most enthusiastically and without reservations.

Please feel free to contact me regarding the above recommendation

Yours faithfully,



Deven Ramkhelawan
Director



03rd October 2016

TO WHOM IT MAY CONCERN

RECOMMENDATION LETTER FOR RUBEN REDDY ARCHITECTS

Dear Sir/Madam

Please accept this letter of Recommendation of the remarkable professional project and Architectural services provided by Ruben Reddy Architects for Grade R Schools Accelerated Delivery @ 38 Schools, Gauteng, South Africa.

Ruben Reddy Architects executes their services in a professional and ethical manner during their project.

I wish to acknowledge the high standard of service that goes beyond their expectations and I would recommend their services to you most enthusiastically and without reservations.

Please feel free to contact me regarding the above recommendation

Yours faithfully,



Deven Ramkhelawan
Director



Where the World meets Africa



04 August 2016



AFRICA'S LEADING MEETINGS
AND CONFERENCE CENTRE - AS VOTED
BY THE WORLD TRAVEL AWARDS

To Whom it May Concern

Reference for Ruben Reddy Architects

Ruben Reddy Architects were awarded a contract to design and manage the upgrade of seventeen ablutions at the Durban ICC.

Our executive team was extremely happy with the design proposed by Liezel Ferreira and we decided to proceed with the project.

All plans have been prepared and handed to the contractors on time and the project is proceeding extremely well. We are currently busy with the last six ablutions and eleven have been successfully completed on time.

Ruben Reddy Architects have been monitoring the progress of the upgrades to ensure that the contractors adhere to the plans and have resolved any minor unforeseen issues very quickly and have supplied amended plans to resolve the issues.

I am extremely happy with the service that we receive from Ruben Reddy Architects, and will have no hesitation in recommending them.

The new improved ablutions will assist the Durban ICC with maintaining its Five Star Image.

Yours sincerely,

J.C. Hurter
Facility Director
(031) 360 1200

45 Bram Fischer Road, Durban, 4001 • P.O. Box 155, Durban, 4001, South Africa +27 (0)31 360 1000 sales@icc.co.za www.icc.co.za @DurbanICC

AFRICA'S LEADING CONVENTION CENTRE

International Convention Centre Durban (Pty) Ltd.
Directors: DM Madlala (Chairperson), SST Ngcobo, A Sewnarain, S Msomi, Z Msimang
ICC DURBAN (PROPRIETARY) LIMITED Reg. No. 1992/05887/07





ILEMBE EPC JOINT VENTURE

The Farm La Mercy Airport, No. 15124, 1270 Coins Temp Road. Canelands (NW)

P O Box 2620, Country Club, 4301, South Africa

Tel: +27 32 438 8300

Fax: +27 32 438 8597

03 November 2010

New King Shaka International Airport - Durban, South Africa

Professional Team

Client: **ILEMBE CONSORTIUM**

Project Manager: **ILEMBE EPC**

Architectural Joint Ventures (AJV) - Professional Team Member - **Ruben Reddy Architects**

Description of the Project, Scope of Work

Value - Confidential

Construction Programme - October 2007 to April 2010

Project Status - Completed

This letter serves to confirm that Ruben Reddy Architects participated as a member of the Architectural Joint Venture for the King Shaka International Airport development.

Their scope of works included Design Development, Detail planning, Construction documentation and specification, Onsite supervision and quality control, Consultant Service co-ordination and Tenant Co-ordination services.

Ruben Reddy Architects performed their duties as Architects and Planners for the following areas within the King Shaka International precinct with the highest levels of professionalism and conduct.

- Terminal Building - approx = 95 358m²
 - Airside Corridor
 - Terminal Building Tenant co-ordination
 - Terminal Building Interior Finishes
- Urban Fabric - 60 000m²
- Utilities Tower - 1485m²

Group Five Construction (Pty) Ltd; WBHO Construction (Pty) Ltd; DLDMIC Construction (Pty) Ltd; Edwin Construction (Pty) Ltd; Greenmile Investments 184 CC;; Izinyoni Trading 238 (Pty) Ltd; Kuhle Utility Services CC; Mantombana Enterprises CC; PG Mavundla Engineering (Pty) Ltd; Pan African Development (Pty) Ltd; S'khona Disabled Empowerment Forum (Pty) Ltd; Tarice Trading (Pty) Ltd; Turquoise Moon Trading 553 (Pty) Ltd; Zethembe

The RRA team performed an admirable service and is highly recommended for their levels of professionalism, team spirit and willingness to deliver a quality product which satisfies the Brief and the Project. The members of the Team constantly displayed high levels of competence and initiative with regard to problem solving and ingenuity.

I therefore have no hesitation in recommending Ruben Reddy Architects as an outstanding practice that will be an asset to any Professional team.

Yours sincerely

A handwritten signature in black ink, consisting of a large, stylized 'S' followed by a horizontal line that tapers off to the right.

Stuart Proudfoot (Mr.)
Senior Project Manager
For Ilembe EPC Joint Venture
032 438 8335



KWAZULU-NATAL

children's hospital trust

09th December 2014

To WHOM IT MAY CONCERN

RE: RECOMMENDATION LETTER FOR RUBEN REDDY ARCHITECTS

Project Name: KZN Children's Hospital

Contract Value: R540 Million

Services: Architectural Design Services

Contract Date: 2009 - 2016

Dear Sir/Madam

Please accept this letter of recommendation for the architectural services provided by Ruben Reddy Architects on the above-mentioned project. Ruben Reddy Architects have executed their appointment in a professional and ethical manner.

The KZN Children's Hospital Trust recognises their high standards, quality of design and recommends their services without reservation. Please feel free to contact The KZN Children's Hospital Trust regarding the above recommendation for any further information required.

Yours sincerely

Dr Arthi Ramkissoon, CEO

Tel: 031 275 1540/ 082 410 5709

PO Box 38266, Point, Durban, 4069, South Africa

www.kznchildrenshospital.org.za

Tel: + 2782 4105709 | Trust Reg. No. IT944/2011/PMB | PBO No: 930040762 | VAT Registration Nr 4480263757

Trustees: Prof HM Coovadia, Dr A Ramkissoon, Dr Y Jugundran, Dr L Mubaiwa, Dr N McKerrow, Ms C Singh, Ms A A Gabriel, Mr Z Dlamini, Ms J van Niekerk

HEAD OFFICE

postal Private Bag x29 Gatesville 7766
physical PGWC Shared Services Center cnr Bosduif &
Volstruis Streets Bridgetown, 7764
website www.capenature.co.za
enquiries Wilfred Williams
telephone +27 21 483 0071 fax +27 86 528 9785
email wwilliams@capenature.co.za

7th April 2015

Professional Testimonial

RE: Ruben Reddy Architects

It is with great pleasure that CapeNature is able to recommend the Architectural Services of Ruben Reddy Architects insofar as their design prowess as well as their commendable and efficient Project Management capability.

Having been tasked with the transformation of eco-tourism products throughout the Western Cape Province, CapeNature highlights the efforts of partners and service providers who value and proliferate our vision of environmental responsibility through energy efficient and user friendly public infrastructure. **Mr Rushdy Parker** at Ruben Reddy Architects has successfully assisted CapeNature to achieve this vision at:

- The Shamrock Lodge Hiking Hut at Hottentot's Holland Nature Reserve
- The Kliphuis Manager's Residences at Kliphuis on the edge of the Cederberg Wilderness
- The Exhibition Building and Visitor's Centre at Bird Island Nature Reserve
- The Admin Centre, Tourist Chalets, Ablution Blocks and Storage facilities at Algeria within the Cederberg Wilderness

Their commitment and readiness to conform to client input as well as tight deadlines have made this recommendation a necessary point at the end of successful projects and a hopeful look forward to breaking ground anew with Ruben Reddy's signature brand of quality and delivery.

With Kind Regards



Wilfred Williams
Programme Manager: Tourism Management Services
CapeNature

03rd October 2016

TO WHOM IT MAY CONCERN

RECOMMENDATION LETTER FOR RUBEN REDDY ARCHITECTS

Dear Sir/Madam

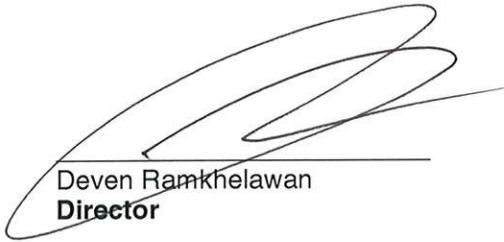
Please accept this letter of Recommendation of the remarkable professional project and Architectural services provided by Ruben Reddy Architects for Lotus Gardens - New Primary School, Pretoria.

Ruben Reddy Architects executes their services in a professional and ethical manner during their project.

I wish to acknowledge the high standard of service that goes beyond their expectations and I would recommend their services to you most enthusiastically and without reservations.

Please feel free to contact me regarding the above recommendation

Yours faithfully,



Deven Ramkhelawan
Director





MNJIYA CONSULTING ENGINEERS

Midrand Branch: 167 14th Road Whitby Manor
Office Estate, MCE House, Noordwyk, Midrand, 1685

PO Box 7017, Halfway House, 1685

Tel: 011 318 2849/50 • Fax: 011 318 2851

Polokwane Branch: 48 Cnr Landros Mare & Thabo Mbeki
3rd Floor, Standard Bank Building, Polokwane

P O Box 11838, Bendor park, 0713

Tel: 015 291 4748 • Fax: 015 291 4311

www.mnjiya.co.za

Enquiries: efious@mnjiya.co.za

Date: 12/03/2014

To whom it may concern

Re: Letter of Reference – Mabopane Station Upgrade (R160m)

This serves to confirm that Ruben Reddy Architects (RRA) were appointed architects as part of the Mnjiya Consulting Engineers team to upgrade the Mabopane Station.

From the inception of the project RRA were extremely committed in preparing as built drawings, status quo reports and formulating the brief on behalf of the client (Prasa/Intersite).

RRA brought innovative design solutions to the project and assisted with preparing the presentations for stage approvals with the clients.

RRA worked extremely well in a team environment and assisted in coordinating all consultants inputs to make sure the design is fully coordinated.

RRA is extremely professional and fully committed to any project they work on and will not hesitate to work with them again on future projects.

If you have any queries please do not hesitate to contact me.

.....
Mr E Mugwagwa
CEO

DIRECTORS : N.E. MKHABELE - E.F. MUGWAGWA



(898)

AN ISO 9001 CERTIFIED COMPANY
AN ISO 18001 CERTIFIED COMPANY



PSIRA (2223052)



22 September 2016

TO WHOM IT MAY CONCERN

This serves to confirm that

RUBEN REDDY ARCHITECTS

were part of the architectural team appointed to design and construct the recently completed 300 bed Nelson Mandela Children's Hospital in Parktown, Johannesburg.

Throughout the project period, Ruben Reddy Architects provided a high standard of service in a professional and ethical manner. Their willingness and ability to go beyond their contractual obligations is commended. NMCH Trust is appreciative of the role Ruben Reddy Architects played to ensure the hospital was completed on time.

We are happy to recommend Ruben Reddy Architects for any project they may bid on and we wish them every success in their future endeavours.

Sincerely

SIBONGILE MKHABELA
CHIEF EXECUTIVE OFFICER

Non-Profit Organisation: Reg. No: 074-207
Web address: <http://www.nelsonmandelachildrenshospital.org>
P.O. Box 797, Highlands North, 2037. 21 Eastwold Way, Saxonwold, 2196. Tel: (+27 11) 274-5600 Fax: (+27 11) 486-3914

Founder
Nelson Mandela Children's Fund

Chairperson
Graça Machel

Chief Executive Officer
Sibongile Mkhabela

Trustees
Babita Deokaran • Adam Habib • Shirley Mabusela • Nana Magomola • George Mahlangu • Zodwa Manase • Zenani Mandela-Dlamini
Tito Mboweni • Irene Menell • Tiny Mhinga • Ishmael Mkhabela • Moss Ngoasheng • Charles Priebatsch • Joe Seoloane



AN INITIATIVE OF NELSON MANDELA CHILDREN'S FUND



27 September 2016

TO WHOM IT MAY CONCERN

SIP Project Managers (Pty) LTD.
Reg no: 1984/006110/07

JOHANNESBURG
10 Woodmead Estate,
1 Woodmead Drive,
Woodmead, Sandton

PO Box 1297, Gallo Manor 2052

Tel: +27 (11) 233 6800
Fax: +27 (11) 233 6801

CAPE TOWN
Parklane Block B, 3rd Floor,
Cnr. Alexandra & Park Road,
Pinelands 7405

P O Box 51077
Waterfront, Cape Town 8002

Tel: 021 511 3040
Fax: 021 511 3048

DURBAN
Suite 1, 3 Rydall Vale Park
Douglas Saunders Drive,
La Lucia Ridge

Postnet Suite 135, Private Bag X01
Umhlanga Rocks, 4320

Tel: 031 583 4260
Fax: 031 583 4270

Website: www.sippm.co.za

RE: RECOMMENDATION LETTER FOR RUBEN REDDY ARCHITECTS

Dear Sir/Madam

Please accept this letter of recommendation for the remarkable professional project and architectural services provided by Ruben Reddy Architects for Nelson Mandela Children's Hospital, Ruben Reddy Architects has executed their services in a professional and ethical manner during their project.

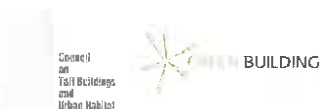
I wish to acknowledge the high standard of service, which goes beyond their expectations, and I would recommend their services to you most enthusiastically and without reservations.

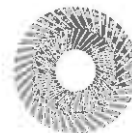
Please feel free to contact me regarding the above recommendation

Kind Regards


MPHOTO THABANE

For SIP Project (Pty) Ltd





PRASA CRES
30 Wolmerans Street
Braamfontein
2017
12 March 2014

To whom it may concern

Re: Letter of Reference – Pretoria Bus Terminus

This serves to confirm that Ruben Reddy Architects (RRA) were appointed by Maragela Consulting Engineers as part of the Maragela consortium that PRASA CRES appointed to upgrade the existing Pretoria Bus Terminus at Pretoria Station Precinct

From the start of the project RRA were extremely committed in sharing their prior experience on other projects and preparing as built drawings, status quo reports and formulating the brief on behalf of the client (Prasa Cres).

RRA has brought innovative design solutions/ideas to this complex heritage project, and assisted the team with preparing the presentations for stage approvals.

RRA has worked extremely well in a team environment and assisted in coordinating all consultants' inputs to make sure the design is fully coordinated.

RRA is extremely professional and fully committed to any project they work on and will not hesitate to work with them again on future projects.

Should you have any further queries, please do not hesitate to contact me.

Ms Lusanda Tyebileyo

Project Manager
Strategic Portfolio Programme Management
Northern Gauteng Region
Prasa Cres
012 748 7574
ltylebileyo@prasa.com



Mangosuthu

University of Technology



UMLAZI - KWAZULU-NATAL

P.O. Box 12363 Jacobs 4026 Durban Tel: 031 907 7111 Fax: 031 907 2892

11 November 2014

Letter of Recommendation: RUBEN REDDY ARCHITECTS CC

To Whom It May Concern

It is my pleasure to write this letter of recommendation on behalf of Ruben Reddy Architects CC,

Please accept this letter as my recommendation of the remarkable professional architectural services provided by Ruben Reddy Architects.

Ruben Reddy Architects CC was appointed by Mangosuthu University of Technology to render architectural services for a New Admin Building,

They have executed their services in a professional and ethical manner throughout the project and have a vast knowledge of the built environment, their knowledge of the educational facilities at both the tertiary and basic level education is remarkable.

I wish to acknowledge the high standards of performance that goes beyond our expectations

We look forward to working with them again and would recommend them to anyone for a similar service on projects of a similar nature and scale,

I recommend Ruben Reddy Architects to you most enthusiastically and without reservations

Please contact me regarding the above recommendation.

Yours Faithfully

Mike Maree

0825771596

27 November 2014

Letter of Reference; Ruben Reddy Architects.

To whom it may concern;

ARiYA Project Managers are fortunate to be participating in several projects with Ruben Reddy Architects, certain of which are in the education sector. These are namely the new Teachers Training Building at the Central University of Technology in Bloemfontein, as well as two Schools forming part of the national accelerated schools initiative

Ruben Reddy Architects, have displayed an innovative and creative approach when faced with complex and challenging aspects with respect to the above mentioned projects, and are currently playing a key role in enabling the successful project design and delivery within the constraints of time, cost and quality.

We have found Ruben Reddy Architects to be a highly effective, efficient and professional company. We can confidently recommend them for the provision of professional architectural services in the built environment.

Yours faithfully,



Michael Deane

Director | Operations & Asset Management |

ARiYA Project Managers (Pty) Ltd



GREEN WILLOWS PROPERTIES 9 (PTY) LTD

REGISTRATION No: 2002/026179/07 VAT No: 4880206703

105A MSK House, 13 Buitengracht Street, Cape Town 8001

P O Box 2891, Cape Town 8000

Tel: 021-418-4726 Fax: 088-021-418-4726

21st February 2017

To Whom it May Concern

Letter of Reference: Ruben Reddy Architects

We have contracted Ruben Reddy Architects as the lead architects on several projects in Cape Town, including:

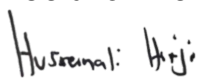
- | | |
|--|--------------------------------------|
| 1) New Tsogo Sun Cape Town | (R 500 million value)Completion 2017 |
| 2) New Lord Charles Village | Current |
| 3) Green Willows Office fit-out | Current |
| 4) Green Willows Residential refurbishment | Current |

Ruben Reddy Architects have performed their tasks with diligence, integrity, and professionalism and are currently playing a major role in enabling a successful project delivery within the constraints of time, cost and quality.

In terms of their Quality of Design, Contract Administration and Delivery, we would consider their service offering as very good.

In accordance with our standard practice, this letter of reference is given in good faith and without any liability on our part.

Yours faithfully



H Hirji, BSc(Hons), MSc, ACGI, DIC
DIRECTOR

Block A, Torino Court, 4 Crooked Lane, Hillcrest, 3610
PO Box 29164, Hillcrest, 3650, South Africa
Tel: +27 (0)31 765 1669 Fax: +27 (0)31 765 8540
enquiries@eigergroup.co.za www.eigergroup.co.za

02 November 2011

To: RRA
Re: Ruben Reddy Architects

To whom it may concern,

This letter serves to confirm that the above mentioned architects did the design and layout for 3 of our Developments all in the Riverhorse Valley.

1. Heron Park - Project Value R30 000 000.00
2. Island Office Park - Project Value R150 000 000.00
3. Island Office Block - Project Value R25 000 000.00

We highly recommend them as the design and layout of our developments was handled with the utmost professionalism.

Yours Faithfully,

A handwritten signature in black ink, appearing to read "Brett Carter Eigenmann".

Brett Carter Eigenmann

2017.02.06

Swiftair International Letter of Reference – Ruben Reddy Architects PTY LTD

This serves to confirm that Ruben Reddy Architects PTY LTD were employed as Architects for the Gazetted architectural work stages 1-6 for the design and construction of Swiftair International offices:

- 285 Grosvenor Road, Carrington Heights, Durban

Swiftair International was satisfied with the professionalism and expertise provided by Ruben Reddy Architects and very pleased with the final projects that were completed on programme and within Budget. Swiftair will therefore recommend the services of Ruben Reddy Architects without hesitation.

Should you wish further information, please contact Swiftair International:

Swift House

285 Grosvenor Road

Carrington Heights

Durban, South Africa

T: +27 31 273 3260

F: +27 31 261 8320

Yours faithfully,



Anand Govender
Audit Manager
Swiftair International

2017.02.06

Swiftair International Letter of Reference – Ruben Reddy Architects PTY LTD

This serves to confirm that Ruben Reddy Architects PTY LTD were employed as Architects for the Gazetted architectural work stages 1-6 for the design and construction of Swiftair International offices:

- Aero Star Business Park, Jet Park Road, Witfield, Johannesburg

Swiftair International was satisfied with the professionalism and expertise provided by Ruben Reddy Architects and very pleased with the final projects that were completed on programme and within Budget. Swiftair will therefore recommend the services of Ruben Reddy Architects without hesitation.

Should you wish further information, please contact Swiftair International:

Swift House

285 Grosvenor Road

Carrington Heights

Durban, South Africa

T: +27 31 273 3260

F: +27 31 261 8320

Yours faithfully,



Anand Govender
Audit Manager
Swiftair International

16 April 2014

Re: Letter of Reference: **Ruben Reddy Architects (RRA)**

To Whom it May Concern

I have worked with Ruben Reddy Architects since 2008 on the R320m Thohoyandou Intermodal Facility.

They also joined us on the International Study tour on Transit Orientated Developments/Intermodals visiting the following countries to research on best international practice and lessons learnt:

- UK
- France
- Spain
- Germany
- Hong Kong
- Thailand

RRA was found to be very professional, their resources are obliging and definitely team players who ensure that their role contributes to the success of the project.

RRA ensures that all tasks, presentations and related deliverables are prepared to meet project programmes and are timeously submitted to the key stakeholders including the professional team.

RRA resources are readily available to assist in problem solving and resolution of project issues.

The professional services of RRA are recommended to any client.

If you have any queries please do not hesitate to contact me

Regards



Mr P Gombert
Executive Manager: Property Investments

**Enquiries:** efious@mnjiya.co.za**Date:** 12/03/2014**To whom it may concern****Re: Letter of Reference – Thohoyandou Intermodal Facility (R360m)**

This serves to confirm that Ruben Reddy Architects (RRA) were appointed architects as part of the Mnjiya Consulting Engineers team to design the new Intermodal Facility in Thohoyandou.

From the inception of the project RRA were extremely committed in preparing status quo reports, precedent studies and formulating the brief on behalf of the client (Intersite/LDRT/Thulamela Municipality).

RRA brought innovative design solutions to the project and assisted with preparing the presentations for stage approvals with the clients.

RRA was always willing to engage with the broader community stakeholders via presentations at community halls etc

RRA worked extremely well in a team environment and assisted in coordinating all consultants inputs to make sure the design is fully coordinated.

RRA worked extremely well with the contract WBHO and offered design and technical solutions where required.

RRA is extremely professional and fully committed to any project they work on and will not hesitate to work with them again on future projects.

If you have any queries please do not hesitate to contact me.

.....
Mr E Mugwagwa
CEO

DIRECTORS : N.E. MKHABELE - E.F. MUGWAGWA



MNJIYA CONSULTING ENGINEERS

Midrand Branch: 167 14th Road Whitby Manor
Office Estate, MCE House, Noordwyk, Midrand, 1685

PO Box 7017, Halfway House, 1685

Tel: 011 318 2849/50 • Fax: 011 318 2851

Polokwane Branch: 48 Cnr Landros Mare & Thabo Mbeki
3rd Floor, Standard Bank Building, Polokwane

P O Box 11838, Bendor park, 0713

Tel: 015 291 4748 • Fax: 015 291 4311

www.mnjiya.co.za

Enquiries: efious@mnjiya.co.za

Date: 12/03/2014

To whom it may concern

Re: Letter of Reference – Mabopane Station Upgrade (R160m)

This serves to confirm that Ruben Reddy Architects (RRA) were appointed architects as part of the Mnjiya Consulting Engineers team to upgrade the Mabopane Station.

From the inception of the project RRA were extremely committed in preparing as built drawings, status quo reports and formulating the brief on behalf of the client (Prasa/Intersite).

RRA brought innovative design solutions to the project and assisted with preparing the presentations for stage approvals with the clients.

RRA worked extremely well in a team environment and assisted in coordinating all consultants inputs to make sure the design is fully coordinated.

RRA is extremely professional and fully committed to any project they work on and will not hesitate to work with them again on future projects.

If you have any queries please do not hesitate to contact me.

.....
Mr E Mugwagwa
CEO

DIRECTORS : N.E. MKHABELE - E.F. MUGWAGWA

08 August 2016

To WHOM IT MAY CONCERN

RE: RECOMMENDATION LETTER FOR RUBEN REDDY ARCHITECTS

Project Name: Wakefield Court – Prince Street

Contract Value: R10 million

Services: Architectural Design and Refurbishment Services

Contract date: 01 March – 31 July 2016

Dear Sir/Madam

Please accept this letter of recommendation for the architectural and refurbishment services provided by Ruben Reddy Architects on the above mentioned project. Ruben Reddy Architects have executed their appointment in a professional and ethical manner.

Maternal Adolescent and Child Health Systems (MatCH HS) recognises their high standards, quality of design and recommends their services without reservation. Please feel free to contact Maternal Adolescent and Child Health Systems regarding the above recommendation for any further information required.

Yours sincerely



Dr Arthi Ramkissoon, Executive Director
Tel: 031 275 1540/ 082 410 5709



public works

Department:
Public Works
REPUBLIC OF SOUTH AFRICA

Room 1410
14th Floor
Customs House
Heerengracht
Foreshore

09 December 2014

Letter of Reference; Ruben Reddy Architects.

To Whom It May Concern:

Department of Public Works are fortunate to be participating several projects with Ruben Reddy Architects.

Ruben Reddy Architects, have displayed an innovative and creative approach when faced with complex and challenging aspects with respect to the above mentioned projects, and are currently playing a key role in enabling the successful project design and delivery within the constraints of time, cost and quality

We have found Ruben Reddy Architects to be highly effective, efficient and professional company. We can confidently recommend them for the provision of professional architectural services in the built environment.

Yours faithfully,

BJ Mong
Chief Project Manager (PCPM)
bj.mong@dpw.gov.za
Department of Public Works