



# FLAVOR PERKS<sup>®</sup> & LIQUID SWEETENERS

- \* Enticing consumer-preferred flavors
- \* No messy bottles or granular products
- \* Kosher certified

At GoodWest, consumer-preferred products are fundamental. They're supported by our industry-leading dispenser program and best-in-class customer service.

We call it our *Value Triad* – Superior Products, Turnkey Program, and Best-in-Class Customer Service – the foundations of a profitable customer partnership.



## FLAVOR PERKS® & LIQUID SWEETENERS

Java Works® Flavor Perks® and Liquid Sweeteners will help you "clean up" at your beverage station! Our tantalizing shelf-stable syrups and sweeteners come with a portion-controlled dispenser, keeping your counter free from sticky bottles and messy granular packets. Great for both hot and cold beverages, as the sugar is pre-dissolved.



French Vanilla



Hazelnut



Irish Cream



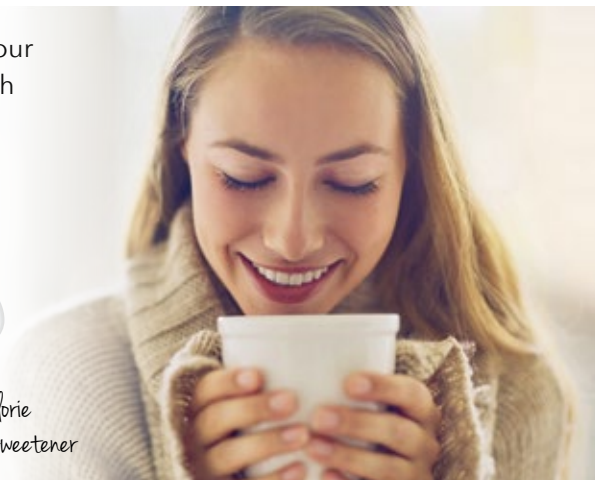
Caramel



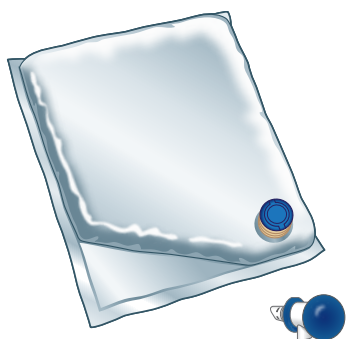
Pure Cane  
Sugar



No Calorie  
Sucralose Sweetener



### ASEPTIC PACKAGING



HIGHEST  
FOOD SAFETY



NON-REFRIGERATED  
STORAGE



EXTENDED  
SHELF LIFE

### PRODUCT SPECIFICATIONS

PRODUCT	ITEM CODE	PACK SIZE	CASE DIMENSIONS	CASE CUBE	GROSS WT/CASE	SHELF LIFE*
French Vanilla	00022	4/1.5 L	11.5"L x 11.5"W x 6"H	.559	18.50	420 days
Hazelnut	00023	4/1.5 L	11.5"L x 11.5"W x 6"H	.559	18.50	420 days
Caramel	00024	4/1.5 L	11.5"L x 11.5"W x 6"H	.559	18.50	420 days
Irish Cream	00026	4/1.5 L	11.5"L x 11.5"W x 6"H	.559	18.50	420 days
Pure Cane Sugar	00020	3/2 L	11.5"L x 11.5"W x 6"H	.559	18.45	365 days
No Calorie Sucralose Sweetener	00010	3/2 L	11.5"L x 11.5"W x 6"H	.559	14.70	365 days

4/1.5 L bag or 3/2 L = 203 fl oz

Flavor Perks®: each case yields about 600 to 700 servings.

Pure Cane Sugar and No Calorie Sucralose Sweetener: each case yields the equivalent of 3000 packets.

\*Shelf life from date of manufacture. STORE AT AMBIENT TEMPERATURE (33-80° F). **DO NOT FREEZE. USE WITHIN 90 DAYS AFTER OPENING.**

NO ALLERGENS For ingredient listing and nutritional information, go to [www.goodwest.com](http://www.goodwest.com).



### TURNKEY PROGRAM

- In-house US equipment manufacture means rapid implementation
- Simple set-up - no electrical hookup
- Return equipment without penalty
- Bag-in-box packaging makes clean-up easy
- Risk free - no dispenser investment required
- Custom graphics available



**6-Port Model # GW-TS6**  
9.5"W x 22.5"D x 28"H  
Head clearance when open: 39.75"



**4-Port Model # GW-TS4**  
9.5"W x 22.5"D x 28"H  
Head clearance when open: 39.75"



**2-Port Model # GW-TS2**  
9.5"W x 14"D x 21"H  
Head clearance when open: 21"



*At GoodWest, our only focus is coffee refreshment.  
We've been at it for over 25 years, with 30,000 plus installations nationwide.  
Best of all, we are easy to work with and flexible at every level.*

*Let us be your partner for profit!*