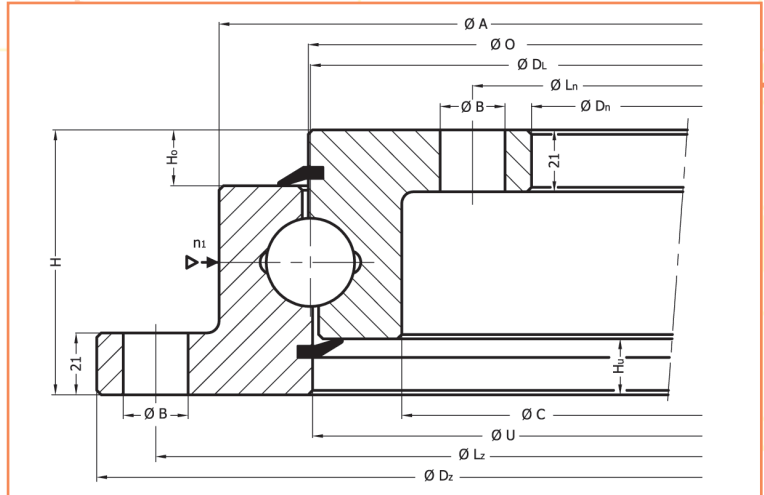
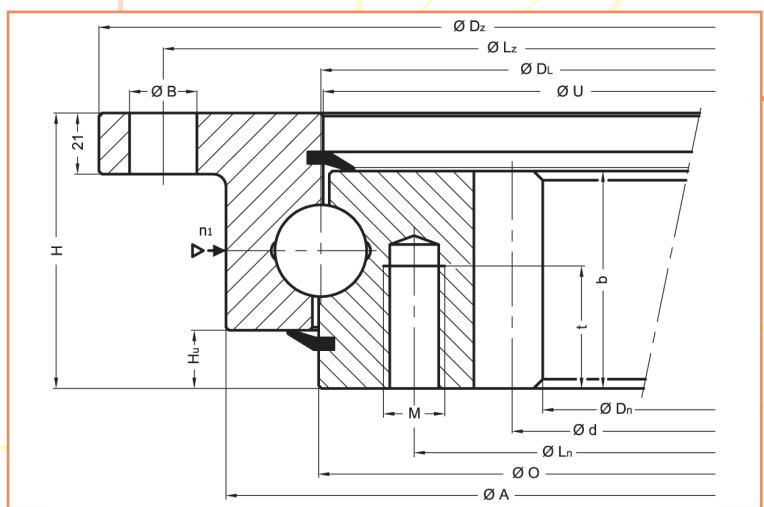


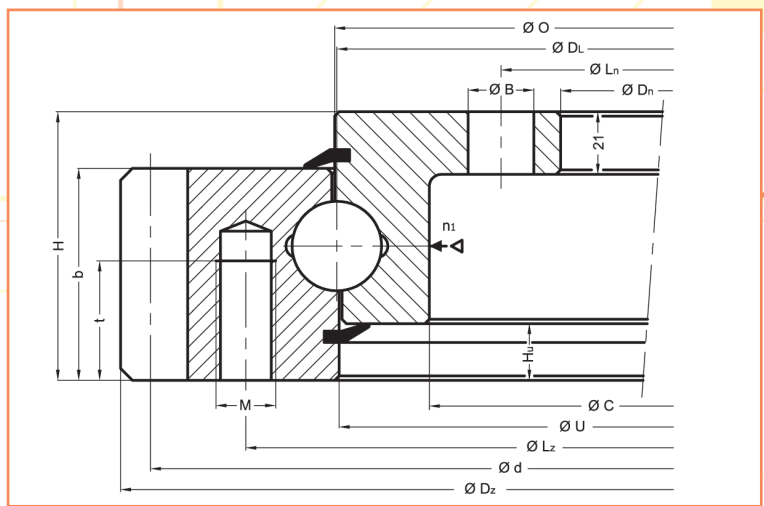
M MODEL 2000



Drawing Nr.	DL	Dz	Dn	H	Lz	Ln	nz	B/M	nn	B/M	t	O	U	A	C	Hu	Ho	d	m	z	b	T
	(mm)	(mm)	(mm)	(mm)	(mm)	(mm)	(mm)	(mm)	(mm)	(mm)	(mm)	(mm)	(mm)	(mm)	(mm)	(mm)	(mm)	(mm)	(mm)	(mm)	(mm)	(kg)
2042.10.30.0-0.0955.00	955	1100	805	90	1060	845	30	22	30	22	-	956,5	953,5	1017	893	19	19	-	-	-	-	131
2044.10.30.0-0.1055.00	1055	1200	905	90	1160	945	30	22	30	22	-	1056,5	1053,5	1117	993	19	19	-	-	-	-	145
2046.10.30.0-0.1155.00	1155	1300	1005	90	1260	1045	36	22	36	22	-	1156,5	1153,5	1217	1093	19	19	-	-	-	-	159
2048.10.30.0-0.1255.00	1255	1400	1105	90	1360	1145	42	22	42	22	-	1256,5	1253,5	1317	1193	19	19	-	-	-	-	172
2050.10.30.0-0.1355.00	1355	1500	1205	90	1460	1245	42	22	42	22	-	1356,5	1353,5	1417	1293	19	19	-	-	-	-	186
2052.10.30.0-0.1455.00	1455	1600	1305	90	1560	1345	48	22	48	22	-	1456,5	1453,5	1517	1393	19	19	-	-	-	-	200



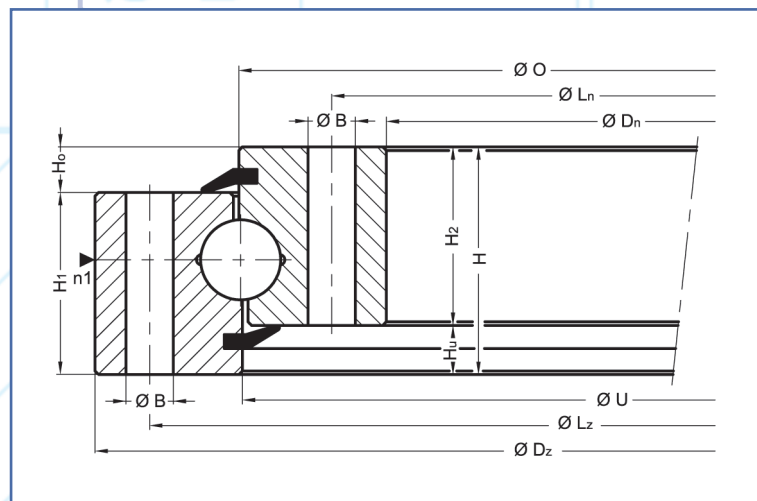
Drawing Nr.	DL	Dz	Dn	H	Lz	Ln	nz	B/M	nn	B/M	t	O	U	A	C	Hu	Ho	d	m	z	b	T
	(mm)	(mm)	(mm)	(mm)	(mm)	(mm)	(mm)	(mm)	(mm)	(mm)	(mm)	(mm)	(mm)	(mm)	(mm)	(mm)	(mm)	(mm)	(mm)	(mm)	(mm)	(kg)
2066.20.30.0-0.0955.00	955	1100	812	90	1060	894	30	22	30	M 20	40	956,5	953,5	1017	-	19	-	830	10	83	71	156
2068.20.30.0-0.1055.00	1055	1200	912	90	1160	994	30	22	30	M 20	40	1056,5	1053,5	1117	-	19	-	930	10	93	71	176
2070.20.30.0-0.1155.00	1155	1300	1012	90	1260	1094	36	22	36	M 20	40	1156,5	1153,5	1217	-	19	-	1030	10	103	71	192
2072.20.30.0-0.1255.00	1255	1400	1112	90	1360	1194	42	22	42	M 20	40	1256,5	1253,5	1317	-	19	-	1130	10	113	71	208
2074.20.30.0-0.1355.00	1355	1500	1212	90	1460	1294	42	22	42	M 20	40	1356,5	1353,5	1417	-	19	-	1230	10	123	71	226
2076.20.30.0-0.1455.00	1455	1600	1312	90	1560	1394	48	22	48	M 20	40	1456,5	1453,5	1517	-	19	-	1330	10	133	71	243



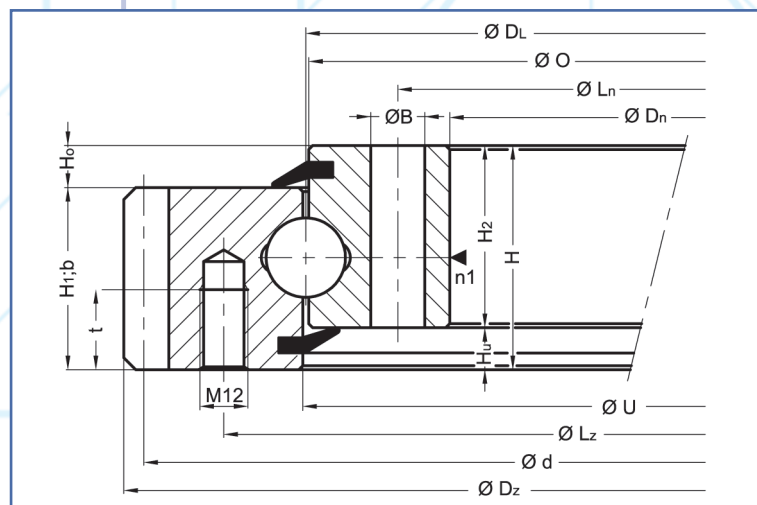
Drawing Nr.	DL	Dz	Dn	H	Lz	Ln	nz	B/M	nn	B/M	t	O	U	A	C	Hu	Ho	d	m	z	b	T
	(mm)	(mm)	(mm)	(mm)	(mm)	(mm)	(mm)	(mm)	(mm)	(mm)	(mm)	(mm)	(mm)	(mm)	(mm)	(mm)	(mm)	(mm)	(mm)	(mm)	(mm)	(kg)
2054.30.30.0-0.0955.00	955	1098	805	90	1016	845	30	M 20	30	22	40	956,5	953,5	-	893	19	-	1080	9	120	71	165
2056.30.30.0-0.1055.00	1055	1200	905	90	1116	945	30	M 20	30	22	40	1056,5	1053,5	-	993	19	-	1180	10	118	71	183
2058.30.30.0-0.1155.00	1155	1300	1005	90	1216	1045	36	M 20	30	22	40	1156,5	1153,5	-	1093	19	-	1280	10	128	71	200
2060.30.30.0-0.1255.00	1255	1400	1105	90	1316	1145	42	M 20	30	22	40	1256,5	1253,5	-	1193	19	-	1380	10	138	71	216
2062.30.30.0-0.1355.00	1355	1500	1205	90	1416	1245	42	M 20	30	22	40	1356,5	1353,5	-	1293	19	-	1480	10	148	71	234
2064.30.30.0-0.1455.00	1455	1600	1305	90	1516	1345	48	M 20	30	22	40	1456,5	1453,5	-	1393	19	-	1580	10	158	71	250

grease nipple (according to customer request) filler plug

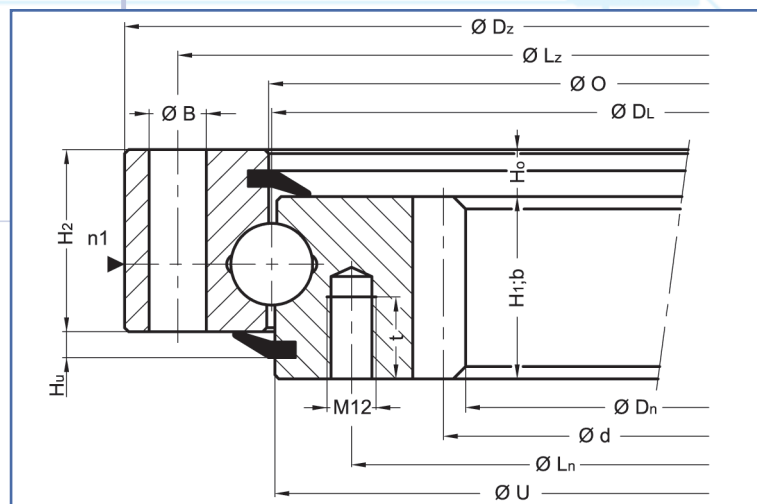
MODEL 3000



Drawing Nr.	Dz	Dn	H	Lz	Ln	n	B	M	t	O	U	H1	H2	Hu	Ho	d	m	z	x.m	b	T
	(mm)	(mm)	(mm)	(mm)	(mm)		(mm)	(mm)	(mm)	(mm)	(mm)	(mm)	(mm)	(mm)	(mm)	(mm)	(mm)	(mm)	(mm)	(mm)	(kg)
3018.10.20.0-0.0414.00	486	342	56	460	368	24	13,5	12	-	412,5	415,5	45,5	45,5	10,5	10,5	-	-	-	-	-	29
3020.10.20.0-0.0544.00	616	472	56	590	498	32	13,5	12	-	542,5	545,5	45,5	45,5	10,5	10,5	-	-	-	-	-	37
3022.10.20.0-0.0644.00	716	572	56	690	598	36	13,5	12	-	642,5	645,5	45,5	45,5	10,5	10,5	-	-	-	-	-	44
3024.10.20.0-0.0744.00	816	672	56	790	698	40	13,5	12	-	742,5	745,5	45,5	45,5	10,5	10,5	-	-	-	-	-	52
3026.10.20.0-0.0844.00	916	772	56	890	798	40	13,5	12	-	842,5	845,5	45,5	45,5	10,5	10,5	-	-	-	-	-	60
3028.10.20.0-0.0944.00	1016	872	56	990	898	44	13,5	12	-	942,5	945,5	45,5	45,5	10,5	10,5	-	-	-	-	-	67
3030.10.20.0-0.1094.00	1166	1022	56	1140	1048	48	13,5	12	-	1092,5	1095,5	45,5	45,5	10,5	10,5	-	-	-	-	-	77

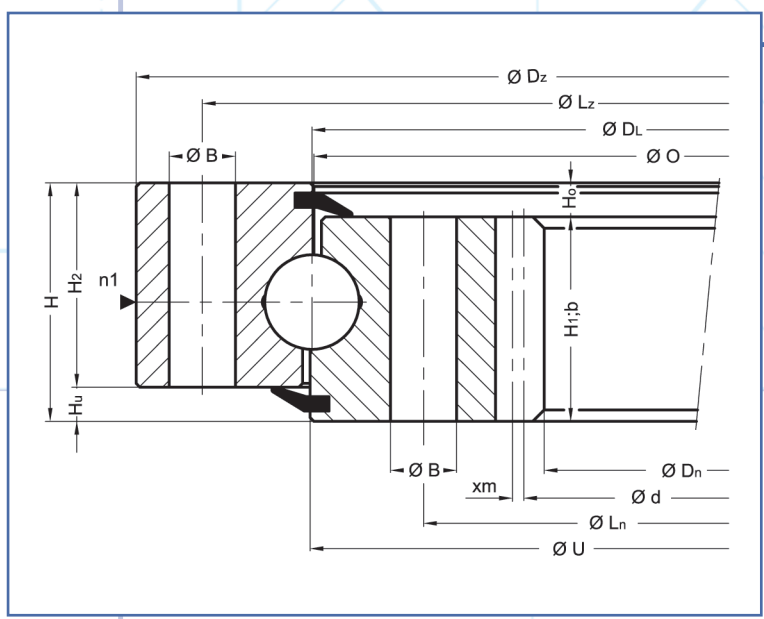
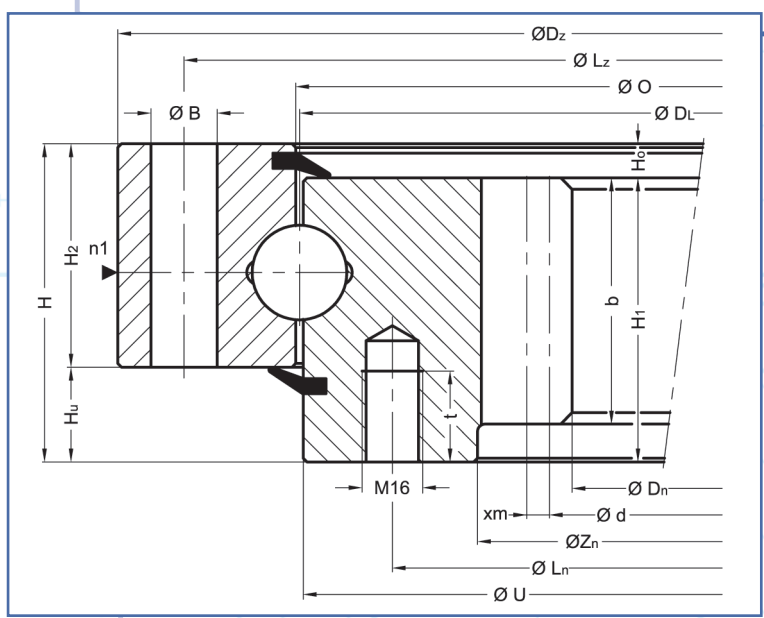


Drawing Nr.	Dz	Dn	H	Lz	Ln	n	B	M	t	O	U	H1	H2	Hu	Ho	d	m	z	x.m	b	T
	(mm)	(mm)	(mm)	(mm)	(mm)		(mm)	(mm)	(mm)	(mm)	(mm)	(mm)	(mm)	(mm)	(mm)	(mm)	(mm)	(mm)	(mm)	(mm)	(kg)
3032.30.20.0-0.0414.00	505	342	56	455	368	20/24	13,5	12	20	412,5	415,5	45,5	45,5	10,5	10,5	495	5	99	-	45,5	31
3034.30.20.0-0.0544.00	642	472	56	585	498	28/32	13,5	12	20	542,5	545,5	45,5	45,5	10,5	10,5	630	6	105	-	45,5	43
3036.30.20.0-0.0644.00	744	572	56	685	598	32/36	13,5	12	20	642,5	645,5	45,5	45,5	10,5	10,5	732	6	122	-	45,5	52
3038.30.20.0-0.0744.00	840	672	56	785	698	36/40	13,5	12	20	742,5	745,5	45,5	45,5	10,5	10,5	828	6	138	-	45,5	59
3040.30.20.0-0.0844.00	952	772	56	885	798	36/40	13,5	12	20	842,5	845,5	45,5	45,5	10,5	10,5	936	8	117	-	45,5	71
3042.30.20.0-0.0944.00	1048	872	56	985	898	40/44	13,5	12	20	942,5	945,5	45,5	45,5	10,5	10,5	1032	8	129	-	45,5	77
3044.30.20.0-0.1094.00	1200	1022	56	1135	1048	44/48	13,5	12	20	1092,5	1095,5	45,5	45,5	10,5	10,5	1184	8	148	-	45,5	91



Drawing Nr.	Dz	Dn	H	Lz	Ln	n	B	M	t	O	U	H1	H2	Hu	Ho	d	m	z	x.m	b	T
	(mm)	(mm)	(mm)	(mm)	(mm)		(mm)	(mm)	(mm)	(mm)	(mm)	(mm)	(mm)	(mm)	(mm)	(mm)	(mm)	(mm)	(mm)	(mm)	(kg)
3046.20.20.0-0.0414.00	486	326,5	56	460	375	24	13,5	12	20	412,5	415,5	45,5	45,5	10,5	10,5	335	5	67	-	45,5	31
3048.20.20.0-0.0544.00	616	445,2	56	590	505	32	13,5	12	20	542,5	545,5	45,5	45,5	10,5	10,5	456	6	76	-	45,5	42
3050.20.20.0-0.0644.00	716	547,2	56	690	605	36	13,5	12	20	642,5	645,5	45,5	45,5	10,5	10,5	558	6	93	-	45,5	50
3052.20.20.0-0.0744.00	816	649,2	56	790	705	40	13,5	12	20	742,5	745,5	45,5	45,5	10,5	10,5	660	6	110	-	45,5	58
3054.20.20.0-0.0844.00	946	737,6	56	890	805	40	13,5	12	20	842,5	845,5	45,5	45,5	10,5	10,5	752	8	94	-	45,5	69
3056.20.20.0-0.0944.00	1016	841,6	56	990	905	44	13,5	12	20	942,5	945,5	45,5	45,5	10,5	10,5	856	8	107	-	45,5	76
3058.20.20.0-0.1094.00	1166	985,6	56	1140	1055	48	13,5	12	20	1092,5	1095,5	45,5	45,5	10,5	10,5	1000	8	125	-	45,5	91

M MODEL 3000



Drawing Nr.	Dz	Dn	H	Lz	Ln	n	B	M	O	U	H1	H2	Hu	Ho	d	m	z	x.m	b	T	t	Zu	hu
	(mm)	(mm)	(mm)	(mm)	(mm)		(mm)	(mm)	(mm)	(mm)	(mm)	(mm)	(mm)	(mm)	(mm)	(mm)	(mm)	(mm)	(mm)	(kg)	(mm)	(mm)	(mm)
3102.20.25.0-0.0886.00	980	784	77	944	850	36	17,5	16	885	887	67	56	21	10	800	8	100	-0	62	109	24	820	5
3104.20.25.0-0.1077.00	1170	960	84	1134	1040	36	17,5	16	1076	1078	66	64	20	18	980	10	98	-0	61	148	24	1010	5

Drawing Nr.	Dz	Dn	H	Lz	Ln	n	B	M	O	U	H1	H2	Hu	Ho	d	m	z	x.m	b	T	t	Zu	hu
	(mm)	(mm)	(mm)	(mm)	(mm)		(mm)	(mm)	(mm)	(mm)	(mm)	(mm)	(mm)	(mm)	(mm)	(mm)	(mm)	(mm)	(mm)	(kg)	(mm)	(mm)	(mm)
3106.20.20.0-0.0400.00	475	300	55	448	352	16	13,5	12	399	401	46	46	9	9	305	5	61	-2,5	46	33			
3108.20.20.0-0.0450.00	531	345	55	500	400	16	15,5	14	449	451	46	46	9	9	350	5	70	-2,5	46	38			
3110.20.20.0-0.0560.00	641	450	55	610	510	20	15,5	14	559	561	46	46	9	9	456	6	76	-3,0	46	51			
3112.20.20.0-0.0630.00	717	516	55	682	578	20	17,5	16	629	631	46	46	9	9	522	6	87	-3,0	46	59			
3114.20.20.0-0.0710.00	797	594	55	762	658	24	17,5	16	709	711	46	46	9	9	600	6	100	-3,0	46	68			

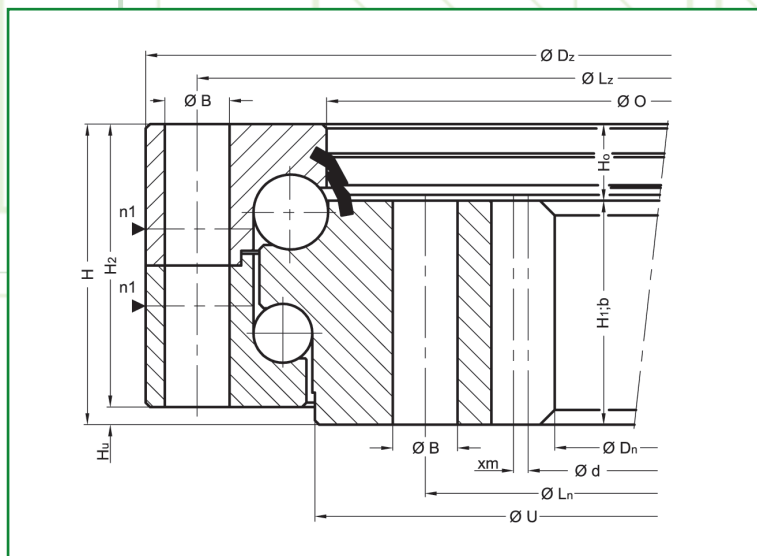
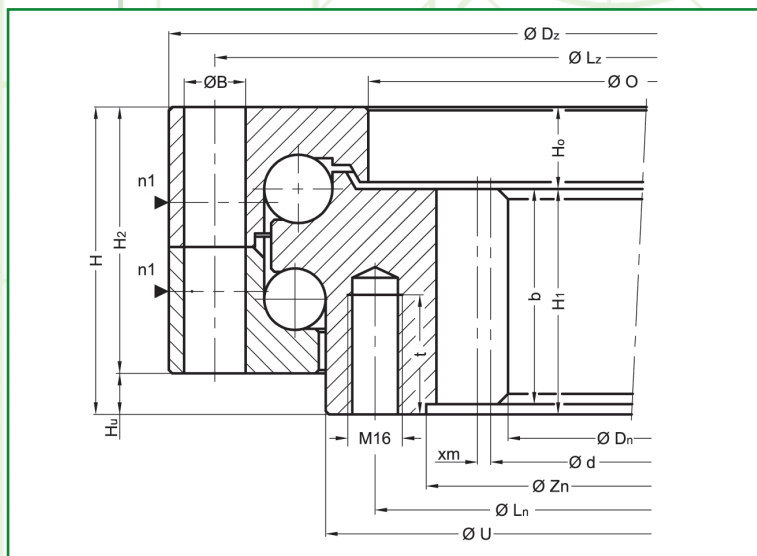
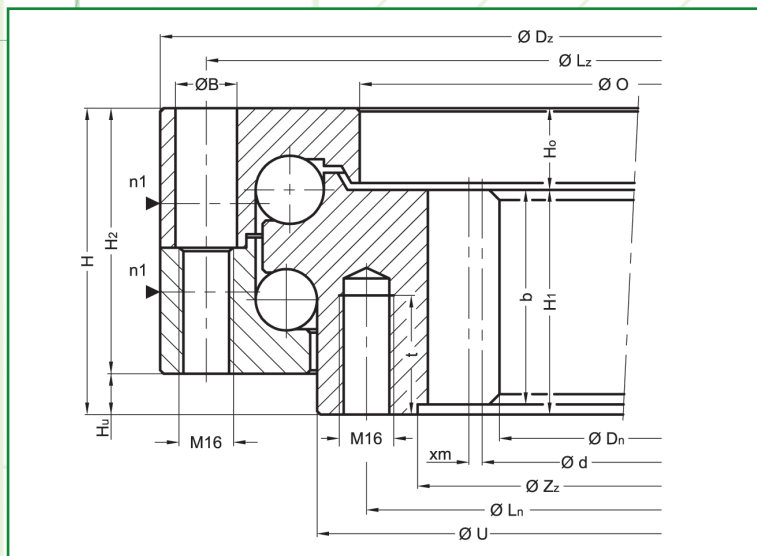
Drawing Nr.	Dz	Dn	H	Lz	Ln	n	B	M	O	U	H1	H2	Hu	Ho	d	m	z	x.m	b	T	t	Zu	hu
	(mm)	(mm)	(mm)	(mm)	(mm)		(mm)	(mm)	(mm)	(mm)	(mm)	(mm)	(mm)	(mm)	(mm)	(mm)	(mm)	(mm)	(mm)	(kg)	(mm)	(mm)	(mm)
3116.20.25.0-0.0886.00	980	752	63	944	827	36	17,5	16	885	887	54	54	9	9	760	8	95	-4,0	54	111			
3118.20.25.0-0.1077.00	1169	930	63	1134	1017	36	17,5	16	1076	1078	54	54	9	9	940	10	94	-5,0	54	140			
3120.20.25.0-0.1180.00	1287	1020	63	1243	1117	36	22	20	1179	1181	60	54	15	9	1030	10	103	-5,0	54	185			

Drawing Nr.	Dz	Dn	H	Lz	Ln	n	B	M	O	U	H1	H2	Hu	Ho	d	m	z	x.m	b	T	t	Zu	hu
	(mm)	(mm)	(mm)	(mm)	(mm)		(mm)	(mm)	(mm)	(mm)	(mm)	(mm)	(mm)	(mm)	(mm)	(mm)	(mm)	(mm)	(mm)	(kg)	(mm)	(mm)	(mm)
3130.20.40.0-0.1500.00	1634	1308	94	1582	1418	40	26	24	1498	1501	85	81	13	9	1320	12	110	-6,0	85	410			
3132.20.40.0-0.1700.00	1834	1498	94	1782	1618	44	26	24	1698	1701	85	81	13	9	1512	14	108	-7,0	85	475			

Drawing Nr.	Dz	Dn	H	Lz	Ln	n	B	M	O	U	H1	H2	Hu	Ho	d	m	z	x.m	b	T	t	Zu	hu
	(mm)	(mm)	(mm)	(mm)	(mm)		(mm)	(mm)	(mm)	(mm)	(mm)	(mm)	(mm)	(mm)	(mm)	(mm)	(mm)	(mm)	(mm)	(kg)	(mm)	(mm)	(mm)
3134.20.50.0-0.1800.00	1971	1554	109	1905	1695	36	33	30	1798	1802	100	99	10	9	1568	14	112	-7,0	100	762			
3136.20.50.0-0.2000.00	2171	1764	109	2105	1895	40	33	30	1998	2002	100	99	10	9	1778	14	127	-7,0	100	827			
3138.20.50.0-0.2240.00	2411	1984	109	2345	2135	48	33	30	2238	2242	100	99	10	9	2000	16	125	-8,0	100	961			
3140.20.50.0-0.2490.00	2661	2240	109	2595	2385	54	33	30	2488	2492	100	99	10	9	2256	16	141	-8,0	100	1053			
3142.20.50.0-0.2800.00	2971	2544	109	2905	2695	60	33	30	2798	2802	100	99	10	9	2560	16	160	-8,0	100	1205			

Drawing Nr.	Dz	Dn	H	Lz	Ln	n	B	M	O	U	H1	H2	Hu	Ho	d	m	z	x.m	b	T	t	Zu	hu
	(mm)	(mm)	(mm)	(mm)	(mm)		(mm)	(mm)	(mm)	(mm)	(mm)	(mm)	(mm)	(mm)	(mm)	(mm)	(mm)	(mm)	(mm)	(kg)	(mm)	(mm)	(mm)
3122.20.30.0-0.1120.00	1232	960	79	1188	1052	36	22	20	1118	1121	70	63	16	9	970	10	97	-5,0	70	206			
3124.20.30.0-0.1250.00	1362	1090	79	1318	1182	40	22	20	1248	1251	70	63	16	9	1100	10	110	-5,0	70	231			
3126.20.30.0-0.1400.00	1512	1224	89	1468	1332	44	22	20	1398	1401	80	63	16	9	1236	12	103	-5,0	80	296			
3128.20.30.0-0.1600.00	1712	1428	89	1668	1532	48	22	20	1598	1601	80	63	16	9	1440	12	120	-5,0	80	334			

MODEL 4000



Drawing Nr.	Dz	Dn	H	Lz	Ln	n	B	M	O	U	H1	H2	Hu	Ho	d	m	z	x.m	b	T	t	Zn	hu
	(mm)	(mm)	(mm)	(mm)	(mm)	(mm)	(mm)	(mm)	(mm)	(mm)	(mm)	(mm)	(mm)	(mm)	(mm)	(mm)	(mm)	(mm)	(mm)	(kg)	(mm)	(mm)	(mm)
4000.20.18.0-0.0748.00	823	648	77	798	705	24	17,5	16	710	734	54	74	3	23	660	6	110	-0,0	45	90	30	678	9
4002.20.20.0-0.0895.00	971	784	82	944	850	30	17,5	16	854	879	58	78	4	24	800	8	100	-0,0	50	118	35	820	8
4004.20.20.0-0.1085.00	1161	960	90	1134	1040	36	17,5	16	1044	1069	66	78	12	24	980	10	98	-0,0	55	154	35	1010	11
4006.20.20.0-0.1360.00	1440	1210	82	1410	1300	54	17,5	16	1319	1342	58	78	4	24	1220	10	122	-5,0	58	213	35	-	-

Drawing Nr.	Dz	Dn	H	Lz	Ln	n	B	M	O	U	H1	H2	Hu	Ho	d	m	z	x.m	b	T
	(mm)	(mm)	(mm)	(mm)	(mm)	(mm)	(mm)	(mm)	(mm)	(mm)	(mm)	(mm)	(mm)	(mm)	(mm)	(mm)	(mm)	(mm)	(mm)	(kg)
4050.20.25.0-0.1360.00	1460	1180	102	1425	1270	36	22	20	1337	1342	76	96	6	26	1190	10	119	-5,0	76	336
4052.20.25.0-0.1600.00	1700	1404	102	1665	1510	42	22	20	1577	1582	76	96	6	26	1416	12	118	-6,0	76	405

Drawing Nr.	Dz	Dn	H	Lz	Ln	n	B	M	O	U	H1	H2	Hu	Ho	d	m	z	x.m	b	T
	(mm)	(mm)	(mm)	(mm)	(mm)	(mm)	(mm)	(mm)	(mm)	(mm)	(mm)	(mm)	(mm)	(mm)	(mm)	(mm)	(mm)	(mm)	(mm)	(kg)
4054.20.30.0-0.1381.00	1500	1164	120	1455	1275	36	26	24	1352	1358	91	114	6	29	1176	12	98	-6,0	91	474
4056.20.30.0-0.1630.00	1750	1416	120	1705	1525	40	26	24	1602	1610	91	114	6	29	1428	12	119	-6,0	91	558
4058.20.30.0-0.1800.00	1920	1568	120	1875	1695	48	26	24	1771	1777	91	114	6	29	1582	14	113	-7,0	91	643
4060.20.30.0-0.1995.00	2115	1764	120	2070	1890	48	26	24	1966	1972	91	114	6	29	1778	14	127	-7,0	91	716
4062.20.30.0-0.2330.00	2450	2100	120	2405	2225	54	26	24	2301	2307	91	114	6	29	2114	14	151	-7,0	91	839
4064.20.30.0-0.2538.00	2660	2228	120	2615	2430	60	26	24	2509	2515	91	114	6	29	2304	16	144	-8,0	91	963

Drawing Nr.	Dz	Dn	H	Lz	Ln	n	B	M	O	U	H1	H2	Hu	Ho	d	m	z	x.m	b	T
	(mm)	(mm)	(mm)	(mm)	(mm)	(mm)	(mm)	(mm)	(mm)	(mm)	(mm)	(mm)	(mm)	(mm)	(mm)	(mm)	(mm)	(mm)	(mm)	(kg)
4066.20.35.0-0.1960.00	2090	1722	138	2045	1850	52	26	24	1926	1931	104	132	6	34	1736	14	124	-7,0	104	851
4068.20.35.0-0.2500.00	2630	2254	138	2585	2385	66	26	24	2466	2471	104	132	6	34	2268	14	162	-7,0	104	1112
4070.20.35.0-0.2690.00	2820	2432	138	2775	2580	72	26	24	2656	2661	104	132	6	34	2448	16	153	-8,0	104	1225

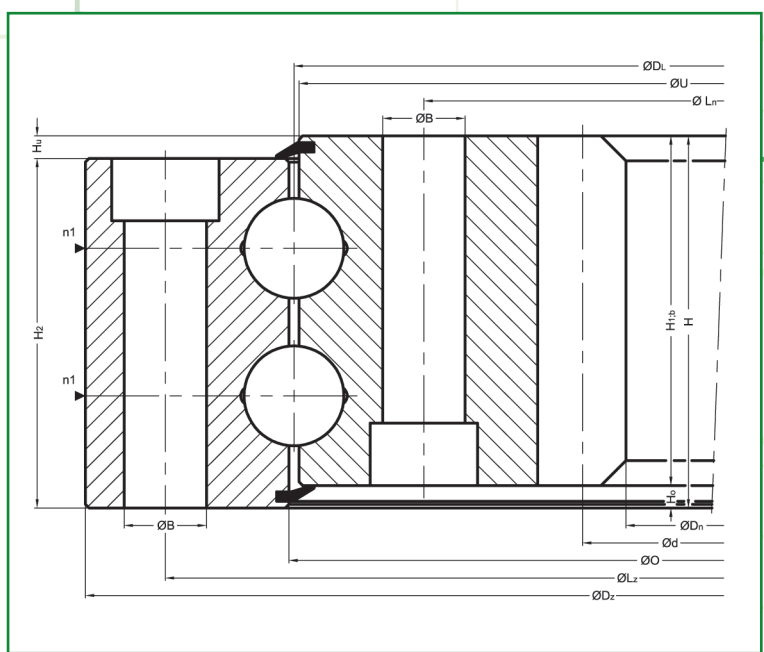
Drawing Nr.	Dz	Dn	H	Lz	Ln	n	B	M	O	U	H1	H2	Hu	Ho	d	m	z	x.m	b	T
	(mm)	(mm)	(mm)	(mm)	(mm)	(mm)	(mm)	(mm)	(mm)	(mm)	(mm)	(mm)	(mm)	(mm)	(mm)	(mm)	(mm)	(mm)	(mm)	(kg)
4072.20.40.0-0.2199.00	2350	1920	156	2295	2065	52	33	30	2168	2164	117	150	6	39	1936	16	121	-8,0	117	1238
4074.20.40.0-0.2622.00	2770	2336	156	2715	2485	60	33	30	2590	2587	117	150	6	39	2352	16	147	-8,0	117	1495
4076.20.40.0-0.2950.00	3100	2646	156	3045	2815	60	33	30	2918	2915	117	150	6	39	2664	18	148	-9,0	117	1764
4078.20.40.0-0.3300.00	3450	3006	156	3395	3165	66	33	30	3268	3265	117	150	6	39	3024	18	168	-9,0	117	1935

Drawing Nr.	Dz	Dn	H	Lz	Ln	N	B	M	O	U	H1	H2	Hu	Ho	d	m	z	x.m	b	T
	(mm)	(mm)	(mm)	(mm)	(mm)	(mm)	(mm)	(mm)	(mm)	(mm)	(mm)	(mm)	(mm)	(mm)	(mm)	(mm)	(mm)	(mm)	(mm)	(kg)
4080.20.45.0-0.2940.00	3100	2656	175	3045	2800	66	33	30	2903	2900	132	168	7	43	2672	16	167	-8,0	132	1950
4088.20.45.0-0.3400.00	3560	3080	175	3505	3260	72	33	30	3363	3358	132	168	7	43	3100	20	155	-10,0	132	2435

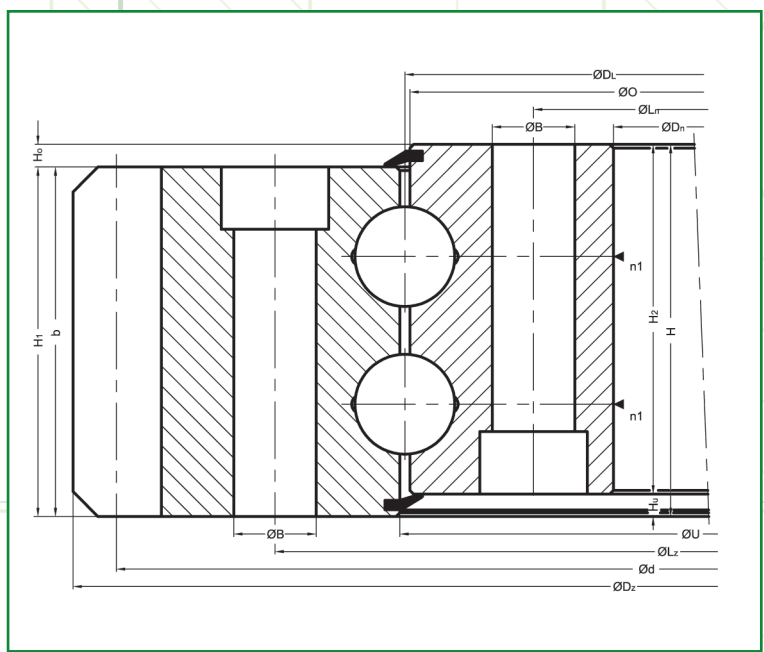
Drawing Nr.	Dz	Dn	H	Lz	Ln	N	B	M	O	U	H1	H2	Hu	Ho	d	m	z	x.m	b	T
	(mm)	(mm)	(mm)	(mm)	(mm)	(mm)	(mm)	(mm)	(mm)	(mm)	(mm)	(mm)	(mm)	(mm)	(mm)	(mm)	(mm)	(mm)	(mm)	(kg)
4082.20.50.0-0.2559.00	2725	2250	185	2670	2410	60	33	30	2522	2524	138	178	7	47	2268	18	126	-9,0	138	1892
4084.20.50.0-0.3520.00	3685	3200	185	3630	3370	78	33	30	3482	3485	138	178	7	47	3220	20	161	-10,0	138	2657
4086.20.50.0-0.3739.00	3905	3420	185	3850	3590	84	33	30	3701	3704	138	178	7	47	3440	20	172	-10,0	138	2823

► grease nipple (according to customer request) ► filler plug

M MODEL 4000

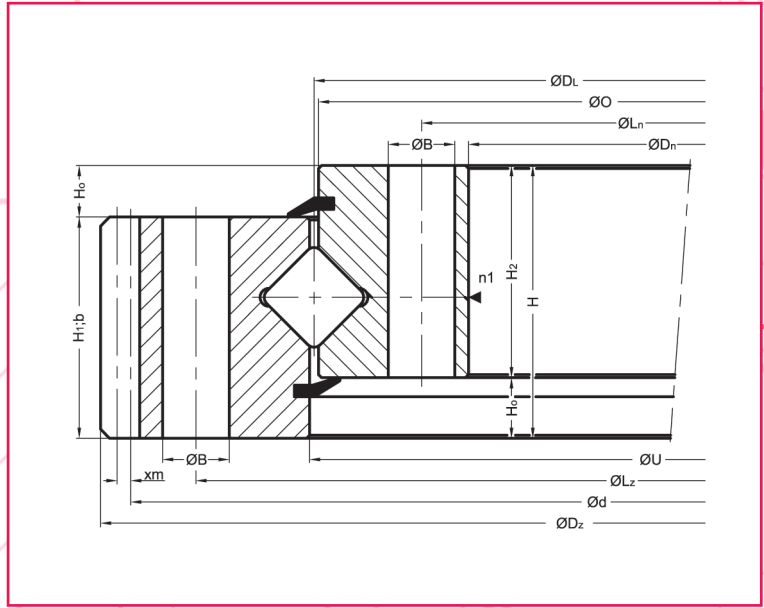


Drawing Nr.	Dz	Dn	H	Lz	Ln	n	B	M	O	U	H1	H2	Hu	Ho	d	m	z	x.m	b	T
	(mm)	(mm)	(mm)	(mm)	(mm)	(mm)	(mm)	(mm)	(mm)	(mm)	(mm)	(mm)	(mm)	(mm)	(mm)	(mm)	(mm)	(mm)	(mm)	(kg)
4802.20.22.0-0.0625.00	705	504	92	675	575	32	18	16	627	623	83	83	9	9	520	8	65	0	83	95
4804.20.22.0-0.0897.00	973	786	97	944	850	36	18	16	899	895	88	88	9	9	800	8	100	0	88	141
4806.20.22.0-0.1087.00	1172	962	97	1134	1040	36	18	16	1089	1085	88	88	9	9	980	10	98	0	88	193
4808.20.25.0-0.1100.00	1200	963,5	110	1160	1040	36	22	20	1102	1098	96	96	14	14	980	10	98	0	96	239
4810.20.30.0-0.1220.00	1345	1061,6	108	1290	1150	40	22	20	1222	1218	98	98	10	10	1080	10	108	0	98	331
4812.20.30.0-0.1347.00	1470	1183	108	1425	1270	40	22	22	1350	1344	98	98	10	10	1200	10	120	0	98	371
4814.20.30.0-0.1385.00	1530	1186	144	1480	1290	48	26	24	1388	1382	134	134	10	10	1200	10	120	0	134	612
4816.20.30.0-0.1615.00	1750	1418,4	120	1705	1525	40	26	24	1618	1612	110	105	10	15	1200	12	120	0	110	572
4818.20.30.0-0.2003.00	2178	1776	144	2108	1898	72	30	27	2005	2000	134	134	10	10	1800	12	150	0	134	1062



Drawing Nr.	Dz	Dn	H	Lz	Ln	n	B	M	O	U	H1	H2	Hu	Ho	d	m	z	x.m	b	T
	(mm)	(mm)	(mm)	(mm)	(mm)	(mm)	(mm)	(mm)	(mm)	(mm)	(mm)	(mm)	(mm)	(mm)	(mm)	(mm)	(mm)	(mm)	(mm)	(kg)
4850.30.25.0-0.0383.00	504	300	92	436	330	16	18	16	381	384	83	83	9	9	488	8	61	0	83	64
4852.30.22.0-0.0475.00	595	382	98	540	410	24	18	16	473	477	88	88	10	10	585	5	117	0	88	85
4854.30.25.0-0.0574.00	712	470	98	640	508	24	18	16	572	576	88	88	10	10	696	8	87	0	88	123
4856.30.20.0-0.0753.00	864	678	92	800	706	36	18	16	751	755	83	83	9	9	852	6	142	0	83	114
4858.30.30.0-0.0823.00	979	718	102	893	753	36	22	20	821	825	92	92	10	10	940	10	94	0	92	197
4860.30.20.0-0.0968.00	1080	893	92	1015	922	30	18	16	966	970	83	83	9	9	1064	8	133	0	83	148
4862.30.25.0-0.1074.00	1200	976	98	1135	1012	36	20	18	1072	1076	88	88	10	10	1184	8	148	0	88	210
4864.30.30.0-0.1117.00	1289,5	985	108	1198	1035	40	22	20	1114	1120	98	98	10	10	1250	10	125	0	98	332
4866.30.30.0-0.1213.00	1380	1095	108	1290	1135	48	24	22	1210	1216	98	98	10	10	1360	10	136	0	98	325
4868.30.40.0-0.1390.00	1634	1208	148	1500	1280	48	33	30	1387	1393	138	134	10	14	1582	14	113	0	138	797

M MODEL 5000



Drawing Nr.	Dz	Dn	H	Lz	Ln	n	B	M	O	U	H1	H2	Hu	Ho	d	m	z	x.m	b	T
	(mm)	(mm)	(mm)	(mm)	(mm)		(mm)	(mm)	(mm)	(mm)	(mm)	(mm)	(mm)	(mm)	(mm)	(mm)	(mm)	(mm)	(mm)	(kg)
5000.30.16.0-1.0400.00	495,5	325	55	448	352	16	13,5	12	398	402	46	46	9	9	484	4	121	+2,0	46	33
5002.30.16.0-1.0450.00	554	369	55	500	400	16	15,5	14	448	452	46	46	9	9	540	5	108	+2,5	46	41
5004.30.16.0-1.0560.00	664	479	55	610	510	20	15,5	14	558	562	46	46	9	9	650	5	130	+2,5	46	50
5006.30.16.0-1.0630.00	742,8	543	55	682	578	20	17,5	16	628	632	46	46	9	9	726	6	121	+3,0	46	61

Drawing Nr.	Dz	Dn	H	Lz	Ln	n	B	M	O	U	H1	H2	Hu	Ho	d	m	z	x.m	b	T
	(mm)	(mm)	(mm)	(mm)	(mm)		(mm)	(mm)	(mm)	(mm)	(mm)	(mm)	(mm)	(mm)	(mm)	(mm)	(mm)	(mm)	(mm)	(kg)
5016.30.20.0-1.0450.00	562,8	364	62	505	395	16	15,5	14	448	452	53	53	9	9	546	6	91	+3,0	53	49
5018.30.20.0-1.0560.00	676,8	474	62	615	505	20	15,5	14	558	562	53	53	9	9	660	6	110	+3,0	53	62
5020.30.20.0-1.0630.00	758,4	538	62	687	573	20	17,5	16	628	632	53	53	9	9	736	8	92	+4,0	53	76
5022.30.20.0-1.0710.00	838,4	618	62	767	653	24	17,5	16	708	712	53	53	9	9	816	8	102	+4,0	53	85

Drawing Nr.	Dz	Dn	H	Lz	Ln	n	B	M	O	U	H1	H2	Hu	Ho	d	m	z	x.m	b	T
	(mm)	(mm)	(mm)	(mm)	(mm)		(mm)	(mm)	(mm)	(mm)	(mm)	(mm)	(mm)	(mm)	(mm)	(mm)	(mm)	(mm)	(mm)	(kg)
5032.30.25.0-1.0764.00	892,8	662	73	830	698	24	17,5	16	762	766	64	64	9	9	876	6	146	+3,0	64	116
5034.30.25.0-1.0886.00	1030,4	784	73	952	820	30	17,5	16	884	888	64	64	9	9	1008	8	126	+4,0	64	144
5036.30.25.0-1.0980.00	1118,4	878	73	1046	914	30	17,5	16	978	982	64	64	9	9	1096	8	137	+4,0	64	155
5038.30.25.0-1.1077.00	1228	975	73	1143	1011	36	17,5	16	1075	1079	64	64	9	9	1200	10	120	+5,0	64	178

Drawing Nr.	Dz	Dn	H	Lz	Ln	n	B	M	O	U	H1	H2	Hu	Ho	d	m	z	x.m	b	T
	(mm)	(mm)	(mm)	(mm)	(mm)		(mm)	(mm)	(mm)	(mm)	(mm)	(mm)	(mm)	(mm)	(mm)	(mm)	(mm)	(mm)	(mm)	(kg)
5048.30.25.0-1.1120.00	1278	1008	73	1188	1052	36	22	20	1118	1122	64	64	9	9	1250	10	125	+5,0	64	195
5050.30.25.0-1.1180.00	1338	1068	73	1248	1112	36	22	20	1178	1182	64	64	9	9	1310	10	131	+5,0	64	206
5052.30.25.0-1.1250.00	1408	1138	73	1318	1182	40	22	20	1248	1252	64	64	9	9	1380	10	138	+5,0	64	216
5054.30.25.0-1.1320.00	1497,6	1208	73	1388	1252	42	22	20	1318	1322	64	64	9	9	1464	12	122	+6,0	64	247

Drawing Nr.	Dz	Dn	H	Lz	Ln	n	B	M	O	U	H1	H2	Hu	Ho	d	m	z	x.m	b	T
	(mm)	(mm)	(mm)	(mm)	(mm)		(mm)	(mm)	(mm)	(mm)	(mm)	(mm)	(mm)	(mm)	(mm)	(mm)	(mm)	(mm)	(mm)	(kg)
5064.30.28.0-1.1400.00	1593,6	1266	80	1482	1318	36	26	24	1398	1402	71	71	9	9	1560	12	130	+6,0	71	332
5066.30.28.0-1.1500.00	1689,6	1366	80	1582	1418	40	26	24	1498	1502	71	71	9	9	1656	12	138	+6,0	71	349
5068.30.28.0-1.1600.00	1803,2	1466	80	1682	1518	40	26	24	1598	1602	71	71	9	9	1764	14	126	+7,0	71	388
5070.30.28.0-1.1700.00	1915,2	1566	80	1782	1618	44	26	24	1698	1702	71	71	9	9	1876	14	134	+7,0	71	431

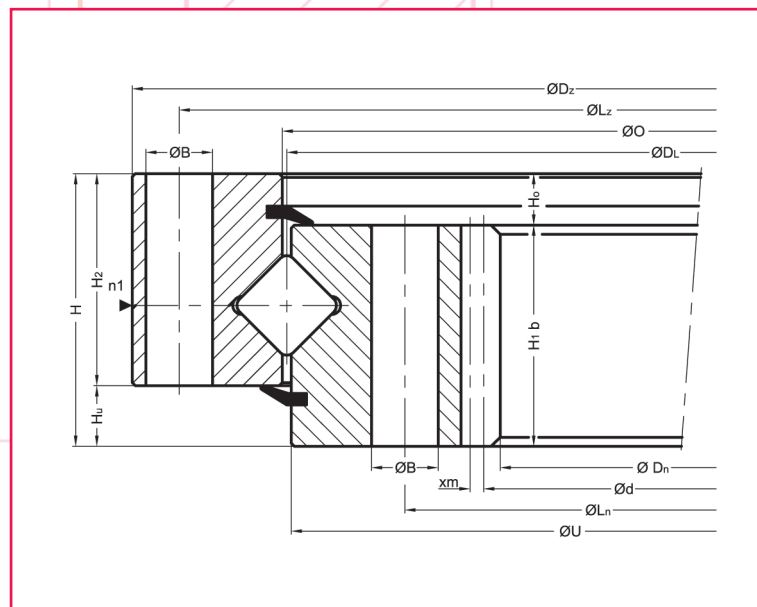
Drawing Nr.	Dz	Dn	H	Lz	Ln	n	B	M	O	U	H1	H2	Hu	Ho	d	m	z	x.m	b	T
	(mm)	(mm)	(mm)	(mm)	(mm)		(mm)	(mm)	(mm)	(mm)	(mm)	(mm)	(mm)	(mm)	(mm)	(mm)	(mm)	(mm)	(mm)	(kg)
5080.30.36.0-1.1700.00	1943,2	1529	100	1805	1595	32	33	30	1698	1702	90	90	10	10	1904	14	136	+7,0	90	653
5082.30.36.0-1.1800.00	2041,2	1629	100	1905	1695	36	33	30	1798	1802	90	90	10	10	2002	14	143	+7,0	90	685
5084.30.36.0-1.1900.00	2139,2	1729	100	2005	1795	36	33	30	1898	1902	90	90	10	10	2100	14	150	+7,0	90	721
5086.30.36.0-1.2000.00	2237,2	1829	100	2105	1895	40	33	30	1998	2002	90	90	10	10	2198	14	157	+7,0	90	749

Drawing Nr.	Dz	Dn	H	Lz	Ln	n	B	M	O	U	H1	H2	Hu	Ho	d	m	z	x.m	b	T
	(mm)	(mm)	(mm)	(mm)	(mm)		(mm)	(mm)	(mm)	(mm)	(mm)	(mm)	(mm)	(mm)	(mm)	(mm)	(mm)	(mm)	(mm)	(kg)
5096.30.40.0-1.2000.00	2252,8	1824	108	2110	1890	42	33	30	1997	2003	98	98	10	10	2208	16	138	+8,0	98	848
5098.30.40.0-1.2128.00	2380,8	1952	108	2238	2018	48	33	30	2125	2131	98	98	10	10	2336	16	146	+8,0	98	896
5100.30.40.0-1.2240.00	2492,8	2064	108	2350	2130	48	33	30	2237	2243	98	98	10	10	2448	16	153	+8,0	98	946
5102.30.40.0-1.2368.00	2620,8	2192	108	2478	2258	56	33	30	2365	2371	98	98	10	10	2576	16	161	+8,0	98	993

Drawing Nr.	Dz	Dn	H	Lz	Ln	n	B	M	O	U	H1	H2	Hu	Ho	d	m	z	x.m	b	T
	(mm)	(mm)	(mm)	(mm)	(mm)		(mm)	(mm)	(mm)	(mm)	(mm)	(mm)	(mm)	(mm)	(mm)	(mm)	(mm)	(mm)	(mm)	(kg)
5112.30.45.0-1.2240.00	2516,4	2057	119	2357	2123	48	33	30	2237	2243	109	109	10	10	2466	18	137	+9,0	109	1122
5114.30.45.0-1.2366.00	2642,4	2183	119	2483	2249	52	33	30	2363	2369	109	109	10	10	2592	18	144	+9,0	109	1182
5116.30.45.0-1.2510.00	2786,4	2327	119	2627	2393	56	33	30	2507	2513	109	109	10	10	2736	18	152	+9,0	109	1258
5118.30.45.0-1.2654.00	2930,4	2471	119	2771	2537	60	33	30	2651	2657	109	109	10	10	2880	18	160	+9,0	109	1329

Drawing Nr.	Dz	Dn	H	Lz	Ln	n	B	M	O	U	H1	H2	Hu	Ho	d	m	z	x.m	b	T
	(mm)	(mm)	(mm)	(mm)	(mm)		(mm)	(mm)	(mm)	(mm)	(mm)	(mm)	(mm)	(mm)	(mm)	(mm)	(mm)	(mm)	(mm)	(kg)
5128.30.50.0-1.2500.00	2796	2309	130	2625	2375	60	33	30	2497	2503	120	120	10	10	2740	20	137	+10,0	120	1453
5130.30.50.0-1.2660.00	2956	2469	130	2785	2535	64	33	30	2657	2663	120	120	10	10	2900	20	145	+10,0	120	1544
5132.30.50.0-1.2800.00	3096	2609	130	2925	2675	72	33	30	2797	2803	120	120	10	10	3040	20	152	+10,0	120	1616
5134.30.50.0-1.3000.00	3296	2809	130	3125	2875	76	33	30	2997	3003	120	120	10	10	3240	20	162	+10,0	120	1733

MODEL 5000



Drawing Nr.	Dz (mm)	Dn (mm)	H (mm)	Lz (mm)	Ln (mm)	n	B (mm)	M (mm)	O (mm)	U (mm)	H1 (mm)	H2 (mm)	Hu (mm)	Ho (mm)	d (mm)	m (mm)	z (mm)	x.m (mm)	b (mm)	T (kg)
5056.20.25.0-1.1120.00	1232	960	73	1188	1052	36	22	20	1122	1118	64	64	9	9	970	10	97	-5,0	64	192
5058.20.25.0-1.1180.00	1292	1020	73	1248	1112	36	22	20	1182	1178	64	64	9	9	1030	10	103	-5,0	64	202
5060.20.25.0-1.1250.00	1362	1090	73	1318	1182	40	22	20	1252	1248	64	64	9	9	1100	10	110	-5,0	64	213
5062.20.25.0-1.1320.00	1432	1140	73	1388	1252	40	22	20	1322	1318	64	64	9	9	1152	12	96	-6,0	64	240

Drawing Nr.	Dz (mm)	Dn (mm)	H (mm)	Lz (mm)	Ln (mm)	n	B (mm)	M (mm)	O (mm)	U (mm)	H1 (mm)	H2 (mm)	Hu (mm)	Ho (mm)	d (mm)	m (mm)	z (mm)	x.m (mm)	b (mm)	T (kg)
5072.20.28.0-1.1400.00	1534	1200	80	1482	1318	36	26	24	1402	1398	71	71	9	9	1212	12	101	-6,0	71	330
5074.20.28.0-1.1500.00	1634	1308	80	1582	1418	40	26	24	1502	1498	71	71	9	9	1320	12	110	-6,0	71	343
5076.20.28.0-1.1600.00	1734	1386	80	1682	1518	40	26	24	1602	1598	71	71	9	9	1400	14	100	-7,0	71	391
5078.20.28.0-1.1700.00	1834	1498	80	1782	1618	44	26	24	1702	1698	71	71	9	9	1512	14	108	-7,0	71	398

Drawing Nr.	Dz (mm)	Dn (mm)	H (mm)	Lz (mm)	Ln (mm)	n	B (mm)	M (mm)	O (mm)	U (mm)	H1 (mm)	H2 (mm)	Hu (mm)	Ho (mm)	d (mm)	m (mm)	z (mm)	x.m (mm)	b (mm)	T (kg)
5088.20.36.0-1.1700.00	1871	1456	100	1805	1595	32	33	30	1702	1698	90	90	10	10	1470	14	105	-7,0	90	636
5090.20.36.0-1.1800.00	1971	1554	100	1905	1695	36	33	30	1802	1798	90	90	10	10	1568	14	112	-7,0	90	675
5092.20.36.0-1.1900.00	2071	1652	100	2005	1795	36	33	30	1902	1898	90	90	10	10	1666	14	119	-7,0	90	720
5094.20.36.0-1.2000.00	2171	1764	100	2105	1895	40	33	30	2002	1998	90	90	10	10	1778	14	127	-7,0	90	731

Drawing Nr.	Dz (mm)	Dn (mm)	H (mm)	Lz (mm)	Ln (mm)	n	B (mm)	M (mm)	O (mm)	U (mm)	H1 (mm)	H2 (mm)	Hu (mm)	Ho (mm)	d (mm)	m (mm)	z (mm)	x.m (mm)	b (mm)	T (kg)
5008.20.16.0-1.0400.00	475	304	55	448	352	16	13,5	12	402	398	46	46	9	9	308	4	77	-2,0	46	31
5010.20.16.0-1.0450.00	531	345	55	500	400	16	15,5	14	452	448	46	46	9	9	350	5	70	-2,5	46	40
5012.20.16.0-1.0560.00	641	455	55	610	510	20	15,5	14	562	558	46	46	9	9	460	5	92	-2,5	46	49
5014.20.16.0-1.0630.00	717	516	55	682	578	20	17,5	16	632	628	46	46	9	9	522	6	87	-3,0	46	59

Drawing Nr.	Dz (mm)	Dn (mm)	H (mm)	Lz (mm)	Ln (mm)	n	B (mm)	M (mm)	O (mm)	U (mm)	H1 (mm)	H2 (mm)	Hu (mm)	Ho (mm)	d (mm)	m (mm)	z (mm)	x.m (mm)	b (mm)	T (kg)
5104.20.40.0-1.2000.00	2176	1744	108	2110	1890	42	33	30	2003	1997	98	98	10	10	1760	16	110	-8,0	98	832
5106.20.40.0-1.2128.00	2304	1872	108	2238	2018	48	33	30	2113	2125	98	98	10	10	1888	16	118	-8,0	98	882
5108.20.40.0-1.2240.00	2416	1984	108	2350	2130	48	33	30	2243	2237	98	98	10	10	2000	16	125	-8,0	98	932
5110.20.40.0-1.2368.00	2544	2112	108	2478	2258	56	33	30	2371	2365	98	98	10	10	2128	16	133	-8,0	98	980

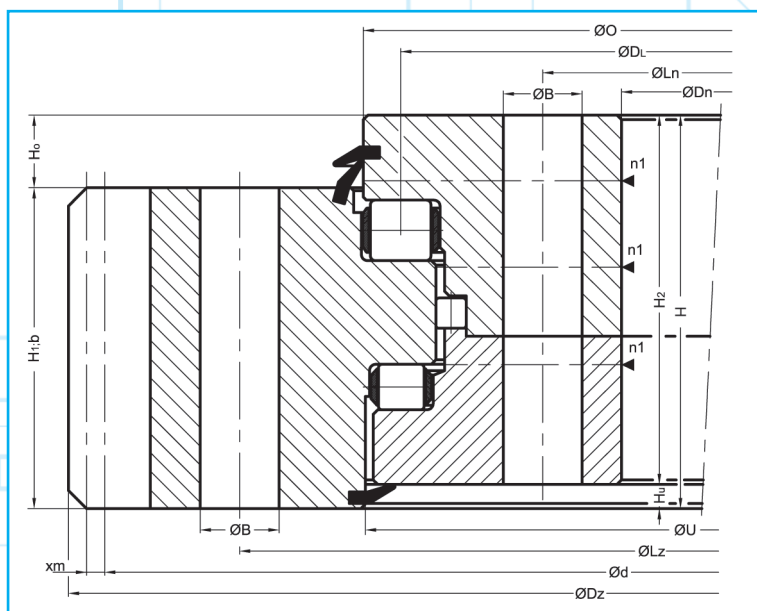
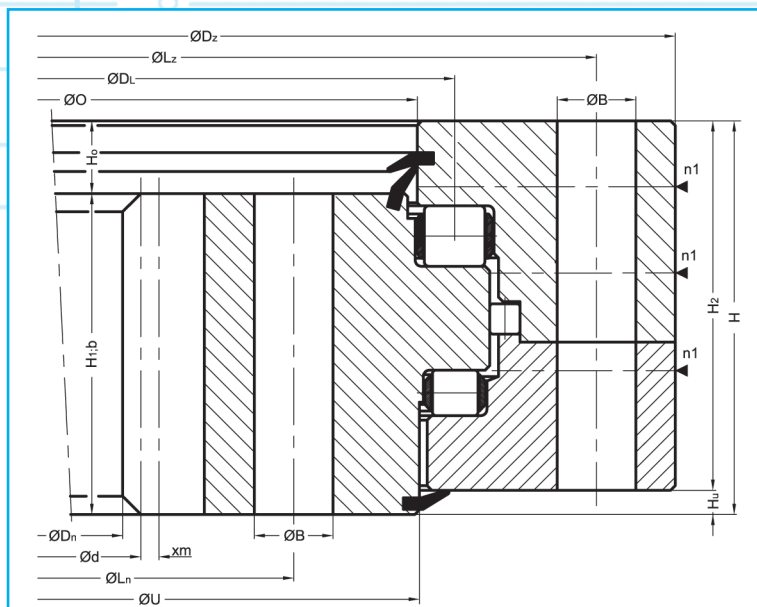
Drawing Nr.	Dz (mm)	Dn (mm)	H (mm)	Lz (mm)	Ln (mm)	n	B (mm)	M (mm)	O (mm)	U (mm)	H1 (mm)	H2 (mm)	Hu (mm)	Ho (mm)	d (mm)	m (mm)	z (mm)	x.m (mm)	b (mm)	T (kg)
5024.20.20.0-1.0450.00	536	336	62	505	395	16	15,5	14	452	448	53	53	9	9	342	6	57	-3,0	53	48
5026.20.20.0-1.0560.00	646	444	62	615	505	20	15,5	14	562	558	53	53	9	9	450	6	75	-3,0	53	60
5028.20.20.0-1.0630.00	722	496	62	687	573	20	17,5	16	632	628	53	53	9	9	504	8	63	-4,0	53	75
5030.20.20.0-1.0710.00	802	576	62	767	653	24	17,5	16	712	708	53	53	9	9	584	8	73	-4,0	53	84

Drawing Nr.	Dz (mm)	Dn (mm)	H (mm)	Lz (mm)	Ln (mm)	n	B (mm)	M (mm)	O (mm)	U (mm)	H1 (mm)	H2 (mm)	Hu (mm)	Ho (mm)	d (mm)	m (mm)	z (mm)	x.m (mm)	b (mm)	T (kg)
5120.20.45.0-1.2240.00	2423	1962	119	2357	2123	48	33	30	2243	2237	109	109	10	10	1980	18	110	-9,0	109	1100
5122.20.45.0-1.2366.00	2549	2088	119	2483	2249	52	33	30	2369	2363	109	109	10	10	2106	18	117	-9,0	109	1160
5124.20.45.0-1.2510.00	2693	2232	119	2627	2393	56	33	30	2513	2507	109	109	10	10	2250	18	125	-9,0	109	1231
5126.20.45.0-1.2645.00	2837	2376	119	2771	2537	60	33	30	2657	2651	109	109	10	10	2394	18	133	-9,0	109	1302

Drawing Nr.	Dz (mm)	Dn (mm)	H (mm)	Lz (mm)	Ln (mm)	n	B (mm)	M (mm)	O (mm)	U (mm)	H1 (mm)	H2 (mm)	Hu (mm)	Ho (mm)	d (mm)	m (mm)	z (mm)	x.m (mm)	b (mm)	T (kg)
5040.20.25.0-1.0764.00	866	636	73	830	698	24	17,5	16	766	762	64	64	9	9	642	6	107	-3,0	64	113
5042.20.25.0-1.0886.00	988	744	73	952	820	30	17,5	16	888	884	64	64	9	9	752	8	94	-4,0	64	138
5044.20.25.0-1.0980.00	1082	840	73	1046	914	30	17,5	16	982	978	64	64	9	9	848	8	106	-4,0	64	152
5046.20.25.0-1.1077.00	1179	920	73	1143	1011	36	17,5	16	1079	1075	64	64	9	9	930	10	93	-5,0	64	177

Drawing Nr.	Dz (mm)	Dn (mm)	H (mm)	Lz (mm)	Ln (mm)	n	B (mm)	M (mm)	O (mm)	U (mm)	H1 (mm)	H2 (mm)	Hu (mm)	Ho (mm)	d (mm)	m (mm)	z (mm)	x.m (mm)	b (mm)	T (kg)
5136.20.50.0-1.2500.00	2691	2200	130	2625	2375	60	33	30	2503	2497	120	120	10	10	2220	20	111	-10,0	120	1423
5138.20.50.0-1.2660.00	2851	2360	130	2785	2535	64	33	30	2663	2657	120	120	10	10	2380	20	119	-10,0	120	1515
5140.20.50.0-1.2800.00	2691	2500	130	2925	2675	72	33	30	2803	2797	120	120	10	10	2520	20	126	-10,0	120	1588
5142.20.50.0-1.3000.00	3191	2700	130	3125	2875	76	33	30	3003	2997	120	120	10	10	2720	20	136	-10,0	120	1706

MODEL 7000



Drawing Nr.	Dz	Dn	H	Lz	Ln	n	B	M	O	U	H1	H2	Hu	Ho	d	m	z	x.m	b	T
	(mm)	(mm)	(mm)	(mm)	(mm)		(mm)	(mm)	(mm)	(mm)	(mm)	(mm)	(mm)	(mm)	(mm)	(mm)	(mm)	(mm)	(mm)	(kg)
7010.20.20.0-1.1250.00	1397	1032	132	1345	1145	36	26	24	1219	1218	106	123	9	26	1044	12	87	-6	106	539
7012.20.20.0-1.1400.00	1547	1162	132	1495	1295	36	26	24	1369	1368	106	123	9	26	1176	14	84	-7	106	630
7014.20.20.0-1.1600.00	1747	1372	132	1695	1495	40	26	24	1569	1568	106	123	9	26	1386	14	99	-7	106	705
7016.20.20.0-1.1800.00	1947	1552	132	1895	1695	46	26	24	1769	1768	106	123	9	26	1568	16	98	-8	106	829
7018.20.20.0-1.2000.00	2147	1760	132	2095	1895	54	26	24	1969	1968	106	123	9	26	1776	16	111	-8	106	902

Drawing Nr.	Dz	Dn	H	Lz	Ln	n	B	M	O	U	H1	H2	Hu	Ho	d	m	z	x.m	b	T
	(mm)	(mm)	(mm)	(mm)	(mm)		(mm)	(mm)	(mm)	(mm)	(mm)	(mm)	(mm)	(mm)	(mm)	(mm)	(mm)	(mm)	(mm)	(kg)
7030.20.25.0-1.1800.00	1981	1520	147	1915	1675	36	33	30	1763	1774	117	138	9	30	1536	16	96	-8	117	1101
7032.20.25.0-1.2000.00	2181	1728	147	2115	1875	44	33	30	1963	1974	117	138	9	30	1744	16	109	-8	117	1202
7034.20.25.0-1.2240.00	2421	1944	147	2355	2115	48	33	30	2203	2214	117	138	9	30	1962	18	109	-9	117	1406
7036.20.25.0-1.2500.00	2681	2214	147	2615	2375	54	33	30	2463	2474	117	138	9	30	2232	18	124	-9	117	1545
7038.20.25.0-1.2800.00	2981	2500	147	2915	2675	60	33	30	2763	2774	117	138	9	30	2520	20	126	-10	117	1767

Drawing Nr.	Dz	Dn	H	Lz	Ln	n	B	M	O	U	H1	H2	Hu	Ho	d	m	z	x.m	b	T
	(mm)	(mm)	(mm)	(mm)	(mm)		(mm)	(mm)	(mm)	(mm)	(mm)	(mm)	(mm)	(mm)	(mm)	(mm)	(mm)	(mm)	(mm)	(kg)
7050.20.32.0-1.2240.00	2458	1908	181	2380	2085	40	39	36	2199	2210	139	172	9	42	1926	18	107	-9	139	2010
7052.20.32.0-1.2500.00	2718	2178	181	2640	2345	44	39	36	2459	2470	139	172	9	42	2196	18	122	-9	139	2210
7054.20.32.0-1.2800.00	3018	2460	181	2940	2645	48	39	36	2759	2770	139	172	9	42	2480	20	124	-10	139	2542
7056.20.32.0-1.3150.00	3368	2820	181	3290	2995	56	39	36	3109	3120	139	172	9	42	2840	20	142	-10	139	2807
7058.20.40.0-1.2800.00	3038	2460	220	2960	2635	48	39	36	2750	2763	170	210	10	50	2480	20	124	-40	170	3213
7060.20.40.0-1.3150.00	3388	2794	220	3310	2985	56	39	36	3100	3113	170	210	10	50	2816	22	128	-11	170	3683

Drawing Nr.	Dz	Dn	H	Lz	Ln	n	B	M	O	U	H1	H2	Hu	Ho	d	m	z	x.m	b	T
	(mm)	(mm)	(mm)	(mm)	(mm)		(mm)	(mm)	(mm)	(mm)	(mm)	(mm)	(mm)	(mm)	(mm)	(mm)	(mm)	(mm)	(mm)	(kg)
7000.30.20.0-1.1250.00	1461,6	1103	132	1355	1155	36	26	24	1280	1282	106	123	9	26	1428	12	119	+6	106	542
7002.30.20.0-1.1400.00	1635,2	1253	132	1505	1305	36	26	24	1430	1432	106	123	9	26	1596	14	114	+7	106	646
7004.30.20.0-1.1600.00	1831,2	1453	132	1705	1505	40	26	24	1630	1632	106	123	9	26	1792	14	128	+7	106	731
7006.30.20.0-1.1800.00	2044,8	1653	132	1905	1705	46	26	24	1830	1832	106	123	9	26	2000	16	125	+8	106	844
7008.30.20.0-1.2000.00	2236,8	1853	132	2105	1905	54	26	24	2030	2032	106	123	9	26	2192	16	137	+8	106	912

Drawing Nr.	Dz	Dn	H	Lz	Ln	n	B	M	O	U	H1	H2	Hu	Ho	d	m	z	x.m	b	T
	(mm)	(mm)	(mm)	(mm)	(mm)		(mm)	(mm)	(mm)	(mm)	(mm)	(mm)	(mm)	(mm)	(mm)	(mm)	(mm)	(mm)	(mm)	(kg)
7020.30.25.0-1.1800.00	2076,8	1619	147	1925	1685	36	33	30	1836	1826	117	138	9	30	2032	16	127	+8	117	1126
7022.30.25.0-1.2000.00	2268,8	1819	147	2125	1885	44	33	30	2036	2026	117	138	9	30	2224	16	139	+8	117	1216
7024.30.25.0-1.2240.00	2516,4	2059	147	2366	2125	48	33	30	2276	2266	117	138	9	30	2466	18	137	+9	117	1378
7026.30.25.0-1.2500.00	2786,4	2319	147	2625	2385	54	33	30	2536	2526	117	138	9	30	2736	18	152	+9	117	1567
7028.30.25.0-1.2800.00	3096	2619	147	2925	2685	60	33	30	2836	2826	117	138	9	30	3040	20	152	+10	117	1785

Drawing Nr.	Dz	Dn	H	Lz	Ln	n	B	M	O	U	H1	H2	Hu	Ho	d	m	z	x.m	b	T
	(mm)	(mm)	(mm)	(mm)	(mm)		(mm)	(mm)	(mm)	(mm)	(mm)	(mm)	(mm)	(mm)	(mm)	(mm)	(mm)	(mm)	(mm)	(kg)
7040.30.32.0-1.2240.00	2552,4	2022	181	2395	2100	40	39	36	2281	2270	139	172	9	42	2502	18	139	+9	139	1975
7042.30.32.0-1.2500.00	2822,4	2282	181	2655	2360	44	39	36	2541	2530	139	172	9	42	2772	18	154	+9	139	2260
7044.30.32.0-1.2800.00	3136	2582	181	2955	2660	48	39	36	2841	2830	139	172	9	42	3080	20	154	+10	139	2576
7046.30.32.0-1.3150.00	3476	2932	181	3305	3010	56	39	36	3191	3180	139	172	9	42	3420	20	171	+10	139	2828
7048.30.40.0-1.2800.00	3136	2562	220	2965	2640	48	39	36	2850	2837	170	210	10	50	3080	20	154	+10	170	3267

►grease nipple (according to customer request) ►filler plug