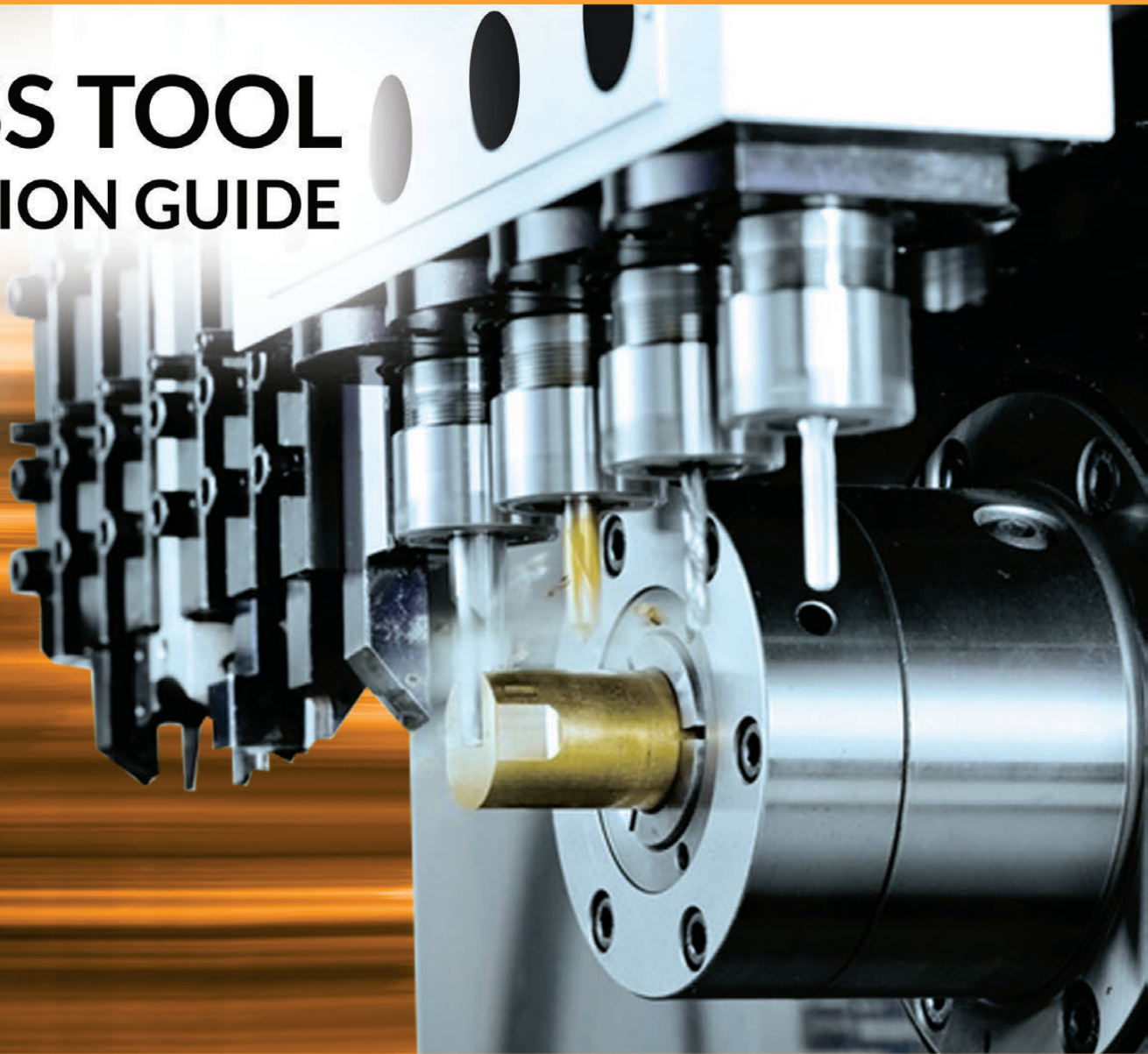


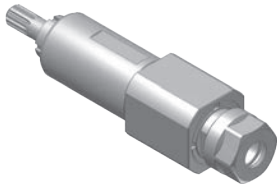
KOMA

SWISS TOOL SELECTION GUIDE



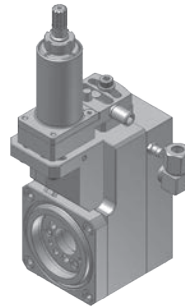
HANWHA SWISS TOOLING

XD20/XD26 TOOLING FOR GANG TOOL POST



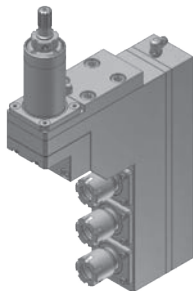
HWX246100
Cross drilling/milling unit

RATIO: 1:1
RPM(MAX): 8000
TOOL CLAMPING: ER16A



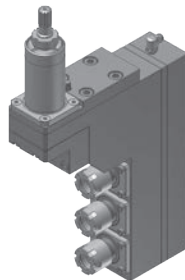
HWX260100
Thread whirling unit

RATIO: 1:1
RPM(MAX): 6000
THREAD(MAX): M12
HELIX ANGLE: $\pm 15^\circ$



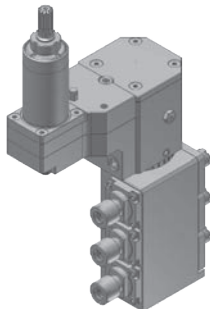
HWX446300
3 spindle drilling/milling unit

RATIO: 1:1
RPM(MAX): 6000
TOOL CLAMPING: ER16M



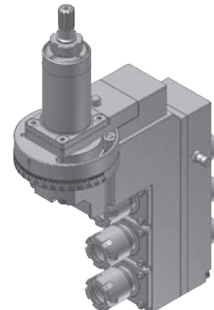
HWX546300
3 spindle drilling/milling unit

RATIO: 1:1
RPM(MAX): 6000
TOOL CLAMPING:
Front side: ER16M
Back side : ER11M



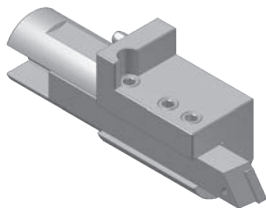
HWX591300
3 spindle drilling/milling unit

RATIO: 1:1
RPM(MAX): 8000
TOOL CLAMPING:
Front side: ER11M
Back side : ER8M
ANGLE ADJUSTMENT: $\pm 180^\circ$



HWX596300
3 spindle drilling/milling unit

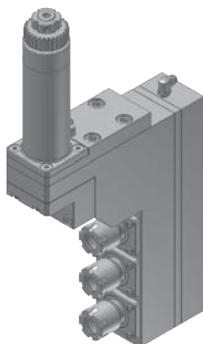
RATIO: 1:1
RPM(MAX): 8000
TOOL CLAMPING:
Front side: ER16M
Back side : ER11M
ANGLE ADJUSTMENT: $\pm 90^\circ$



HWX2012100
Turning tool holder

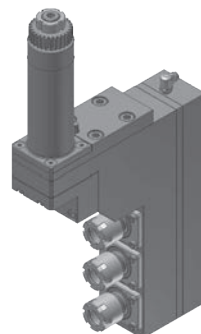
TOOL SHANK: $\varnothing 30\text{mm}$
BITE HOLDER SHANK: 12x12mm

XD32/XD35/XD38 TOOLING FOR GANG TOOL POST



HWX446300-1
3 spindle drilling/milling unit

RATIO: 1:1
RPM(MAX): 6000
TOOL CLAMPING: ER16M

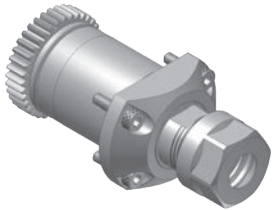


HWX546300-1
3 spindle drilling/milling unit

RATIO: 1:1
RPM(MAX): 6000
TOOL CLAMPING:
Front side: ER16M
Back side : ER11M

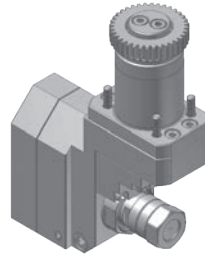
HANWHA SWISS TOOLING

XD20/XD26 TOOLING FOR BACK TOOL POST



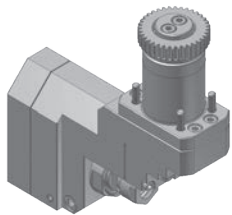
HWX746100
Drilling/milling unit

RATIO: 1:1
RPM(MAX): 8000
TOOL CLAMPING: ER16A



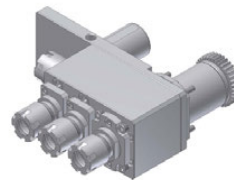
HWX730100
Slotting unit

RATIO: 1:0.55
RPM(MAX): 4000
SAW OD(MAX): Ø50mm
SAW ARBOR SHANK:
Ø5.0/6.0/8.0/10.0/12.7/13.0mm



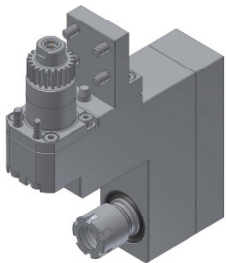
HWX731100-1
Slotting unit

RATIO: 1:0.55
RPM(MAX): 4000
TOOL CLAMPING: ER11A



HWX746400
Cross drilling/milling and
Face drilling/milling unit for
sub spindle

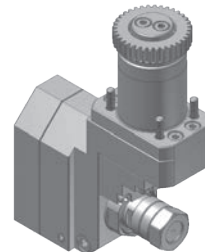
RATIO: 1:1
RPM(MAX): 6000
TOOL CLAMPING: ER16M



HWX866100
Cross drilling/milling unit

RATIO: 1:1
RPM(MAX): 6000
TOOL CLAMPING: ER16M

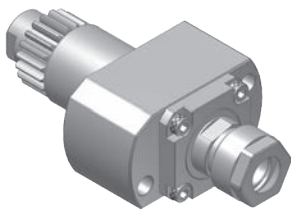
XD32H / XD38H TOOLING FOR BACK TOOL POST



HWX736100
Slotting unit

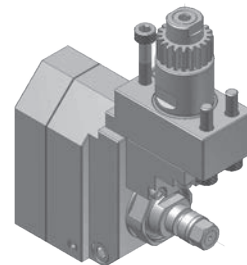
RATIO: 1:0.77
RPM(MAX): 4000
TOOL CLAMPING: ER-16A
CENTER ADJUSTMENT: ±1 mm

XD12H TOOLING FOR BACK TOOL POST



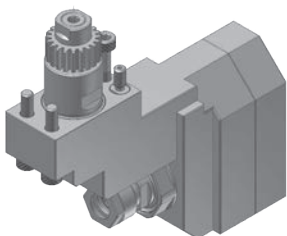
HWX741100
Drilling/milling unit

RATIO: 1:1
RPM(MAX): 6000
TOOL CLAMPING: ER11A



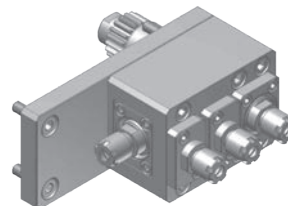
HWX731000
Slotting unit

RATIO: 1:0.55
RPM(MAX): 4000
SAW OD(MAX): Ø50
SAW ARBOR SHANK: Ø5.0/6.0/8.0/
12.7 mm



HWX731100
Slotting unit

RATIO: 1:0.55
RPM(MAX): 4000
TOOL CLAMPING: ER11A



HWX748400
Cross drilling/milling unit and
face drilling/milling unit

RATIO: 1:1
RPM(MAX): 8000
TOOL CLAMPING: ER8M

