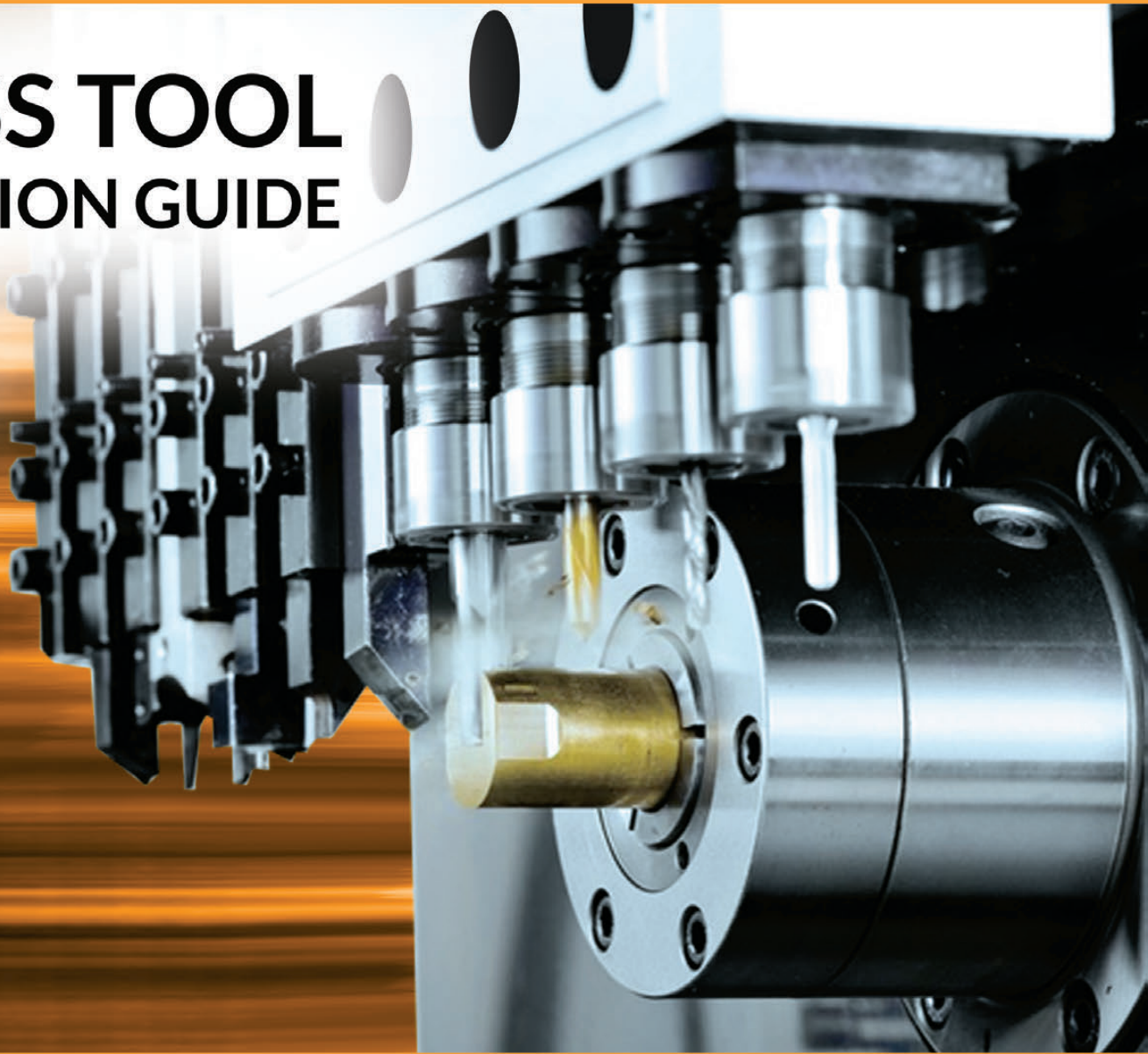


KOMA

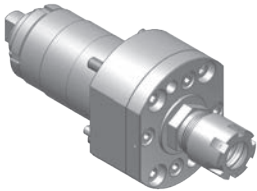
SWISS TOOL SELECTION GUIDE



TSUGAMI
Rem Sales, LLC

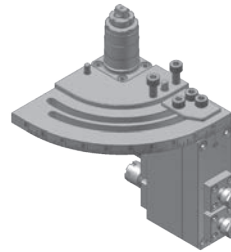
TSUGAMI SWISS TOOLING

S205/S206 TOOLING FOR GANG TOOL POST



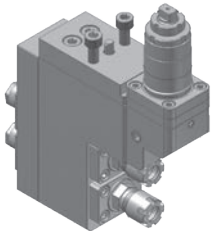
TSS161000
Cross drilling/milling unit

RATIO 1 : 1
RPM(MAX) 8000
TOOL CLAMPING ER16M



TSS562100
2 spindle drilling/milling unit

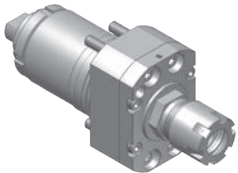
RATIO 1 : 1
RPM(MAX) 8000
TOOL CLAMPING
Front side : ER16M
Back side : ER11A
ANGLE ADJUSTMENT 0~90°



TSS562000
2 spindle drilling/milling unit

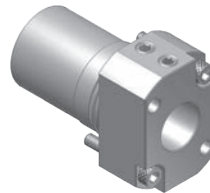
RATIO 1 : 1
RPM(MAX) 8000
TOOL CLAMPING
Front side : ER16M
Back side : ER11A

S205/S206 TOOLING FOR BACK TOOL POST



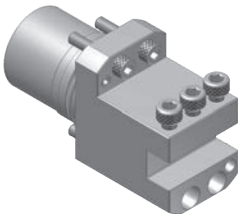
TSS761000
Drilling/milling unit

RATIO 1 : 1
RPM(MAX) 8000
TOOL CLAMPING ER16M



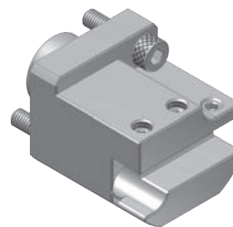
TSS601000
Tool adaptor

TOOL SHANK Ø35.0mm
SLEEVE SHANK Ø20.0mm



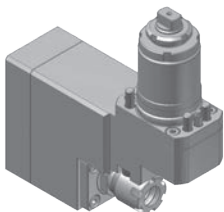
TSS620100
Turning tool holder

TOOL SHANK Ø35.0mm
BITE HOLDER SHANK
12x12mm



TSS620100-1
Turning tool holder

TOOL SHANK Ø20.0mm
BITE HOLDER SHANK 10x10mm



TSS861000
Slotting(Cross drilling/milling) unit

RATIO / 1 : 1
RPM(MAX) / 6000
TOOL CLAMPING / ER16M

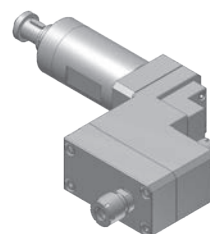
BO26V TOOLING FOR GANG TOOL POST

BO266/BO326 TOOLING FOR SUB SPINDLE



TSB866100
Cross drilling/milling unit

RATIO 1 : 1
RPM(MAX) 6000
TOOL CLAMPING ER16M
TSUGAMI ITEM NO. 3290-Y041

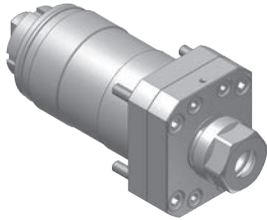


TSB511000
1 spindle drilling/milling unit

RATIO 1 : 1
RPM(MAX) 6000
TOOL CLAMPING ER16A

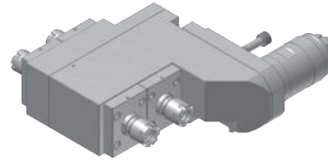
TSUGAMI SWISS TOOLING

BO385 TOOLING FOR GANG TOOL POST



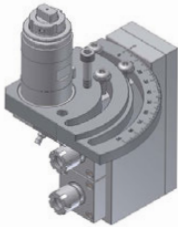
TSB246100
Cross drilling/milling unit

RATIO 1:1
RPM(MAX) 6000
TOOL CLAMPING ER16A
TSUGAMI ITEM NO. 3268-T051



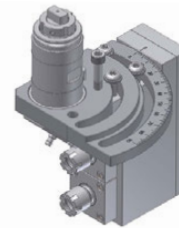
TSB546200
2 spindle drilling/milling unit

RATIO 1:1
RPM(MAX) 6000
TOOL CLAMPING ER16M
TSUGAMI ITEM NO. 3282-Y901



TSB496200
2 spindle drilling/milling unit

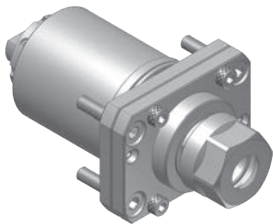
RATIO 1:1
RPM(MAX) 6000
TOOL CLAMPING ER16M
ANGLE ADJUSTMENT 0~90°



TSB596200
2 spindle drilling/milling unit

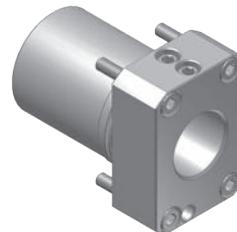
RATIO 1:1
RPM(MAX) 6000
TOOL CLAMPING ER16M
ANGLE ADJUSTMENT 0~90°
TSUGAMI ITEM NO. 3282-Y921

BO385 TOOLING FOR BACK TOOL POST



TSB746100
Drilling/milling unit

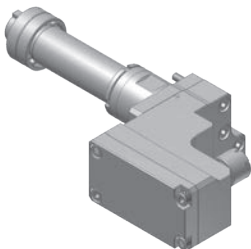
RATIO 1:1
RPM(MAX) 6000
TOOL CLAMPING ER16A
TSUGAMI ITEM NO. 3282-Y041



TSB640100
Tool adaptor

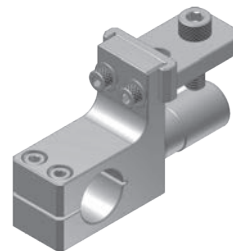
TOOL SHANK Ø42.0mm
SLEEVE SHANK Ø25.0mm
TSUGAMI ITEM NO. 3282-Y211

BO125/BO205 TOOLING FOR GANG TOOL POST



TSB411000
1 spindle drilling/milling unit

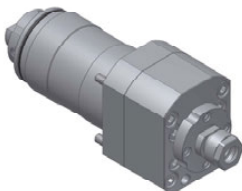
RATIO 1:1
RPM(MAX) 6000
TOOL CLAMPING ER16A



TSB601000
Air tool holder

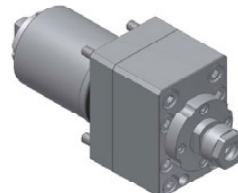
TOOL SHANK Ø20.0mm
AIR TOOL SHANK Ø22.8mm
AIR TOOL Straight spindle NR303

BO266 / BO326 / BO385 TOOLING



TSB241100
Cross drilling/milling unit

RATIO 1:2
RPM(MAX) 12,000
TOOL CLAMPING ER11A



TSB741100
Drilling/milling unit, sub

RATIO 1:2
RPM(MAX) 12,000
TOOL CLAMPING ER11A

Tel: 1.800.249.5662
Fax: 860.623.4132

info@komaprecision.com
www.komaprecision.com

20 Thompson Road
East Windsor, CT 06088

