

# KOMMA







For over thirty years Koma Precision has been the foremost source for the finest the world has to offer in machine tool Productivity Innovation.

With over 30,000 rotary table installations, KOMA is the largest distributor of Tsudakoma NC rotary tables and indexers in the world. With over 12,000 angle heads and live tools installed, KOMA is the world's largest supplier for Alberti - the originator and the foremost innovator of productivity tooling.

Our 25,000 sq. ft. facility features a completely equipped machine shop, state of the art inspection equipment, a product demonstration showroom, and a multi-million dollar new product and spare parts inventory.



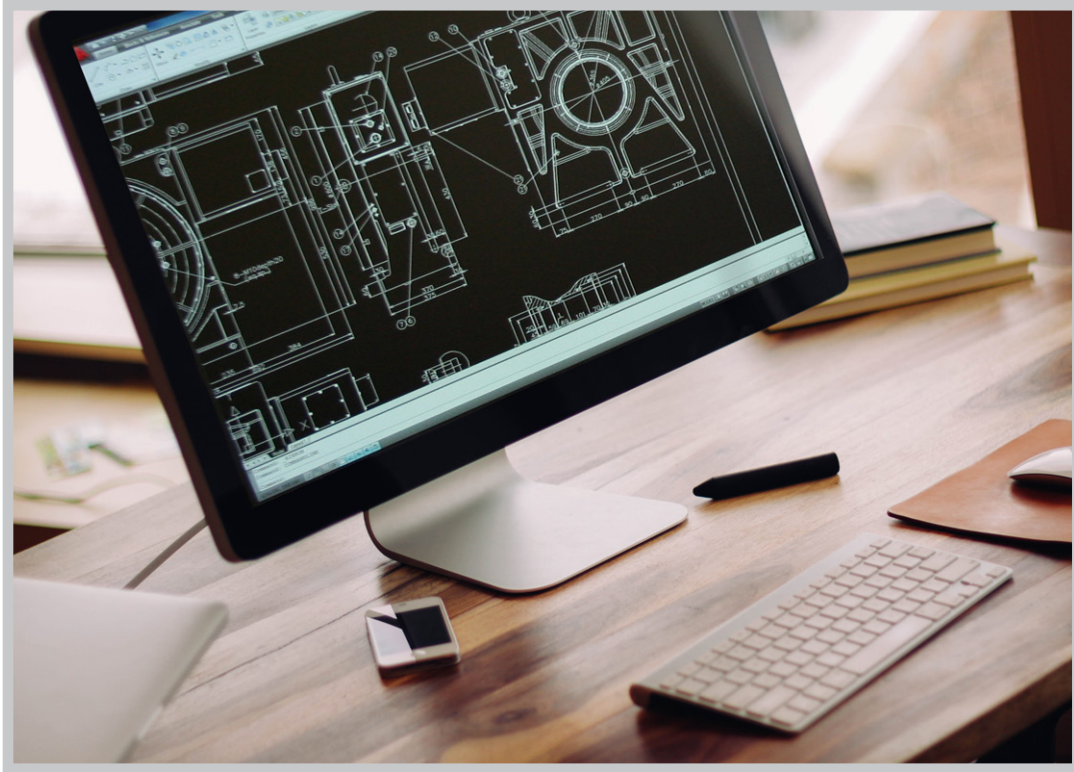


# ROTARY TABLE INTEGRATION

Koma now offers rotary table integration with cable management and onsite installation. We can add additional axes to your VMC or HMC. Cable Management system allows the table to remain connected to the machine control throughout a pallet change. Add a hydraulic power system to your HMC (with/without rotary table) which can be used to automatically actuate fixturing/workholding. KOMA integration division assures the upmost integrity of our installations using the highest quality components along with our custom engineering designs.

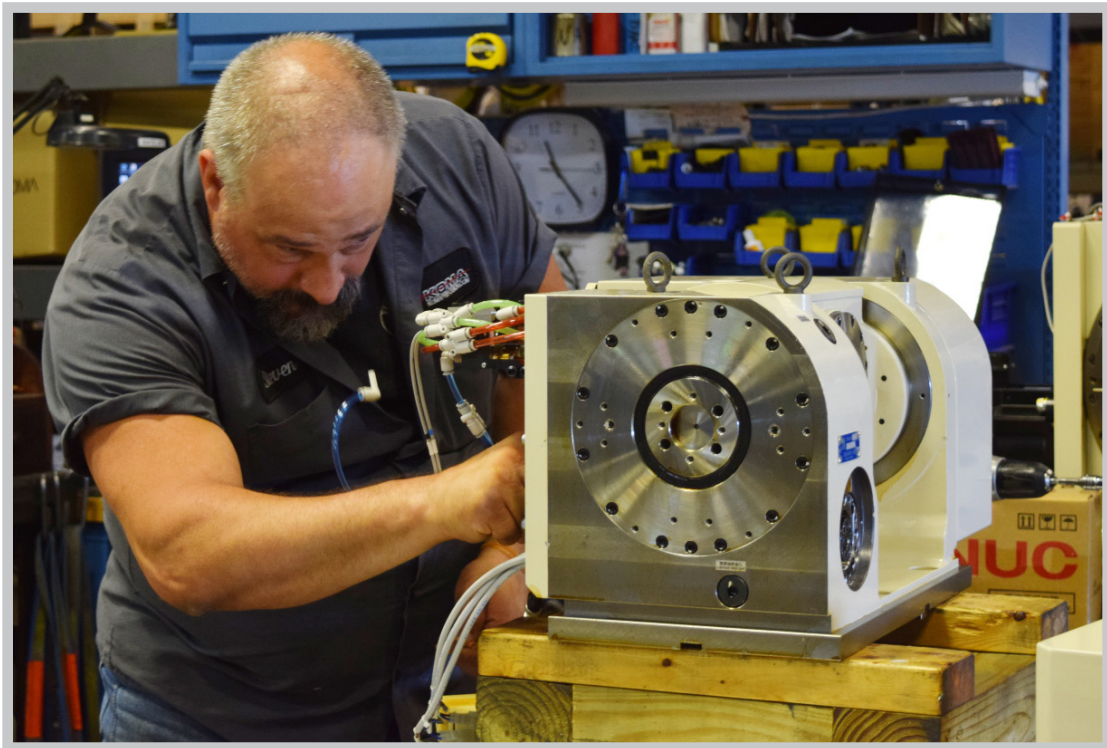






Koma application engineers - with AutoCAD® and SolidWorks® 3D CAD support - ensure products purchased from KOMA will be the best available for the required machining operations. Torque calculations and interference drawings are standard no-charge, value added services offered by Koma Precision. Koma regional managers partner with OEM's and machine tool dealers from coast to coast to assist with product selection, guaranteeing complete customer satisfaction.

## Over 35 Years of Experience



Koma rotary tables and tooling techniques combined years of experience is unsurpassed in the machine tool accessory business. Product shipped from Koma are assembled, optimized, and customized to ensure reliability and complete customer satisfaction. Application specific products are engineered, assembled, and shipped in a time frame comparable to that of standard off the shelf products. State of the art inspection, calibration and testing equipment ensure your rotary tables are built to your specifications.

Koma's commitment to service is unrivalled. We have a state of the art comprehensive service facility. Our factory trained highly skilled service technicians are ready to respond to our customers' immediate service requirements.

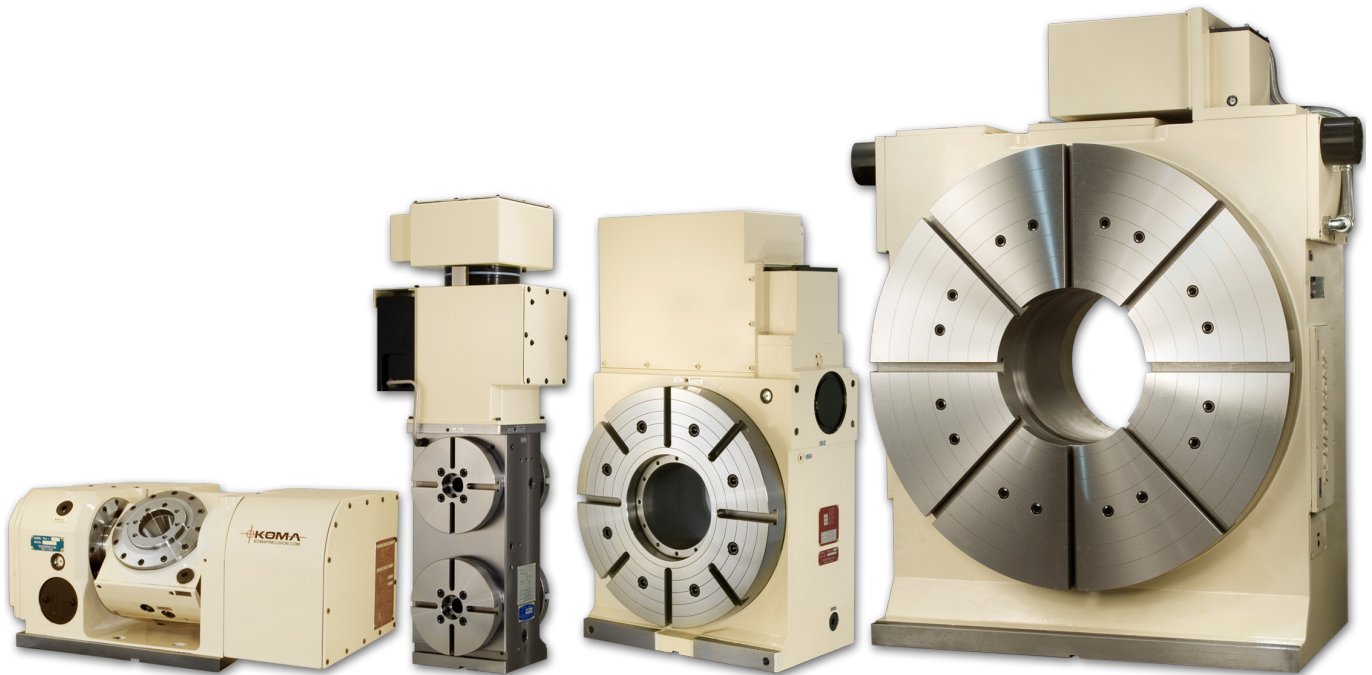
**Our motto:** If we sell it we service it!

**Our goal:** To repair and return your product in factory new condition, while meeting your delivery requirements.

Offering outstanding service is one of our core beliefs that helps our customer compete in today's competitive market.







Tsudakoma is the world's largest and leading manufacturer of NC rotary tables. Tsudakoma rotary tables are available in horizontal, vertical, tilting, multi-spindle, and high speed configurations. A wide range of servomotors, cable packages, custom covers, and custom fixturing allows all standard tables to be modified for integration with many types and styles of machine tools. In addition, special application rotary tables are available built to order.



Tsudakoma specialty rotary tables are the result of a collaboration between the engineering staffs of Tsudakoma, Koma Precision, and the OEM/end user. Features typical of specialized tables include multi-port rotary joints, robotically controlled clamping surfaces, automated part detection, and custom fixturing, custom workholding and part clamping fixtures. Encoder and scale feedback for increased accuracy. Specialty rotary tables generate significantly reduced part costs and substantial improvements in accuracy and throughput.

Alberti angle heads and live tools are designed to facilitate unmatched precision when machining parts with demanding complexity. Tools available from stock include over 50 types of standard angle heads and more than 250 types of standard live tools.

## Alberti





Alberti has over 250 live tools available, all renowned for precision, quality, and reliability. Custom designed live tools and stationary from Koma Precision represent the state of the art in ultra precision and application specific tooling.

# **Alberti**



elbo controllli



Hathor Six



E346

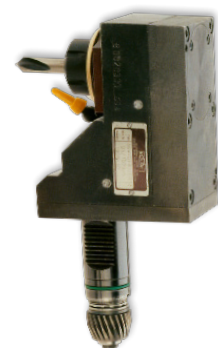
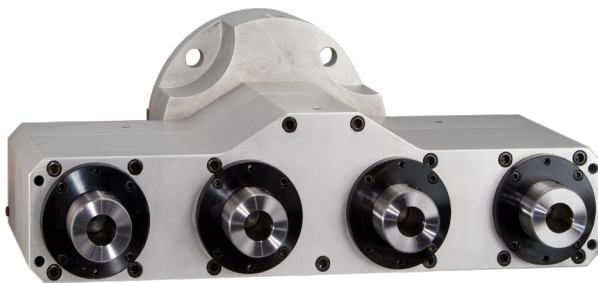
Elbo Controlli Tool Presetters are offered from KOMA Precision with a range of 8 models: Larth, E346, Sethy Six, Hathor Six, 68B, E46L, E46L TW and Amon Ra. These presetters are constructed with natural granite columns and bases for extreme rigidity. Tool inspection is a standard feature on all models. Most offer mechanical clamping of the tool holder pull stud with an original vacuum confirmation system. Sales, service and support is available from Koma Precision on all past and present models of Elbo Controlli Tool Presetters.

## Romai Specialty Tools



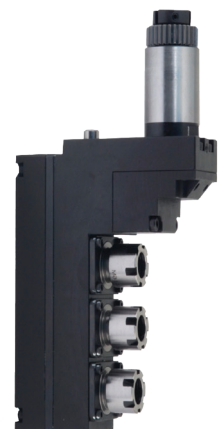
Romai Specialty Tools are designed to meet our customer's specific application requirements. With more than 5,000 worldwide customers serviced over 50 years, Romai stands for precision, reliability, and innovation.

All Romai Specialty tools are manufactured from a special high tensile Aluminium, which exhibits superior strength properties, and is resistant to thermal growth. The surface of Romai toolbodies are sandblasted and anodized for better finish and maximum corrosion resistance. All heads can be equipped with ER type collets or any other custom specified outputs.



## Live Tools for Swiss Type CNC Machines

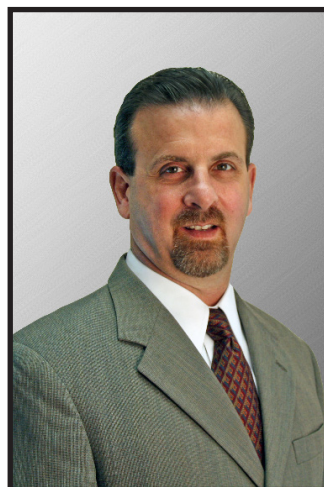
Reduce your costs, improve your efficiency, productivity and part quality. Koma drilling and milling spindles are designed to provide long reliable service while holding the accuracy users expect. Direct replacement of OEM tools, easy to install no modification or retrofitting to the gang block. Gear Driven directly by the live tool motor for maximum torque and speed.







**William T. Meo Jr.**  
CEO



**Barry J. Agosti**  
President



dmeo@komaprecision.com

**David Meo**  
National Sales Manager

Cell: 312-898-8079  
Fax: 860-623-4132

General Manager: Frank Cerrito  
Inside Sales: Aimee Hyland

Purchasing/Parts Manager: Jeff Rubacha  
Production Services Manager: Jim Miller  
Production Planner: David Blais  
Service Manager: Bill Atkins  
Integrations Manager: Carl Capps

### **Marketing Department**

Manager: Janee Agosti  
Web Specialist: Sarah Carlyle  
Graphic Design: Ellen Topitzer

# REGIONAL SALES MANAGERS



mlangdon@komaprecision.com

**Mike Langdon**

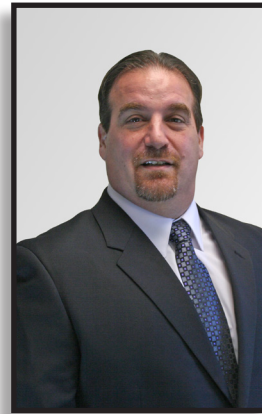
**Northeast Regional**  
Phone: 860-627-7059  
Fax: 860-623-4132  
Cell: 860-490-2496



kirish@komaprecision.com

**Ken Irish**

**Southeast & Eastern  
Canada Regional**  
Phone: 704-238-1818  
Fax: 704-238-1819  
Cell: 704-604-2046



gagosti@komaprecision.com

**Gary Agosti**

**Western & Western  
Canada Regional**  
Phone: 480-722-1270  
Fax: 480-722-1271  
Cell: 602-363-9308



jbettray@komaprecision.com

**Jurgen Bettray**

**Central Regional**  
Cell: 414-882-9949  
Fax: 860-623-4132



jessem@komaprecision.com

**Jesse Meade**

**Midwest Regional**  
Cell: 330-800-7608  
Fax: 860-623-4132



dconnor@komaprecision.com

**Dan O'Connor**

**South Central Regional**  
Cell: 972-824-0566  
Fax: 860-623-4132



avazquez@komaprecision.com

**Arturo Vazquez**

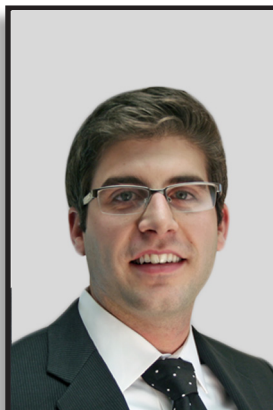
**South Mexico Regional**  
Phone: (+52 1) 722-271-2359  
Fax: 860-623-4132  
Cell: (+52 1) 722-394-8432



yvesm@komaprecision.com

**Yves Martinez**

**North Mexico Regional**  
Phone: (+52 1) 812-166-3711  
Fax: 860-623-4132  
Cell: (+52 1) 811-020-9844



aesposito@komaprecision.com

**Andrew Esposito**

**OEM Sales Manager**  
Cell: 860-335-1694  
Fax: 860-623-4132



**Corporate Headquarters**

20 Thompson Road  
East Windsor, CT 06088  
Phone: 1-800-249-5662  
Fax: 1.860. 623.4132

**Mexico Office**

Josefa Ortiz de Dominguez 306-103  
Barrio de Coaxustenco  
Meteppec, Estado de México  
CP. 52177, México  
Phone: (+52 1) 722-271-2359