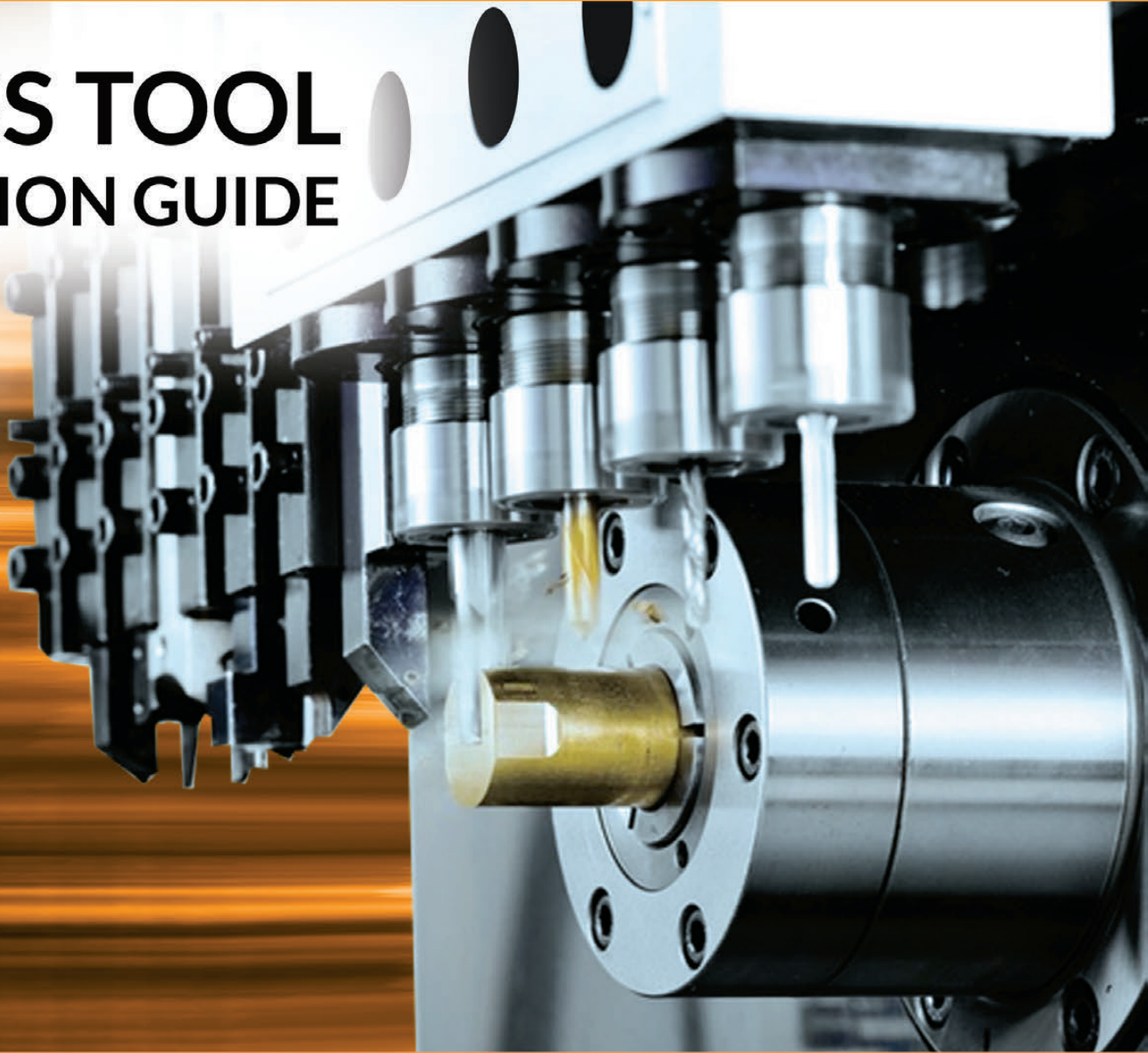


KOMA

SWISS TOOL SELECTION GUIDE



NEXTURN
SWISS TURN LEADER

ABOUT

KOMA PRECISION

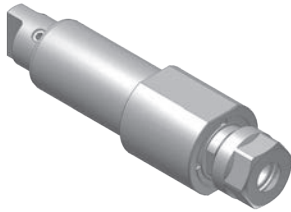
For over thirty years Koma Precision has been the foremost source for the finest the world has to offer in machine tool Productivity Innovation.

With over 30,000 rotary table installations, Koma is the largest distributor of Tsudakoma NC rotary tables and indexers in the world. With over 12,000 angle heads and live tools installed, Koma is the world's largest supplier for Alberti - the originator and the foremost innovator of productivity tooling.



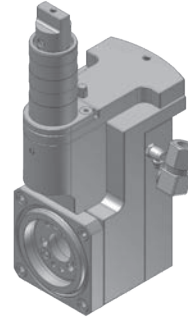
NEXTURN SWISS TOOLING

SA20D/SA32D TOOLING FOR GANG TOOL POST



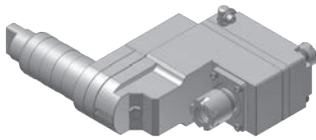
NTA246100
Cross drilling/milling unit

RATIO 1 : 1
RPM(MAX) 6000
TOOL CLAMPING ER16A



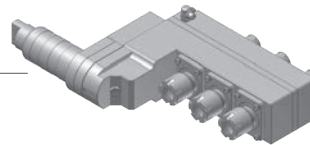
NTA260100
Thread whirling unit

RATIO 1 : 1
RPM(MAX) 6000
THREAD(MAX) M12
HELIX ANGLE $\pm 20^\circ$



NTA566100
1 spindle drilling/milling unit

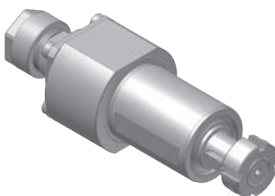
RATIO 1 : 1
RPM(MAX) 6000
TOOL CLAMPING
Front side : ER16
Back side : ER11M



NTA566300
3 spindle drilling/milling unit

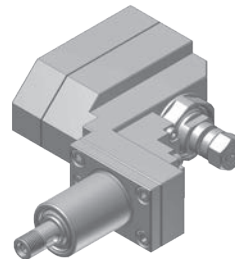
RATIO 1 : 1
RPM(MAX) 6000
TOOL CLAMPING
Front side : ER16M
Back side : ER11M

SA20D TOOLING FOR BACK TOOL POST



NTA741100
Drilling/milling unit

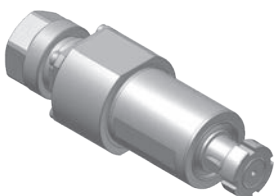
RATIO 1 : 1
RPM(MAX) 8000
TOOL CLAMPING ER11A



NTA730100-20
Slotting unit

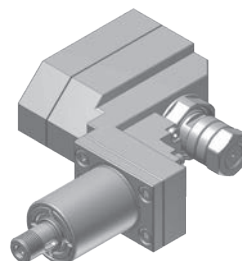
RATIO 1 : 0.55
RPM(MAX) 4000
SAW OD(MAX) $\varnothing 50$ mm
SAW ARBOR SHANK $\varnothing 8.0$ mm

SA32D TOOLING FOR BACK TOOL POST



NTA746100
Drilling/milling unit

RATIO 1 : 1
RPM(MAX) 8000
TOOL CLAMPING ER16A



NTA730100-32
Slotting unit

RATIO 1 : 0.55
RPM(MAX) 4000
SAW OD(MAX) $\varnothing 50$
SAW ARBOR SHANK $\varnothing 12.0$ 12.7 13.0

Tel: 1.800.249.5662
Fax: 860.623.4132

info@komaprecision.com
www.komaprecision.com

20 Thompson Road
East Windsor, CT 06088

