



*we*innovate cooking

KITCHENS DIAMANTE 70

ELECTRIC RANGES

Model

D74/10CEPQ

Code

CR0993789

General characteristics

Stainless steel outer coatings and feet.
Worktops made of 1,5 mm thick, brushed AISI 304 stainless steel.
Adjustable worktop height from 840 to 900 mm.
Contoured control panels with controls tilted towards the operator.
Large knobs that do not protrude from the machine structure.
Range modularity: 200-400-600-800-1200.
Simple and effective coupling system.
Appliances set up for the plinth.
Vast accessory range.
Appliances in compliance with CE standards.

4-SQUARE-HOTPLATE ELECTRIC RANGE ON OPEN CUPBOARD



Technical/functional characteristics

Outer casing and feet in stainless steel.
Adjustable worktop height, ranging from 840 to 900 mm.
Shaped cooker control panel with knobs slanted towards the operator.
Square plate version 220x220 and 2.6 kW.
7-position selector switch to adjust and regulate heating.

Technical Data

| | |
|--------------------------|------------|
| Model | D74/10CEPQ |
| Width (mm) | 800,00 |
| Depth (mm) | 730,00 |
| Height (mm) | 870,00 |
| VOLUME | 0,75 |
| WEIGHT | 80,00 |
| SUPPLY | |
| Gas power | |
| Electric power | 10.4 |
| Internal ovens dimension | |
| OVEN CAPACITY | |
| Plate dimensions (mm) | |
| TANK DIMENSIONS | |
| Tank capacity (l) | |

ELECTRIC RANGES

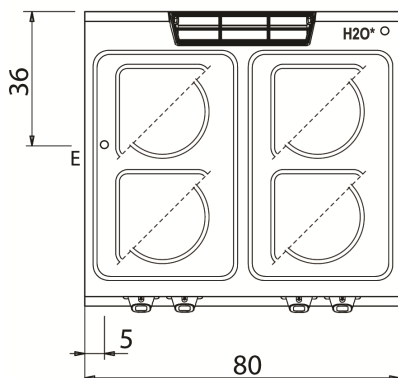
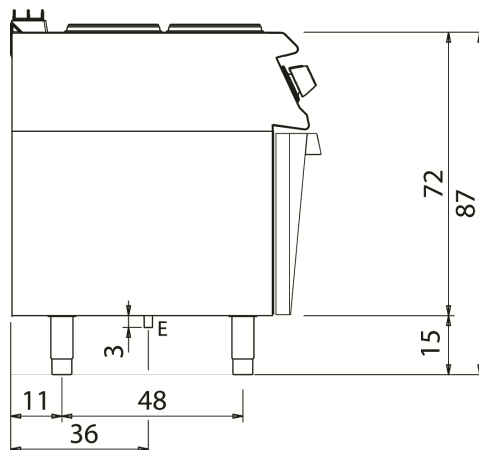
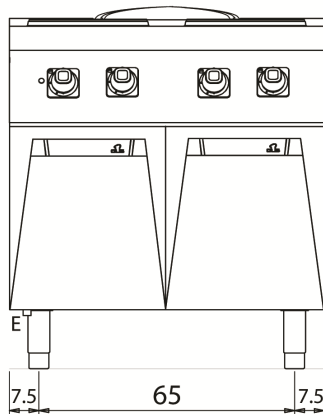
Model

D74/10CEPQ

Code

CR0993789

D74/10 CEPQ



KEY

- E** power supply
- G** gas connection
- H2O** water inlet
- S** water outlet

| Connection | Power | Diameter | Supply |
|---------------------------|-------|----------|--------|
| Gas connection | | | |
| Electric connection | 10.4 | 400 | |
| Cold water connection | | | 0 |
| Hot water connection | | | |
| Cold soft water connecton | | | |
| Drain (Ø) | | | |
| 2° Drain (Ø) | | | |