



*we*innovate cooking

KITCHENS DIAMANTE 90

PASTA-COOKER

Model

D94/10CPG

Code

CR0991009

General characteristics

Stainless steel outer coatings and feet.
Worktops made of 2 mm thick, brushed AISI 304 stainless steel.
Adjustable worktop height from 840 to 900 mm.
Contoured control panels with controls tilted towards the operator.
Large knobs that do not protrude from the machine structure.
Range modularity: 200-400-600-800-1200.
Simple and effective coupling system.
Appliances set up for the plinth.
Vast accessory range.
Appliances in compliance with CE standards.

2-BASINS GAS PASTA-COOKER 40LTS.



Technical/functional characteristics

Outer casing and feet in stainless steel. Adjustable worktop height, ranging from 840 to 900 mm. Moulded AISI 316 stainless steel pan with rounded edges to guarantee maximum corrosion resistance.
Electrovalve-controlled fast or slow water loading operations.
Stainless steel water dispenser and water discharge unit at ground level. Safety manostat to avoid heating operations when no water in bowl. Gas model: stainless steel burner mounted on the outside of the bowl for heating operations. Gas safety valve with thermocouple, and electric ignition.

Technical Data

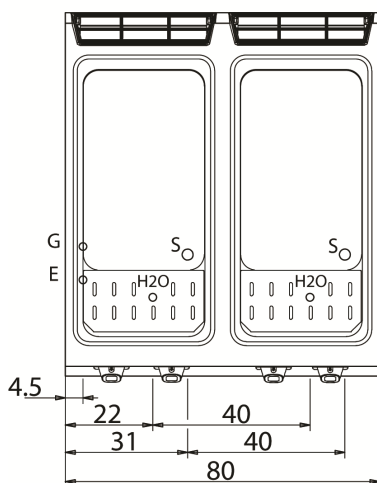
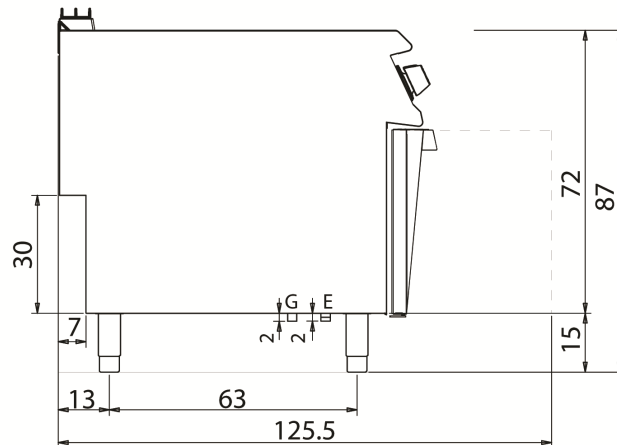
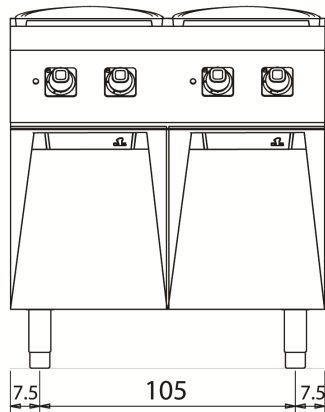
Model	D94/10CPG
Width (mm)	800,00
Depth (mm)	900,00
Height (mm)	870,00
VOLUME	1,00
WEIGHT	170,00
SUPPLY	GAS-EL
Gas power	28
Electric power	0.2
Internal ovens dimension	
OVEN CAPACITY	
Plate dimensions (mm)	
TANK DIMENSIONS	310x510x275h
Tank capacity (l)	2x40Lt.

PASTA-COOKER

Model
D94/10CPG

Code
CR0991009

D94/10 CPG



KEY

- E** power supply
- G** gas connection
- H2O** water inlet
- S** water outlet

Supply

Gas connection	28	1/2"	
Electric connection	0.2	230	
Cold water connection		3/4"	0
Hot water connection			
Cold soft water connection			
Drain (Ø)		1"	
2° Drain (Ø)			