



*we*innovate cooking

KITCHENS DIAMANTE 70

NEUTRAL UNITS

Model

D73/10TENC

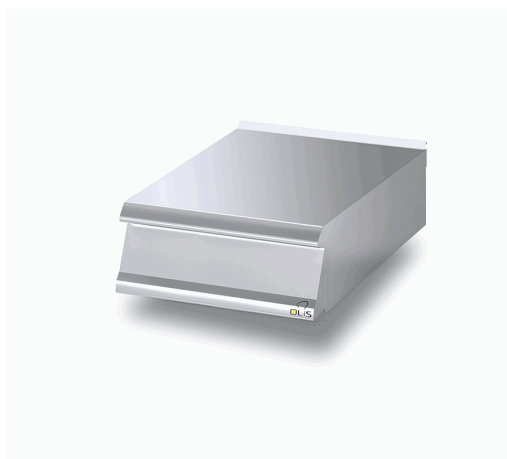
Code

CR0994999

General characteristics

- Stainless steel outer coatings and feet.
- Worktops made of 1,5 mm thick, brushed AISI 304 stainless steel.
- Adjustable worktop height from 840 to 900 mm.
- Contoured control panels with controls tilted towards the operator.
- Large knobs that do not protrude from the machine structure.
- Range modularity: 200-400-600-800-1200.
- Simple and effective coupling system.
- Appliances set up for the plinth.
- Vast accessory range.
- Appliances in compliance with CE standards.

NEUTRAL UNIT WITH DRAWER TOP



Technical/functional characteristics

Outer casing and feet in stainless steel. Model with drawer: drawers for containing bowls with a max. height of 150 mm, fixed drawer rails

Technical Data

Model	D73/10TENC
Width (mm)	600,00
Depth (mm)	730,00
Height (mm)	250,00
VOLUME	0,23
WEIGHT	38,00
SUPPLY	
Gas power	
Electric power	
Internal ovens dimension	
OVEN CAPACITY	
Plate dimensions (mm)	
TANK DIMENSIONS	
Tank capacity (l)	

NEUTRAL UNITS

Model

D73/10TENC

Code

CR0994999

KEY

- E** power supply
- G** gas connection
- H2O** water inlet
- S** water outlet

Connection	Power	Diameter	Supply
Gas connecton			
Electric connecton			
Cold water connecton			
Hot water connecton			
Cold soft water connecton			
Drain (∅)			
2° Drain (∅)			