

## Ice Machine/Dispenser up to 125 kg

Item #:
Project:
Quantity:



### FEATURES

- Smarter Construction - Durable stainless steel evaporator and exterior panels. Greaseless bearings for reduced maintenance. Larger sink opening and dispensing area. Antimicrobial Aqua-Armor with AgION is molded into key components.
- Space maximizing design - The industry's smallest operational footprint relative to capacity. Featuring specially designed contoured sides for enhanced breathability and an external air filter.
- More convenient front access - Removable front panels allow ease of access and service to all key internal components. Including removable storage bin for better cleaning and maintenance access.
- Enhanced service features - Intuitive LED diagnostic lights reduce service time. Unit specific QR code for quick access to service manuals and warranty history. Convenient USB drive that allows for fast software updates. New removable sink and grill provide maximum access for ease of cleaning.



HID 312  
Cubelet 1 g  
W 16 x D 15 x H 7-8 mm

### CONDENSING SYSTEM

Air cooled

### INTERNAL BIN CAPACITY

5 kg

### REFRIGERANT GAS

R404A

### OPERATING REQUIREMENTS

	Minimum	Maximum
Air temperature	10°C	43°C
Water temperature	5°C	38°C
Water pressure	1 bar (14 psi)	5 bar (70 psi)
Electrical voltage	-10%	+10%

Certifications:



**IMPORTANT NOTICE:**  
Models and specifications are subject to change without notice. This spec sheet is meant for commercial purpose only. For technical documentation please refer to our service manuals.

Download our free App Scotsman Ice  
Apple store  
Google play  
Windows store



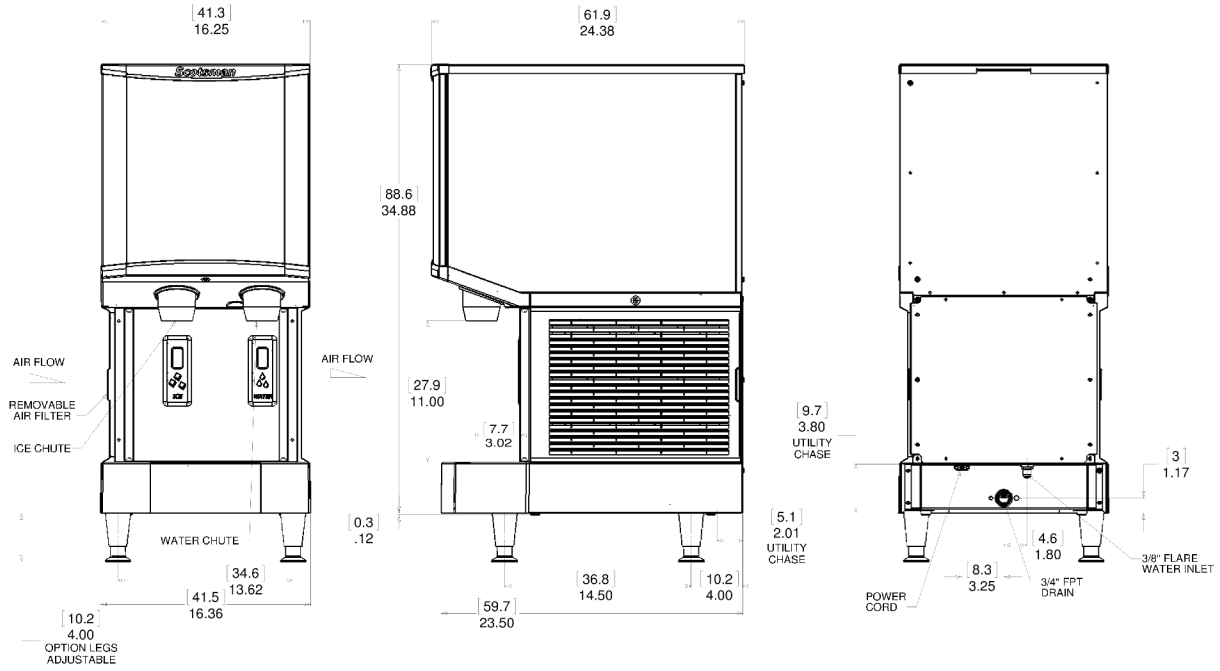
[www.scotsman-ice.it](http://www.scotsman-ice.it)  
[www.scotsman-ice.com](http://www.scotsman-ice.com)

Ice Machine/Dispenser up to 125 kg

## Ice Machine/Dispenser up to 125 kg

Item #:
Project:
Quantity:

Ice Machine/Dispenser up to 125 kg



UNIT OF MEASUREMENT: mm

UNIT DATA		Compressor		Circuit wires		Max. fuse size		
		Version	Voltage	Btu/h	W	No.	Ømm²	A
Size (W x D x H)	415 x 619 x 991 mm	HID 312 AS	230/50/1	0				15
Net weight	90 kg	HID 312 AS	115/60/1	0				15
SHIPPING DATA		Carton (W x D x H)		620 x 690 x 1060 mm		Weight		83 kg

Version	Condensation	Voltage	24 h ice production kg °C Amb. / °C Water			Energy consumption*		Water usage*	Instant power
			10°C/10°C	21°C/10°C	32°C/21°C	kWh/100 kg	kWh/24h	l/h	W
HID 312 AS	Air	230/50/1	115	110	91			0.0	
HID 312 AS	Air	115/60/1	125	118	102	2.2		0.2	

(\* Data refer to 32°C Amb. / 21°C Water temperature conditions)