

E20 400V/3N/50Hz

Tecnomac®

E20-80

E20-110

+3° **80** KG
+90°C → +3°C

-18° **65** KG
+90°C → -18°C

+3° **110** KG
+90°C → +3°C

-18° **95** KG
+90°C → -18°C



Carrello - Trolley

GN1/1 Forni/Ovens - GN 2/1 Std. - EN 600x800

Spessore Isolamento - Thickness insulation

Pareti - Walls 70 mm Fondo - Floor 60 mm

Optional

Fondo-Floor:20 mm (solo Vers.Positiva/Only Positive Version)

Gruppo frigorifero - Refrigeration Group

Optional

Unità condensante a Bordo-Condensing group on board

Unità condensante remota -Remote Condensing group

Sbrinamento - Defrost

Gas Caldo e ventilazione forzata

Hot Gas and Forced ventilation

Caratteristiche - Features

Codice prodotto Item code no	E20-80	E20-80RE	E20-110RE
Alimentazione Elettrica Power Supply	400V/3N/50HZ	400V/3N/50HZ	400V/3N/50HZ
Lunghezza esterna Outside length mm	890	890	890
Altezza Height mm	2410	2410	2410
Profondità Depth mm	1335	1335	1335
Dimensione max carrello (mm) Max Trolley Dimensions (mm)	680 x 860 x H 1850	680 x 860 x H 1850	680 x 860 x H 1850
Resa abbattimento Output chilling kg +90°C/+3°C	80	80	110
Resa surgelazione Output freezing kg +90°C/-18°C	65	65	95
Potenza assorbita Absorbed power	3900 W	475 W + 3425 W	475 W + 4200 W
Dati spedizione Box- Cartone mm	990 x 1532 x H2570	990 x 1532 x H2570	990 x 1532 x H2570
Peso netto/lordo Net*/Gross Weight (kg)	353/430 kg	255/332 kg	255/332 kg
	Unità a Bordo No remote Unit	Unità Remote (dimensioni per distanza max 10m) Remote Unit (dimensions for distance max 10 m)	
Alimentazione / Voltage	-	400V/3N/50HZ	400V/3N/50HZ
Potenza Frigorifera / Refrigeration Power (-10°C/+40°C)	3 HP (8250W)	3 HP (8250W)	4 HP(12510W)
Sbrinamento / Defrost	Gas caldo / Hot gas	Gas caldo / Hot gas	Gas caldo / Hot gas
Cavo alimentazione/Cable size 5 m included	5 x 2.5 mm	5 x 2.5 mm	5 x 2.5 mm
Diametro Tubo Mandata/ Diameter Discharge Pipe mm	-	12	12
Diametro Tubo Aspirazione/ Diameter Suction Pipe mm	-	22	22
Diametro Tubo Gas Caldo/ Diameter Hot Gas Pipe mm	-	10	10
Gas / Gas Type	R 404a	R 404a	R 404a
Dati spedizione /Shipping Data mm peso/weight (kg)	-	700x1100x750 (170Kg)	700x1100x750 (170Kg)

E20-80 TECNOMAC 400V-3N-50HZ-005.indd

E20 Abbatitori - Blast Chillers/Freezer

Castel MAC SpA

Via del Lavoro,9 - C.P. 172
I - 31033 Castelfranco Veneto (TV)
ITALY EU

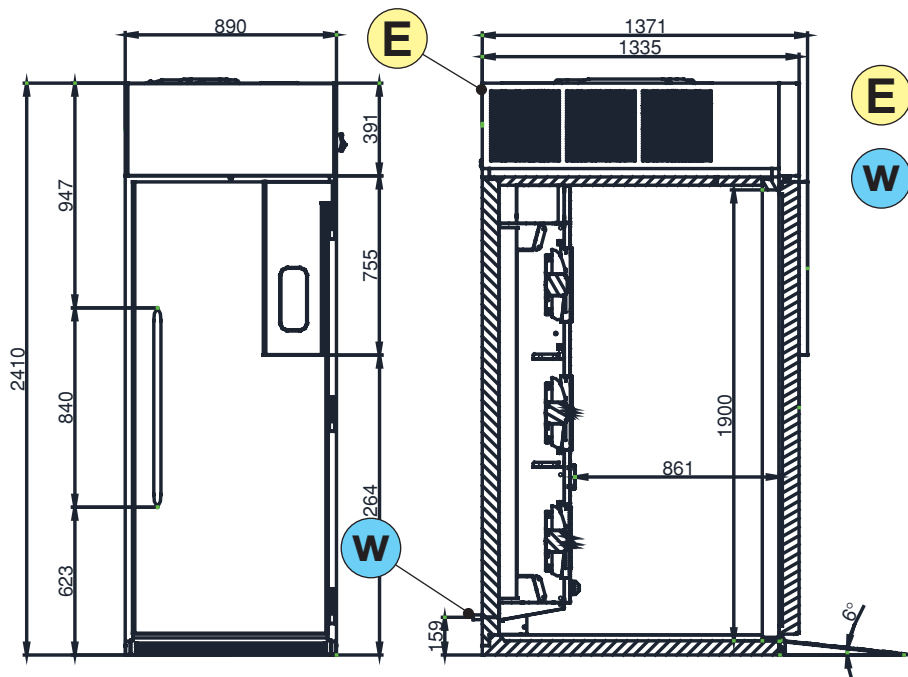
Tel. +39 0423 738452
Fax +39 0423 722811

Tecnomac

E20 400V/3N/50Hz

Tecnomac®

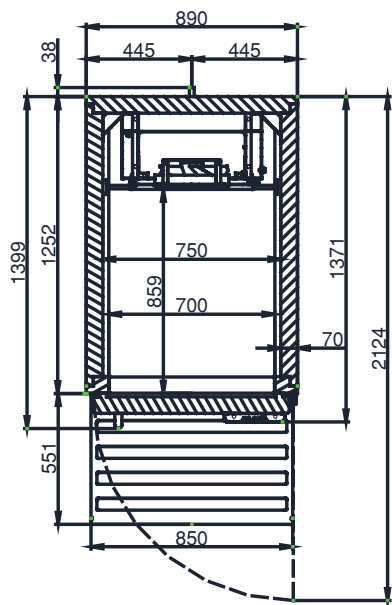
E20 Abbatitori - Blast Chillers/Freezer



E ELECTRICAL CABLE SUPPLY
ALIMENTAZIONE ELETTRICA

W DRAINAGE DISCHARGE
SCARICO ACQUA

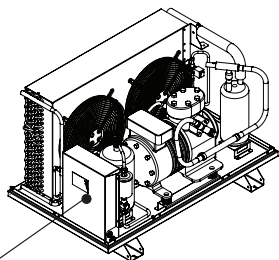
EXT. DIAM. 20 mm



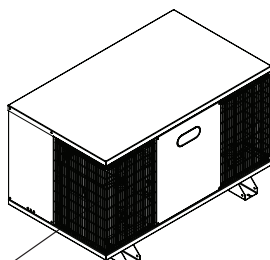
QUADRO COMANDI
CONTROL PANEL



UNITA' REMOTE - REMOTE UNIT FEATURES



ALIMENTAZIONE ELETTRICA
ELECTRICAL SUPPLY



ALIMENTAZIONE ELETTRICA
ELECTRICAL SUPPLY

UNITA'
CONDENSATRICE
CARENTA

CONDENS. UNIT WITH
BOX



E20-80 TECNOMAC 400V-3N-50HZ-005.indd

Castel MAC SpA

Via del Lavoro,9 - C.P. 172
I - 31033 Castelfranco Veneto (TV)
ITALY EU

Tel. +39 0423 738452
Fax +39 0423 722811

Tecnomac