



*we*innovate cooking

## KITCHENS

### DIAMANTE 70

#### GRIDDLE PLATES

Model

D76/10FTTG1/3R

Code

CR0994179

#### General characteristics

Stainless steel outer coatings and feet.  
Worktops made of 1,5 mm thick, brushed AISI 304 stainless steel.  
Adjustable worktop height from 840 to 900 mm.  
Contoured control panels with controls tilted towards the operator.  
Large knobs that do not protrude from the machine structure.  
Range modularity: 200-400-600-800-1200.  
Simple and effective coupling system.  
Appliances set up for the plinth.  
Vast accessory range.  
Appliances in compliance with CE standards.

#### GAS GRIDDLE WITH CHROMIUM 1/3 GROOVED PLATE ON OPEN CUPBOARD



#### Technical/functional characteristics

Outer casing and feet in stainless steel.  
Adjustable worktop height, ranging from 840 to 900 mm.  
Recessed hot plate, 40 mm lower than worktop surface.  
Hot surface with hard polished chrome plating mixed.  
Plate slants 10mm forwards.  
Large grease drawer.  
Burner with self-stabilizing flame.  
Temperature adjustment and regulation with safety tap and thermocouple (200-400°C) or thermostat safety valve with thermocouple (110-280°C).

#### Technical Data

Model	D76/10FTTG1/3R
Width (mm)	1.200,00
Depth (mm)	730,00
Height (mm)	870,00
VOLUME	0,76
WEIGHT	0,00
SUPPLY	GAS
Gas power	19.5
Electric power	
Internal ovens dimension	
OVEN CAPACITY	
Plate dimensions (mm)	1135x530x14.5
TANK DIMENSIONS	
Tank capacity (l)	

### GRIDDLE PLATES

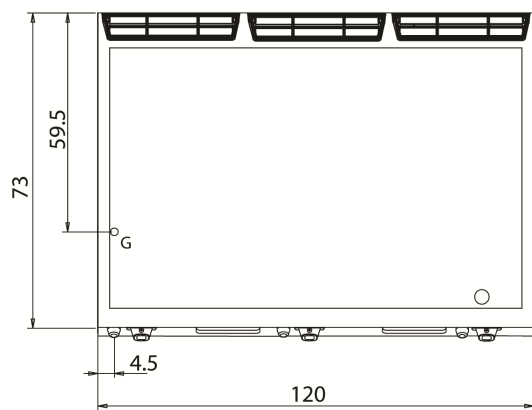
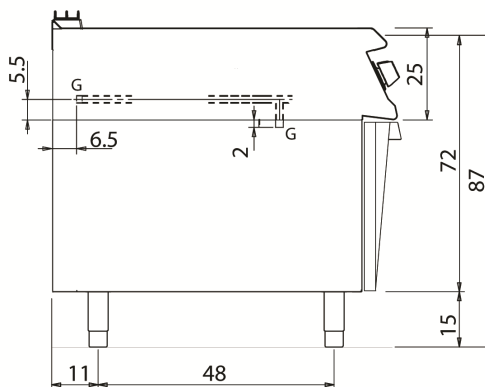
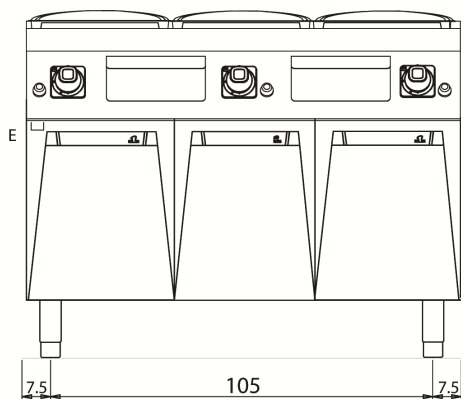
Model

D76/10FTTG1/3R

Code

CR0994179

#### D76/10 FTTG1/3R\*



#### KEY

- E** power supply
- G** gas connection
- H2O** water inlet
- S** water outlet

Connection	Power	Diameter	Supply
Gas connection	19.5	1/2"	
Electric connection			
Cold water connection			
Hot water connection			
Cold soft water connection			
Drain (Ø)			
2° Drain (Ø)			