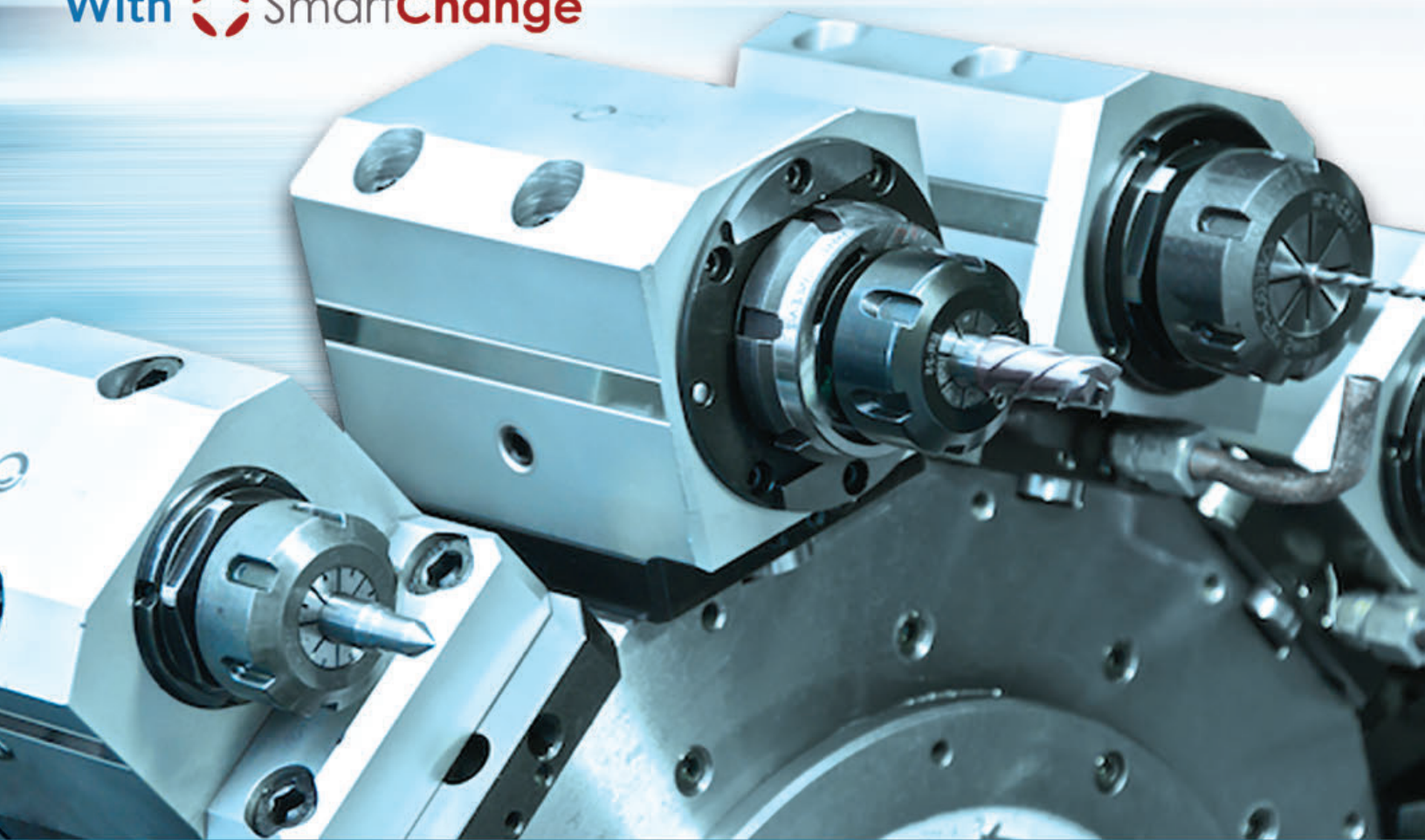




 **Alberti**
LIVE TOOLS
With  **SmartChange**





KOMA PRECISION

For over thirty years Koma Precision has been the foremost source for the finest the world has to offer in machine tool Productivity Innovation.



With over 30,000 rotary table installations, Koma is the largest distributor of Tsudakoma NC rotary tables and indexers in the world. With over 12,000 angle heads and live tools installed, Koma is the world's largest supplier for Alberti - the originator and the foremost innovator of productivity tooling.



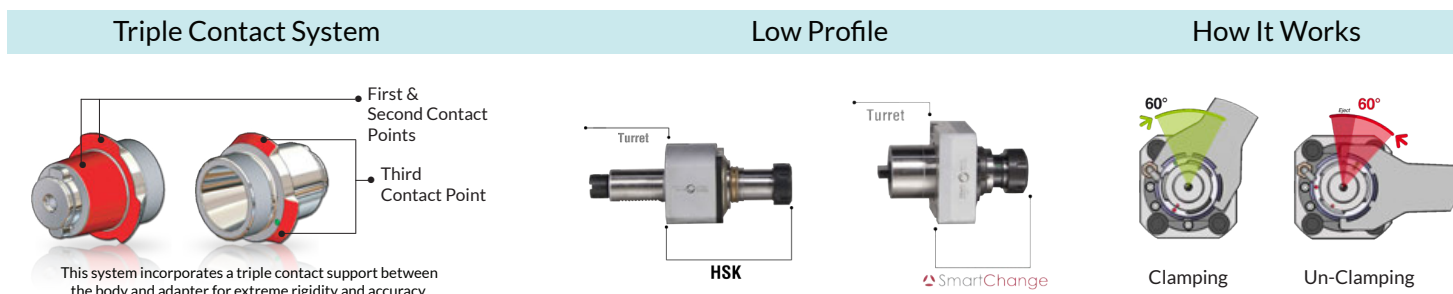



SMART CHANGE SYSTEM

SMART CHANGE SYSTEM

New from Alberti, a complete range of live tools with interchangeable adapters for Okuma are now available in stock. The  SmartChange System units have a standard profile with **no additional projection** to reduce the chance of interference with the machine's enclosures. Alberti's patent pending design creates **three points of contact** between the driven tool holder body and tool holder output surfaces so there is no compromise in concentricity and rigidity to gain the speed and convenience of quick-change tooling. With the  SmartChange System one set of live tools can always stay in the machine with only the adapters needing to be changed. This provides **improved efficiency and flexibility**, plus a reduction in overall tooling costs.

QUICK, EASY & PRECISE

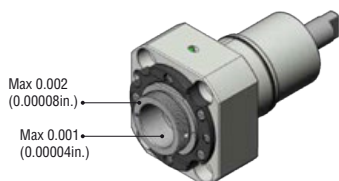


The patent pending Alberti  SmartChange collet clamp & wrench system quickly and precisely locks the quick change adapter, reducing tool cutter changing time to a minimum.

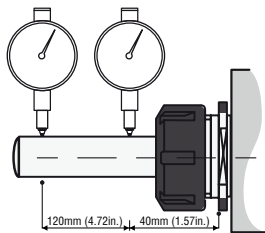
HIGHEST ACCURACY & REPEATABILITY

Run-Out of the Collet Chuck with Adapter Mounted Repeatability	0.006 μ m
Adapter Change Time	20 seconds
Repeatability	0.003mm (0.0001 in.)

Run Out with  SmartChange System



Accuracy with Gauge Bar Inserted in the Collet Chuck



Accuracy with Gauge Bar Inserted in the Collet Chuck

at 40mm = 0.008mm (1.57in. = 0.0003in.)
at 120mm = 0.01mm (4.72in. = 0.0004in.)



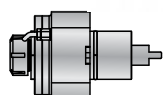
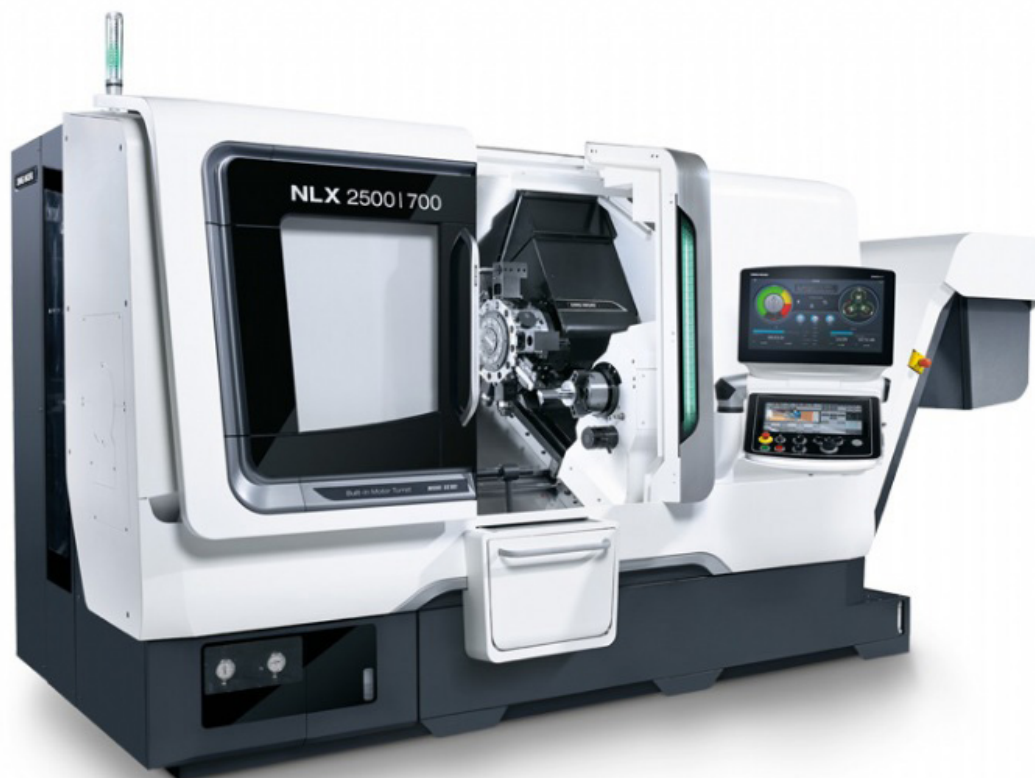
ER Collet Chuck



Weldon Output

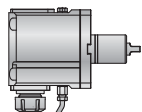


Shell Mill Output



STRAIGHT TOOLS

Tool	Tool Type	GH Number	Output	Torque	RPM	Price
MA-3.5	Standard	GH-66323-00	SC2*	45	6,000	\$2,750
MA-3.5 RI	Coolant Thru	GH-66617-00	SC2*	45	6,000	\$4,350



90° TOOLS

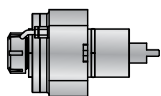
Tool	Tool Type	GH Number	Output	Torque	RPM	Price
M90-3.5	Standard	GH-66324-00	SC2*	45	6,000	\$4,800
M90-3.5 RI	Coolant Thru	GH-66621-00	SC2*	45	6,000	\$6,500

Coolant Pressure = 70 Bar/1050 PSI • RPM = Maximum

*Each tool comes standard with an ER SmartChange Adapter, a Main Spindle Anti-Rotation Wrench & a Long Handle Wrench for Lock / Unlock Nut. For additional adapters & accessories, see below.

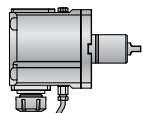


NZX 1500 | NZX 2000



STRAIGHT TOOLS

Tool	Tool Type	GH Number	Output	Torque	RPM	Price
MA-2.5	Standard	GH-66741-00	SC2*	-	6,000	\$1,950
MA-2.5 RI	Coolant Thru	GH-66742-00	SC2*	-	6,000	\$3,050



90° TOOLS

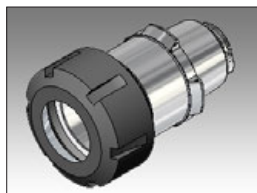
Tool	Tool Type	GH Number	Output	Torque	RPM	Price
M90-2.5	Standard	GH-66743-00	SC2*	25	6,000	\$3,650
M90-2.5 RI	Coolant Thru	GH-66744-00	SC2*	25	6,000	\$4,850

Coolant Pressure = 70 Bar/1050 PSI • RPM = Maximum

*Each tool comes standard with an ER SmartChange Adapter, a Main Spindle Anti-Rotation Wrench & a Long Handle Wrench for Lock / Unlock Nut. For additional adapters & accessories, see below.



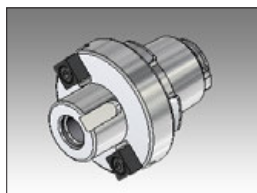
ADDITIONAL ADAPTERS



ER COLLETS		
Size	List Price	
ER-20	\$520	SC2-ER20
ER-25	\$520	SC2-ER25
ER-32	\$520	SC2-ER32



WELDON OUTPUTS		
Size	List Price	
1/4"	\$400	SC2-.250
3/8"	\$400	SC2-.375
1/2"	\$400	SC2-.500
5/8"	\$400	SC2-.625



SHELL MILL ARBORS		
Size	List Price	
3/4"	\$475	SC2-SM.750

MEASURING FIXTURES



SMART CHANGE TOOL POT		
Size	List Price	
40 Taper	\$950	GP-56661-00
50 Taper	\$950	GP-56548-00



HOLDING FIXTURE	
List Price	
\$750	GP-56968-00

Note: Holding fixture does not include adapter and wrench.



Alberti DMG/Mori Seiki SC 19.0 1/10/19



Tel: 1.800.249.5662
Fax: 860.623.4132

info@komaprecision.com
www.komaprecision.com

20 Thompson Road
East Windsor, CT 06088

