

KOMMA

 **Alberti**
MINILINE
SLIMLINE



brother®



ABOUT US

KOMA PRECISION

For over thirty years Koma Precision has been the foremost source for the finest the world has to offer in machine tool Productivity Innovation.

With over 30,000 rotary table installations, KOMA is the largest distributor of Tsudakoma NC rotary tables and indexers in the world. With over 12,000 angle heads and live tools installed, KOMA is the world's largest supplier for Alberti - the originator and the foremost innovator of productivity tooling.





MINILINE 1.5



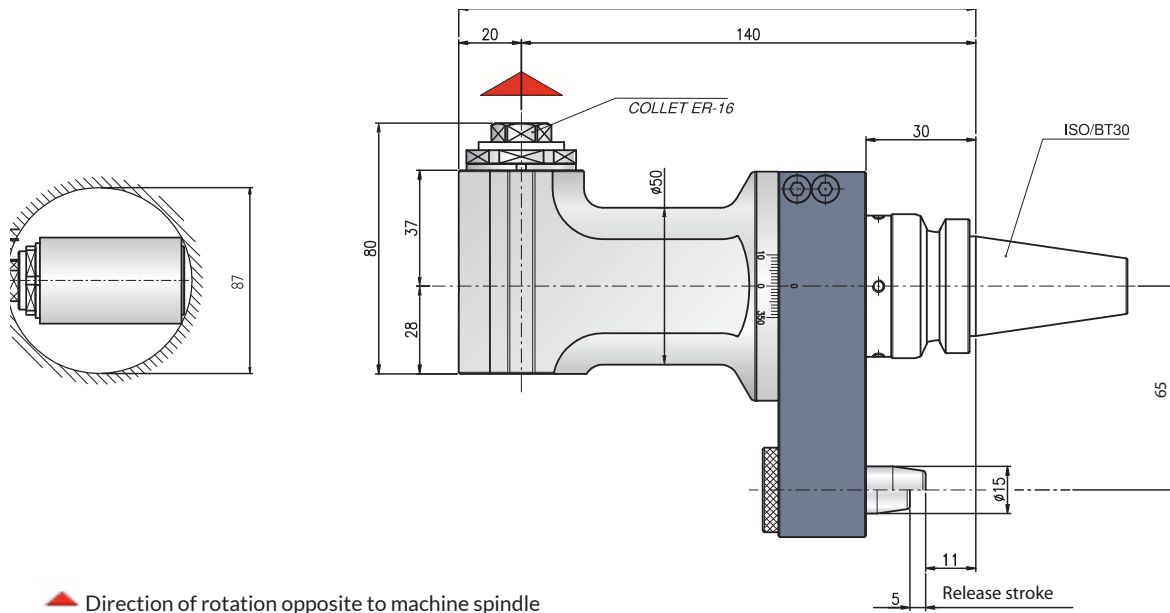
With over 12,000 angle heads and live tools installed, KOMA Precision is the world's largest supplier for ALBERTI - the originator and the foremost innovator of productivity tooling.

ALBERTI: A COMPLETE RANGE OF PRODUCTIVITY TOOLING WITHOUT COMPARISON

ALBERTI has been manufacturing angle heads since 1986. Within a few years ALBERTI tooling became internationally renowned for precision, quality, and reliability. Available tools include over 50 different types of standard angle heads and more than 250 types of standard live tools. ALBERTI innovation and passion for perfection has made it the world leader in precision tooling.



MINILINE



▲ Direction of rotation opposite to machine spindle

MINILINE 1.5

Lightweight Body
Spindle Driven

Max. RPM 6,000 RPM
Max. Tool Capacity 10 mm
DRILLING | MILLING | TAPPING

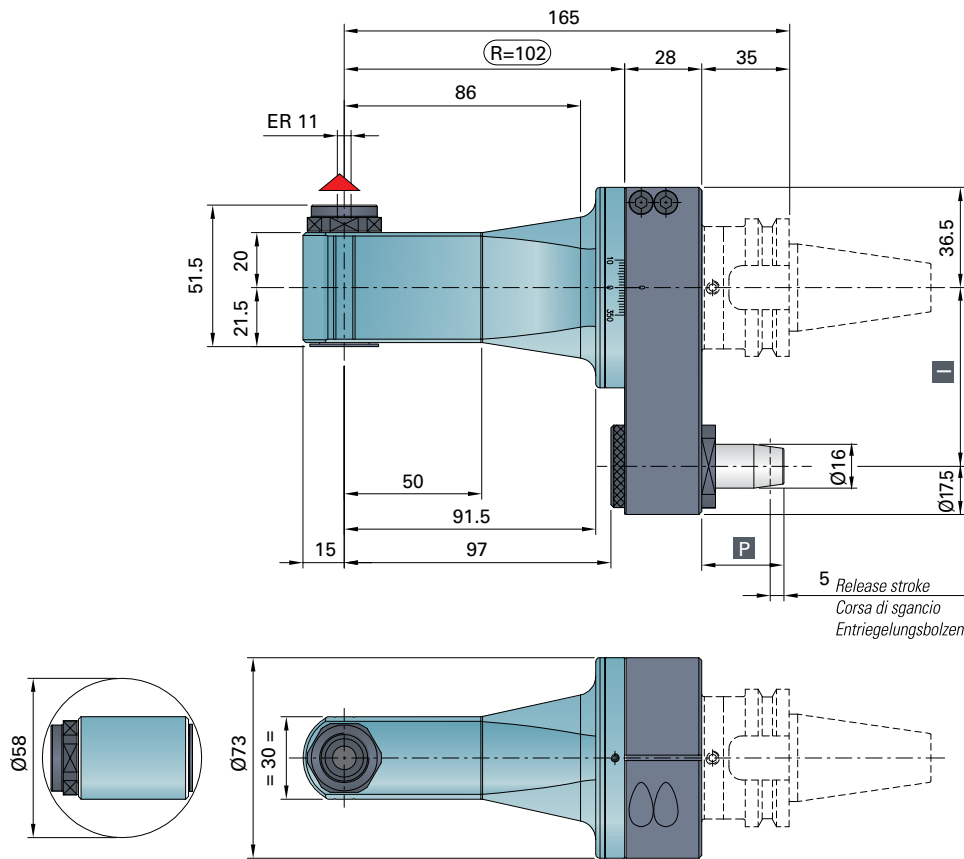
TECHNICAL DATA

Miniline 1.5 / 30			
Tool RPM maximum	6,000	Ratio	1/1
Max. Axial load	250 N	Torque	7 Nm
Weight	6.6 lbs	Collet	ER-16 \varnothing 1/10 mm

Included with Tool: Storage Case • Wrenches • Grease Instruction Manual



ALUMINUM



▲ Direction of rotation opposite to machine spindle

TECHNICAL DATA

ALUMINUM T90cn-0.5M			
Tool RPM maximum	10,000	Ratio	1/1
Max. Axial load	120 N	Torque	8 Nm
Weight	5.95 lbs	Collet	ERAX-11 (0.5-7 mm)

Included with Tool: Storage Case • Wrenches • Grease
Instruction Manual

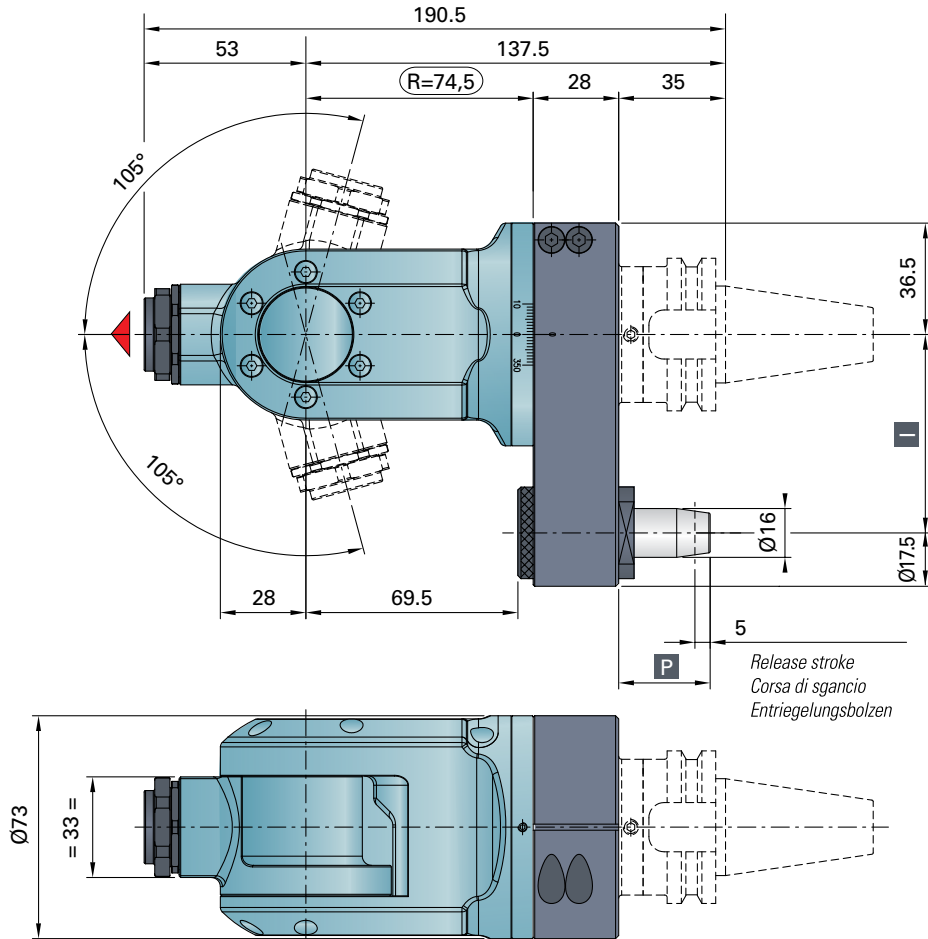
ALUMINUM T90CN-0.5M

Lightweight Body
Spindle Driven

Max. RPM 10,000 RPM
DRILLING | MILLING | TAPPING



ALUMINUM



▲ Direction of rotation opposite to machine spindle

ALUMINUM TCUcn-0.5M

Lightweight Body
Spindle Driven

Max. RPM 6,000 RPM
DRILLING | MILLING | TAPPING

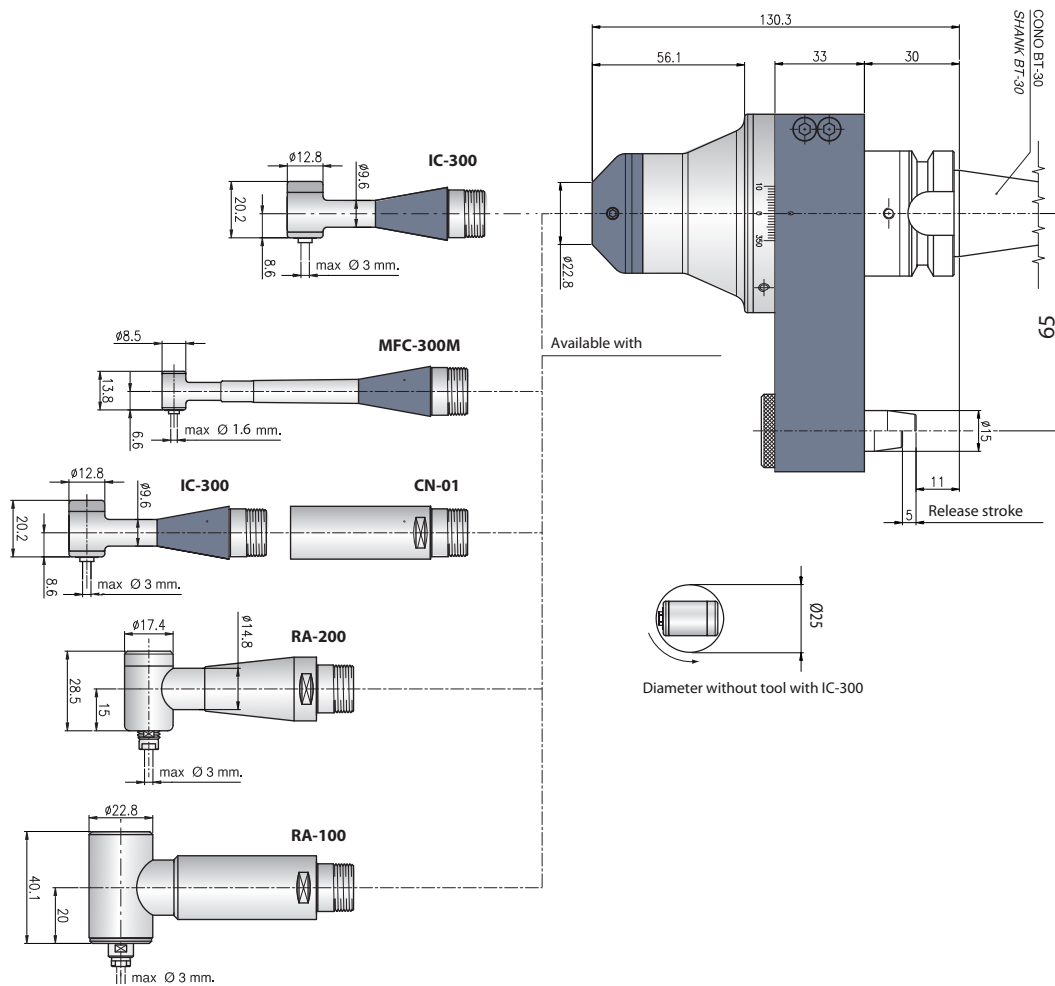
TECHNICAL DATA

ALUMINUM TCUcn-0.5M			
Tool RPM maximum	6,000	Ratio	1:1.5 (Speeder)
Max. Axial load	215 N	Torque	8 Nm
Weight	6.17 lbs	Collet	ERAX-11 (0.5-7 mm)

Included with Tool: Storage Case • Wrenches • Grease Instruction Manual



SLIMLINE



TECHNICAL DATA

IC-300 *			
Tool RPM maximum	20,000	Reduction Ratio	3/4
Collet	CHM \varnothing 3	Type Spindle	IC-300
Rotation	Right, left	Weight	6.6 lbs

Included with Tool: Storage Case • Wrenches • Grease • Instruction Manual
 *For special applications only

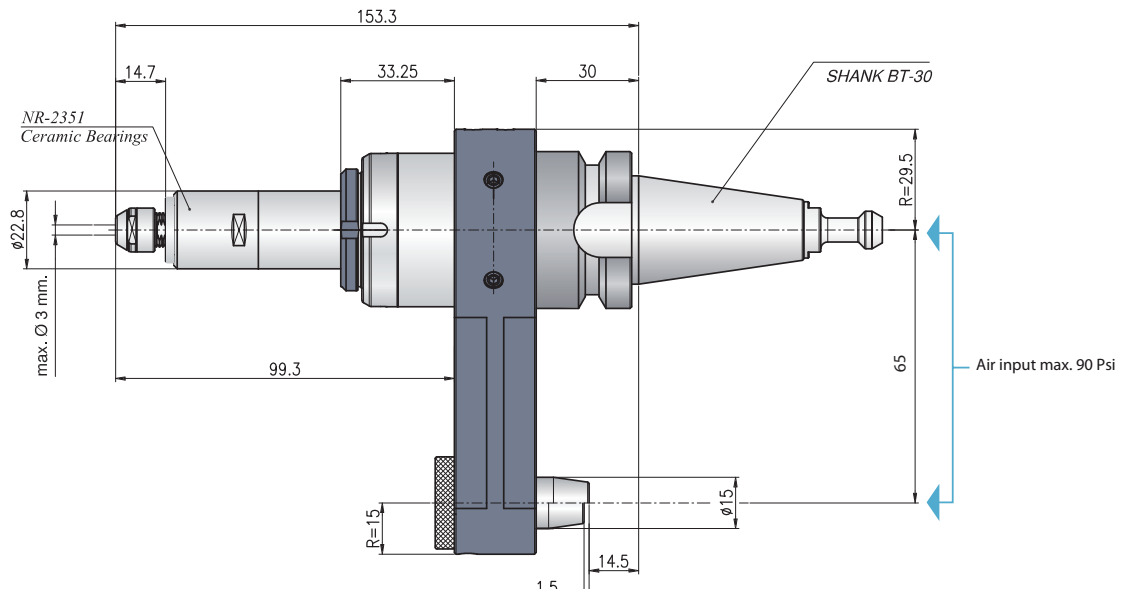
SLIMLINE

Spindle Driven

Max. RPM 20,000 RPM
 Max. Tool Capacity 3 mm
 ENGRAVING | LIGHT MILLING



TURBODRILL



TURBODRILL NR-2351

Compact Ultra High Speed | Air Driven
Axial model with air supplied through the
spindle or stop block

Max. RPM 58,000 RPM
Max. Tool Capacity 3 mm
ENGRAVING | LIGHT MILLING

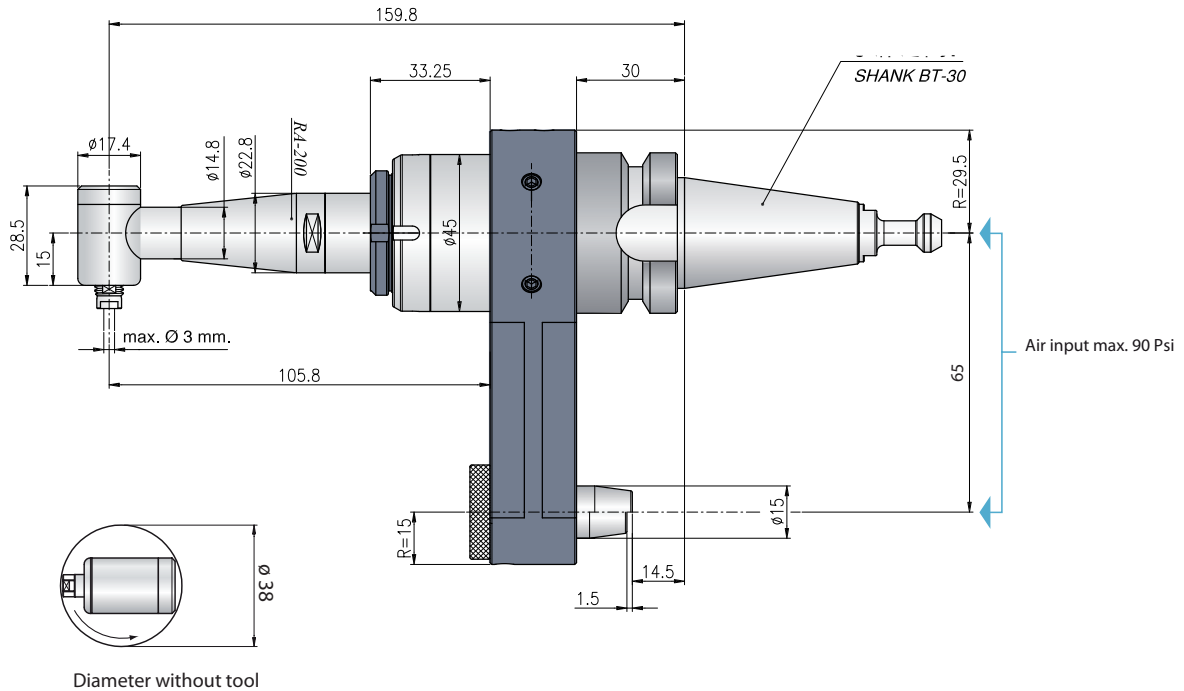
TECHNICAL DATA

NR-2351			
Tool RPM maximum	58,000	Reduction Ratio	--
NSK Output RPM	58,000	Air Pressure	90 psi max.
Air Motor	AM-600	Air Consumption	5.65 cfm
NSK Output Tool		Weight	4.1 lbs
Power	0.10 HP	Collet	CHK ϕ 3

Included with Tool: Storage Case • Wrenches •
Grease • Instruction Manual



TURBODRILL



TECHNICAL DATA

TD-RA-200			
Tool RPM maximum	30,000	Reduction Ratio	1/1.5
NSK Output RPM	20,000	Air Pressure	90 psi max.
Air Motor	AM-310	Air Consumption	7.98 cfm
NSK Output Tool	RA-200	Weight	4.1 lbs
Power	0.14 HP	Collet	CHS ϕ 3

Included with Tool: Storage Case • Wrenches • Grease • Instruction Manual

TURBODRILL TD-RA-200

Compact Ultra High Speed
Air Driven

Axial model with air supplied
through the spindle or stop block

Max. RPM 30,000 RPM
Max. Tool Capacity 3 mm
ENGRAVING | LIGHT MILLING



ACCESSORIES

COLLETS

CHS (for TD-RA-200)



Model	Inside Diameter (mm)
GP-59027-00	0.8
GP-59028-00	0.9
GP-59029-00	1.0
GP-59030-00	1.1
GP-59031-00	1.2
GP-59032-00	1.3
GP-59033-00	1.4
GP-59034-00	1.5
GP-59012-00	1.6
GP-59035-00	1.7
GP-59036-00	1.8
GP-59037-00	1.9
GP-59016-00	2.0
GP-59038-00	2.1
GP-59039-00	2.2
GP-59040-00	2.3
GP-59041-00	2.35
GP-59042-00	2.4
GP-59013-00	2.5
GP-59043-00	2.6
GP-59044-00	2.7
GP-59045-00	2.8
GP-59046-00	2.9
GP-59009-00	3.0
GP-59011-00	3.175

CHC (for IC-300, KC-300)



Model	Inside Diameter (mm)
GP-59021-00	1.6
GP-59024-00	2.35
GP-59015-00	3.0
GP-59010-00	3.175

COLLETS

CHM (for TDS-NR-601 • TD-NR-601/601-30)

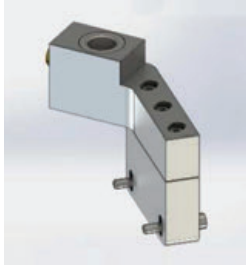


Model	Inside Diameter (mm)
GP-59073-00	0.3
GP-59074-00	0.4
GP-59075-00	0.5
GP-59076-00	0.6
GP-59077-00	0.7
GP-59078-00	0.8
GP-59079-00	0.9
GP-59080-00	1.0
GP-59081-00	1.1
GP-59082-00	1.2
GP-59083-00	1.3
GP-59084-00	1.4
GP-59085-00	1.5
GP-59086-00	1.6
GP-59087-00	1.7
GP-59088-00	1.8
GP-59089-00	1.9
GP-59090-00	2.0
GP-59091-00	2.1
GP-59092-00	2.2
GP-59093-00	2.3
GP-59094-00	2.35
GP-59095-00	2.4
GP-59096-00	2.5
GP-59097-00	2.6
GP-59098-00	2.7
GP-59099-00	2.8
GP-59100-00	2.9
GP-59101-00	3.0
GP-59102-00	3.175

MINILINE STOP BLOCK



BROTHER TC-32



I	80
P	30

BROTHER S2D



I	80
P	24

BROTHER S500 S700 S1000



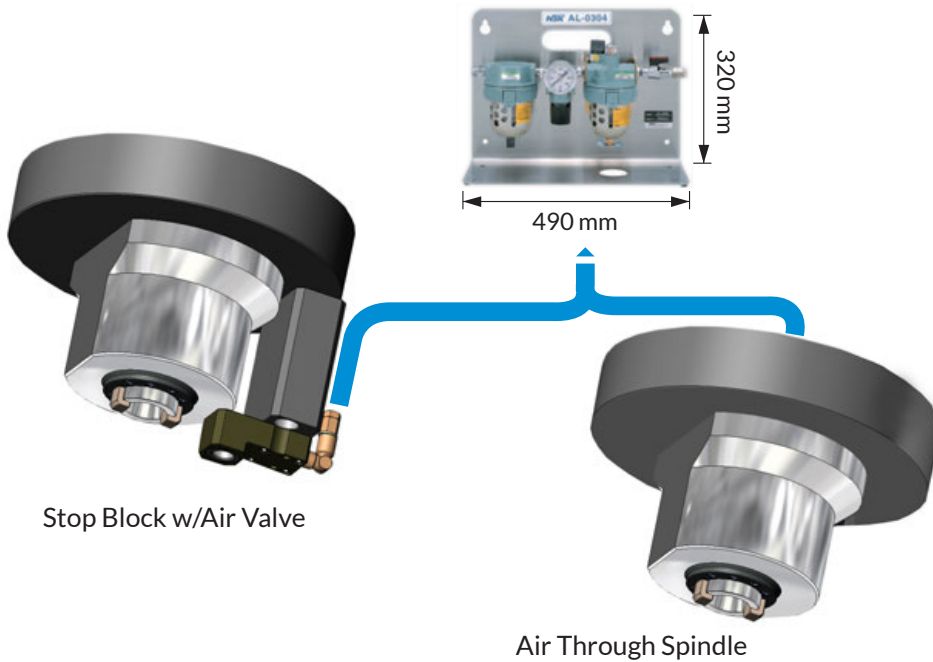
I	80
P	25,75

BROTHER R450X1



I	50
P	24

AIR LINE KIT *For Turbodrill only*





Brother Miniline 19.0 1/8/19

Tel: 1.800.249.5662
Fax: 860.623.4132

info@komaprecision.com
www.komaprecision.com

20 Thompson Road
East Windsor, CT 06088

