

# The Classic Bully



# The Bully (Old School)



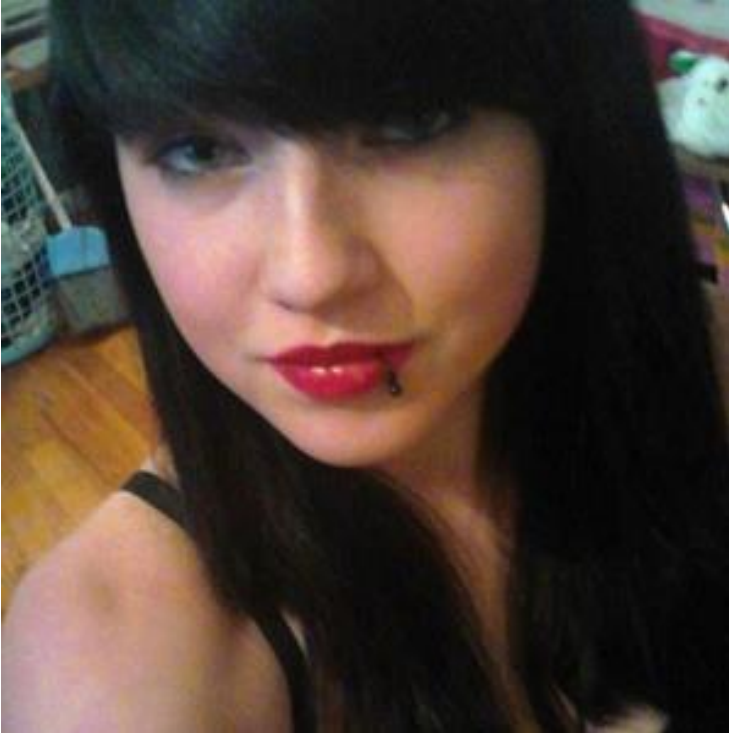
For the  $\succ_{\diamond}$  of it, he strikes *fear*

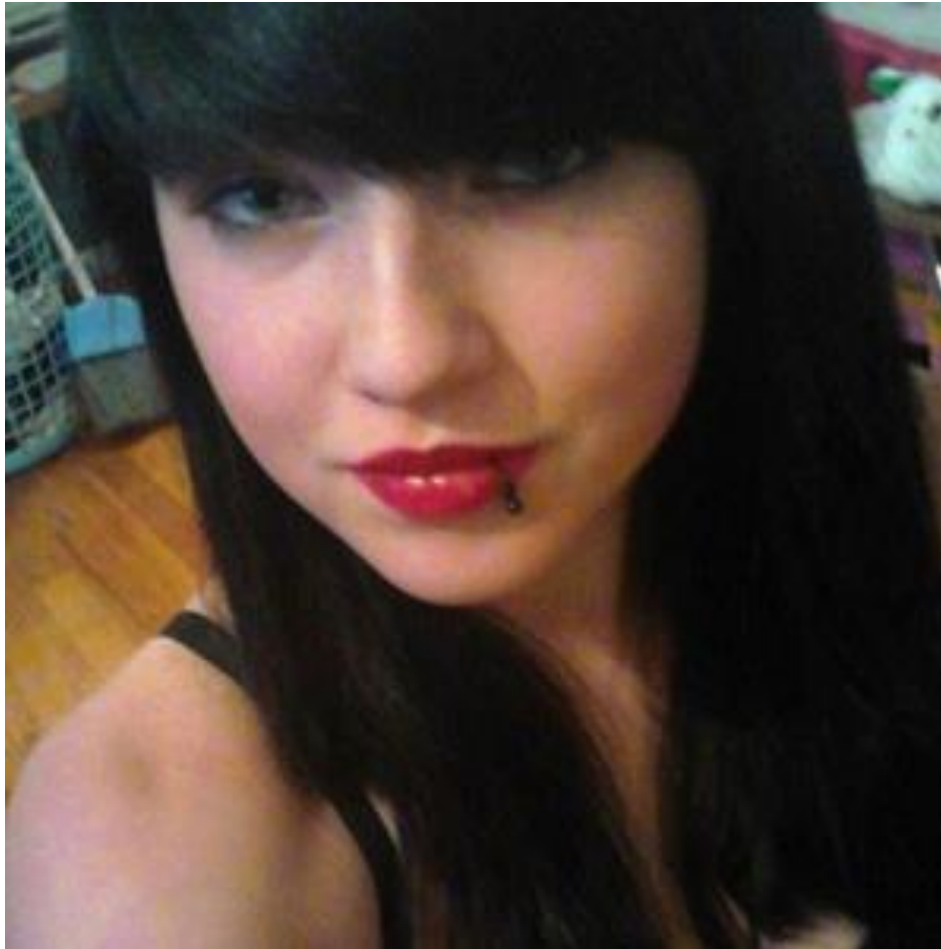


He's easy enough to spot,  
obvious enough when near.



(New School)  
Which one is the **Bully** here?





?



?



*He* is not texting a friend



and neither are *they*.

## Bullying

CT Public Act 11-232, An Act Concerning the Strengthening of School Bullying Laws, was signed into law in 2011. **The new legislation takes comprehensive steps to prevent bullying and ensure every child the right to learn in public school without fear of teasing, humiliation or assault.**

**Bullying** is when a student makes fun of, threatens, or embarrasses another student (more than one time) with the intent to ridicule, harass, or intimidate that student. **The new law prohibits bullying which occurs outside of the school setting as well.** It can be done in writing, orally, or through electronic communication. Bullying may occur at school, on the bus, at a school activity, online, or through a text message.

**The law says that schools must investigate any reports of bullying, even if the report is anonymous.**

**Consequences for bullying can include:**

- Detentions
- Suspensions (in or out of school)
- Expulsion
- Referral to Police

## Bullying

CT Public Act 11-232, An Act Concerning the Strengthening of School Bullying Laws, was signed into law in 2011. **The new legislation takes comprehensive steps to prevent bullying and ensure every child the right to learn in public school without fear of teasing, humiliation or assault.**

**Bullying** is when a student makes fun of, threatens, or embarrasses another student (more than one time) with the intent to ridicule, harass, or intimidate that student. **The new law prohibits bullying which occurs outside of the school setting as well.** It can be done in writing, orally, or through electronic communication. Bullying may occur at school, on the bus, at a school activity, online, or through a text message.

**The law says that schools must investigate any reports of bullying, even if the report is anonymous.**

**Consequences for bullying can include:**

- Detentions
- Suspensions (in or out of school)
- Expulsion
- Referral to Police

# Can't read the fine print?



Know this much---

“Bullying”

means the repeated use  
by one or more students  
of a written, verbal

or electronic communication,  
such as cyberbullying,

or a physical act or gesture directed  
at another student attending school  
in the same district that:

1. causes physical or emotional harm to such student or damage to such student's property;
2. places such student in reasonable fear of harm to himself or herself, or of damage to his or her property;
3. creates a hostile environment at school for such student;
4. infringes on the rights of such student at school; or
5. substantially disrupts the education process or the orderly operation of a school.

Bullying occurs in or outside of the school setting.



In the halls

In the cafeteria





On the way to school

On the bus



At a school-sponsored activity



Or in





# SPS Safe School Climate Plan Leadership

Safe School Climate Plan Coordinators  
(district level)

Grades 6-12

Chris Palmieri

Grades preK-5

Marilyn Kahl

work with the Superintendent, the Board,  
and Safe School Climate Specialists.



Safe School Climate Specialist

Principal or designee

investigates or supervises reported acts of bullying.

# Your Role?



School employees who witness acts of bullying or receive reports of bullying must

- orally notify the SHS Safe School Climate Specialist – Principal Brian Stranieri (or another administrator if unavailable) no later than one (1) school day and
- File a written report not later than two (2) days after the oral report.

\*Report forms are available from the Principal's Secretary

The heading of the district form to be completed

## REPORT OF SUSPECTED BULLYING BEHAVIORS

Complaint Filed Against	Target(s)
Date of Incident	Person Completing Report
Location/Time	Relationship to Target
School	Today's Date

## Form has three sections

- Description of specific behavior reported (i.e., incident, participants, background, relevant dates, times, places)
- List of witnesses- if witnesses are not district students or staff, attach contact information.
- Identify any previous incidents (i.e., specific behavior, dates, location, and to whom report was made).

*For more information:*

- ❑ Refer to the SPS web site-BOE Policies, Series 5000, Policy 5130.
- ❑ Chris Palmieri, Assistant Principal, DePaolo Middle School  
([cpalmieri@southingtonschools.org](mailto:cpalmieri@southingtonschools.org))
- ❑ Marilyn Kahl, Principal, Kelley Elementary School ([mkahl@southingtonschools.org](mailto:mkahl@southingtonschools.org))



# Please Take This Quiz

## (It is mandatory)



Successful completion of this mandatory survey will demonstrate that you have reviewed the training material and are aware of your responsibilities. Incorrect responses may result in the need for additional individual training.

<https://goo.gl/forms/KYrXbDCkrxcTGUtf1>

You can copy/paste this link into your browser or click on it within the slide show when playing