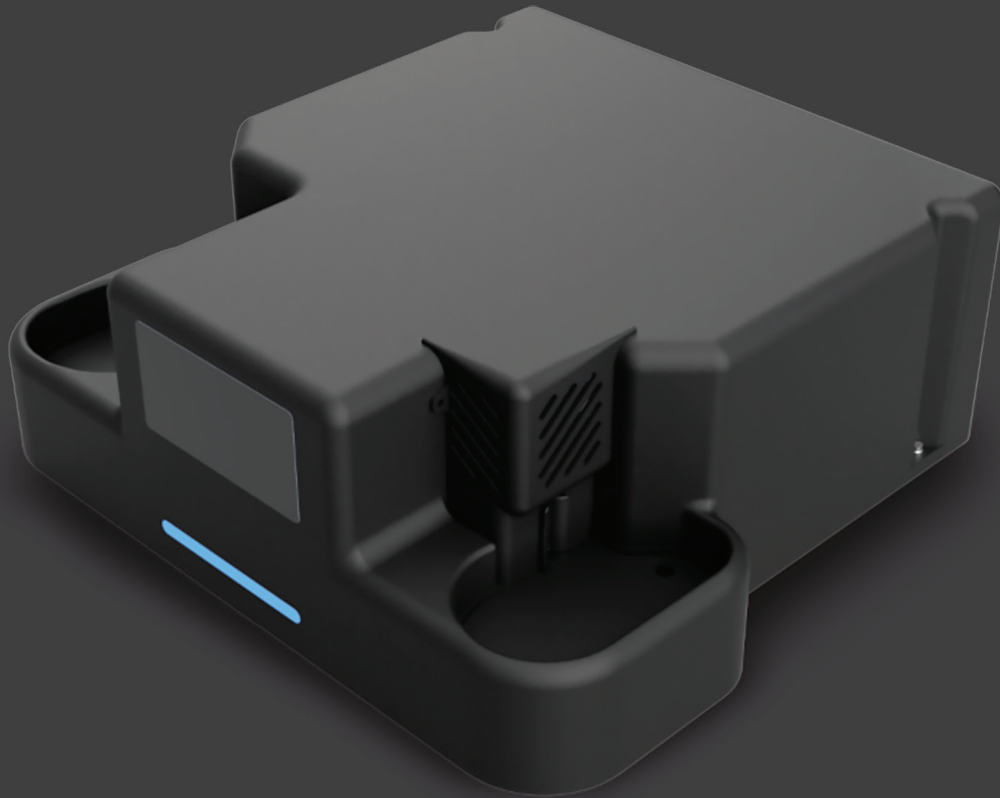


# Scanner Aura 35

An automatic 35mm scanner for laboratories and image professionals.

The Aura 35 is a brand-new scanner for the professional market, the first new model to be launched in at least a decade. Many existing products are more than 30-years-old, making servicing and maintenance increasingly challenging as spare parts become scarce.



## Speed

**Workflow adapted to laboratories and large volumes of archiving.**

- 60 to 80 times faster scans compared to existing devices at similar resolution
- Reduces human intervention dramatically
- After quality control, the files can be sent automatically to customers with a modern cloud service

## Quality

**Powerful scan and image enhancement.**

- 4,000 dpi
- Antistatic ionizing brush at film insertion
- New and innovative digital dust removal
- Powerful color management to match customers need

## Reliability

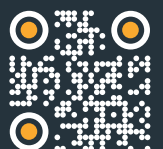
**A sturdy scanner for an intensive daily use.**

- Use of standard components simplifying maintenance
- Hardware scalability
- Continuous software updates and improvements
- Replacement within 48-hours in the event of a breakdown



+44 (0) 1480 472233  
info@capix.com  
www.capix.com

Unit 1, Woodbine Farm,  
Oundle Road, Lutton,  
Northamptonshire, PE8 5ND, UK



# Scanner Aura 35

An automatic 35mm scanner for laboratories and image professionals.

## Scan a large volume of film quickly with outstanding quality.

AURA 35 was born from the observation of the constantly increasing demand for digitization (the analogue market has grown by 7% annually for 5 years), the lack of a modern scanner suitable for intensive high-quality use and most existing scanners being operated far beyond their expected end-of-life for lack of an alternative.

A team of engineers carried out meticulous work to achieve the lasting solution that professionals were hoping for. The AURA 35 has been designed after identifying the qualitative and quantitative needs of laboratories, the improvements that can help them in their daily work, customer expectations and to minimize its impact on the environment throughout its cycle of life.



## Technical specification

|                      |   |
|----------------------|---|
| <b>Resolution</b>    | 4150 optical DPI, 4000px on short side, 24MP slot for 24x35. Can downsample from HD capture for lower resolutions with excellent quality                            |
| <b>Types of film</b> | 35mm film. Colour and B&W negative, colour and B&W positive.<br>Strip scan from 4 views   |
| <b>Dusting</b>       | Mechanics: Integrated Ionizing brushes<br>Software: Dark field and AI, compatible with color AND b&w film. Quadlinear CMOS sensor of 4096 pixels, 12-bit conversion |
| <b>Sensor</b>        | RGB + Infrared without interpolation  |
| <b>Optical</b>       | Apochromatic industrial optics, optimized for reproduction  |
| <b>Light source</b>  | Red, Green, Blue and Infrared LED backlighting. Visible dark field lighting for dust removal. Front lighting to read tracking codes, twin-checks, etc.              |
| <b>Scanning time</b> | 1 second per frame  |

