

MOTION CONTROL SOLUTIONS
FOR **SPACE APPLICATIONS**



WHEN
EXCEPTIONAL PERFORMANCE
MATTERS

PRODUCTS OVERVIEW

Description

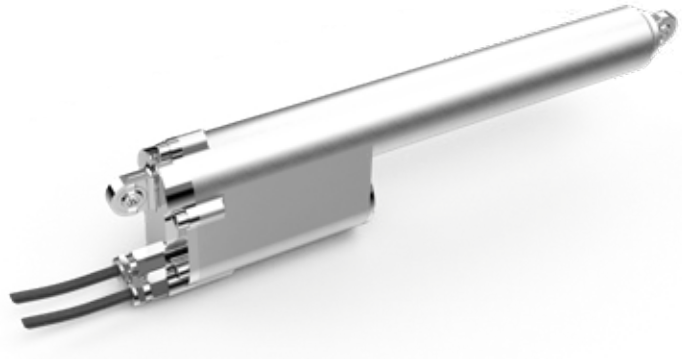
With over a hundred and twenty years in the business, our **motion control equipment** has been used in applications that operate deep underground and in the depths of outer space. We've seen it all: Hypersonic motors capable of operating at 500 °C to highly accurate position sensors and flight-critical actuators. Customising **motors, position sensors, and actuators** to meet the most extreme requirements is where we excel, and for our next project, we want to help you to reach for the stars.

ACTUATORS

Pictured here is an example of one of our **Thrust Vector Actuators**. Working in pairs, their function is to direct a rocket nozzle's thrust to manoeuvre the rocket on its ascent. Our original designs were used primarily for missiles, and in recent years we've re-purposed our range to provide thrust vector actuators for commercial space launchers.

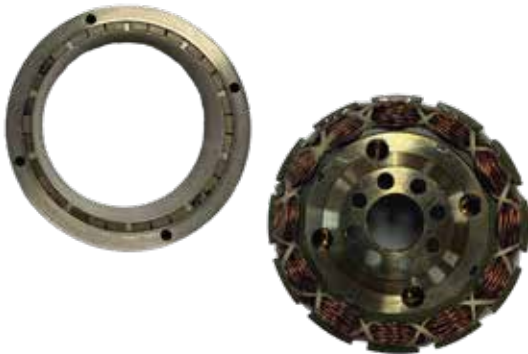


Copyright © Latitude 2024



MOTORS

Our torque motors are used for many purposes and in environments. This example operates in space and spins a miniature flywheel to translate angular rotation into torque which in turn is used to control the attitude of an orbiting spacecraft without requiring thrusters or fuel.



111 Windmill Road, Sunbury on Thames, TW16 7EF
United Kingdom

 **AIRTECHNOLOGY** /  **AMETEK**[®]

