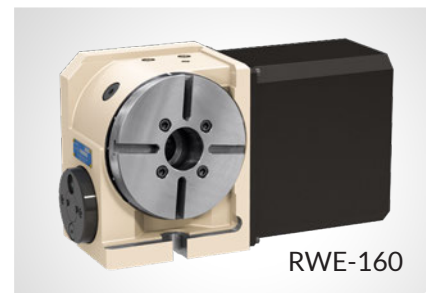


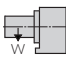

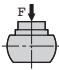
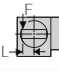
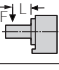
RWE-160, 200

COMPACT • MASSIVE CLAMP TORQUE

The RWE Series tables' offer speeds of 69.4 RPM and indexing accuracies ranging from 10 to 12.5 arc seconds. These compact, high-speed, high-quality RWE Series tables offer economy line pricing while retaining high clamp torque and increased production performance.



RWE-160

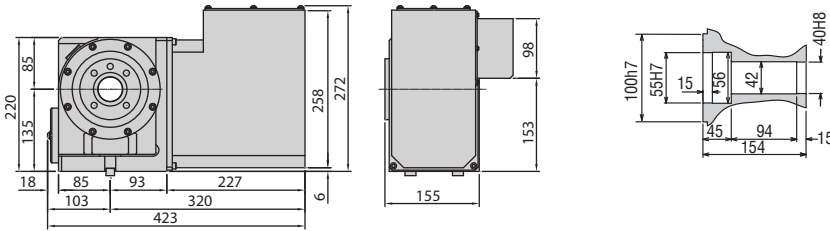
Table Model		RWE-160	RWE-200
Versions available		R, L	R, L
Spindle outer diameter	mm	100h7	120h7
Table diameter (optional)	mm	(160, 200)	(200, 250)
Center height	mm	135	160
Center bore	Nose Diameter	mm	55H7
	Thru Diameter	mm	40
Table T-slot width (with faceplate)		(12H8)	(12H8)
Guide block width		14h7	18h7
Servo motor*		Alpha 2i	Alpha 4i
Maximum motor speed	rpm	5,000	5,000
Speed reduction ratio		1/72	1/72
Maximum table speed	rpm	69.4	69.4
Inertia converted into motor shaft	$\times 10^{-3}\text{kg}\cdot\text{m}^2$.09	.17
Clamp system		Pneumatic Disc Clamp	
Clamp torque @72psi	Nm (ft. lbs.)	250 (180)	400 (295)
Indexing accuracy	arc sec.	± 12.5	± 10
Net Weight	kg (lbs.)	40 (88)	61 (135)
Allowable wheel torque	Nm (ft. lbs.)	206 (152)	288 (212)
Allowable work inertia	$\text{kg}\cdot\text{m}^2$.64	1.25
Allowable work weight [with tail-stock]	 kg (lbs)	100 (220) [200 (441)]	125 (275) [250 (551)]
	 kg (lbs)	150/330	250/550
Allowable load when table clamped	 Nm (lbf)	10,800 (7,960)	14,400 (10,613)
	 Nm (ft. lbs.)	500 (369)	800 (590)
	 Nm (ft. lbs.)	780 (575)	1,900 (1,400)

* Other motors & RPM available
Specifications subject to change without notice

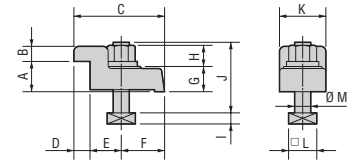
Dimensions

Drawings not to scale • Dimensions = mm

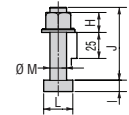
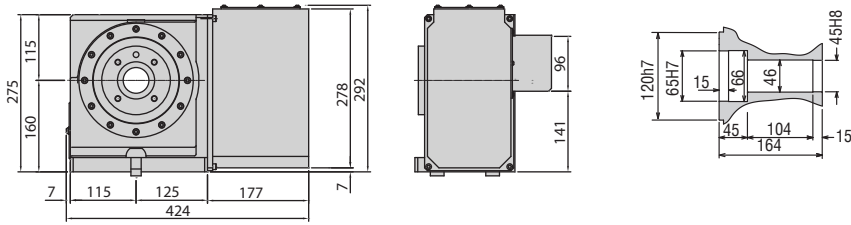
RWE-160



Type I



RWE-200



The dimensions above are for tables with a FANUC servo motor. Other motors available (dimensions may increase).

Clamping Block and Bolt

Dimensions = mm

	Type	Q'ty	T-Slot Width	A	B	C	D	E	F	G	H	I	J	K	L	M
RWE-160	-	2	14	-	-	-	-	-	-	-	17	8	60	-	23	12
RWE-200	-	2	18	-	-	-	-	-	-	-	21	11	65	-	28	16
RWE-250	I	4	18	25	12	80	12	33	35	22	21	11	65	40	28	16
RWE-320	I	4	18	30	15	90	16	31	43	25	21	11	70	46	28	16

Note 1: When using a machine with a T-slot pitch other than the above, use suitable clamping blocks and bolts that are available on the market, or order custom-made ones from KOMA (opt.)

Note 2: Clamping blocks are not included in RWE-160 and RWE-200.

Options & Accessories

TPC NC Controller	p.68
Chucks	p.79
Tailstock	p.81
Support Spindle	p.81
Face Plate	p.83
Encoder / Scale	p.84
Pull Stud Device	p.85
Rotary Joint	p.85
PVC or Steel Cables	p.86