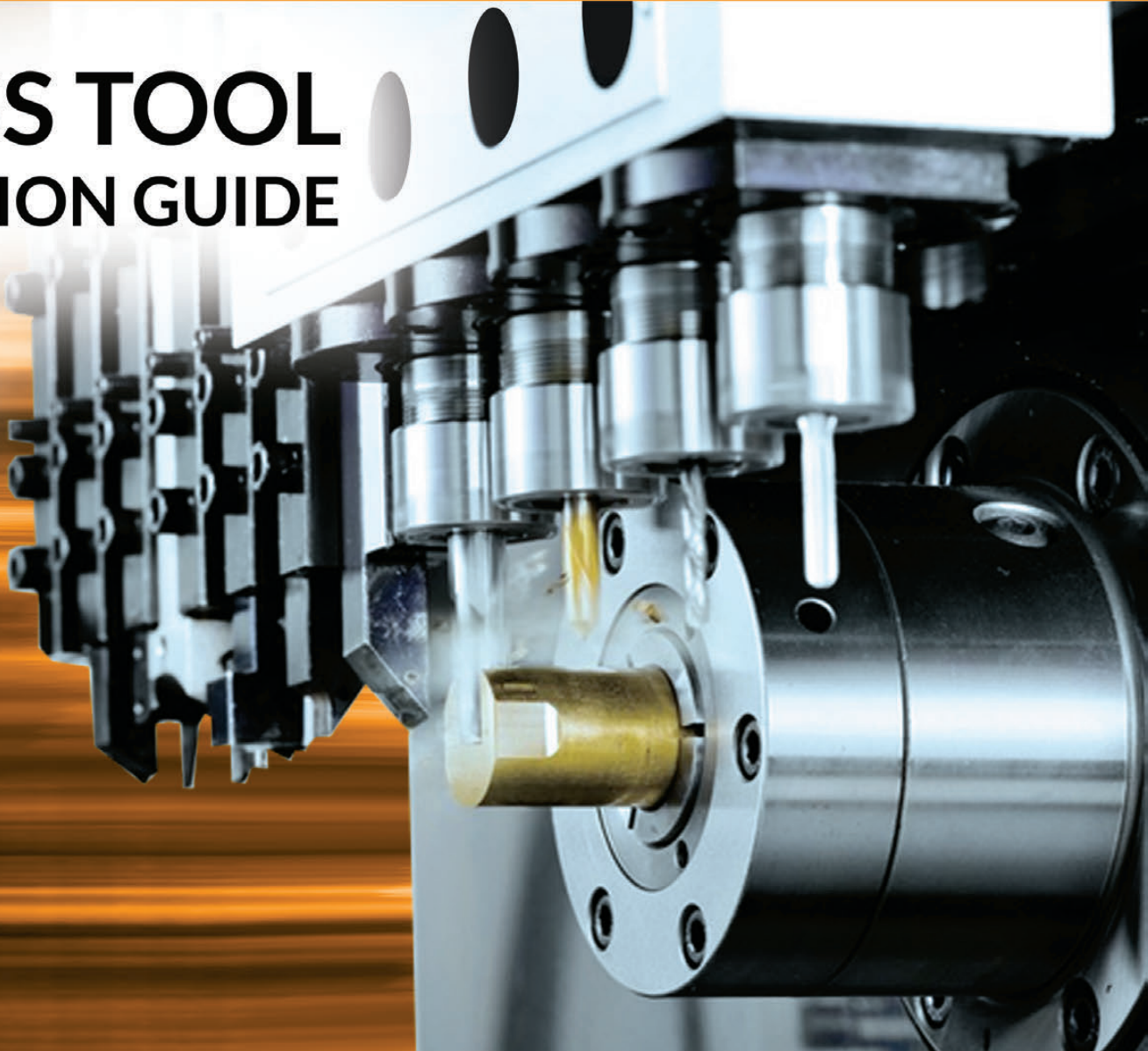


# KOMA

## SWISS TOOL SELECTION GUIDE



**GEN MILL | GEN TURN™**  
by Ganesh

# ABOUT

## KOMA PRECISION

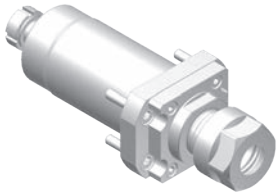
For over thirty years Koma Precision has been the foremost source for the finest the world has to offer in machine tool Productivity Innovation.

With over 30,000 rotary table installations, Koma is the largest distributor of Tsudakoma NC rotary tables and indexers in the world. With over 12,000 angle heads and live tools installed, Koma is the world's largest supplier for Alberti - the originator and the foremost innovator of productivity tooling.



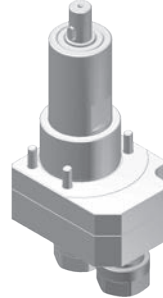
# GANESH SWISS TOOLING

## CB25M/CB32M/CB36M TOOLING FOR CROSS TOOL POST



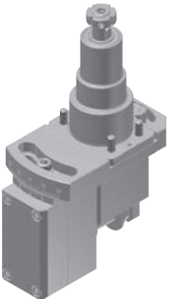
**CCB121000**  
Cross drilling/milling unit

RATIO 1 : 1  
RPM(MAX) 6000  
TOOL CLAMPING ER20A



**CCB162000**  
2 spindle cross drilling/milling unit

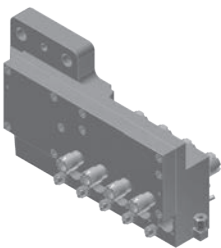
RATIO 1 : 1  
RPM(MAX) 6000  
TOOL CLAMPING ER16A



**CCB130100**  
Gear hobbing unit

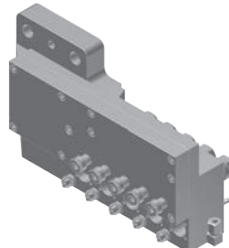
RATIO 1 : 1  
RPM(MAX) 6000  
CUTTER SHANK Ø10mm  
CUTTER OD(MAX) Ø30mm  
CUTTER LENGTH 20mm  
ANGLE ADJUSTMENT ±20°

## CB25M/CB32M/CB36M TOOLING FOR FRONT WORKING TOOL POST



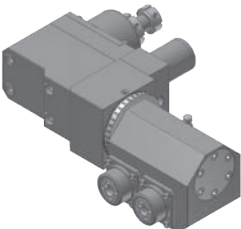
**CCB562400**  
Front working tool base  
(4 Live tool + 5 Fixed tool)

RATIO 1 : 2  
RPM(MAX) 6000  
TOOL CLAMPING  
Front side : ER20M  
Back side : ER16M  
DRILL SLEEVE FOR FIXED TOOL PORT :  
KDA2502060A (Single)  
KDA2502100A (Double)  
TOOL PORT / FIXED TOOL : T21~T25  
LIVE TOOL : T26~T29



**CCB566500**  
Front working tool base  
(5 Live tool + 5 Fixed tool)

RATIO 1 : 2  
RPM(MAX) 6000  
TOOL CLAMPING  
Front side : ER16A  
Back side : ER11A  
DRILL SLEEVE FOR FIXED TOOL PORT :  
KDA2502060A (Single)  
KDA2502100A (Double)  
TOOL PORT / FIXED TOOL : T21~T25  
LIVE TOOL : T26~T30

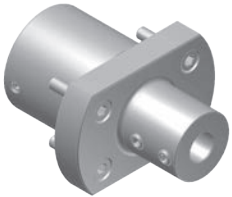


**CCB491200**  
2 spindle drilling/milling unit

RATIO 1 : 1  
RPM(MAX) 6000  
TOOL CLAMPING ER11  
ANGLE ADJUSTMENT ±180°  
REMARK Only available for 3 Live tool + 5 Fixed  
tool base

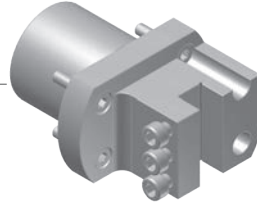
# GANESH SWISS TOOLING

## CB25M/CB32M/CB36M TOOLING FOR BACK TOOL POST



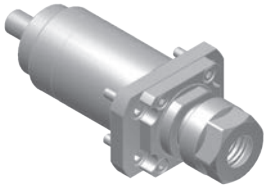
**CCB601120**  
Boring bar sleeve

TOOL SHANK Ø42.0mm  
BORING BAR SHANK Ø12.0mm



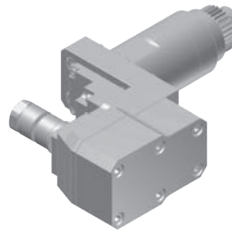
**CCB611120**  
Turning tool holder

TOOL SHANK Ø42.0mm  
BITE HOLDER SHANK 12x12mm



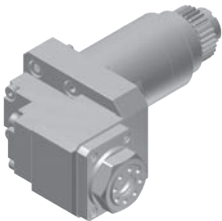
**CCB721000**  
Drilling/milling unit

RATIO 1:1  
RPM(MAX) 6000  
TOOL CLAMPING ER20A



**CCB730000**  
Slotting unit

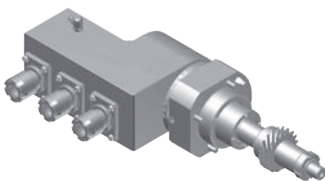
RATIO 1:0.75  
RPM(MAX) 3000  
SAW OD(MAX) Ø45mm  
SAW ARBOR SHANK Ø12.7mm



**CCB761000**  
Cross drilling/milling unit

RATIO 1:1  
RPM(MAX) 3000  
TOOL CLAMPING ER16

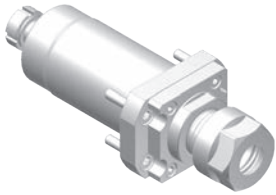
## CY2-52MB TOOLING FOR BACK WORKING TOOL POST



**CCY496300**  
3 spindle drilling/milling unit

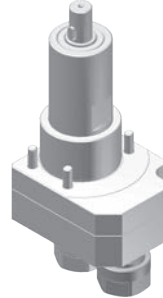
RATIO 1:1  
RPM(MAX) 6000  
TOOL CLAMPING ER16M  
ANGLE ADJUSTMENT ±90°

## NCY25M/NCY32M/NCY36M TOOLING FOR CROSS TOOL POST



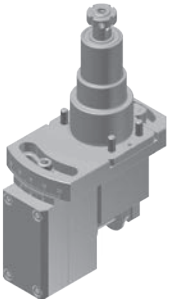
**CCB121000**  
Cross drilling/milling unit

RATIO 1: 1  
RPM(MAX) 6000  
TOOL CLAMPING ER20A



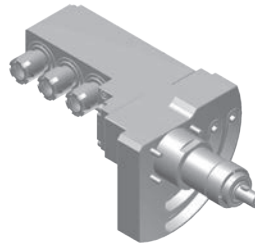
**CCB162000**  
2 spindle cross drilling/ milling unit

RATIO 1: 1  
RPM(MAX) 6000  
TOOL CLAMPING ER16A



**CCB130100**  
Gear hobbing unit

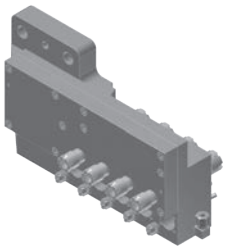
RATIO 1: 1  
RPM(MAX) 6000  
CUTTER SHANK Ø10mm  
CUTTER OD(MAX) Ø30mm  
CUTTER LENGTH 20mm  
ANGLE ADJUSTMENT ±20°



**CCY463000**  
3 spindle drilling/milling unit

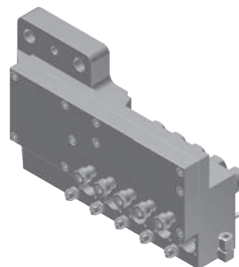
RATIO 1: 1  
RPM(MAX) 3000  
TOOL CLAMPING ER16M  
ANGLE ADJUSTMENT 0~90°

## NCY25M/NCY32M/NCY36M TOOLING FOR FRONT WORKING TOOL POST



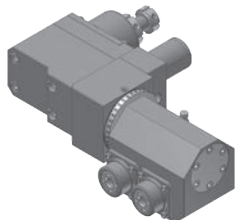
**CCB562400**  
Front working tool base  
(4 Live tool + 5 Fixed tool)

RATIO 1: 2  
RPM(MAX) 6000  
TOOL CLAMPING  
Front side : ER20M  
Back side : ER16M  
DRILL SLEEVE FOR FIXED TOOL PORT :  
KDA2502060A (Single)  
KDA2502100A (Double)  
TOOL PORT / FIXED TOOL : T21~T25  
LIVE TOOL : T26~T29



**CCB566500**  
Front working tool base  
(5 Live tool + 5 Fixed tool)

RATIO 1: 2  
RPM(MAX) 6000  
TOOL CLAMPING  
Front side : ER16A  
Back side : ER11A  
DRILL SLEEVE FOR FIXED TOOL PORT :  
KDA2502060A (Single)  
KDA2502100A (Double)  
TOOL PORT / FIXED TOOL : T21~T25  
LIVE TOOL : T26~T30



**CCB491200**  
2 spindle drilling/milling unit

RATIO 1: 1  
RPM(MAX) 6000  
TOOL CLAMPING ER11  
ANGLE ADJUSTMENT ±180°  
REMARK Only available for 3 Live tool + 5  
Fixed tool base

Tel: 1.800.249.5662  
Fax: 860.623.4132

info@komaprecision.com  
www.komaprecision.com

20 Thompson Road  
East Windsor, CT 06088

