

# KOMMA



**LEADER** plus

## LEADER plus CONSTRUCTION

Thermally stabilized steel structure
Tempered steel, high precision sleeve with calibration spheres
Dimensions= 44: 1,080mm L x 626mm D x 950mm H
45: 1,080mm L x 626mm D x 1,050mm H
46: 1,080mm L x 626mm D x 1,150mm H
Weight= 44: 136Kg (299 lbs.) / 45: 142Kg (313 lbs.) / 46: 148Kg (326 lbs.)

## AXIS MOVEMENT

X Axis (Diameter) = 400mm / 15.75in
Z Axis = 44: 400mm (15.7 in.) / 45: 500mm (19.6 in.) / 46: 600mm (23.6 in.)
Resolution X & Z Axis - 1 µm
Pneumatic axis lock

## SPINDLE

Interchangeable tool sleeve
Tool sleeve rotation brake
Fine micrometric adjustments
Glass optical scales, SP class precision linear guides
Concentricity - 2 µm
Maximum Tool Weight 40kg / 88 lbs.

## OPERATING SYSTEM

Vertical Full HD 22" Monitor
CVS, user friendly, multilingual software
Windows Operating System with data back-up system
Storage of up to 200 machine origins and 40,000 tools
7 port USB hub
1 Network LAN port

## CAPABILITIES

Measure - Line
Measure - Angle/Max. Angle
Measure - Radius/Max. Radius
Measure - Protractor
Measure - Tool Profile
Measure - Set Radius
Measure - Cog
Measure - Multicutter
Measurements of GHOST, Multitool & Angular heads with standard Tool Pack software

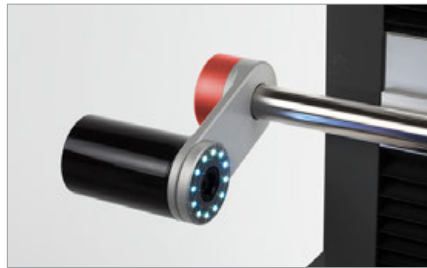
## VISION SYSTEM

HD Camera
40x Magnification
7 x 7 field of view
Cool light LED ring illuminator

## OPTIONS

Label Printer
Presetter support table C231
Tool locking mechanism interlock system
DXF Software - Import/Export of tool profiles
Other connection systems such as Balluff®

## FEATURES



## HIGH PERFORMANCE

Powerful and easy to use, the Leader Plus Presetter is a sophisticated machine for tool analysis. With many advanced features and the ability to manage your tooling library, the Leader Plus presetter is the ultimate in tool presetting.

## CONSTANT GEOMETRY TECHNOLOGY

Material choice is at the heart of Constant Geometry Technology. Using only like materials with identical thermal expansion coefficients, we can guarantee constant presetter geometry in all working conditions.

## ERGONOMICALLY DESIGNED CONTROLS

With the operator in mind, the Leader Plus presetter was designed with an ergonomic micrometric hand wheel allowing for easy fine adjustment of the presetter's optics. A "zero gravity" support column allows smooth, effortless movement of the camera optics in both X and Z. Easy to use interchangeable tool pots allows the presetter to be quickly switched to accommodate any type of tooling.

## SOFTWARE

Simple and intuitive, the CVS software is easy to use. All functions are easy to find and shown using simple, graphical icons. It's never been easier or faster to set your tooling; create tool lists and tool offset files in minutes. The Leader Plus allows up to 200 machine origins and tool lists up to 200 tools. The optional DXF function allows the operator to quickly compare tool profiles or create and export a tool profile. The easy to use post-processing system allows the presetter to communicate with over 40 CNC control types.

## OVERSIZED HD DISPLAY

Easy to use software combined with a 22" HD monitor provides the operator with full control. Easily select any of the presetter's measuring options with one click while still viewing the edge of the cutting tool.

## SLIDWAYS / OPTICAL SCALES

The Leader Plus is built with dual SP Precision guides and preloaded recirculating bearings mounted to a stabilized steel base ground to 2 microns of planarity. 1-micron glass optical scales are used to ensure the highest accuracy of tool measurements.

# **LEADER** plus





Tel: 1.800.249.5662  
Fax: 860.623.4132

info@komaprecision.com  
www.komaprecision.com

20 Thompson Road  
East Windsor, CT 06088

