

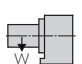
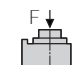
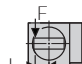
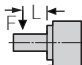
**RWA-161, 201, 251, 321R,B | RNCV-401R,B**

SUITABLE WHEN Y AXIS INTERFERENCE IS AN ISSUE

The RWA,B-Series tables position the servomotor at the rear of the table casting resulting in a compact footprint. The “B” series tables are suitable when “Y” axis interference is an issue. RWA,B-Series tables utilize a patent pending dual taper pneumatic clamping system which generates massive clamp torque. The RNCV-401R,B features powerful hydraulic clamping.



RWA-250R,B

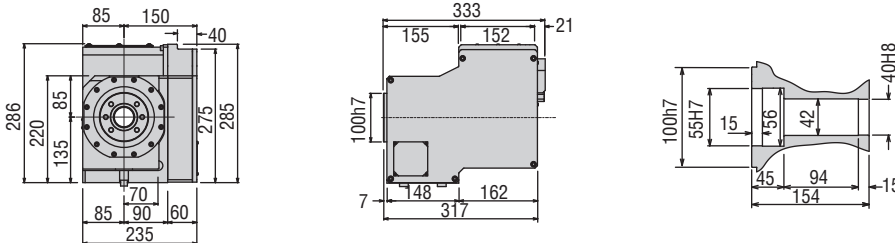
Table Model		RWA-161R,B	RWA-200R,B	RWA-250R,B	RWA-320R,B	RNCV-401R,B	
Spindle outer diameter	mm	100h7	120h7	140h7	180h7	-	
Table diameter (optional)	mm	(160, 200)	(200, 250)	250	320	400	
Center height	mm	135	160	160	210	255	
Center bore	Nose Diameter	mm	55H7	65H7	80H7	115H7	40H7
	Thru Diameter	mm	40	45	50	85	40
Table T-slot width (with face plate)		(12H8)	(12H8)	12H8	14H7	14H7	
Guide block width		14h7	18h7				
Servo motor (Fanuc)*		Alpha 2i	Alpha 4i	Alpha 8i	Alpha 8i	Alpha 12i	
Maximum motor speed	rpm	5,000	5,000	4,000	4,000	4,000	
Speed reduction ratio		1/72	1/72	1/90	1/120	1/180	
Maximum table speed	rpm	69.4	69.4	44.4	33.3	22.2	
Inertia converted into motor shaft	x 10 <sup>-3</sup> kg·m <sup>2</sup>	.56	.64	.97	.84	4.01	
Clamp system		Pneumatic Dual Taper				Hydraulic	
Clamp torque @72psi [500psi]	Nm (ft. lbs.)	500 (369)	800 (590)	1,000 (737)	1,500 (1,106)	[1,746 (1,287)]	
Indexing accuracy	arc sec.	±12.5	±10	±10	±10	±7.5	
Net Weight	kg (lbs.)	53 (117)	77 (169)	95 (209)	165 (363)	330 (726)	
Allowable wheel torque	Nm (ft. lbs.)	206 (152)	288 (212)	596 (439)	939 (692)	1,667 (1,228)	
Allowable work inertia	kg·m <sup>2</sup>	.64	1.25	1.95	4.48	9.7	
Allowable work weight	 kg (lbs) [w/ tailstock]	100 (220) [175 (385)]	125 (275) [250 (550)]	125 (275) [250 (550)]	175 (385) [375 (825)]	200 (440) [500 (1,100)]	
Allowable load when table clamped	 N (lbf)	10,800 (2,419)	14,400 (3,226)	14,400 (3,226)	24,800 (5,555)	39,200 (8,781)	
	 Nm (ft. lbs.)	500 (369)	800 (590)	1,000 (737)	1,500 (1,106)	1,764 (1,300)	
	 Nm (ft. lbs.)	780 (575)	1,900 (1,400)	1,900 (1,400)	4,700 (3,464)	2,450 (1,806)	

\* Other motors & RPM available  
 Specifications subject to change without notice

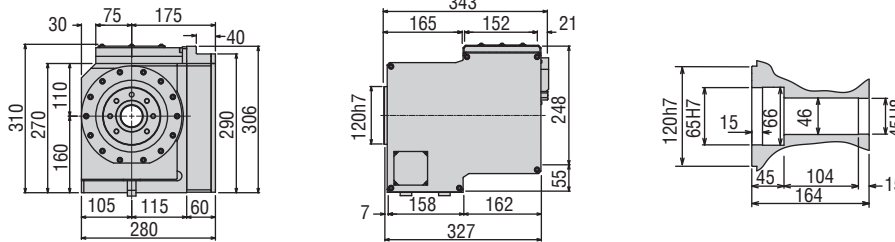
Dimensions

Drawings not to scale • Dimensions = mm

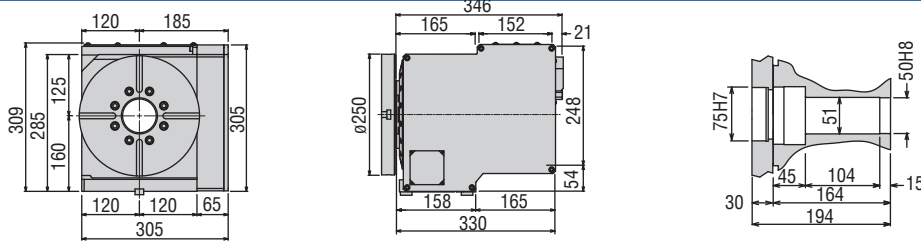
RWA-161R,B



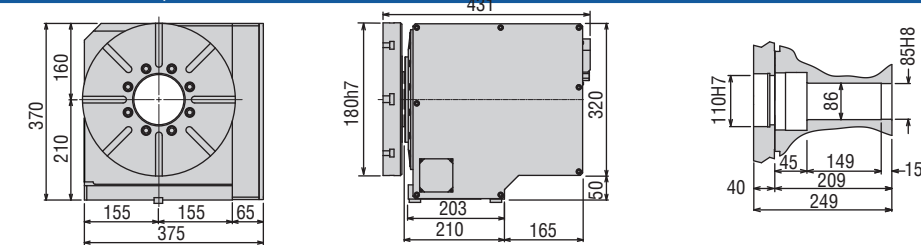
RWA-201R,B



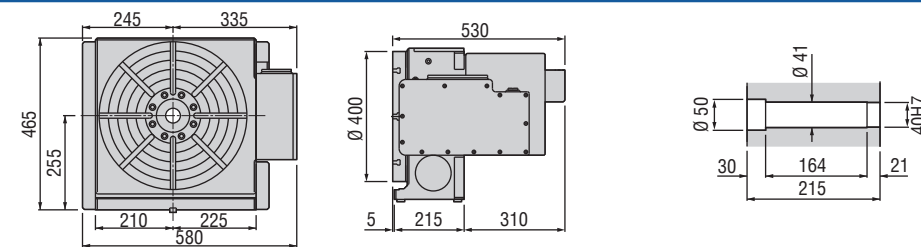
RWA-251R,B



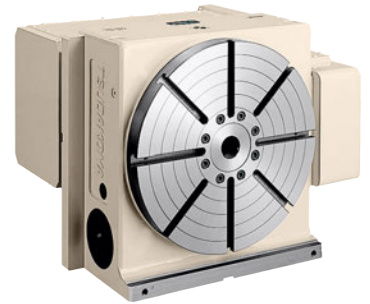
RWA-321R,B



RNCV-401R,B

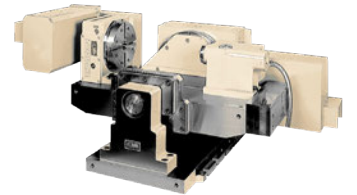


RNCV-401R,B



RT-22

This custom machining system combines (2) RNCV-401 rotary tables with (2) hydraulic tailstocks.



Options & Accessories

TPC NC Controller	p.68
Chucks	p.79
Tailstock	p.81
Support Spindle	p.81
Face Plate	p.83
PVC or Steel Cables	p.86

The dimensions above are for tables with a FANUC servo motor. Other motors available (dimensions may increase).

Clamping Block and Bolt

Dimensions = mm

	Type	Q'ty	T-Slot Width	A	B	C	D	E	F	G	H	I	J	K	L	M
RWA-161R,B	-	2	14	-	-	-	-	-	-	-	17	8	60	-	23	12
RWA-201R,B	-	2	18	-	-	-	-	-	-	-	21	11	65	-	28	16
RWA-251R,B	I	4	18	25	12	80	12	33	35	22	21	11	65	40	28	16
RWA-321R,B	I	4	18	30	15	90	16	31	43	25	21	11	70	46	28	16
RNCV-401R,B	I	4	18	30	15	90	16	31	43	25	21	11	70	46	28	16

Note 1: When using a machine with a T-slot pitch other than the above, use suitable clamping blocks and bolts that are available on the market, or order custom-made ones from KOMA (opt.)

Note 2: Clamping blocks are not included in RWA-160R,B and RWA-200R,B.

Type I

