

JEFFERSON 4-CAR GARAGE

Bickimer Homes



4
BEDS

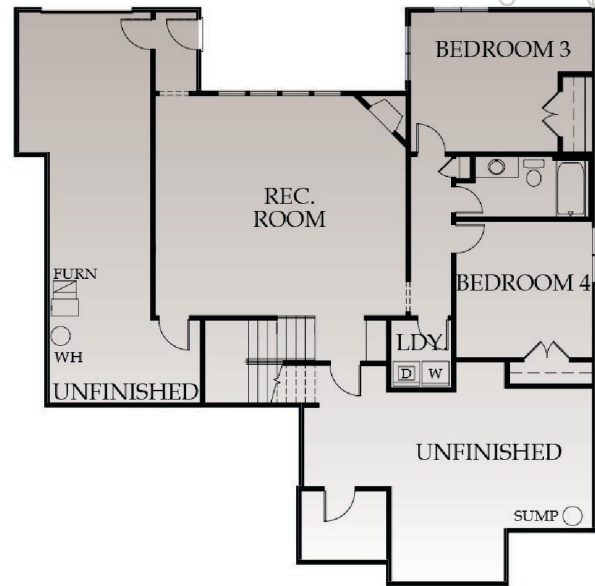
3
BATHS

3019
SQ. FT.

**CENTURY
FARMS**

REVERSE
1.5 STORY

NOW BUILDING ON
LOT 15



EXTERIOR:

- Foundation: 9' Foundation Walls, Walkup/Walkout
- Roof: Limited Lifetime Warranty Roof
- Front: Stucco and Stone per Elevation with LP Smart Trim
- Sides/Rear: LP Smart Siding and Trim, 5/50 Limited Warranty
- Landscaping: Custom Design Allowance with Bluegrass Sod, Irrigation System
- Doors: Insulated Garage Doors with Openers, Double Fiberglass Front Door
- Windows: Energy Efficient Low-E Windows
- Patio/Deck: Covered 12x18 Deck, Lower Level Patio

INTERIOR:**KITCHEN**

- o Painted Cabinets, Upgraded Metal Hood
- o Cabinets include Full Extension Drawer Guides, Pull-out Trash Can, and Spice Rack
- o Granite Tops
- o Granite Center Island
- o Walk-in Pantry
- o Under Cabinet Lighting
- o Stainless Steel Appliance Package
- o Custom White Oak Hardwood Floors

BATHS AND LAUNDRY

- o Large Laundry Room Conveniently Located by Master Suite
- o Tile Floors in Laundry and all Baths
- o Cultured Marble Tops in all Baths
- o Free Standing Tub, Frameless Shower Door and Upgraded Tops in Master Bath
- o Bonus Lower Level Laundry
- o Tile on all Shower and Tub Walls in Secondary Baths

GREAT ROOM

- o Gas Fireplace with Built-ins on Both Sides
- o Double Sliding Glass Doors
- o Custom White Oak Hardwood Floors

ENERGY EFFICIENT FEATURES

- o Engineered for Maximum Energy Efficiency
- o Independently Rated Resnet HERS Index Home
- o R-13 Wall Insulation with Grade 1 Verified Installation, R-49 Attic Insulation
- o 95% Lennox Furnace with Humidifier and 13 SEER AC
- o Energy Star Compliant Foam and Caulk Package

OTHER FEATURES

- o Built-In Boot Bench
- o Optional Study/2nd Bedroom on Main Floor with Hardwood Floors
- o Finished Lower Level with Bar and Wine Wall
- o Upgraded Stair Carpet and Upgraded Carpet in Master Bedroom
- o 50 Gallon Water Heater and Ice Maker Water Line
- o Large Base and Casing throughout Main Floor
- o Fireplace on Deck
- o Upgraded Brushed Nickel Plumbing Package
- o Stained Stair End Caps with Iron Spindles
- o Double Doors at Entry
- o Sump Pump
- o Knockdown Ceilings Throughout (minus Garage)
- o In House Warranty Program

