

HAMILTON

Bickimer Homes



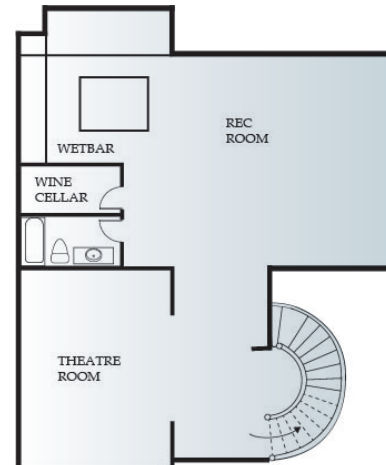
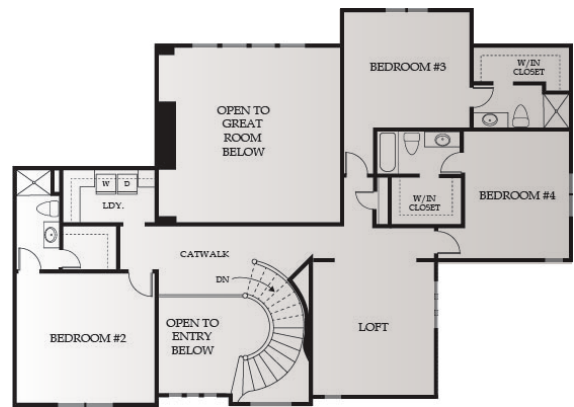
5
BEDS

5
BATHS

4000
SQ. FT.



1.5 STORY



EXTERIOR:

- Foundation: 9' Foundation Walls with Concrete Egress Window Well
- Roof: Limited Lifetime Warranty Roof
- Front: Stucco and Stone per Elevation with LP Smart Trim
- Sides and Rear: LP Smart Siding and Trim, 5/50 Limited Warranty
- Landscaping: Custom Design Allowance with Bluegrass Sod
- Doors: Insulated Garage Doors with Openers, Fiberglass Front Door
- Windows: Energy Efficient Low-E Windows
- Patio/Deck: Covered 14x21 Patio

INTERIOR:**KITCHEN**

- o Choice of Knotty Alder, Birch or Paint Grade Cabinets
- o Cabinets include Full Extension Drawer Guides, Pull-out Trash Can, and Spice Rack
- o Custom Mixed Width White Oak Hardwood Floors
- o Level 1 Granite
- o Granite Center Island
- o Walk-in Pantry
- o \$3600 Appliance Allowance

BATHS AND LAUNDRY

- o Large Main and Upper Level Laundry Rooms
- o Tile Floor in Laundry and all Baths
- o Cultured Marble Vanities in Baths
- o Every Bedroom has its own Private Vanity
- o Jetted Tub in Master Bath

GREAT ROOM

- o Two Story Ceiling
- o Direct Vent Fireplace
- o Custom Mixed Width White Oak Hardwood Floors

ENERGY EFFICIENT FEATURES

- o Engineered for Maximum Energy Efficiency
- o Independently Rated Resnet HERS Index Home
- o R-13 Wall Insulation with Grade 1 Verified Installation, R-49 Attic Insulation
- o 95% Lennox Furnace with Humidifier and 13 SEER AC
- o Energy Star Compliant Foam and Caulk Package

OTHER FEATURES

- o \$4000 Light Fixture Allowance
- o Built-in Boot Bench
- o Master Closet with 3 Tier Hanging and Built-in Shoe Racks
- o 10' Ceilings throughout First Floor
- o 6 Phone or Cable Outlets
- o 50 Gallon Water Heater and Ice Maker Water Line
- o Large Base and Casing throughout Main Floor
- o Paint: 3 Wall Colors (flat)/1 Enamel/ 1 Stain
- o Stained Stair End Caps with Iron Spindles
- o Sump Pump
- o ¾ Bath Stub for future Basement Finish
- o Knockdown Ceilings Throughout (minus Garage)
- o Full Access to Design Center and Personal Decorator
- o In House Warranty Program

