

AUGUSTA I

Bickimer Homes



4
BEDS

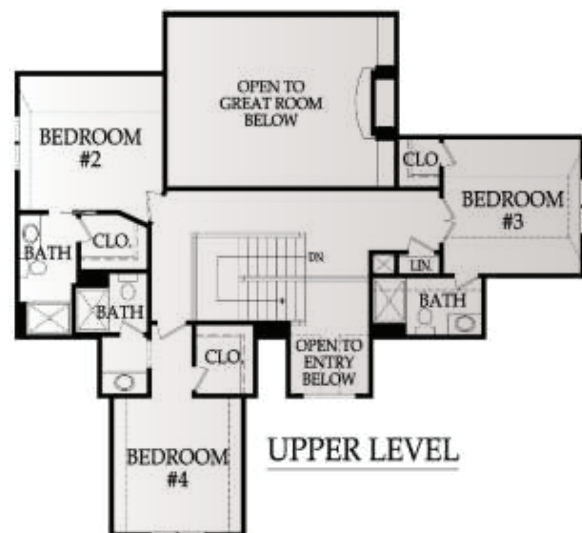
4.5
BATHS

3000
SQ. FT.


**CENTURY
FARMS**

1.5 STORY

NOW BUILDING ON
LOT 5



UPPER LEVEL
960 SQFT

EXTERIOR

- Foundation: 9' Foundation Walls with Concrete Egress Window Well
- Roof: Limited Lifetime Warranty Roof
- Front: Stucco and Stone per Elevation with LP Smart Trim
- Sides and Rear: LP Smart Siding and Trim, 5/50 Limited Warranty
- Landscaping: Custom Design Allowance with Bluegrass Sod
- Doors: Insulated Garage Doors with Openers, Fiberglass Front Door
- Windows: Energy Efficient Low-E Windows
- Patio/Deck: Covered 12x20 Patio

INTERIOR

KITCHEN

- o Choice of Knotty Alder, Birch or Paint Grade Cabinets
- o Cabinets include Full Extension Drawer Guides, Pull-out Trash Can, and Spice Rack
- o Level 1 Granite
- o Granite Center Island
- o Walk-in Pantry
- o Under Cabinet Lighting
- o Stainless Steel Appliance Package
- o Custom Mixed Width White Oak Hardwood Floors

BATHS & LAUNDRY

- o Large Laundry Room Conveniently located by Master Suite
- o Tile Floors in Laundry and all Baths
- o Cultured Marble Tops in all Baths
- o Tile on all Shower and Tub Walls in Secondary Baths
- o Every Bedroom has its own Private Bathroom
- o Level 1 Granite in Master Bath
- o Freestanding Tub in Master Bath

GREAT ROOM

- o Tray Ceiling in Hearth Room
- o Direct Vent Fireplace
- o Custom 4" Hickory Hardwood Floors

ENERGY EFFICIENT FEATURES

- o Engineered for Maximum Energy Efficiency
- o Independently rated Resnet HERS Index Home
- o R-13 Wall Insulation with Grade 1 Verified Installation, R-49 Attic Insulation
- o 95 % Lennox Furnaces with Humidifier
- o Energy Star Compliant Foam and Caulk Package

OTHER FEATURES

- o BONUS FINISHED LOWER LEVEL w Bar & Built in Media Cabinet
- o Built-In Boot Bench
- o BONUS Loft Space
- o First Floor Study
- o 6 Phone or Cable Outlets
- o 50 Gallon Water Heater and Ice Maker Water Line
- o Large Base and Casing throughout Main Floor
- o Paint: 3 Wall Colors (flat)/1 Enamel/ 1 Stain
- o Sump Pump
- o ¾ Bath Stub for future Basement Finish
- o Knockdown Ceilings Throughout (minus Garage)
- o Full Access to Design Center and Personal Decorator
- o In House Warranty Program

