

DANBURY

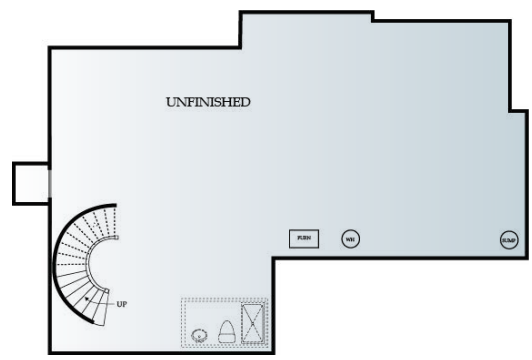
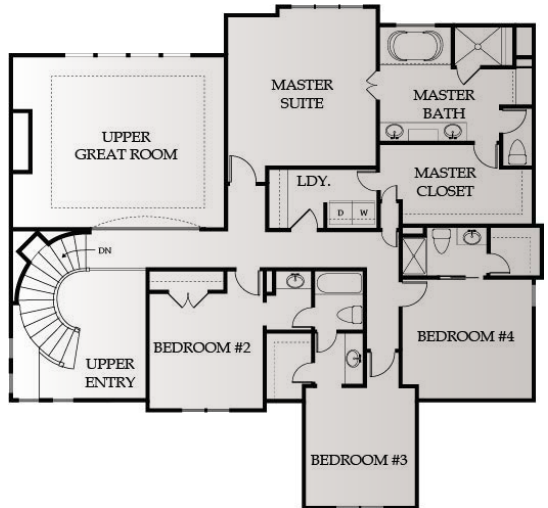
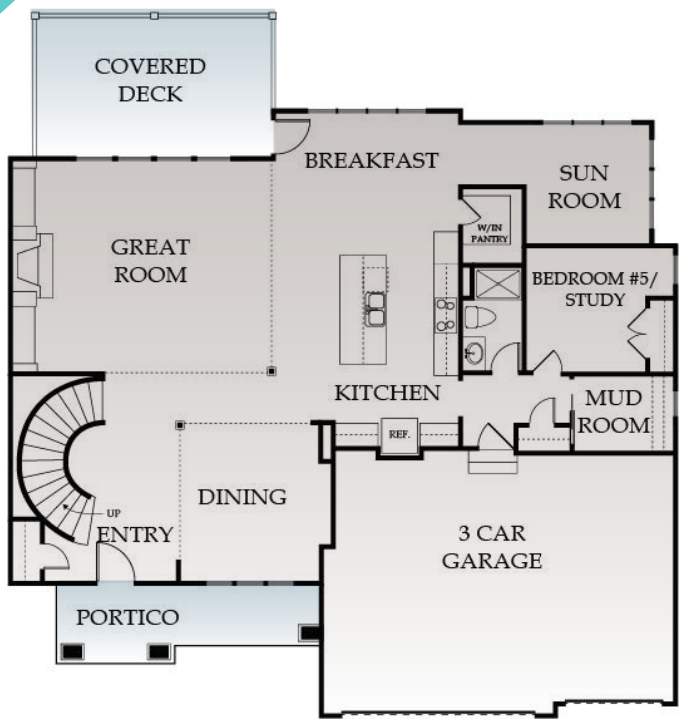
Bickimer Homes



5 BEDS | **4** BATHS | **3400** SQ. FT.



2 STORY



Rachelle Moley (913) 433-4651
Mike K. Perry P.C. (816) 210-4455

CENTURYFARMSOP.COM
CenturyFarmsOP@gmail.com



EXTERIOR

- Foundation: Damp Proof Package with 4" Perimeter Drain Tile
- Roof: Limited Lifetime Warranty Roof
- Front: Stucco and Stone per Elevation with LP Smart Trim
- Sides and Rear: LP Smart Siding and Trim, 5/50 Limited Warranty
- Landscaping: Custom Design Allowance with Bluegrass Sod
- Doors: Insulated Garage Doors with Openers, Fiberglass Front Door
- Windows: Energy Efficient Low-E Windows
- Patio/Deck: Covered 12x20 Patio

INTERIOR

KITCHEN

- o Choice of Knotty Alder, Birch or Paint Grade Cabinets
- o Cabinets include Full Extension Drawer Guides, Pull-out Trash Can, and Spice Rack
- o Level 1 Granite
- o Granite Center Island
- o Walk-in Pantry
- o Stainless Steel Appliance Package
- o Custom Mixed Width White Oak Hardwood Floors

BATHS & LAUNDRY

- o Large Laundry Room Conveniently located by Master Suite
- o Tile in Laundry and all Baths
- o Every Bedroom has its own Separate Vanity
- o Cultured Marble Tops in all Baths
- o Jetted Tub in Master Bath

GREAT ROOM

- o 18' Tall Ceiling
- o Gas Fireplace
- o Custom 4" White Oak Hardwood Floors

ENERGY EFFICIENT FEATURES

- o Engineered for Maximum Energy Efficiency
- o Independently rated Resnet HERS Index Home
- o Two 13 SEER ACs
- o R-13 Wall Insulation with Grade 1 Verified Installation, R-49 Attic Insulation
- o 95 % Lennox Furnaces with Humidifier
- o Energy Star Compliant Foam and Caulk Package

OTHER FEATURES

- o Built-In Boot Bench
- o 5th Bedroom on Main Floor
- o Bonus Sun Room on Main Floor
- o Beautiful Curved Stair Case
- o 6 Phone or Cable Outlets
- o 50 Gallon Water Heater and Ice Maker Water Line
- o Large Base and Casing throughout Main Floor and Upstairs Hallway
- o Stained Stair End Caps with Iron Spindles
- o Paint: 3 Wall Colors (flat)/1 Enamel/ 1 Stain
- o Sump Pump
- o Knockdown Ceilings Throughout (minus Garage)
- o Bath Stub for Future Basement Finish
- o Full Access to Design Center and Personal Decorator
- o In House Warranty Program

