

# CHIANTI

SAB Homes



**5**  
BEDS

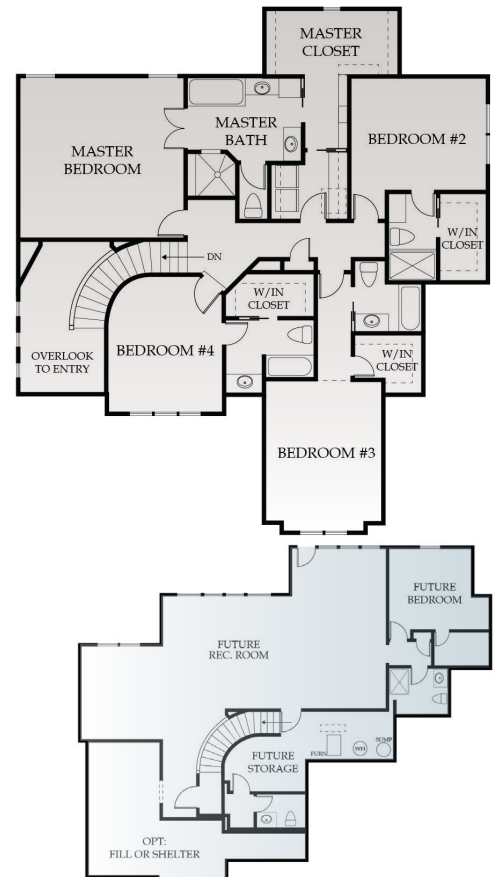
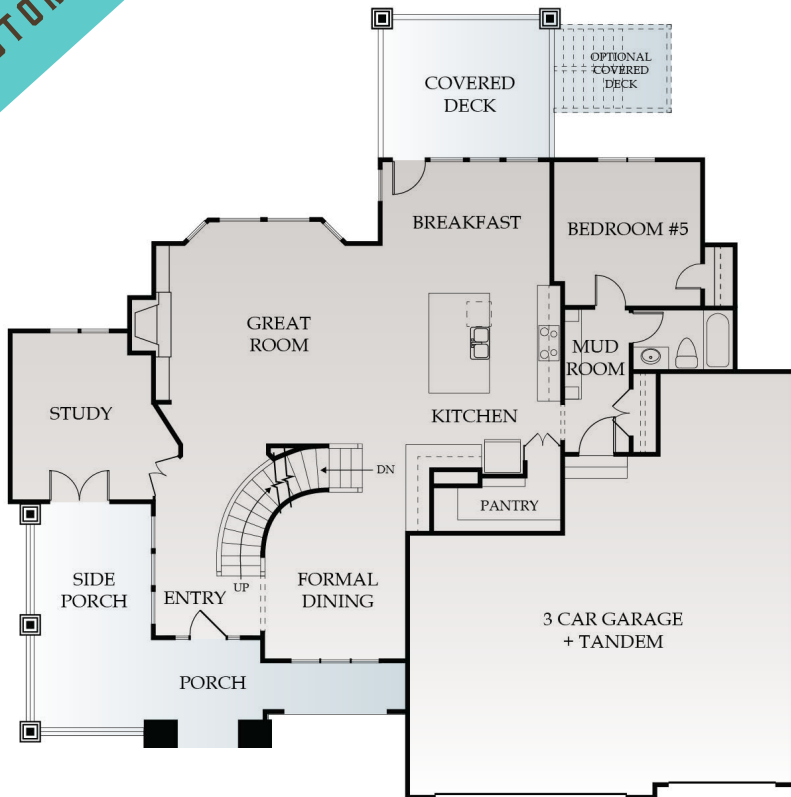
**5**  
BATHS

**3320**  
SQ. FT.

**CENTURY  
FARMS**

**2 STORY**

**1,660 SQFT  
MAIN LEVEL**



## INTERIOR

- o Stunning curved staircase at entry
- o Tall ceilings with accent beams
- o Generously sized front porch and covered deck
- o Large chef 's kitchen with island seating
- o Gas cooktop
- o Huge walk-in pantry
- o Office or den with french doors
- o Generous room sizes, each with unique details
- o Private bath for each bedroom
- o \$2620 Appliance allowance
- o \$4200 Lighting allowance

## MORE UPGRADES INCLUDED WITH SAB HOMES

- o Granite counter tops in kitchen and all bathrooms
- o Additional bathrooms have tiled walls in both showers and tub/shower. No fiberglass tub or shower units!
- o Covered patio or deck on most plans (plan specific)
- o 8 lb. carpet padding throughout
- o Upgraded designer stair carpet allowances
- o Eggshell paint on walls in bathrooms
- o Sump pump battery backup on all finished basements (except walk-out lots, which have natural drainage)
- o Large base trim on main floor open areas
- o Full extension cabinet drawer glides
- o Pull out double trash can recycling center (plan specific)

## ENERGY EFFICIENT STANDARD EQUIPMENT

- o 40 year composition roof
- o MERV-16 High Efficiency Media Furnace Filter (up to 95% efficiency in removing dust and mold spores)
- o Zoned HVAC for efficiency
- o Programmable thermostat
- o 14 SEER Heat pump with 95% efficiency rating
- o Dual 50 gallon hot water heaters
- o Low-E double panel vinyl windows
- o Framing techniques to allow for properly insulated corners and vaulted ceilings
- o Taped and sealed heating and cooling supply duct system
- o All exterior walls sealed to foundation/subfloor using glue and caulk
- o Direct vent sealed gas fireplace
- o Tyvek or equivalent exterior house wrap to prevent air and water infiltration
- o All exterior windows/doors sealed around framing using insulated spray foam

