

# JEFFERSON IV

Bickimer Homes



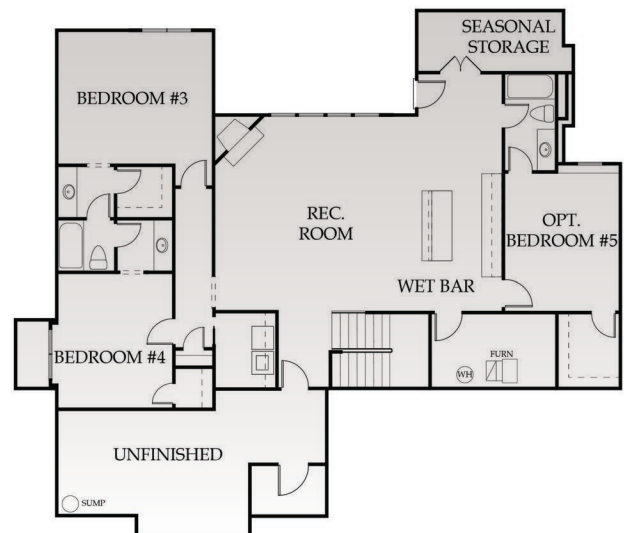
4  
BEDS

4.5  
BATHS

3648  
SQ. FT.



REVERSE  
1.5 STORY



**EXTERIOR:**

- Foundation: 9' Foundation Walls
- Roof: Limited Lifetime Warranty Roof
- Front: Stucco and Stone per Elevation with LP Smart Trim
- Sides and Rear: LP Smart Siding and Trim, 5/50 Limited Warranty
- Landscaping: Custom Design Allowance with Bluegrass Sod
- Doors: Insulated Garage Doors with Openers, Fiberglass Front Door
- Windows: Energy Efficient Low-E Windows
- Patio/Deck: Covered 20 X 14 Patio

**INTERIOR:****KITCHEN**

- o Choice of Knotty Alder, Birch or Paint Grade Cabinets
- o Cabinets include Full Extension Drawer Guides, Pull-out Trash Can, and Spice Rack
- o Level 1 Granite
- o Granite Center Island
- o Walk-in Pantry
- o Under Cabinet Lighting
- o Cathedral Vault Ceiling
- o Stainless Steel Appliance Package
- o Custom Hardwood Floors

**BATHS AND LAUNDRY**

- o Large Laundry Room Conveniently located by Master Suite
- o Tile Floor in Laundry and all Baths
- o Cultured Marble Tops in all Baths
- o Jetted Tub in Master Bath

**GREAT ROOM**

- o 13' Tall Ceiling
- o Direct Vent Fireplace
- o Custom Hardwood Floors

**ENERGY EFFICIENT FEATURES**

- o Engineered for Maximum Energy Efficiency
- o Independently Rated Resnet HERS Index Home
- o R-13 Wall Insulation with Grade 1 Verified Installation, R-49 Attic Insulation
- o 95% Lennox Furnace with Humidifier and 13 SEER AC
- o Energy Star Compliant Foam and Caulk Package

**OTHER FEATURES**

- o Built-In Boot Bench
- o 2nd Bedroom on Main Floor
- o Finished Lower Level
- o 6 Phone or Cable Outlets
- o 50 Gallon Water Heater and Ice Maker Water Line
- o Large Base and Casing throughout Main Floor
- o Paint: 3 Wall Colors (flat)/1 Enamel/1 Stain
- o Stained Stair End Caps with Iron Spindles
- o Sump Pump
- o Knockdown Ceilings Throughout (minus Garage)
- o Full Access to Design Center and Personal Decorator
- o In House Warranty Program

