

SAB Homes



5
BEDS

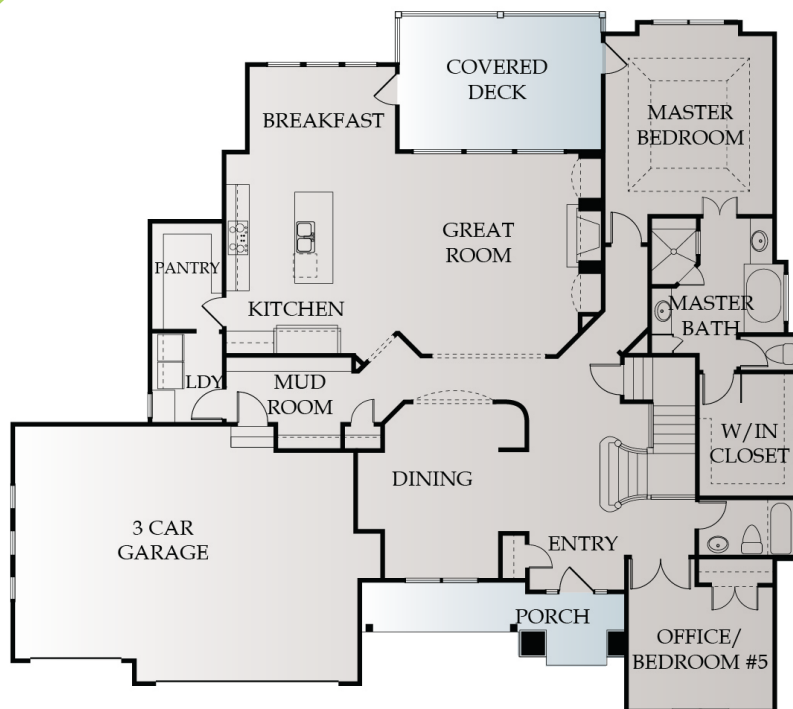
5 BATHS

3640
SQ. FT.

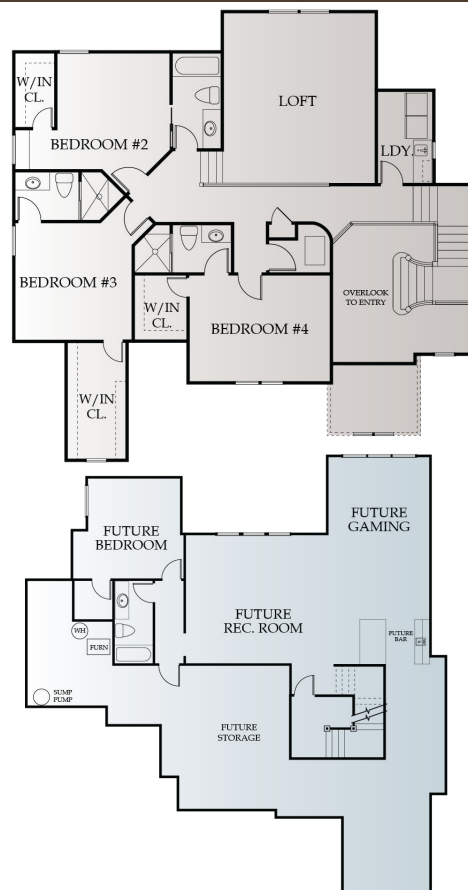


CENTURY FARMS

1.5 STORY



2,270 SQFT
MAIN LEVEL



UPPER LEVEL
1,370 SQFT

OPT. LOWER
1,100 SQFT

INCLUDES

- o Chef 's kitchen with large island
- o Large mudroom with generous storage options
- o Built-in desk off kitchen
- o Gas cooktop
- o Master on the main floor
- o Office or Guest suite on the main floor
- o Formal dining room with barrel-vaulted entry
- o Washer & dryer hookups in main floor laundry room and stackable laundry upstairs
- o Bonus loft space
- o \$2620 Appliance allowance
- o \$4200 Lighting allowance

MORE UPGRADES INCLUDED WITH SAB HOMES

- o Granite counter tops in kitchen and all bathrooms
- o Additional bathrooms have tiled walls in both showers and tub/shower.
- o No fiberglass shower units!
- o Covered patio or deck on most plans (plan specific)
- o 8 lb. carpet padding throughout
- o Upgraded designer stair carpet allowances
- o Eggshell paint on walls in bathrooms
- o Sump pump battery backup on all finished basements (except walk-out lots, which have natural drainage)
- o Large base trim on main floor open areas
- o Full extension cabinet drawer glides
- o Pull out double trash can recycling center (plan specific)

ENERGY EFFICIENT STANDARD EQUIPMENT

- o 40 year composition roof
- o MERV-16 High Efficiency Media Furnace Filter (up to 95% efficiency in removing dust and mold spores)
- o Zoned HVAC for efficiency
- o Programmable thermostat
- o Heat pump with 95% efficiency rating
- o Dual 50 gallon hot water heaters
- o Low-E double panel vinyl windows
- o Framing techniques to allow for properly insulated corners and vaulted ceilings
- o Taped and sealed heating and cooling supply duct system
- o All exterior walls sealed to foundation/subfloor using glue and caulk
- o Direct vent sealed gas fireplace
- o Tyvek or equivalent exterior house wrap to prevent air and water infiltration
- o All exterior windows/doors sealed around framing using insulated spray foam

