

JEFFERSON II

Bickimer Homes



4
BEDS

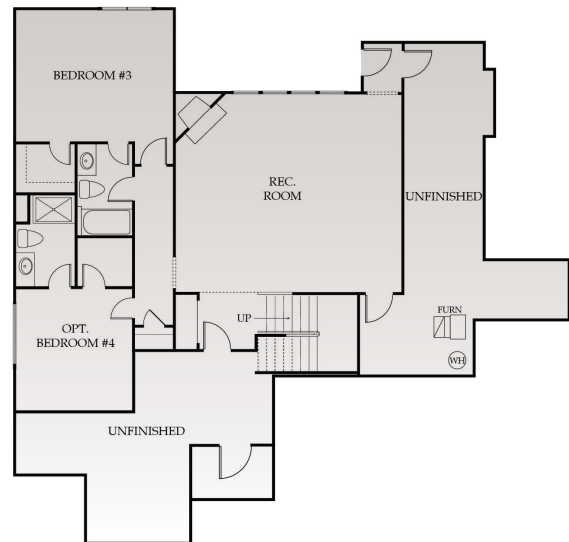
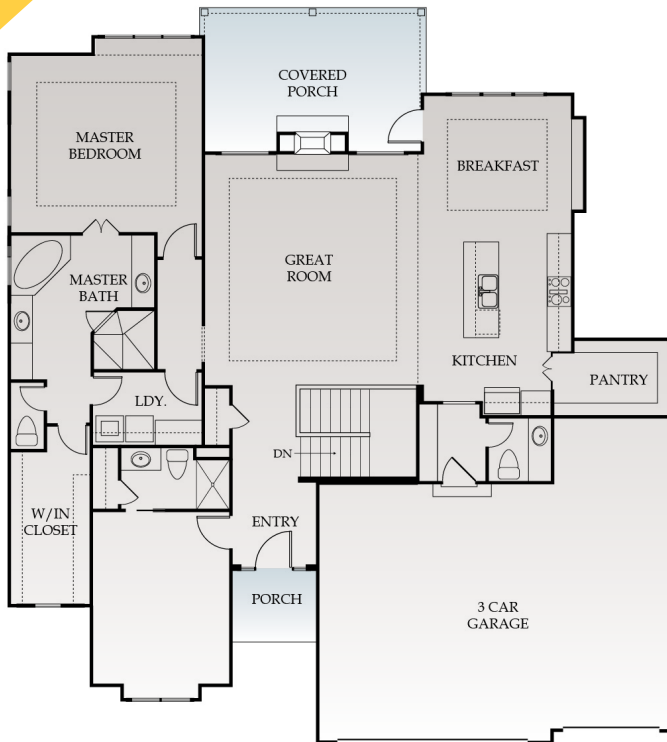
4.5
BATHS

3031
SQ. FT.



REVERSE
1.5 STORY

STARTING AT
\$575,000



1,829 SQFT
MAIN LEVEL

LOWER LEVEL
1,202 SQFT



Rachelle Moley (913) 433-4651
Mike K. Perry P.C. (816) 210-4455

CENTURYFARMSOP.COM
CenturyFarmsOP@gmail.com

Weichert
REALTORS
Welch & Company



EXTERIOR:

- Foundation 9' Foundation Walls with Concrete Egress Window Well
- Roof Limited Lifetime Warranty Roof
- Front Stucco and Stone per Elevation with LP Smart Trim
- Sides/Rear LP Smart Siding and Trim, 5/50 Limited Warranty
- Landscaping Custom Design Allowance with Bluegrass Sod
- Doors Insulated Garage Doors with Openers, Fiberglass Front Door
- Windows Energy Efficient Low-E Windows
- Patio/Deck Covered Patio with Optional Covered 12x18 Deck

INTERIOR:

KITCHEN

- o Choice of Knotty Alder, Birch or Paint Grade Cabinets
- o Cabinets include Full Extension Drawer Guides, Pull-out Trash Can, and Spice Rack
- o Level 1 Granite
- o Granite Center Island
- o Walk-in Pantry
- o Under Cabinet Lighting
- o Stainless Steel Appliance Package
- o Custom Mixed Width or 4" White Oak Hardwood Floors

BATHS AND LAUNDRY

- o Large Laundry Room Conveniently located by Master Suite
- o Tile Floor in Laundry and all Baths
- o Cultured Marble Tops in all Baths
- o Every Bedroom has its own Private Bathroom
- o Jetted Tub in Master Bath
- o Tile on all Shower and Tub Walls in Secondary Baths

GREAT ROOM

- o 13' Tall Ceiling
- o Direct Vent Fireplace
- o Custom Mixed Width or 4" White Oak Hardwood Floors

ENERGY EFFICIENT FEATURES

- o Engineered for Maximum Energy Efficiency
- o Independently Rated Resnet HERS Index Home
- o 95% Lennox Furnace with Humidifier and 13 SEER AC
- o R-13 Wall Insulation with Grade 1 Verified Installation, R-49 Attic Insulation
- o Energy Star Compliant Foam and Caulk Package

OTHER FEATURES

- o Built-In Boot Bench
- o Optional Study/2nd Bedroom on Main Floor
- o 50 Gallon Water Heater and Ice Maker Water Line
- o Large Base and Casing throughout Main Floor
- o Paint: 3 Wall Colors (flat)/1 Enamel/1 Stain
- o 6 Phone or Cable Outlets
- o Stained Stair End Caps with Iron Spindles
- o Sump Pump
- o Knockdown Ceilings Throughout (minus Garage)
- o Full Access to Design Center and Personal Decorator
- o In House Warranty Program

