

AUGUSTA III

Bickimer Homes



FRONT PORCH
ELEVATION SHOWN

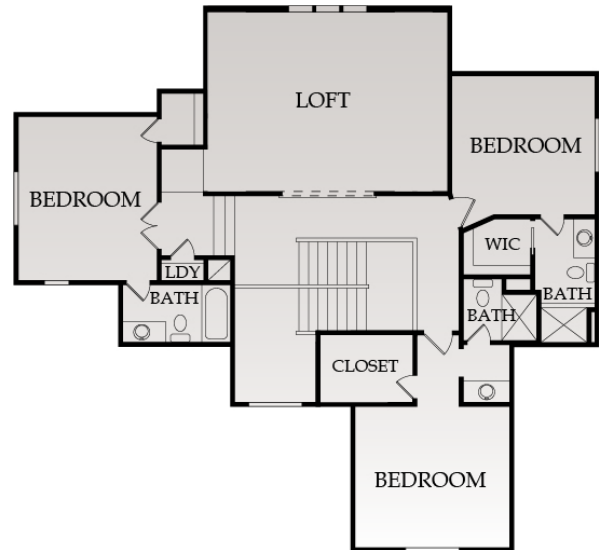
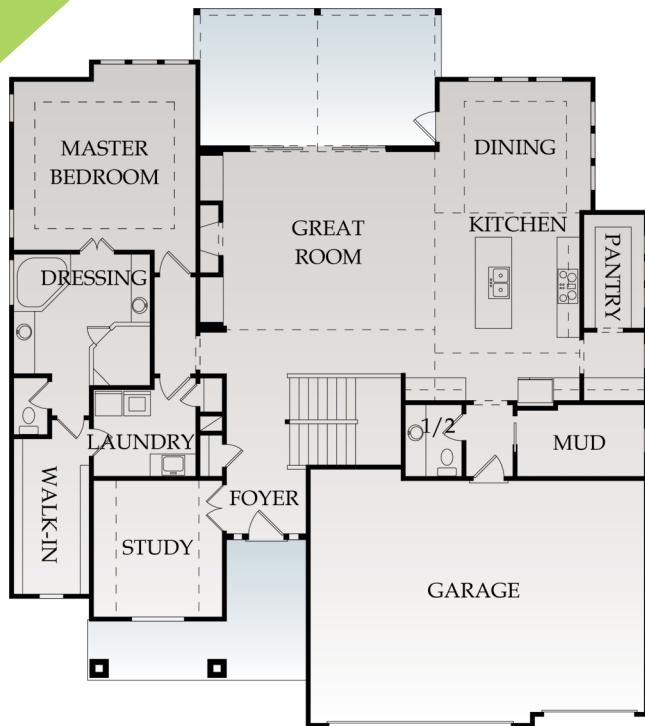
4
BEDS

4.5
BATHS

3436
SQ. FT.



1.5 STORY



UPPER LEVEL
1,230 SQFT

MODEL HOME ON LOT 90 OPENING SPRING 2021!



Rachelle Moley (913) 433-4651
Mike K. Perry P.C. (816) 210-4455

CENTURYFARMSOP.COM
CenturyFarmsOP@gmail.com

Weichert
REALTORS
Welch & Company



EXTERIOR

- Foundation: 9' Foundation Walls with Concrete Egress Window Well
- Roof: Limited Lifetime Warranty Roof
- Front: Stucco & Stone per Elevation with LP Smart Side Trim
- Sides/Rear: LP Smart Siding and Trim, 5/50 Limited Warranty
- Landscaping: Custom Design Allowance with Bluegrass Sod, Irrigation System
- Doors: Insulated Garage Doors with Openers, Double Fiberglass Front Doors
- Windows: Energy Efficient Low-E Windows
- Patio/Deck: Covered 12x20 Patio

INTERIOR

KITCHEN

- o Painted Cabinets to Ceiling
- o Cabinets include Full Extension Drawer Guides, Pull-out Trash Can, and Spice Rack
- o Granite Counter Tops
- o Walk-in Pantry with Shelving and Laminate Top
- o Under Cabinet Lighting
- o Stainless Steel Appliance Package
- o Custom 4" White Oak Hardwood Floors

BATHS & LAUNDRY

- o Large Laundry Room Conveniently located by Master Suite
- o Tile Floors in Laundry and all Baths
- o Cultured Marble Tops in all Baths
- o Tile on all Shower and Tub Walls in Secondary Baths
- o Every Bedroom has its own Private Bathroom
- o Free Standing Tub, Upgraded Plumbing Fixtures & Upgraded Tops in Master Bath

GREAT ROOM

- o Direct Vent Fireplace
- o Custom 4" White Oak Hardwood Floors

ENERGY EFFICIENT FEATURES

- o Engineered for Maximum Energy Efficiency
- o Independently Rated Resnet HERS Index Home
- o R-13 Wall Insulation with Grade 1 Verified Installation, R-49 Attic Insulation
- o 95% Lennox Furnace with Humidifier and 13 SEER AC
- o Energy Star Compliant Foam and Caulk Package

OTHER FEATURES

- o True Mud Room with Built-In Boot Bench
- o First Floor Study
- o Bonus Front Porch
- o 50 Gallon Water Heater and Ice Maker Water Line
- o Large Base and Casing throughout Main Floor
- o 8' Exterior Double Doors
- o Upgraded Stair Carpet
- o Sump Pump
- o 3/4 Bath Stub for future Basement Finish
- o Knockdown Ceilings Throughout (minus Garage)
- o Full Access to Design Center and Personal Decorator
- o In House Warranty Program

