

## Starting installation Ricoh SG 3110DN and SG 7100DN Corel Draw X5-X8

Although the screenshots in the following manual relate to the Ricoh SG 7100DN, the installation process for the Ricoh SG 3110 DN is virtually identical.

### 1. RPCS Driver installation

**Option 1:** Copy the RPCS Driver from the Print Equipment disk or from the Ricoh disk, unzip the files in a folder of your choosing and run the setup in the chosen folder.

**Option 2:** You can also directly download the driver from the official Ricoh website:

SG3110DN: [http://support.ricoh.com/bb/html/dr\\_ut\\_e/re1/model/sg3110dn/sg3110dn.htm](http://support.ricoh.com/bb/html/dr_ut_e/re1/model/sg3110dn/sg3110dn.htm)

SG7100DN: [http://support.ricoh.com/bb/html/dr\\_ut\\_e/re2/model/sg7100dn/sg7100dn.htm](http://support.ricoh.com/bb/html/dr_ut_e/re2/model/sg7100dn/sg7100dn.htm)

For a more detailed instruction regarding the installation of the RPCS driver please see the separate instruction on the disk.

PDF-file:

### 2. Settings in the printer driver

**2.1** To change the setting of the driver you are required to go to the printing preferences.

You will find them under control panel/printer & faxes/printing preferences.

Alternatively, under windows/start > click left mouse button on the respective Ricoh printer > printing preferences.

To find out what operating system you are using click right mouse button on the windows symbol and then click left mouse button on system.

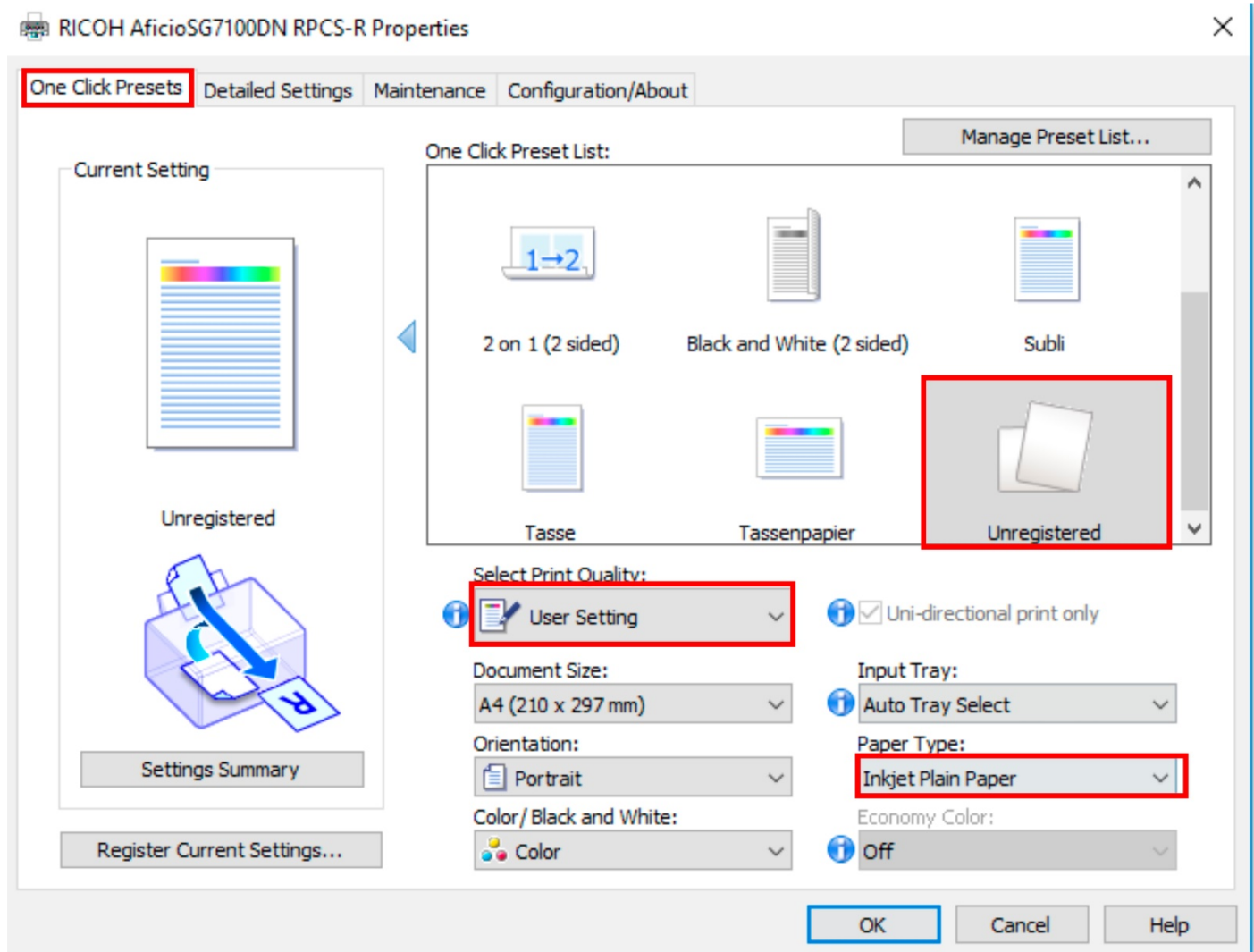
# Sublisplash®

Colour in Motion

## 2.2 Change the following setting in the tab named “One Click Presets”:

(The settings of the paper type depend on the kind of transfer paper that is being used. If you use the Ricoh-TexPrint paper (TXPF-RI) choose the setting inkjet plain paper.)

Alternatively, If TexPrint paper (TXPF-105) is being used, choose the setting high gloss paper. With high gloss paper the colour profile is slightly altered, which in turn means that colour differences could occur.



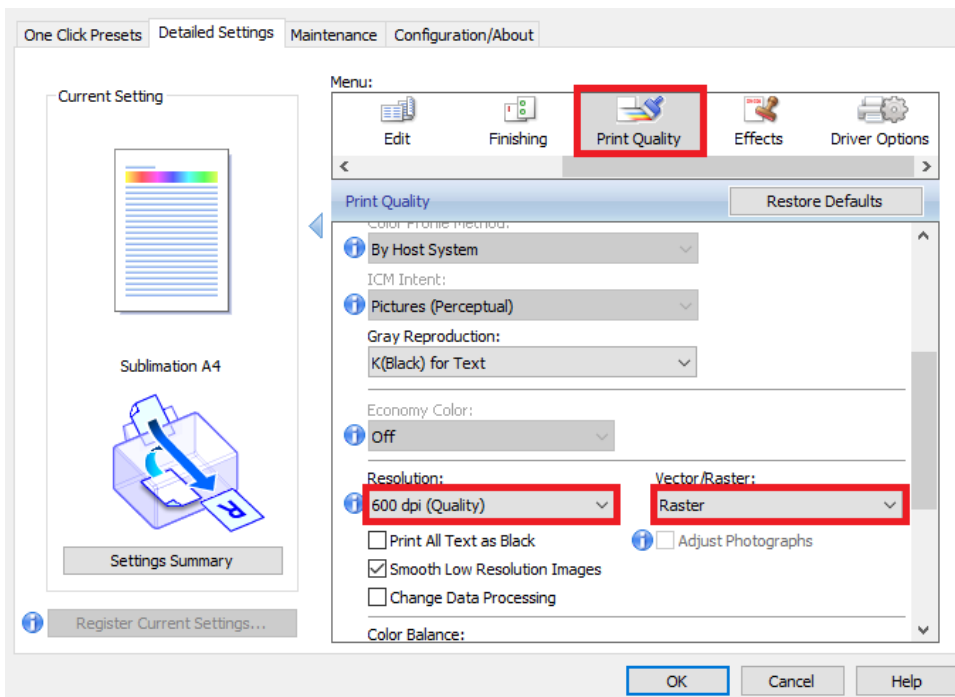
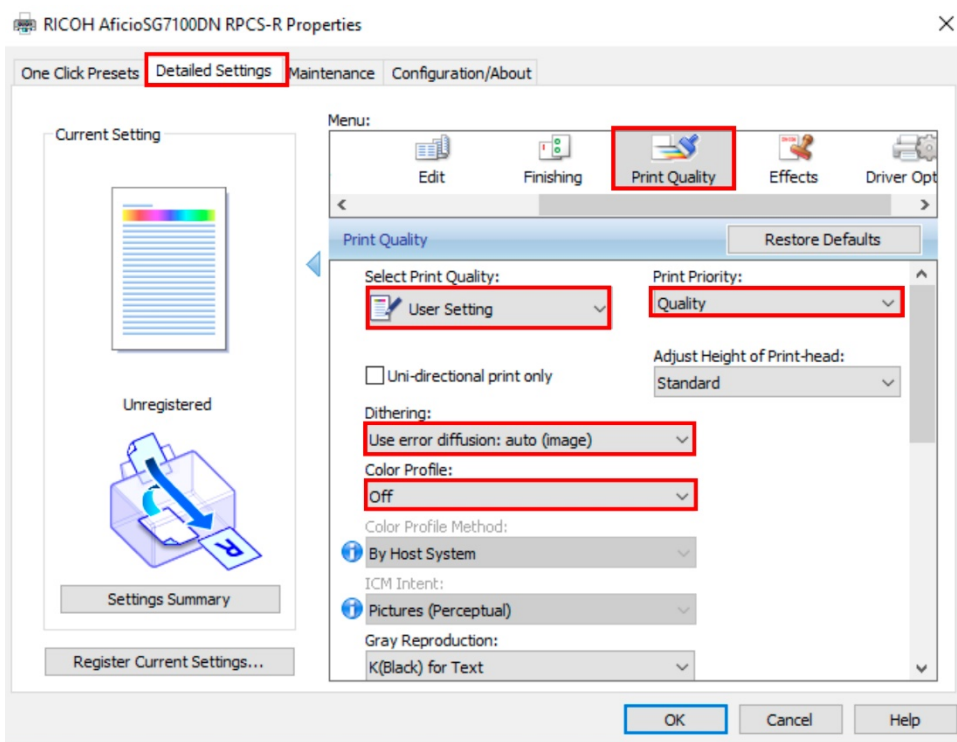
**Note:** When a new preference has been set, it will be known as “Unregistered”. Only after saving these preferences you will be able to name them.

[www.sublisplash.com](http://www.sublisplash.com)

\*All trademarks, product names and logos are the property of their respective owners.  
Any rights not expressly granted herein are reserved.

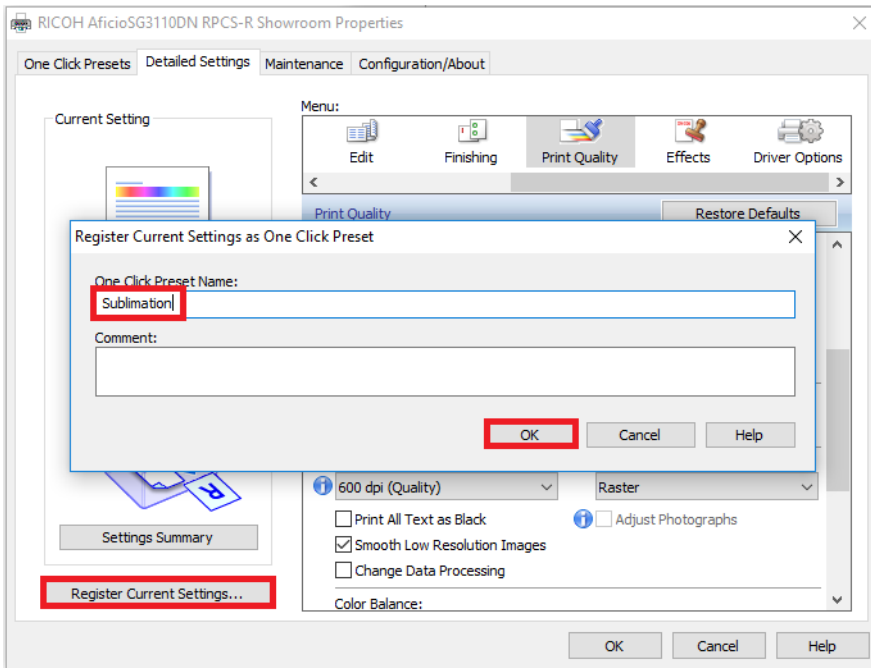
## 2.3 Go to the tab “Detailed Settings” and select the icon “Print Quality”.

Change the following settings:



**2.4 Save the changed preferences by clicking on “Register Current Settings”.**

**It is best to name them something obvious e.g. Subli or Sublimation.**



## 3. Installation of the ICC-profile

**3.1 Open the folder of the ICC-profiles on the supplied disk.**

**3.2 Click the profile with the right mouse button and choose “install profile”.**

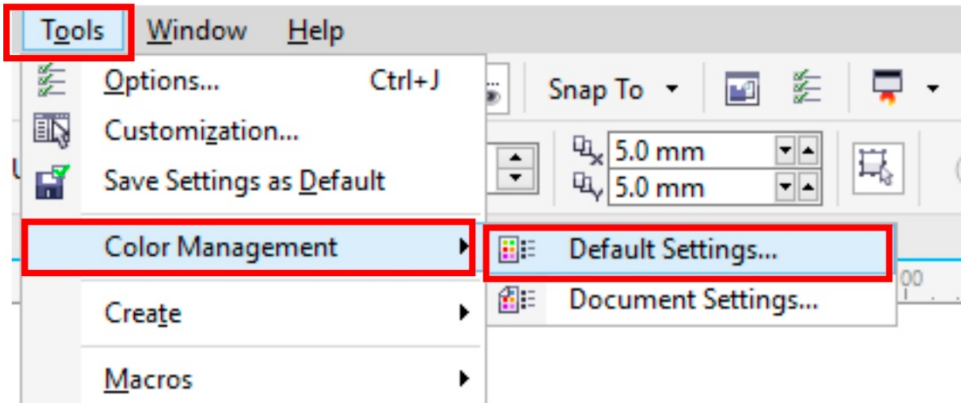
**The profile is now automatically installed on your computer.**

**(Under the following path: C:/windows/system32/spool/drivers/color).**

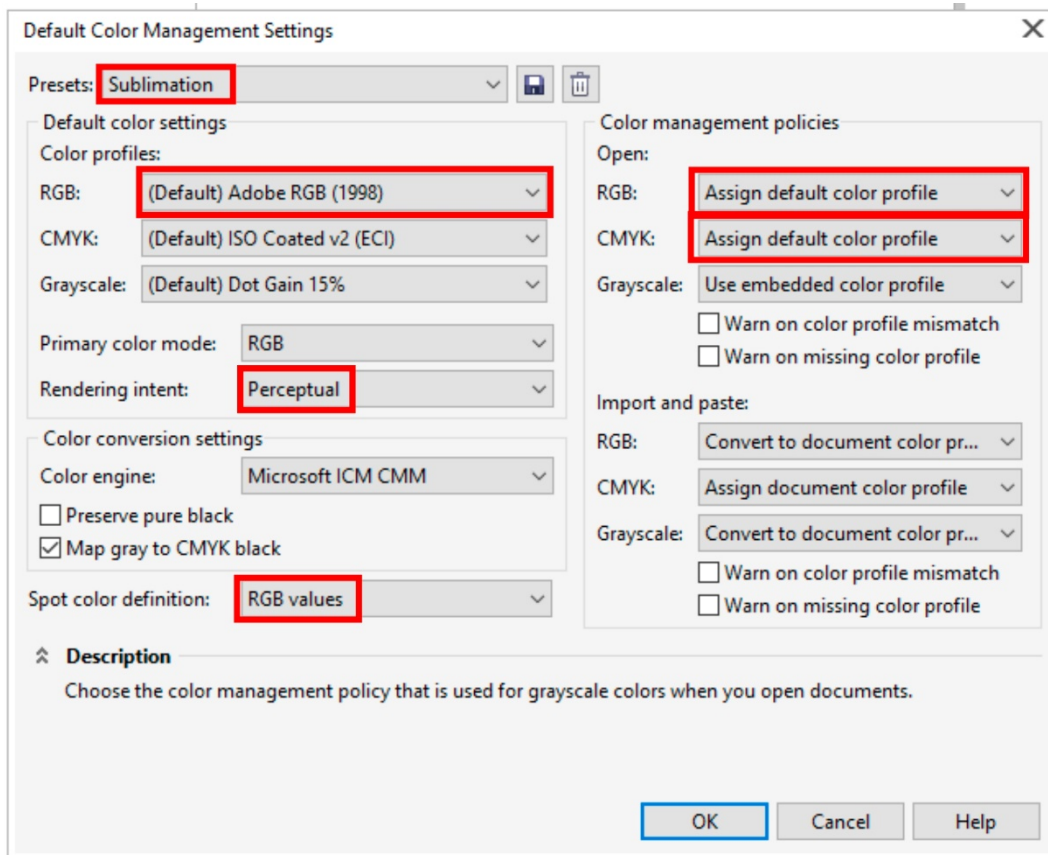
**When installing the profile there will be no window asking for confirmation.**

## 4. Colour settings in Corel X5- X8

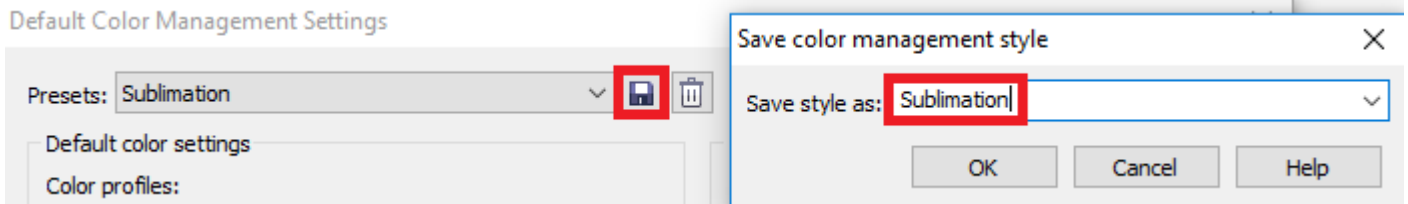
### 4.1 Open the default color management settings.



### 4.2 Change the following settings:

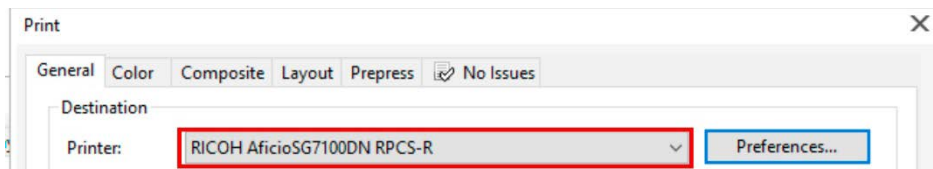


**4.3 Afterwards save the settings under an easily identifiable name e.g. Sublimation. This enables you to apply the settings through “Presets”.**

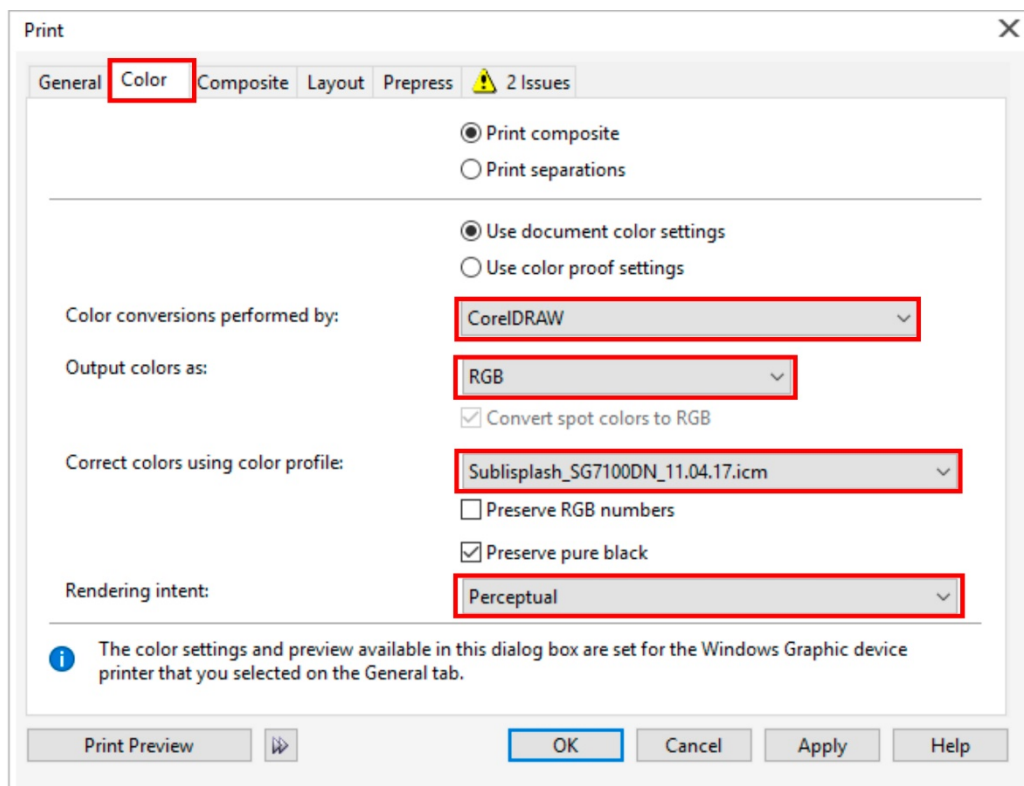


**4.4 Open printing preferences through “File” > “Print”.**

**4.5 Choose the printer.**



**4.6 Change the following settings in the tab “Color”:**

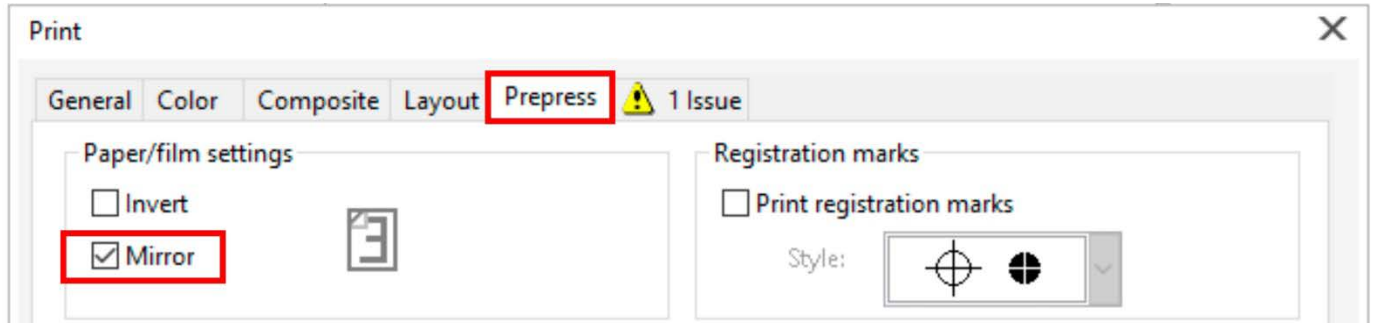




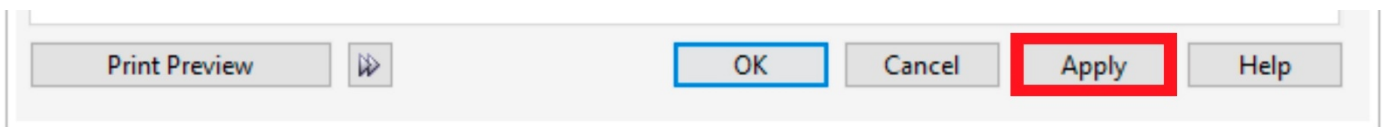
# Sublisplash®

*Colour in Motion*

**4.7 To mirror the picture when printing, check the box “Mirror” in the tab “Prepress”**



**4.8 Lastly, to save the settings, press “Apply”.**



[www.sublisplash.com](http://www.sublisplash.com)

\*All trademarks, product names and logos are the property of their respective owners.  
Any rights not expressly granted herein are reserved.