



Vertical Integration:

Basis for Production Boost and new ways of Production tuning

Dr Markus Schoisswohl

Hegla & syn2tec

Dr Jan Schäpers

Hegla Hanic GmbH

Vertical Integration

1. Who we are
2. Motivation
3. Industrie 4.0: Asset Administration
4. And what we can do more
5. Summary



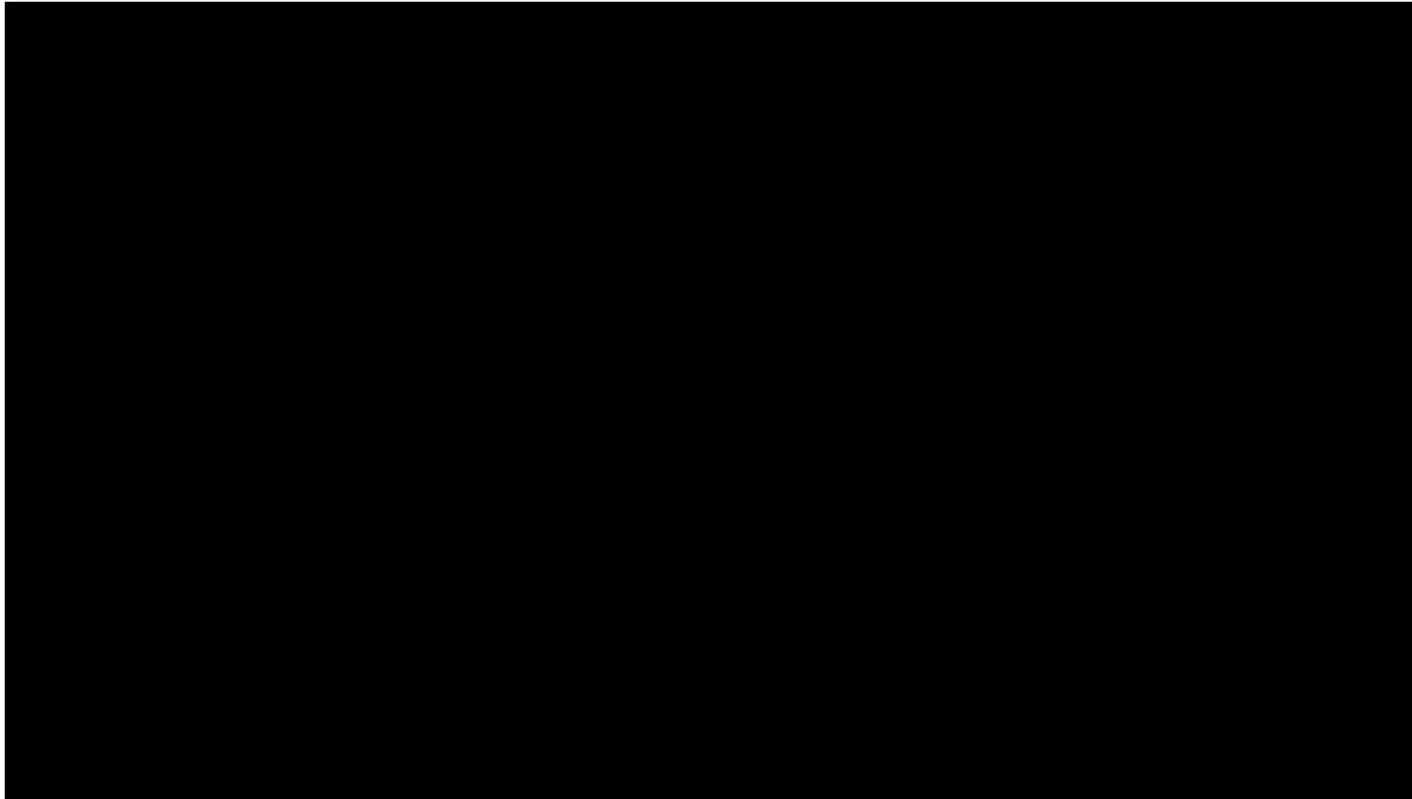
Vertical Integration

1. How we are
2. Motivation
3. Industrie 4.0: Asset Administration
4. And what we can do more
5. Summary



HEGLA key facts

success based on customers trust

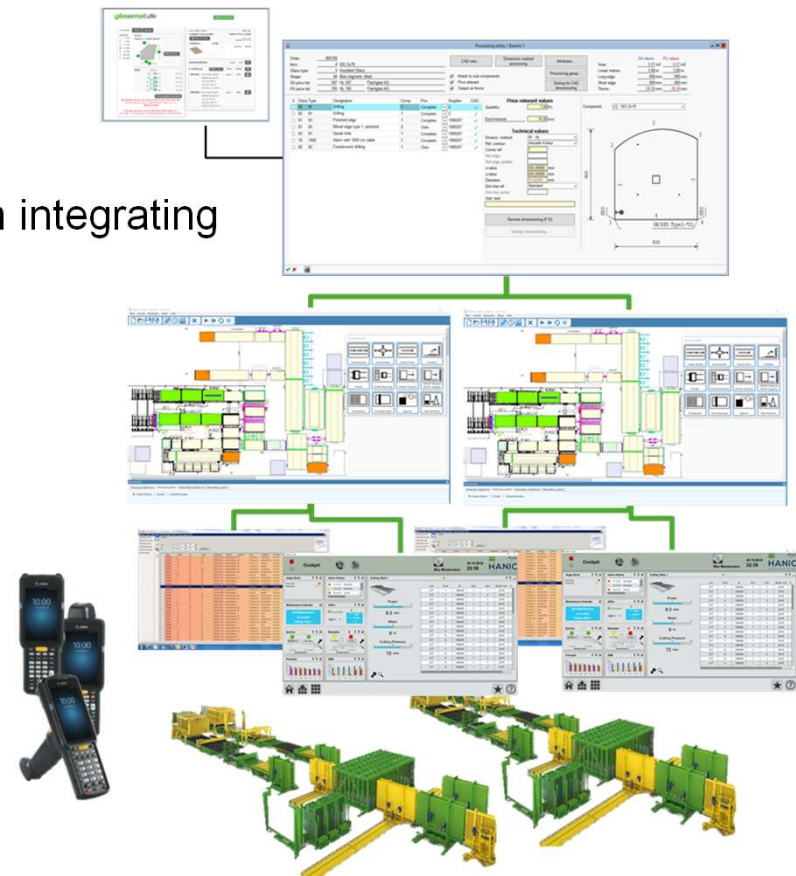


Was syn2tec bietet Überblick



Hegla Hanic provides

- **ERP**
 - Highly automated order management system integrating external inputs
 - **Production Planning**
 - Strategy follows Capacity planning
 - **MES**
 - from tracking to monitoring
- ... creating innovative workflows**



Was syn2tec bietet Überblick



Syn2tec.... providing value added

Conception & Rapid Prototyping

Prozess 2 Machine

Realisation

The image is a composite showing the software interface and the physical realization of the 'Prozess 2 Machine'. The software interface, titled 'Prozess 2 Machine', displays a detailed layout of the machine with various components labeled, including 'Storage A', 'Cut1 Exit Box', and 'Sortjet Resorter'. It features a grid of colored cells (red, green, blue) representing different states or components. The interface also includes a search bar, a home icon, and a navigation bar at the bottom. The photograph on the right shows the physical realization of the machine in a factory setting, with a white and green robotic unit on a grey floor, surrounded by industrial equipment and blue curtains.

Vertical Integration

1. How we are
2. Motivation
3. Industrie 4.0: Asset Administration
4. And what we can do more
5. Summary



Motivation

Why vertical integration matters

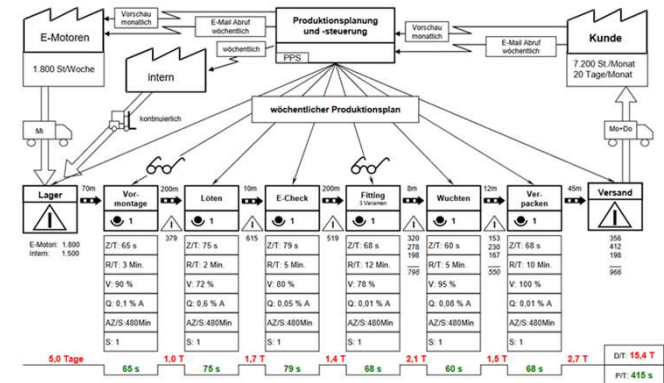
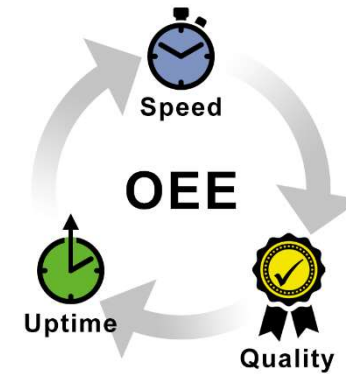
Production target:

➤ **Max. productivity OEE:**

- = v(production)
- * availability
- * good quality

➤ **@ lotsize 1**

... achievable?



Motivation

Why vertical integration matters



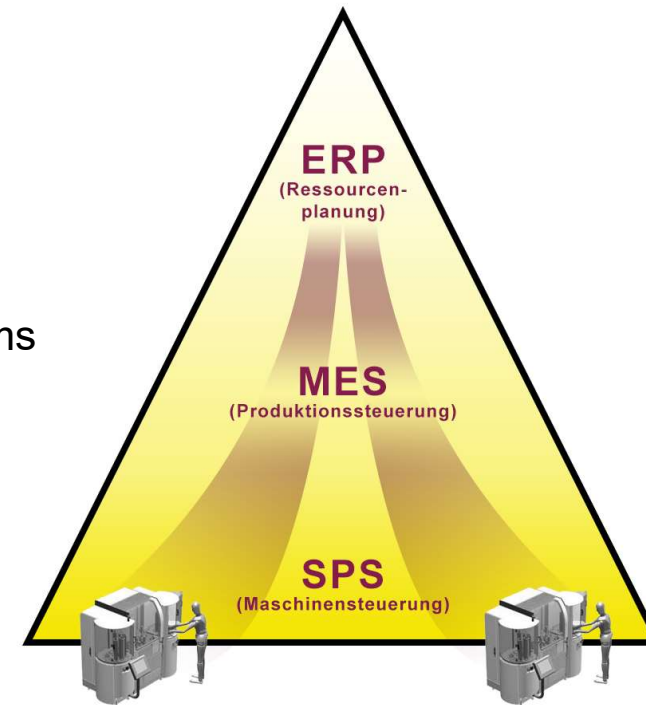
2 Examples for useful vertical integration

➤ On the machine level (example steel rolling)

- Combining signals (>1000) from
 - different machines control systems
 - Other sources camera
- Time synchronous and with high resolution down to 1ms

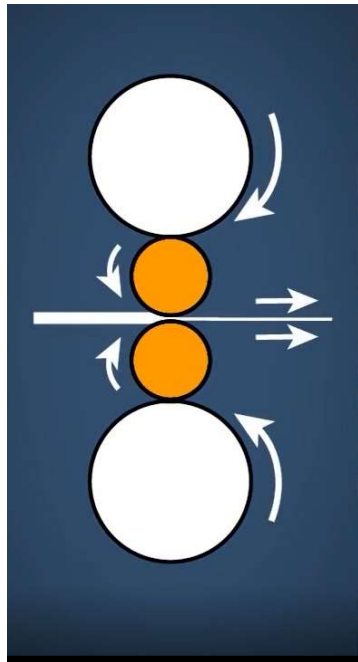
➤ On MES level (example IG production)

- Monitoring of
 - Complete production lines
 - Focusing on production cycles
 - with aggregation of data



Motivation

Example 1: Steel Rolling: Data % Camera



Typical mill stand parameters:

- Force: 2000 t
- Drive power: 6 MW

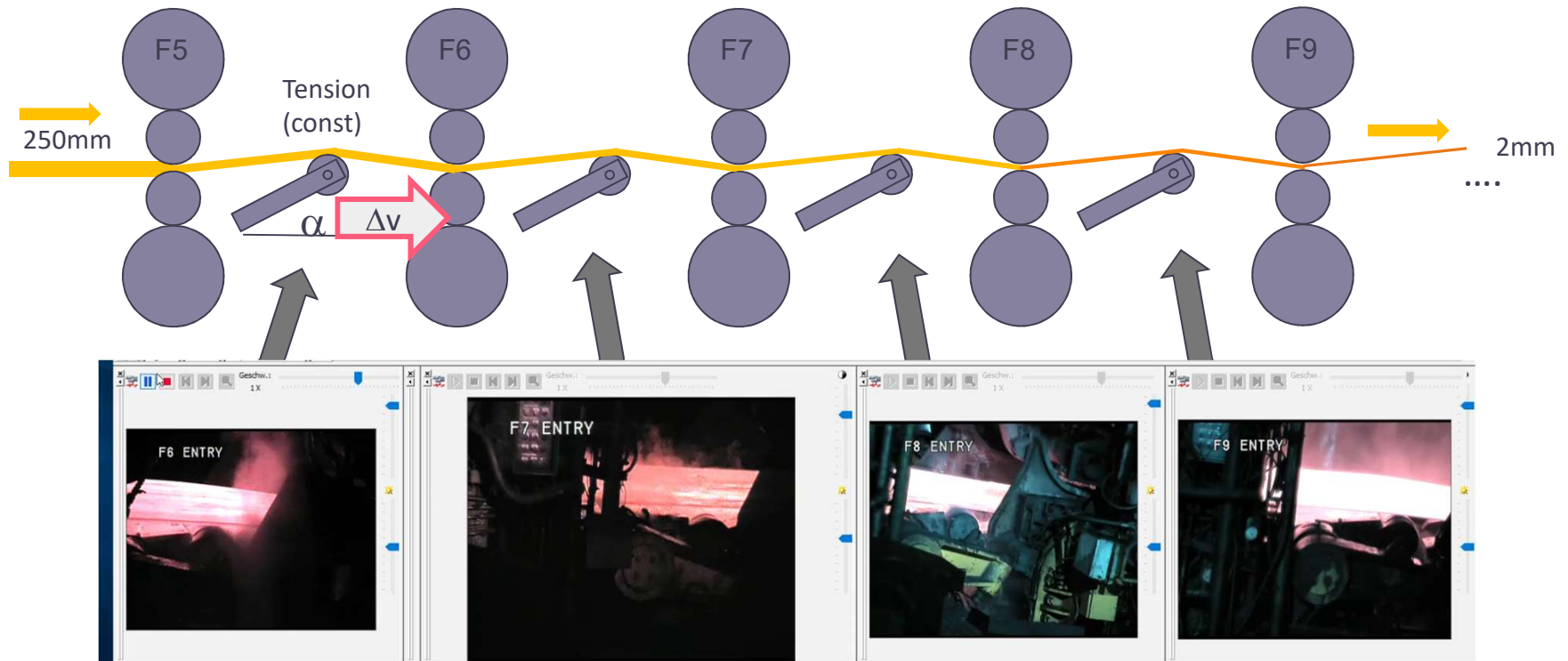


Source: <https://www.youtube.com/watch?v=AuuP8L-Wppl>

Motivation

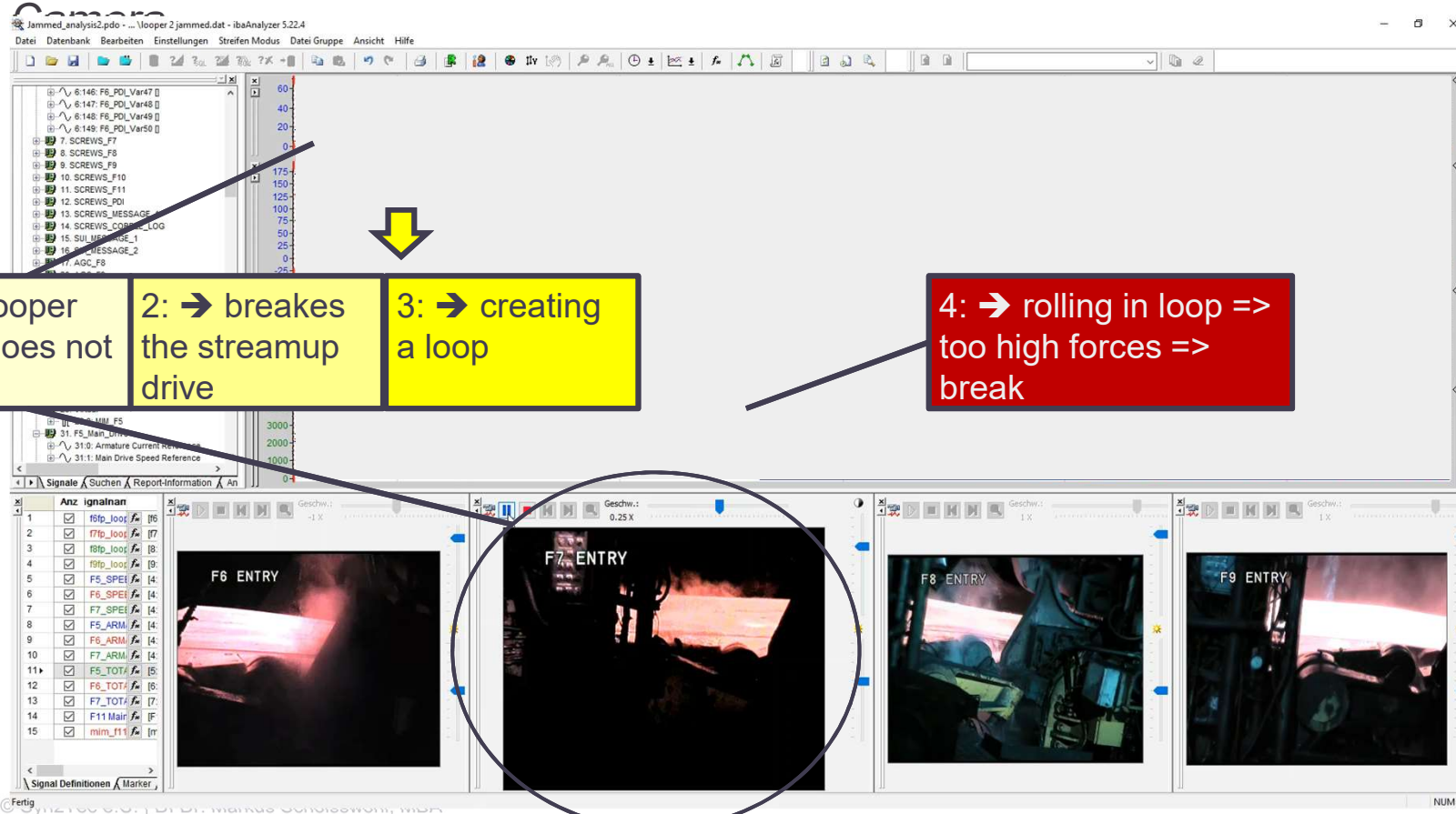
Example 1: Steel Rolling: Integration of Data and

Camera



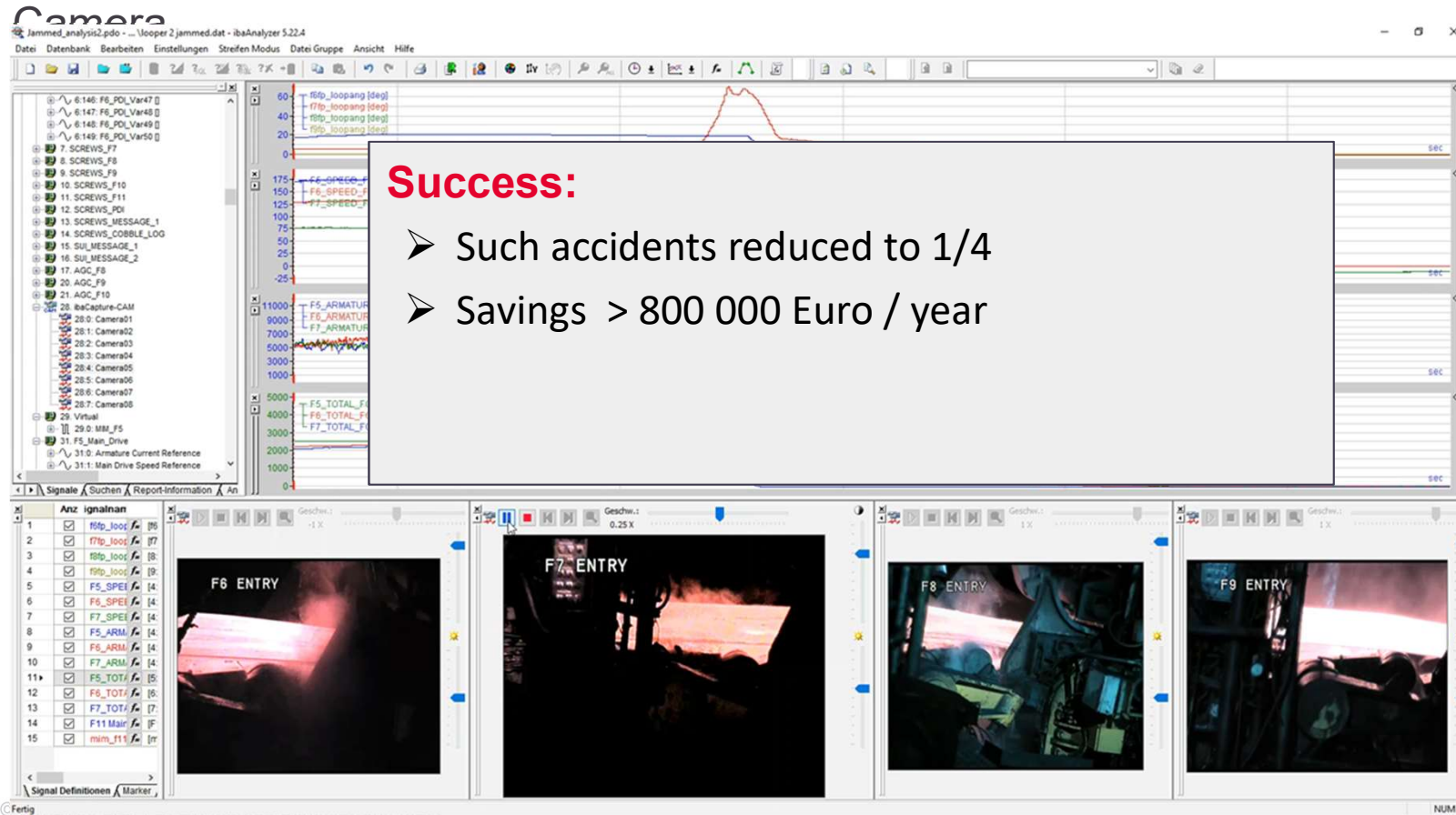
Motivation

Example 1: Steel Rolling: Integration of Data and



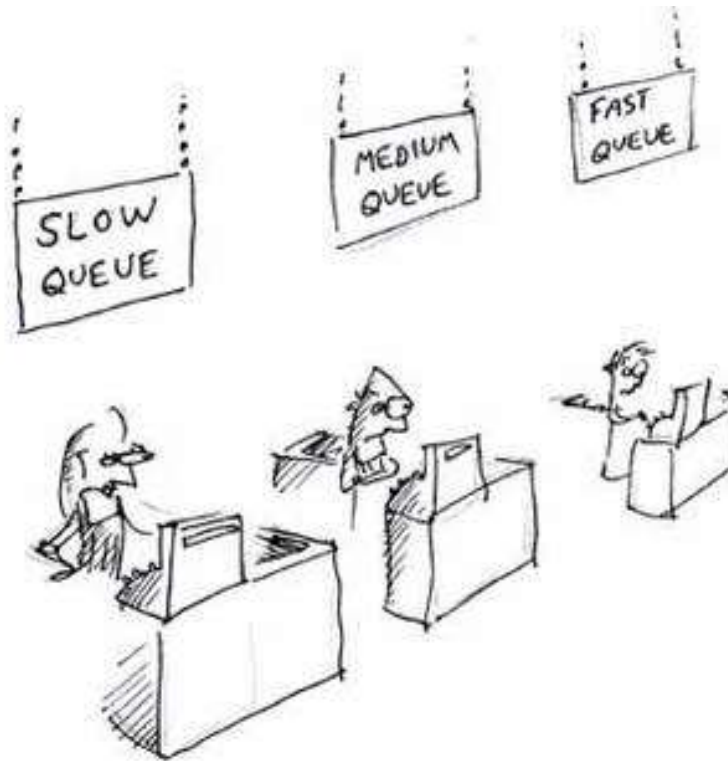
Motivation

Example 1: Steel Rolling: Integration of Data and



Motivation

Example 2: IG Production: Smart Cockpit



Drew Hudson

Motivation

Example 2: IG Production: Smart Cockpit



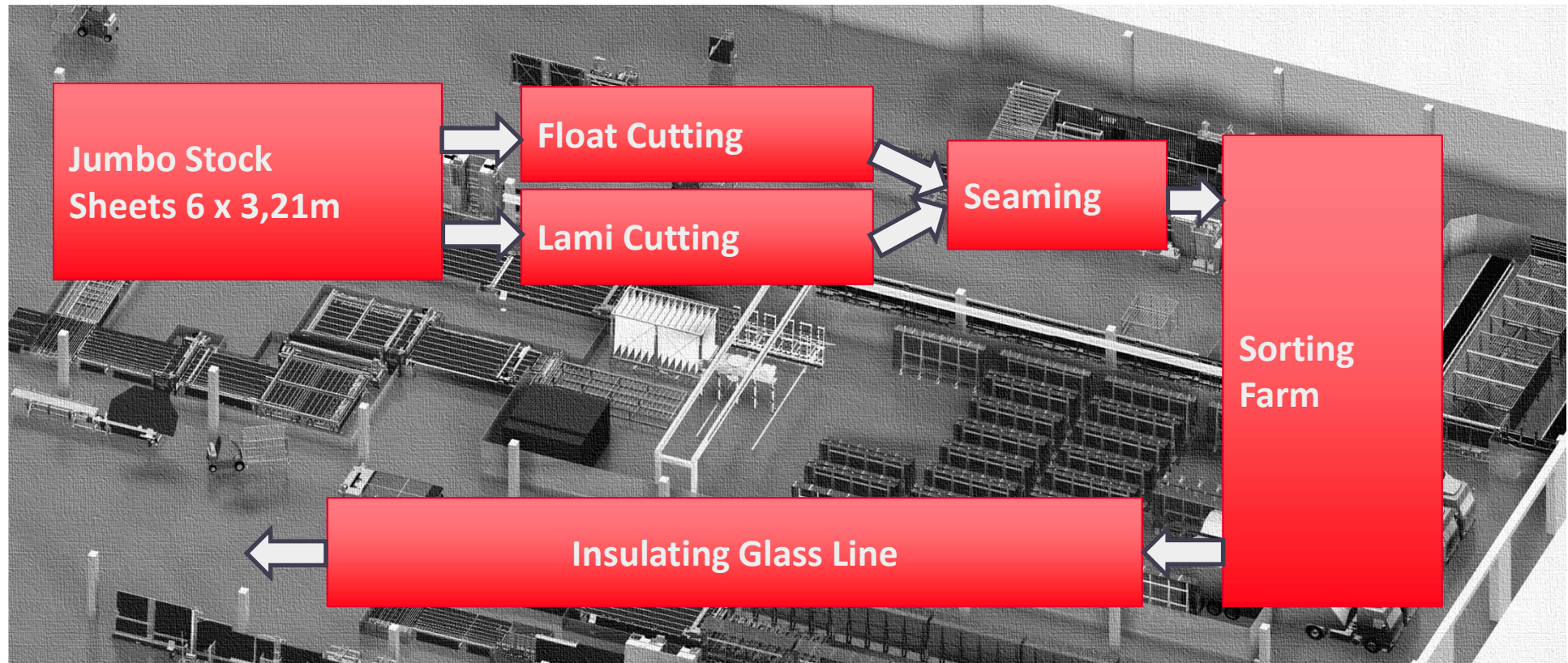
MES Data Collection

- **Philosophy:**
 - Sum up small effects
 - Uncover the invisible
- **Optimization**
 - Production process
 - Supply process (Shopfloor logistics)
- **based on solid ground**
 - Coordination issues
 - Production “bottle necks”
 - ...



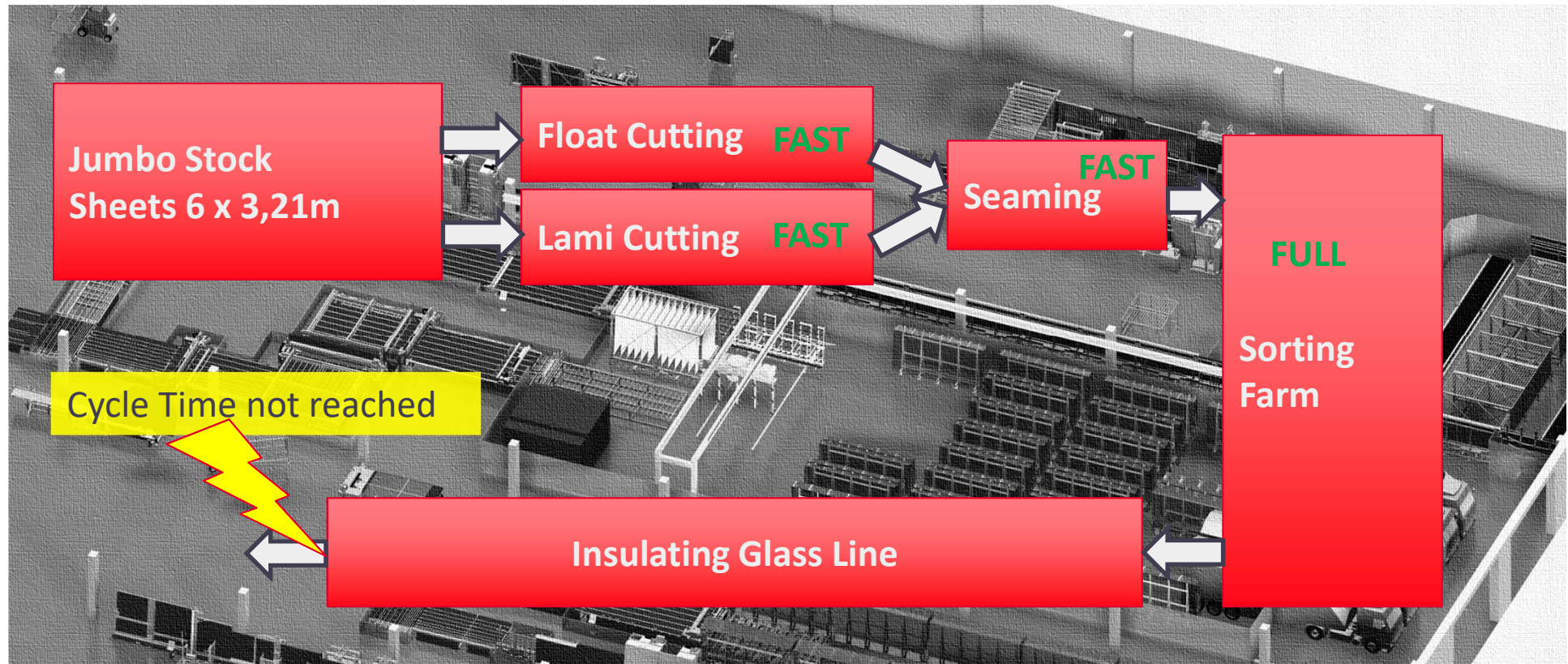
Motivation

Example 2: IG Production: Flow



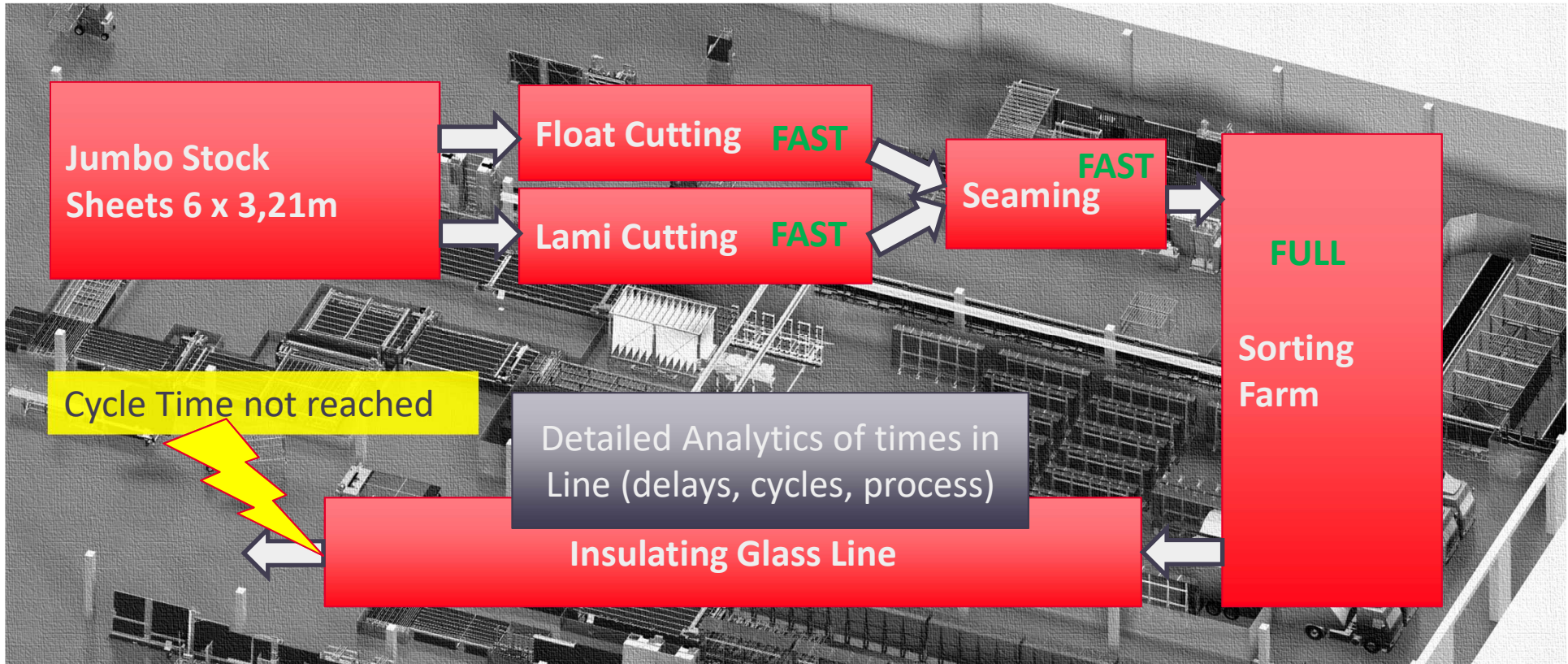
Motivation

Example 2: IG Production: Issue



Motivation

Example 2: IG Production: Analytics



Motivation

Example 2: IG Production: Solution



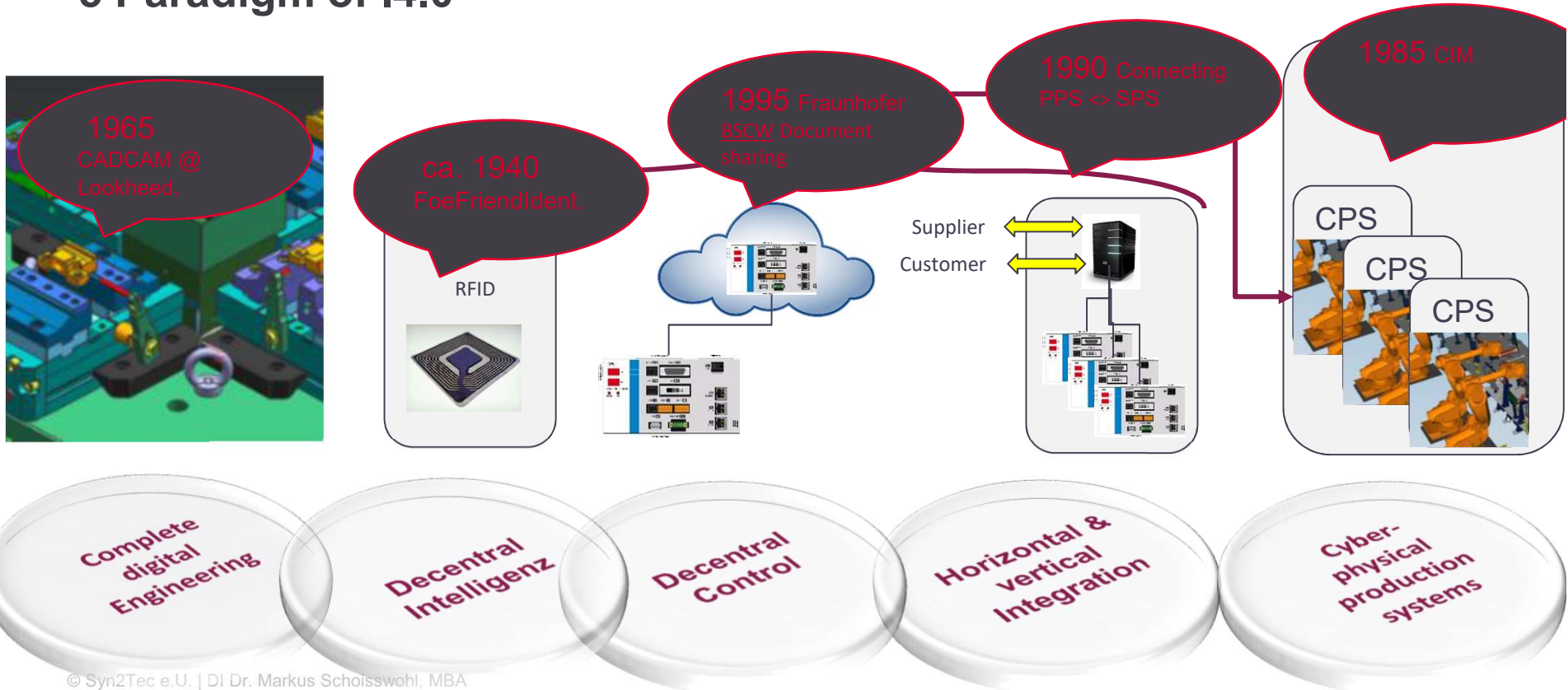
Vertical Integration

1. How we are
2. Motivation
3. **Industrie 4.0 & Asset Administration**
4. And what we can do more
5. Summary



Industrie 4.0 nach Dr Roth

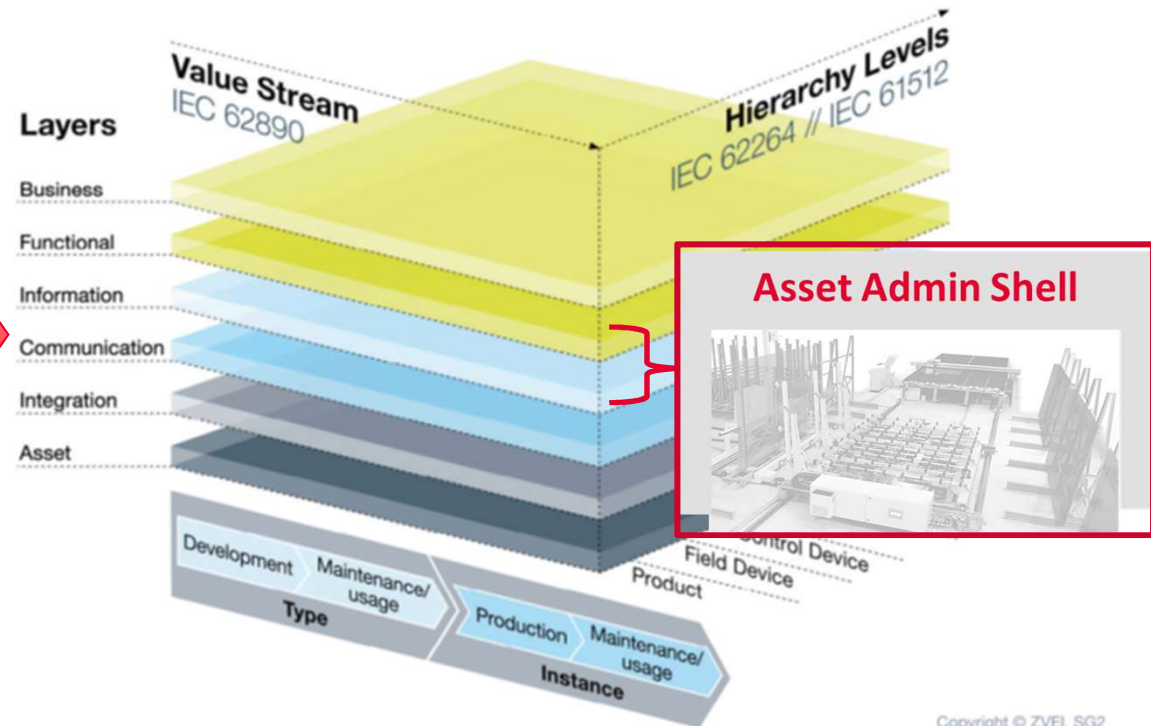
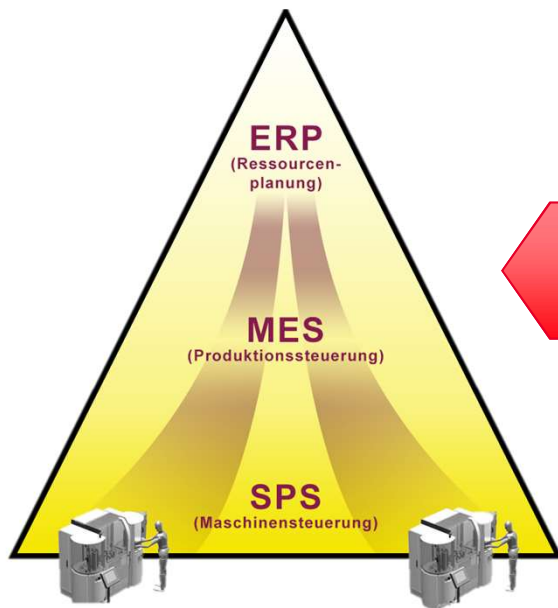
5 Paradigm of I4.0



Industrie 4.0

Rami Modell in general

Automation hierarchy versus Rami Model:



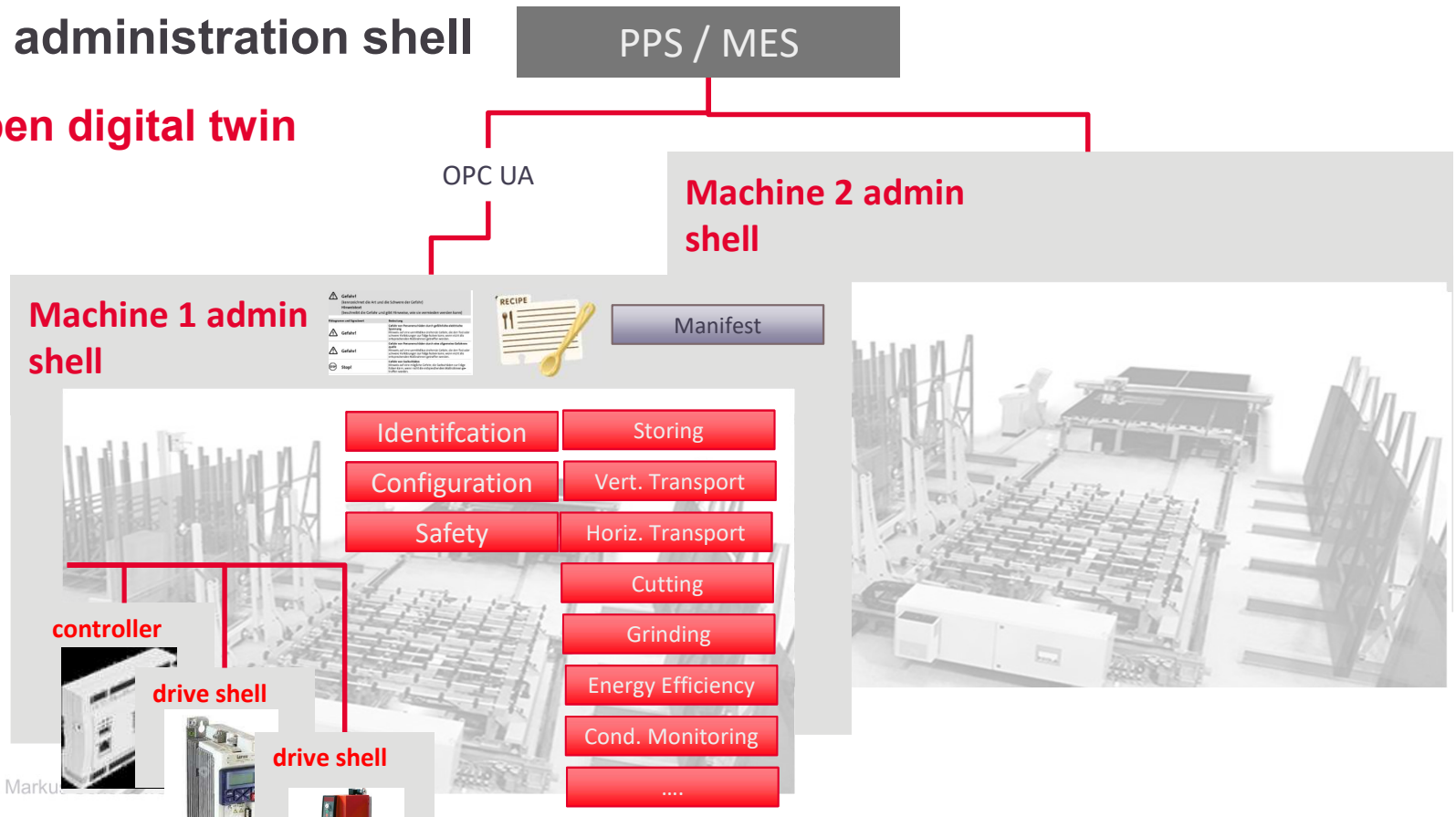
The asset administration shell

- **Essential but why?**
 - Standardized models including
 - Production parameters
 - Technical documentation
 - spares
 - Health condition
 - for all devices
 - ...integrating them to machines



Machine administration shell

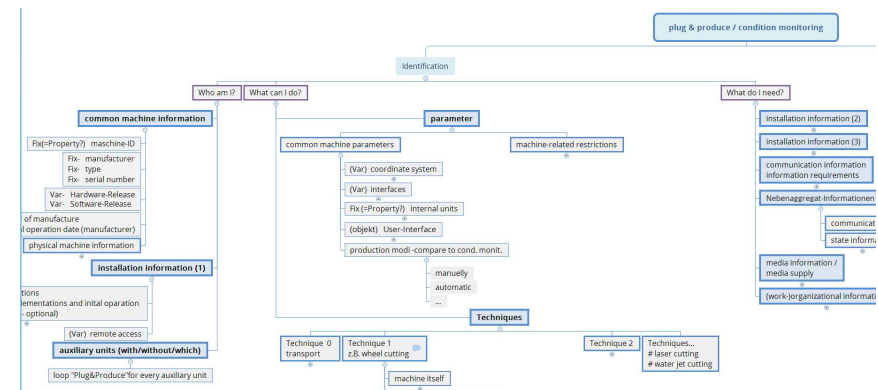
➤ The open digital twin



The communication of the assets:

➤ Typical I4.0 communication: OPC-UA

- Has a broad basis
- But requires further detailing



=> Initiative for Companion Specification for the Glass Industry started 2018 aiming release candidate in 2020

Vertical Integration

1. How we are
2. Motivation
3. Industrie 4.0 & Asset Administration
4. And what we can do more
5. Summary



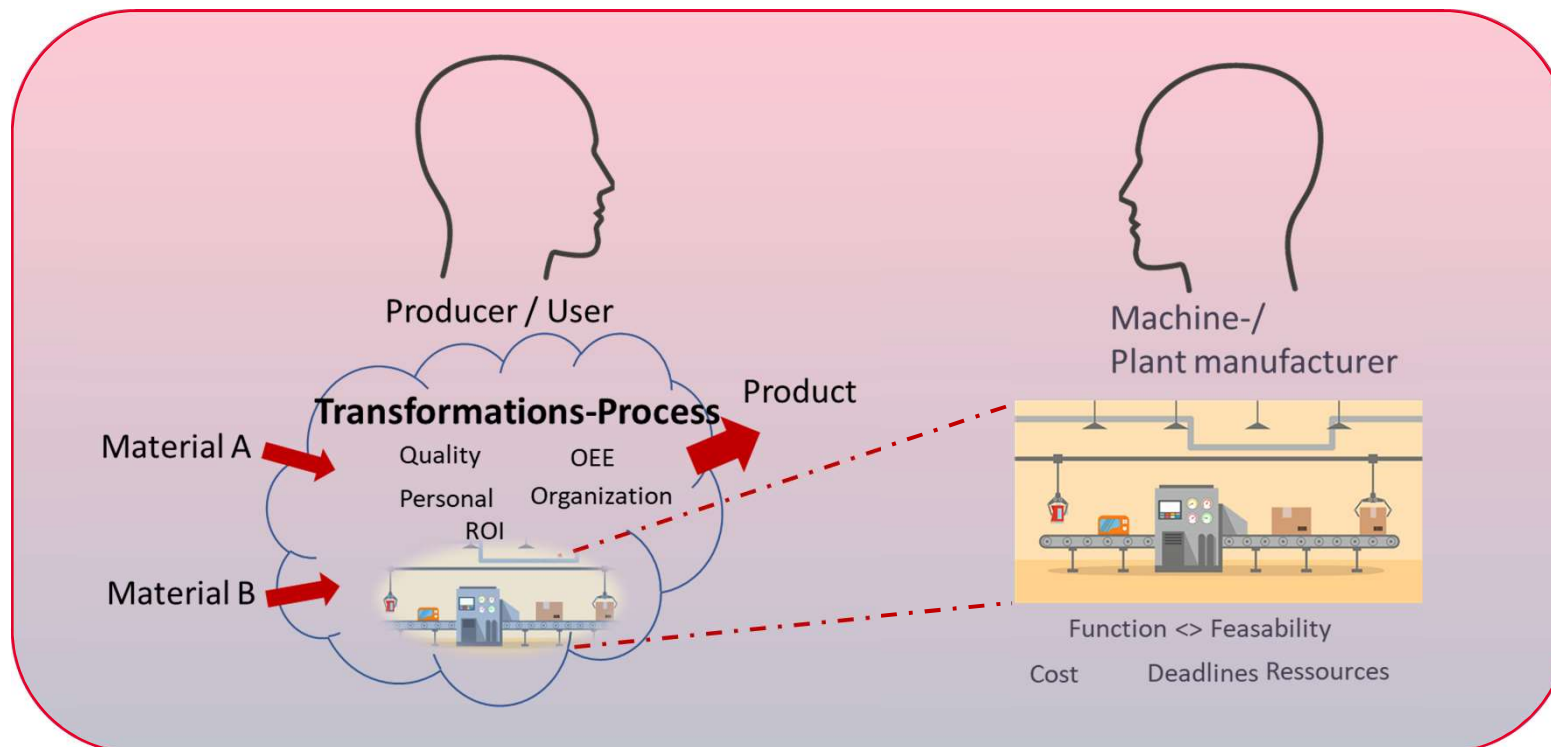
Industrie 4.0

Changing the perspective

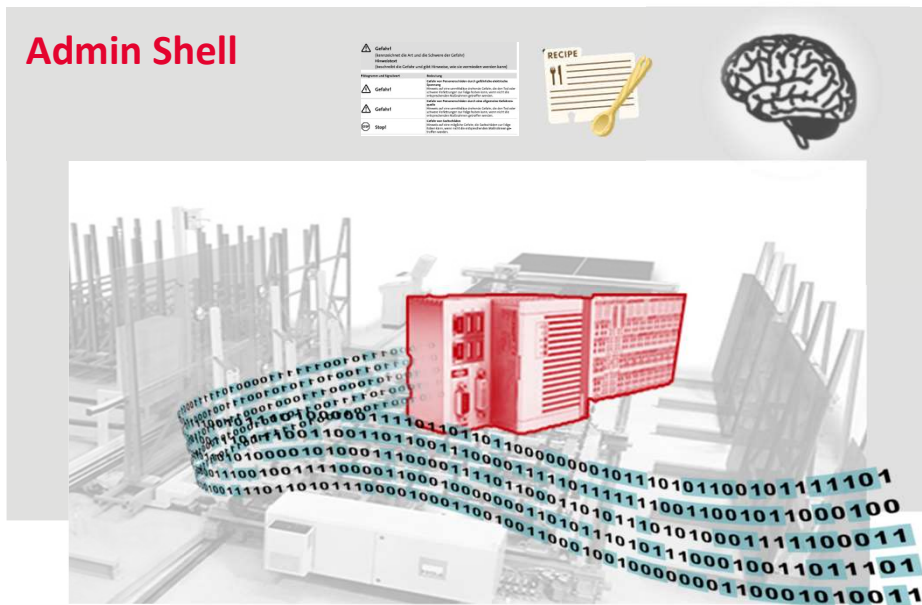


What makes the difference





... is skin flip



Syn2tec & die bewusste Maschine



Referenzarchitekturmodell Industrie 4.0 (RAMI4.0)

- i**  **Product**
 → predictive Quality Control
- i**  **Production**
 → Bottleneck-Ident. & Optimization
- i**  **Machine & Tools**
 → Health condition
- i**  **Operator**
 → Personal assistant



The merit of vertical integration

a: the cockpit



The glass cockpit

➤ **Assets in focus Wherever you are**



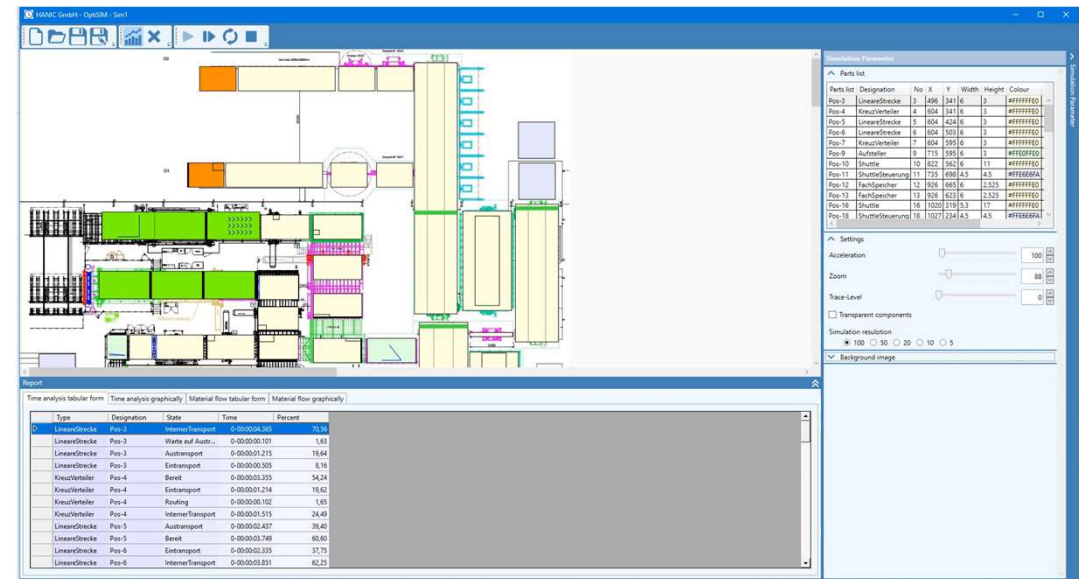
The merit of vertical integration

b: accurate simulations



Tuning what will happen:

- **Based on production data**
 - Real cycle times
 - Respecting real OEE
- **Enabling comprehensive simulation pushing**
 - production strategies
 - proper scheduling
 - ressource optimization

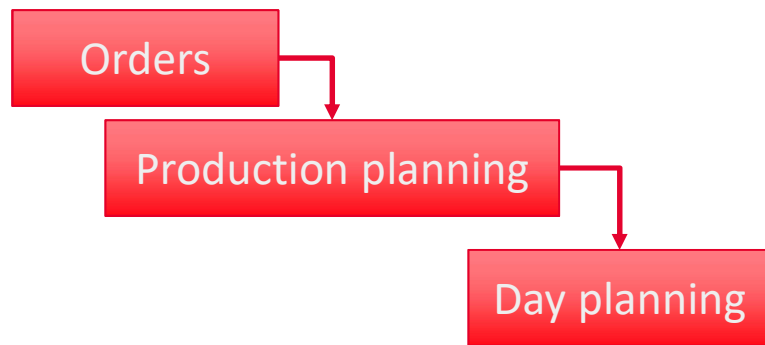


The merit of vertical integration

c: closed loop production control



Production Control .. the ordonance way

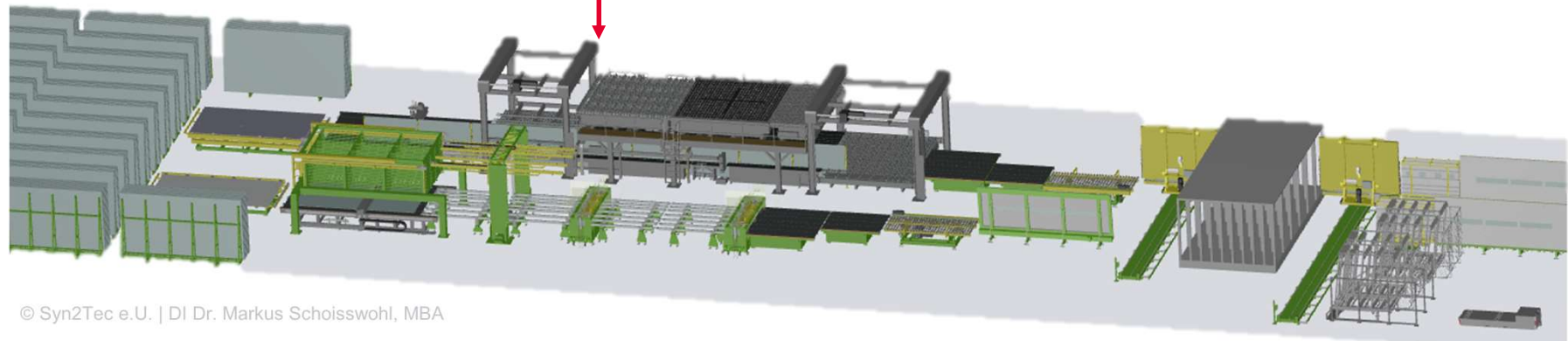


Planning based on fixed parameters

- Available time
- Processing times
- Cycle times

limits itself

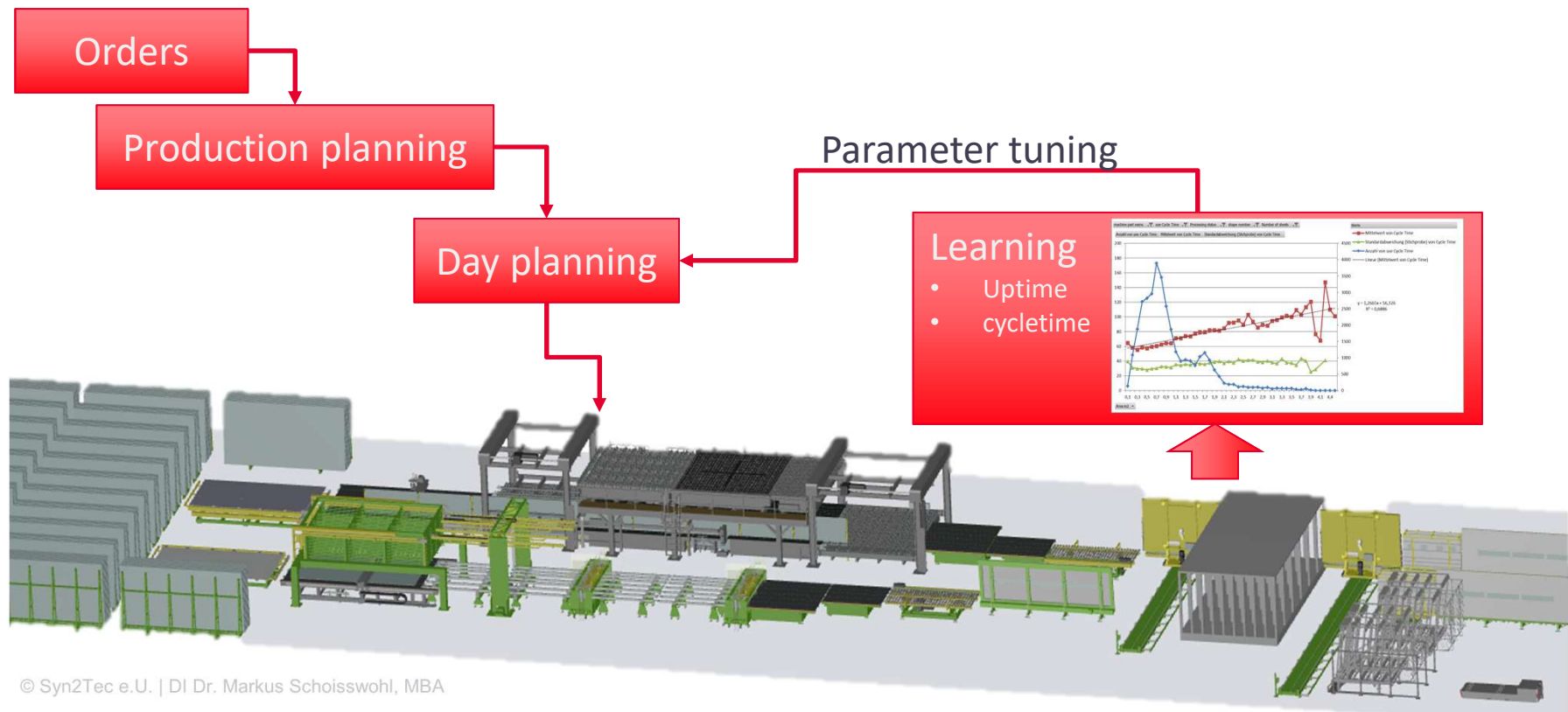
- to avoid overexploitation



The merit of vertical integration c: closed loop production control



Production Control .. the agile way



Vertical Integration

1. How we are
2. Motivation
3. Industrie 4.0 & Asset Administration
4. And what we can do more
5. Summary



Summary



Vertical Integration

➤ **is bases**

- to provide solid decision base
- allowing you to improve productivity
- for providing assistance
- will change the functioning of production control

...and standardization (I4.0) will boost the development!



SYN2TEC

bright heads for smart solutions

**Applied
identfiying
to create**

**synthesis &
synergies
technologies**

Dr. Markus Schoisswohl, MBA

markus.schoisswohl@syn2tec.com

+43 676 612 1966

www.syn2tec.com

follow me 