

# KOMPA



***UNIKO LITE***

## UNIKO LITE CONSTRUCTION

Thermally stable steel structure

Tempered steel, high precision sleeve with reference notch

Dimensions= 44: 1,080mm L x 626mm D x 950mm H

Weight= 44: 136Kg (299 lbs.)

## AXIS MOVEMENT

X Axis (Diameter) = 400mm / 15.75in

Z Axis = 44: 400mm (15.7 in.)

Resolution X & Z Axis - 1 µm

Mechanical axis lock

ISO 30/40/50 with additional spindles available

## SPINDLE

Interchangeable tool sleeve

Manual tool sleeve rotation brake

Fine micrometric adjustments

Glass optical scales, SP class precision linear guides

Concentricity - 2 µm

Maximum tool weight 40kg / 88 lbs.

## OPERATING SYSTEM

Vertical 19" Monitor

CVS Smart, user friendly software (optional)

Windows Operating System with data back-up system

Storage of up to 200 machine origins and 40,000 tools

4 port USB hub

1 Network LAN port

## CAPABILITIES

ID Image for each machine origin

Fixed/Mobile Axis

Automatic Radius & Angle Computing Cycle

X&Z Axis Focusing Control Bar

Full Screen Auto Targeting

Real-view tool inspection

Measure radial and axial run-out

## VISION SYSTEM

HD Camera

40x Magnification

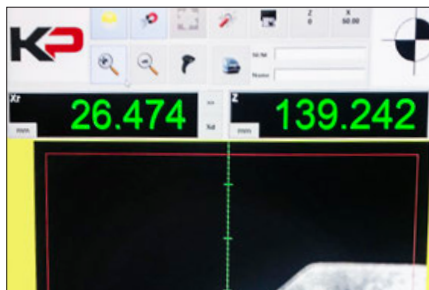
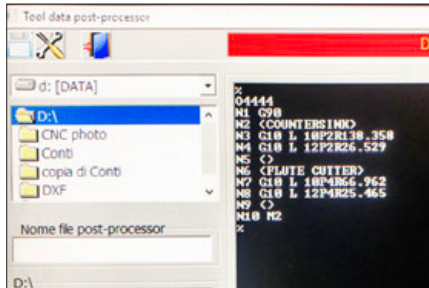
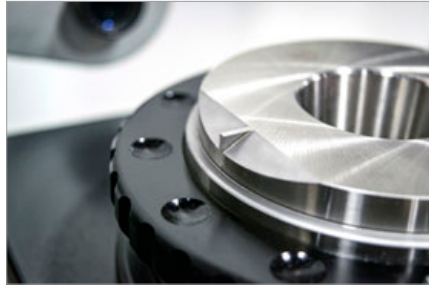
5 x 5 field of view

## OPTIONS

Label printer

CVS Smart post processing software

## FEATURES



## USER-FRIENDLY INTERFACE

Entering the world of tool presetting is made easy with the Uniko Lite. Fully equipped and easy to use, the Uniko Lite offers a user-friendly intuitive interface, allowing for easy setting of tools and inspection. Easily check tool geometry using one of the auto-measuring functions.

## POWERFUL COMPUTING SYSTEM TOOL DATA MANAGEMENT

This powerful new operating system utilizing Windows, features state-of-the-art tool measuring, inspection and data management solutions. Koma presetters increase efficiency, reduce down time and are supported by extensive applications, technical support, and a global service network.

## ERGONOMICALLY DESIGNED CONTROLS

With the operator in mind, the Uniko Lite presetter was designed with an ergonomic micrometric hand wheel allowing for easy fine adjustment of the presetter's optics. A "zero gravity" support column allows smooth, effortless movement of the camera optics in both X and Z. Easy to use interchangeable tool pots allows the presetter to be quickly switched to accommodate any type of tooling.

## SOFTWARE

Simple and intuitive, the CVS Smart software is easy to use. All functions are easy to find and shown using simple, graphical icons. It has never been easier or faster to set your tooling. Create tool lists and generate tool offsets in minutes with the CVS Smart software. (optional)

## VIEWING SYSTEM

Easy to use software combined with a full 19" HD monitor provides the operator with full control. Easily select any of the presetters measuring options with one click, while still viewing the edge of the cutting tool. The telecentric lenses on the HD cameras provide a full field of vision.

## SLIDEWAYS / OPTICAL SCALES

The Uniko Lite is built with dual SP Precision guides and preloaded recirculating bearings mounted to a stabilized steel base ground to 2 microns of planarity. 1-micron glass optical scales are used to ensure the highest accuracy of tool measurements.

# ***UNIKO LITE***





Tel: 1.800.249.5662  
Fax: 860.623.4132

info@komaprecision.com  
www.komaprecision.com

20 Thompson Road  
East Windsor, CT 06088

